

**WE
GROWN
NOW**





CHICAGO CABRINI GREEN homes were originally built to provide public housing for workers after WWII. By the early 1960s most of its residents were Black Americans.

Once a model of public housing, but it became a symbol of urban blight and failed housing policy due to poor planning, gang violence, drugs, and chronic unemployment.



In 1992, the murder of 7 year old Dantrell Davis
in Chicago's Cabrini-Green housing projects
led to a truce between local gangs
and national attention to violence in inner-city projects.

THE MOVIE

In 1992, best friends Malik and Eric traverse the city of Chicago, looking to escape the mundaneness of school and the hardships of growing up in public housing. They soon find their unbreakable bond challenged when a tragedy shakes their community.



The partial apartment building with 3 apartments and breezeway was built entirely on stage.

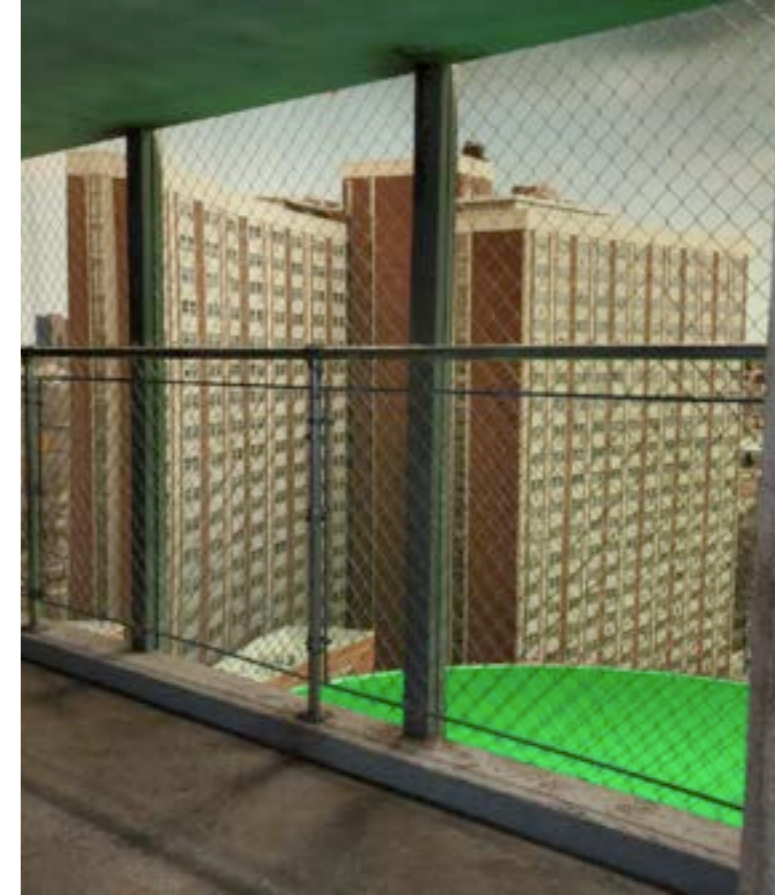
**IMAGES FROM
CABRINI-GREEN
BREEZEWAY**



**STILLS FROM MOVIE
BREEZEWAY**



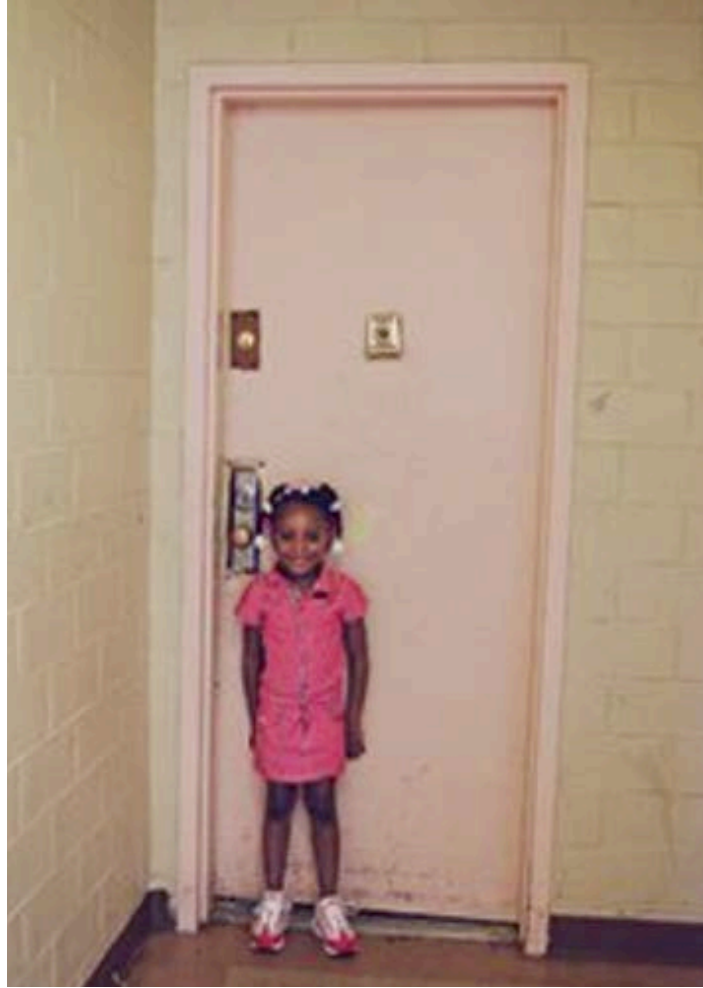
SET PICTURES
BREEZEWAY



ORIGINAL IMAGES INSIDE THE APARTMENTS



ORIGINAL IMAGES
APARTMENTS



STILLS FROM MOVIE
MALIK'S APARTMENT



STILLS FROM MOVIE
MALIK'S APARTMENT



SET PICTURES
MALIK'S APARTMENT



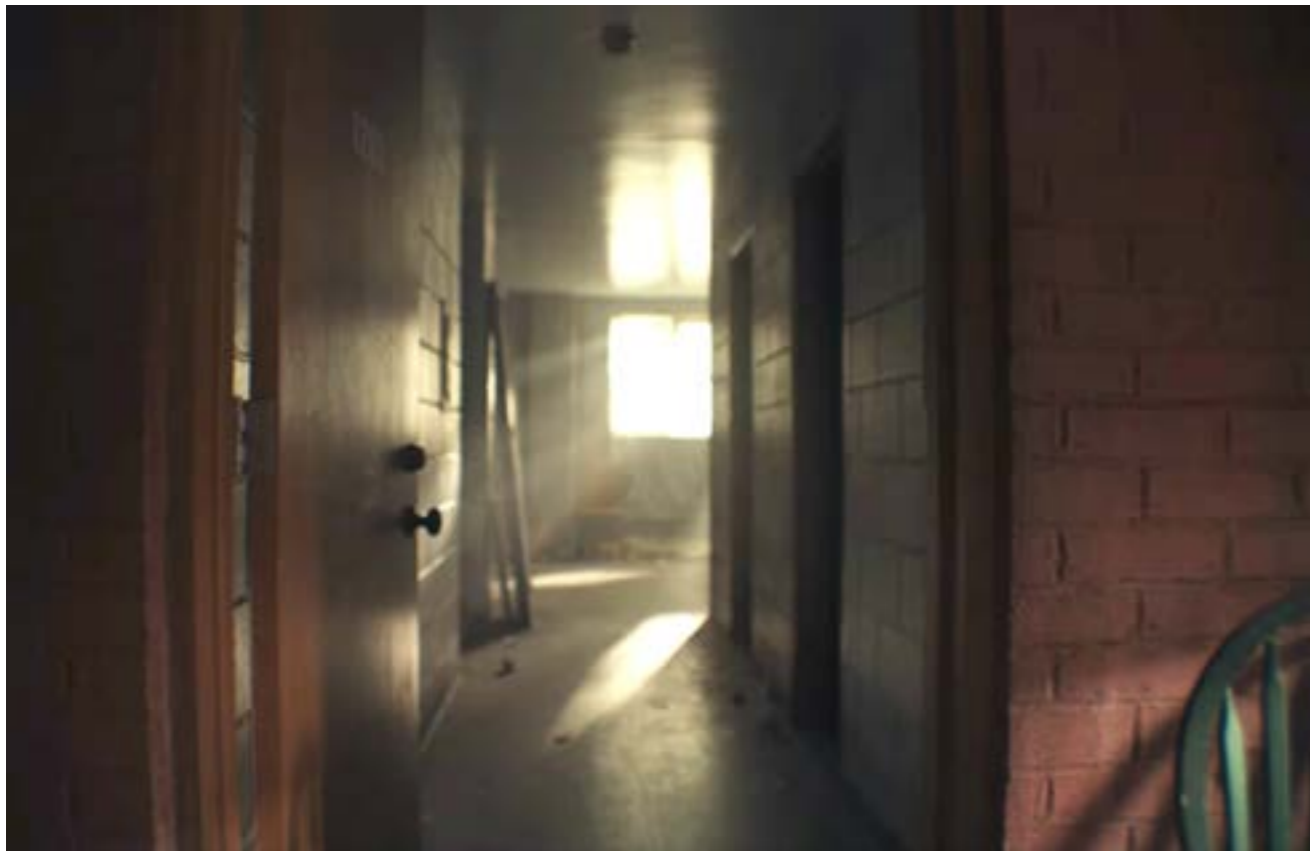
STILLS FROM MOVIE
ERIC'S APARTMENT



SET PICTURES
ERIC'S APARTMENT



STILLS FROM MOVIE
EMPTY APARTMENT

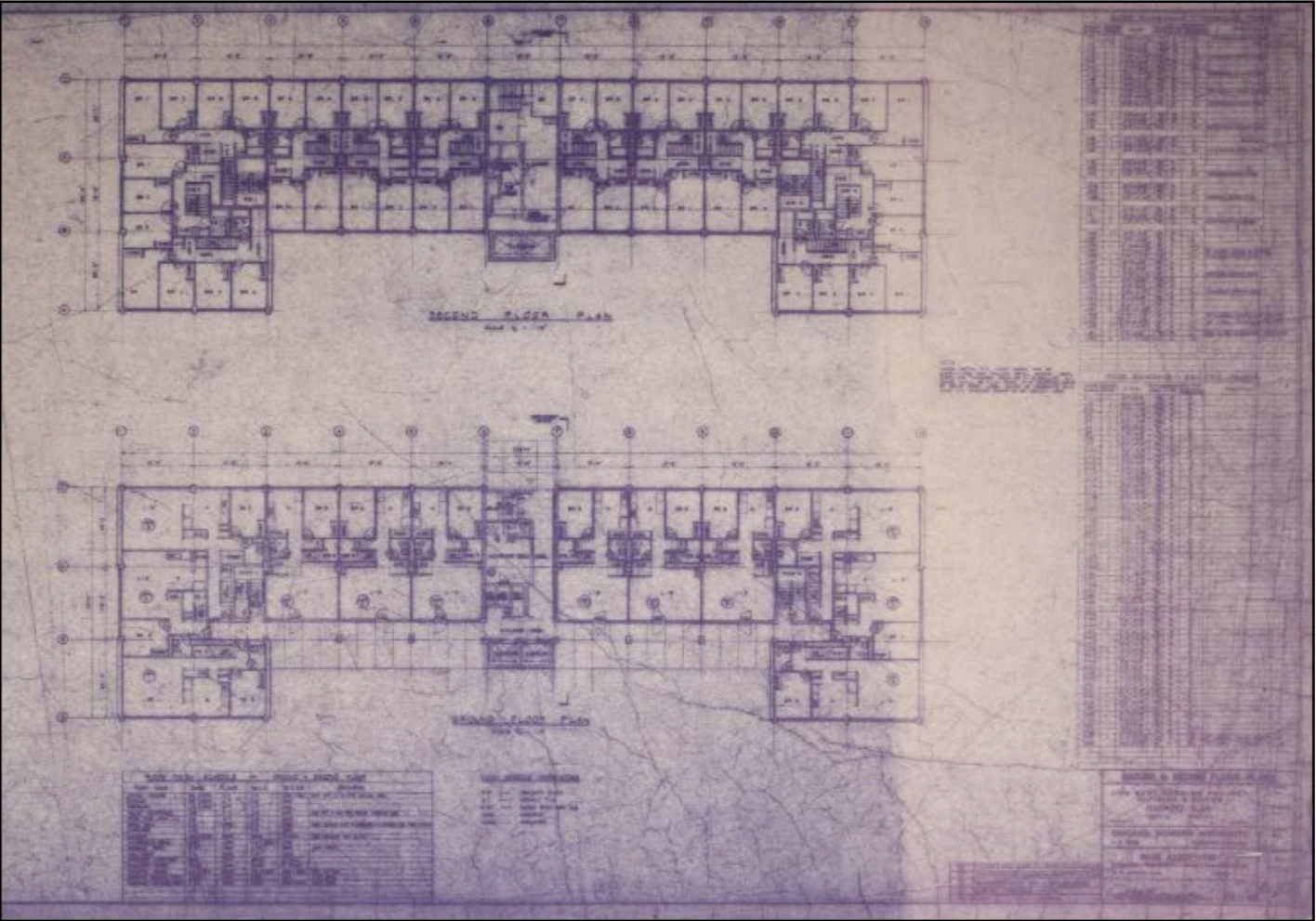
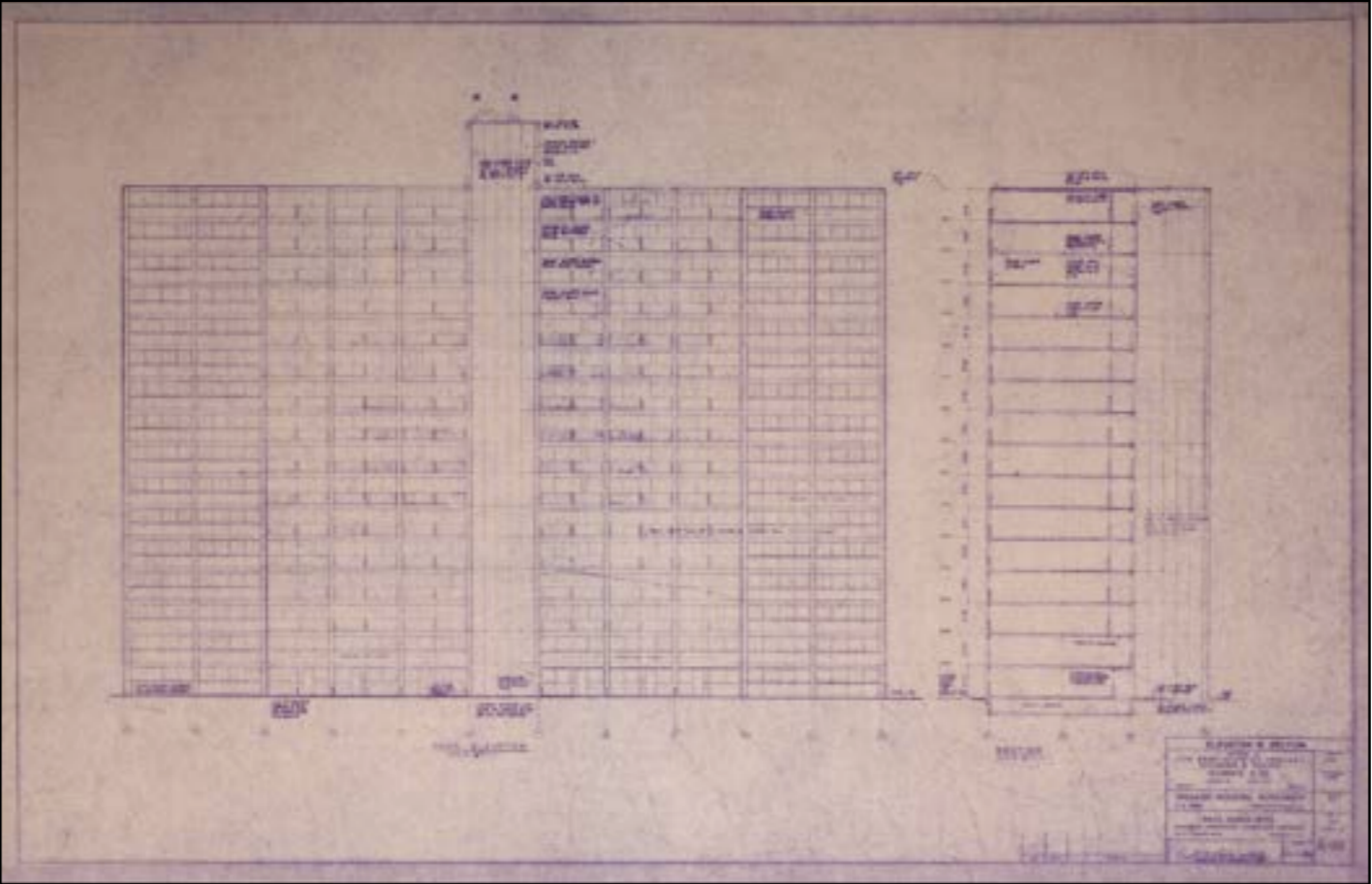


SET PICTURES
EMPTY APARTMENT AND MALIK'S AFTER THE POLICE RAID



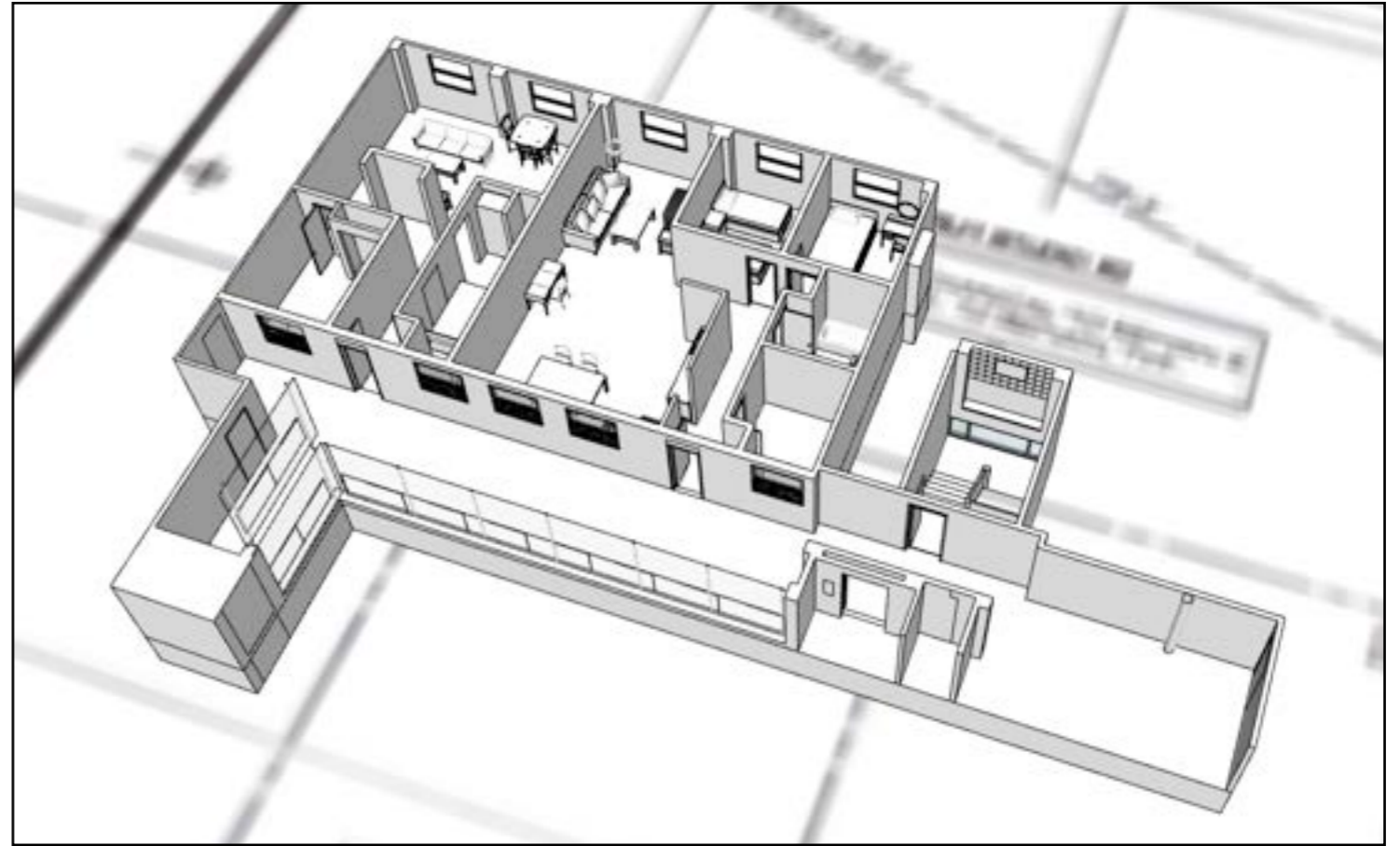
ORIGINAL BLUEPRINTS

Only blue prints for Cabrini-Green buildings were in the archives of Art Institute of Chicago.

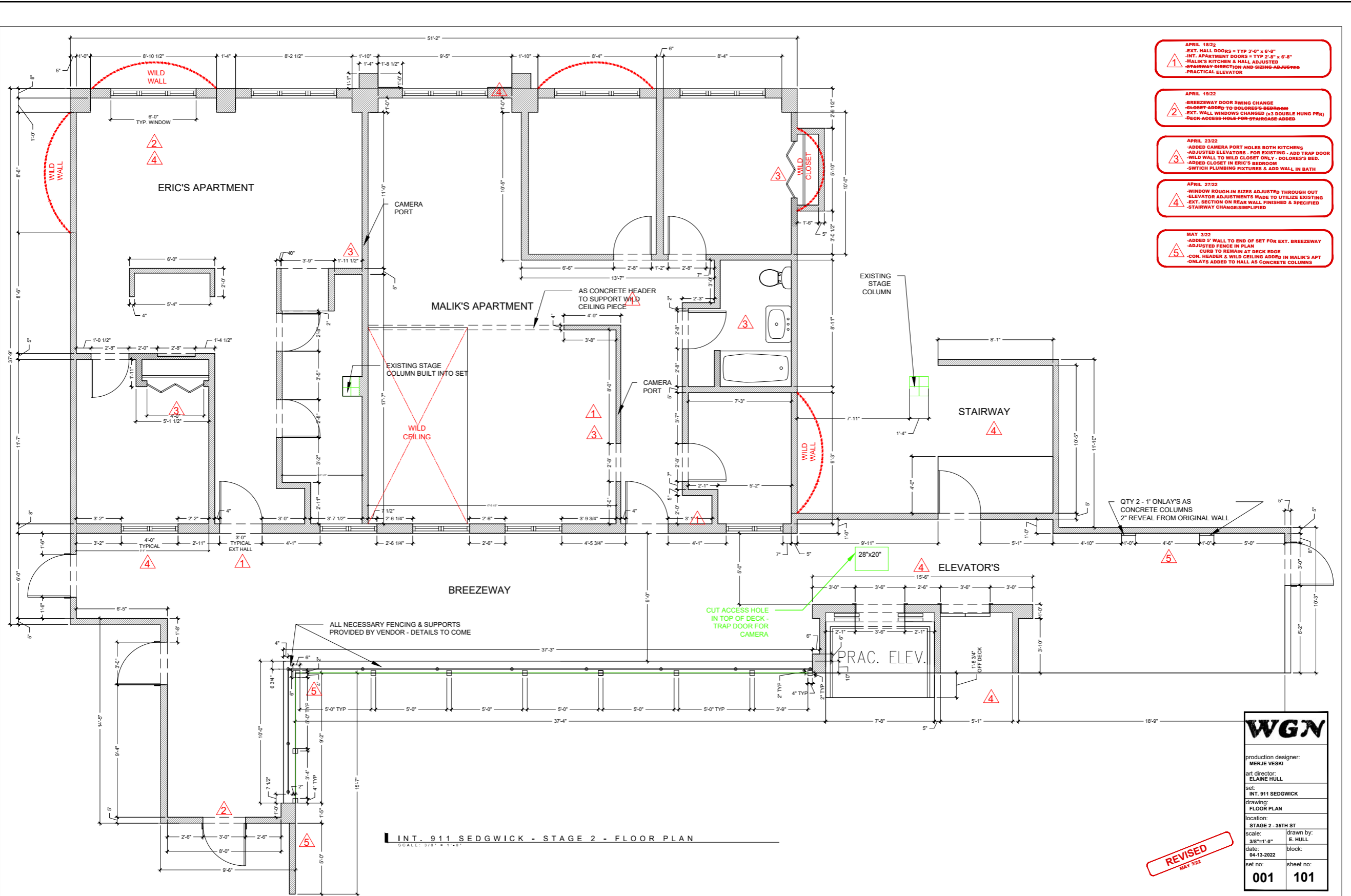


3D RENDERINGS OF THE SET

1/2 FLOOR OF THE APARTMENT COMPLEX



PLAN



APRIL 18/22
 1 - EXT. HALL DOORS = TYP 3'-0" x 6'-8"
 -INT. APARTMENT DOORS = TYP 2'-3" x 6'-8"
 -MALIK'S KITCHEN & HALL ADJUSTED
 -STAIRWAY-DIRECTION AND SIZING ADJUSTED
 -PRACTICAL ELEVATOR

APRIL 19/22
 2 - BREEZEWAY DOOR SWING CHANGE
 -CLOSET ADDED TO DOLORES'S BEDROOM
 -EXT. WALL WINDOWS CHANGED (x3 DOUBLE HUNG PER)
 -DECK ACCESS HOLE FOR STAIRCASE ADDED

APRIL 23/22
 3 - ADDED CAMERA PORT HOLES BOTH KITCHENS
 -ADJUSTED ELEVATORS - FOR EXISTING - ADD TRAP DOOR
 -WILD WALL TO WILD CLOSET ONLY - DOLORES'S BED.
 -ADDED CLOSET IN ERIC'S BEDROOM
 -SWITCH PLUMBING FIXTURES & ADD WALL IN BATH

APRIL 27/22
 4 - WINDOW ROUGH-IN SIZES ADJUSTED THROUGH OUT
 -ELEVATOR ADJUSTMENTS MADE TO UTILIZE EXISTING
 -EXT. SECTION ON REAR WALL FINISHED & SPECIFIED
 -STAIRWAY CHANGE/SIMPLIFIED

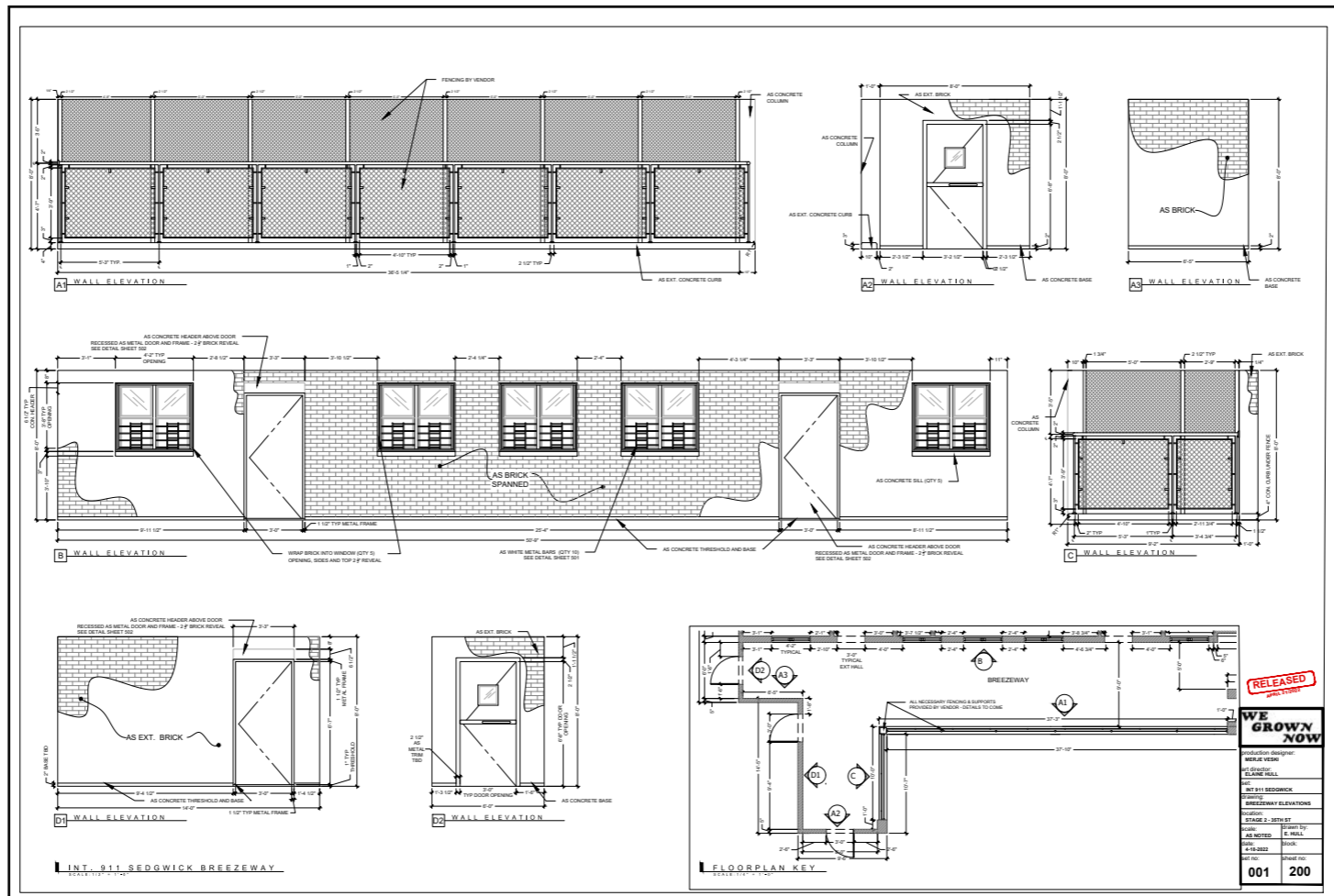
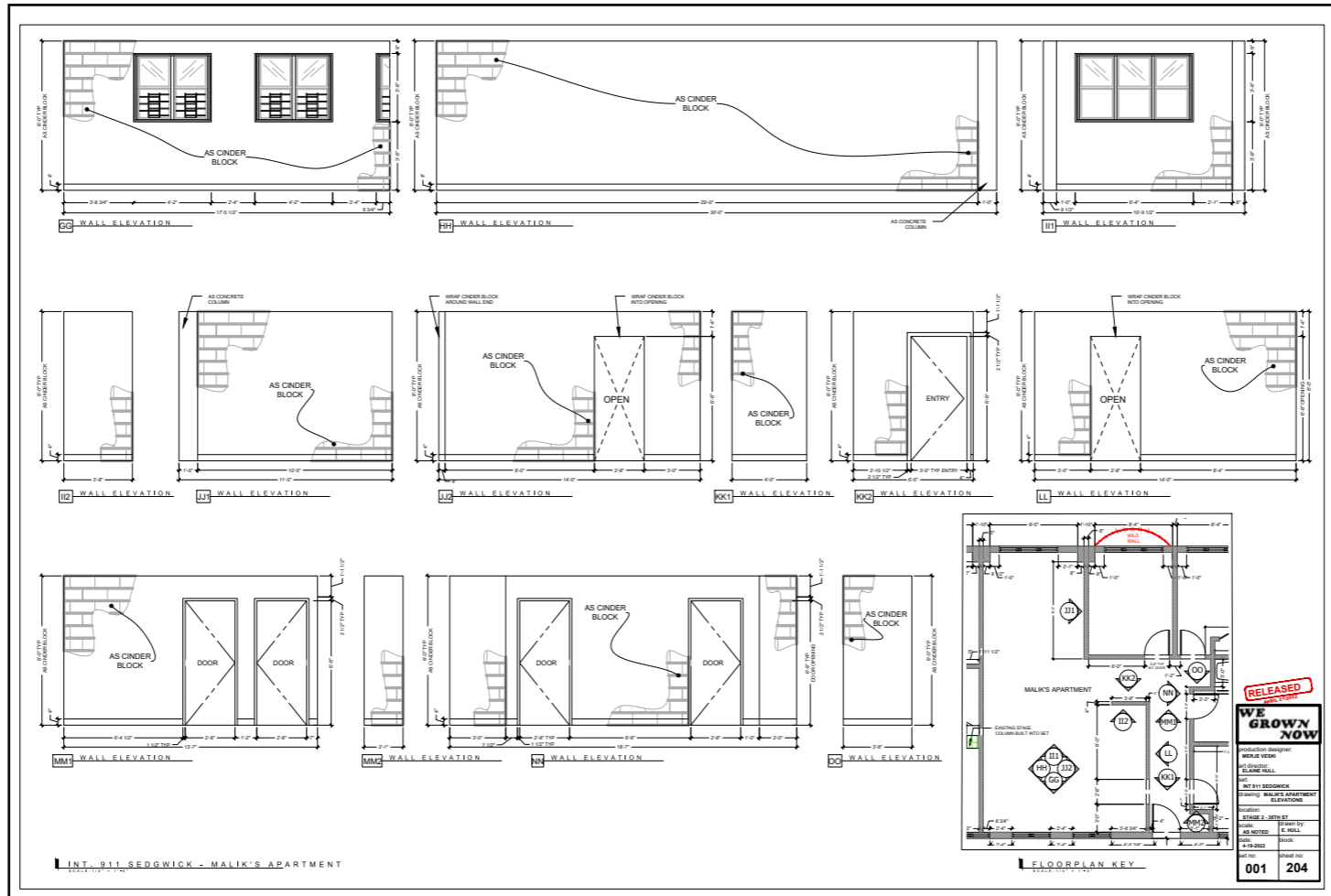
MAY 3/22
 5 - ADDED 5' WALL TO END OF SET FOR EXT. BREEZEWAY
 -ADJUSTED FENCE IN PLAN
 -CURB TO REMAIN AT DECK EDGE
 -CON. HEADER & WILD CEILING ADDED IN MALIK'S APT
 -ONLAYS ADDED TO HALL AS CONCRETE COLUMNS

INT. 911 SEDGWICK - STAGE 2 - FLOOR PLAN
 SCALE: 3/8" = 1'-0"

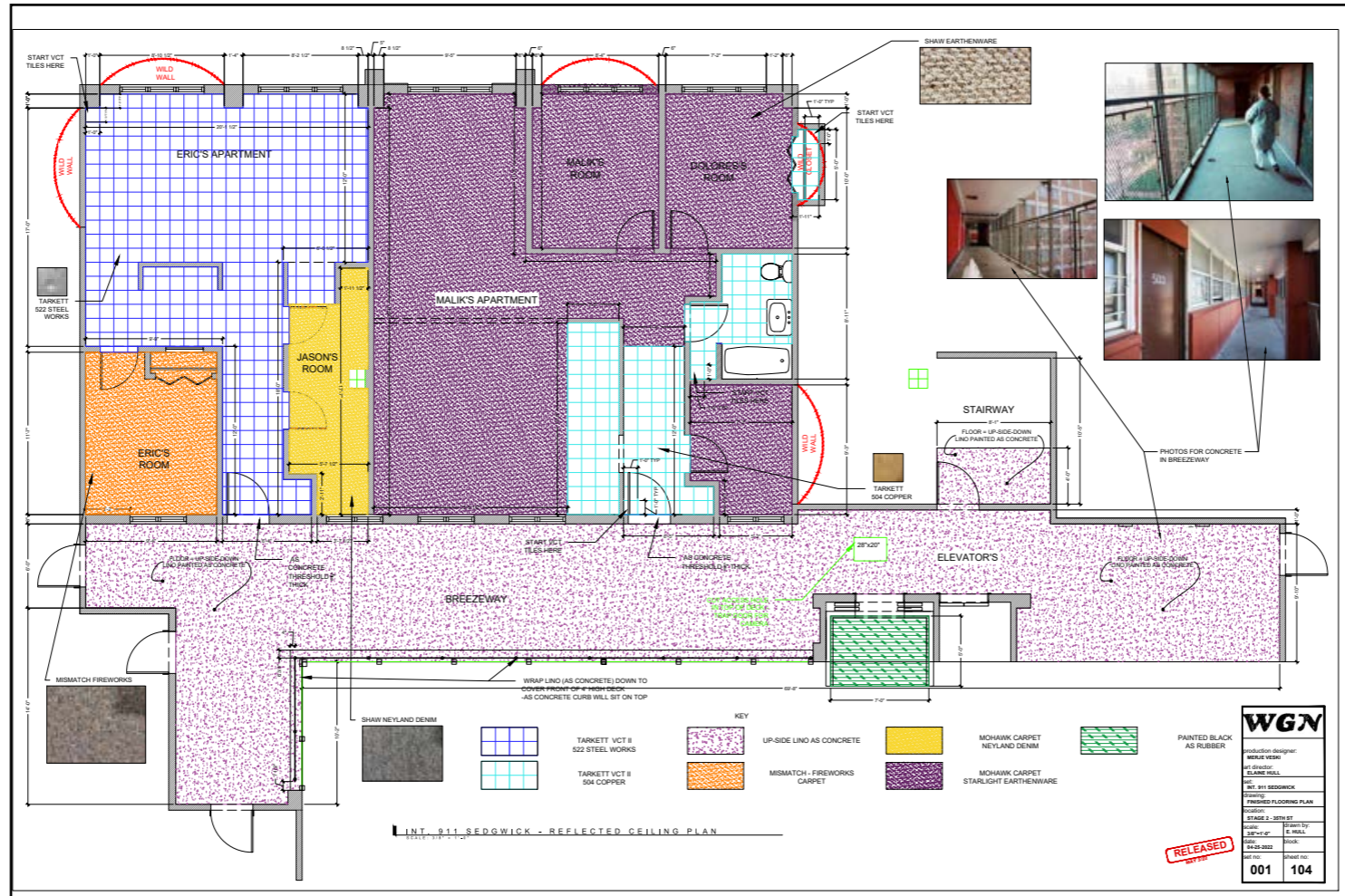
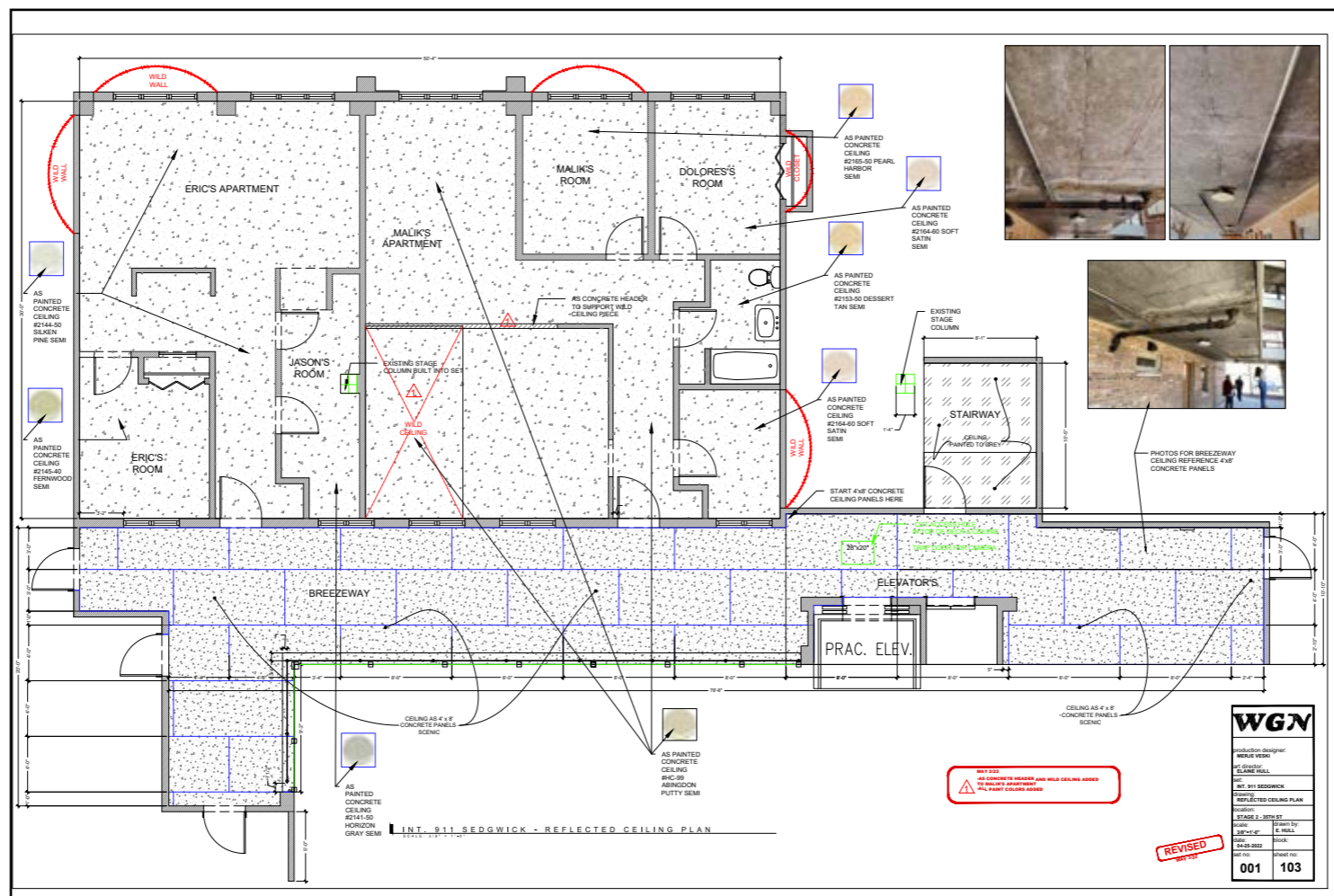
REVISED
 MAY 2022

WGN	
production designer:	MERJE VESKI
art director:	ELAINE HULL
set:	INT. 911 SEDGWICK
drawing:	FLOOR PLAN
location:	STAGE 2 - 35TH ST
scale:	3/8"=1'-0"
date:	04-13-2022
set no:	001
drawn by:	E. HULL
block:	
sheet no:	101

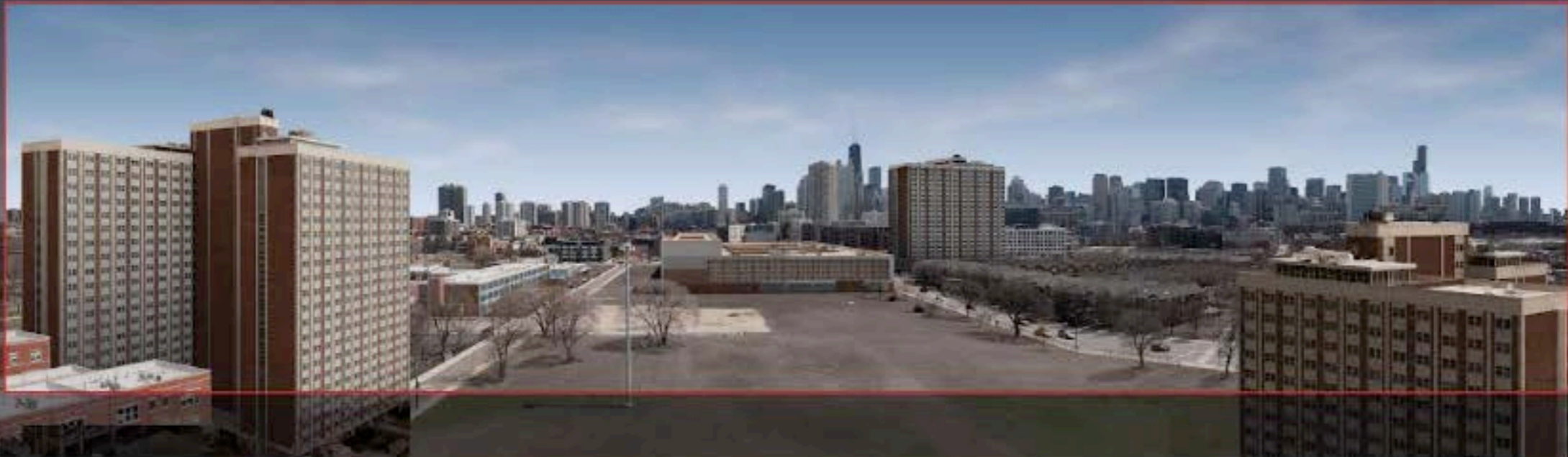
ELEVATIONS



CEILING AND FLOOR FINISHES



DAY/NIGHT BACKING



Custom made backing was photographed with drone camera at original Cabrini-Green location, digitally all the new buildings removed and filled in with now demolished old buildings.

A **SONY PICTURES CLASSICS** RELEASE **STAGE 6 FILMS** PRESENTS IN ASSOCIATION WITH **PARTICIPANT** A **SYMBOLIC EXCHANGE** AND **PARTICIPANT** PRODUCTION
"WE GROWN NOW" **BLAKE CAMERON JAMES GIAN KNIGHT RAMIREZ S. EPATHA MERKERSON** WITH **LIL REL HOWERY** AND **JURNEE SMOLLETT**
COSTUME DESIGNER **COURTNEY WHEELER** ORIGINAL MUSIC BY **JAY WADLEY** EDITED BY **STEPHANIE FILO, ACE** PRODUCTION DESIGNER **MERJE VESKI** DIRECTOR OF PHOTOGRAPHY **PAT SCOLA**
EXECUTIVE PRODUCERS **JEFF SKOLL ANIKAH McLAREN JAMES SCHAMUS CARRIE HOLT DE LAMA JURNEE SMOLLETT**
PRODUCED BY **JOE PIRRO MINHAL BAIG** WRITTEN AND DIRECTED BY **MINHAL BAIG**

© 2024 PARTICIPANT FILM, LLC AND SONY PICTURES WORLDWIDE ACQUISITIONS INC. ALL RIGHTS RESERVED.



Symbolic Exchange



SONY PICTURES CLASSICS™
© 2024 SONY PICTURES ENTERTAINMENT INC.