



hulu  
**INTERIOR  
CHINATOWN**  
PRESENTATION

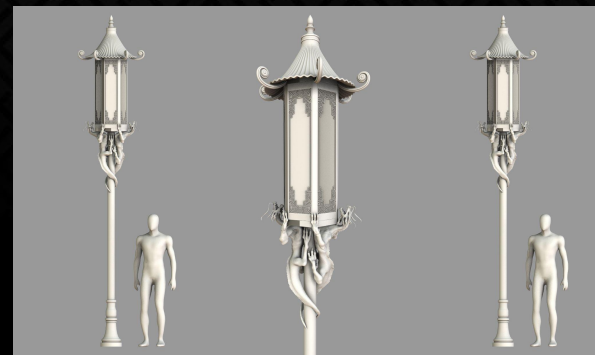
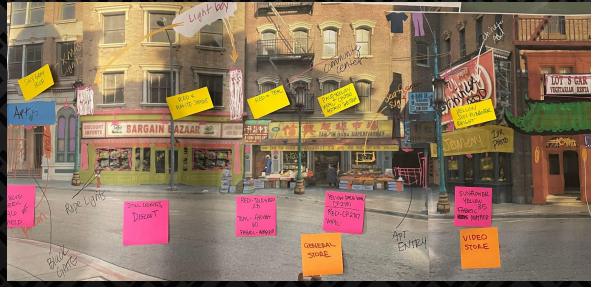


**EXT. GOLDEN PALACE**  
REFERENCES AND PROCESS

EXT. GOLDEN PALACE  
REFERENCES



# EXT. GOLDEN PALACE PROCESS



EXT. GOLDEN PALACE  
CONCEPT DRAWING



EXT. GOLDEN PALACE  
CONCEPT DRAWING





**EXT. GOLDEN PALACE**

BACKLOT

EXT. GOLDEN PALACE  
BACKLOT

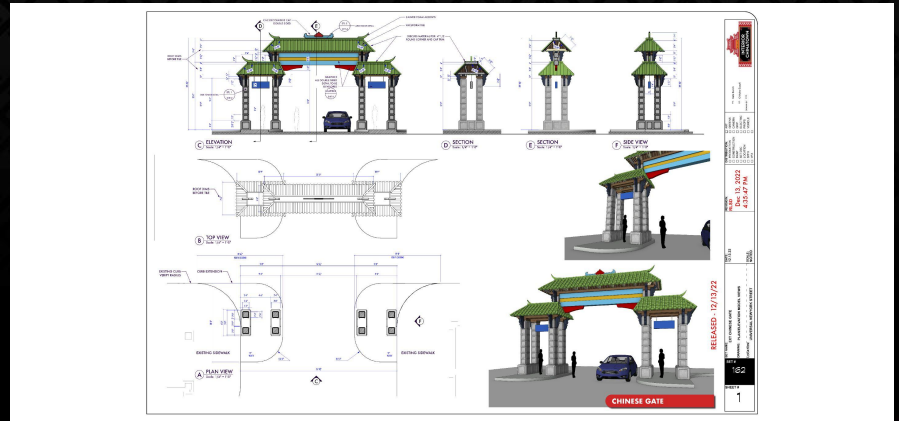




EXT. GOLDEN PALACE  
BACKLOT



EXT. GOLDEN PALACE  
CHINATOWN GATE

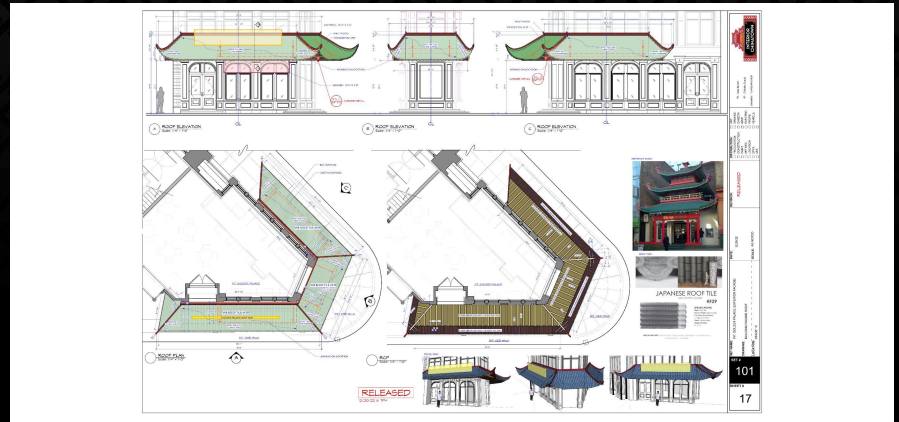
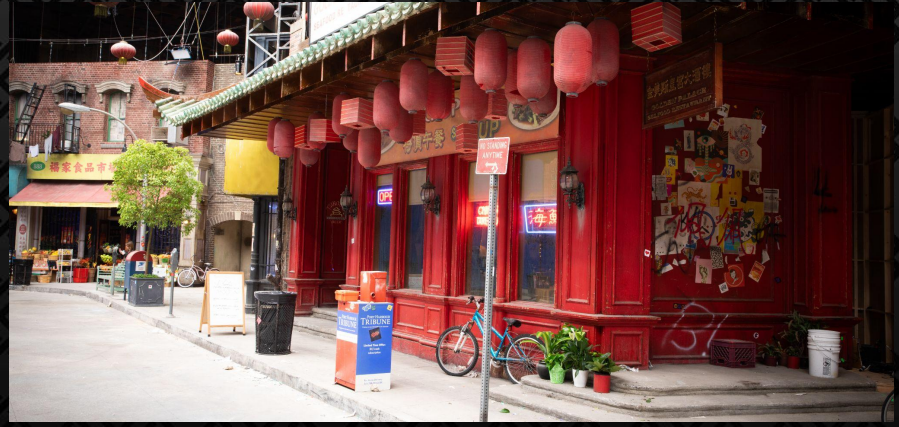




# **EXT. GOLDEN PALACE**

STAGE BUILD

EXT. GOLDEN PALACE  
STAGE BUILD



EXT. GOLDEN PALACE  
STAGE BUILD



EXT. GOLDEN PALACE  
STAGE BUILD



四十年  
英語學院  
A+  
英語  
數補

樓上二樓

花旗洋參  
野生泡參  
正高麗參  
**陳氏參茸行**  
角銀海味  
中國成藥  
中藥配方  
**CHEN & SONS DRY GOODS**

Welcome FOOD STAMPS  
歡迎使用糧食券

名牌錄音機及各種電器零件  
AUDIO · VIDEO · APPLIANCES · SALES · SERVICE · PARTS

電器唱片唱帶總匯  
AUDIO · VIDEO · APPLIANCES  
SALES · SERVICE · PARTS  
DEPENDABLE SINCE 1965

**J.C.N. ELECTRONICS**  
精修各種商用及家庭電器  
AUDIO · VIDEO · APPLIANCES · SALES · SERVICE · PARTS

**J.C.N. ELECTRONICS**  
修理中心 · 電器總匯  
TV-RADIO SERVICE AND REPAIR  
DEPENDABLE SINCE 1965

精修  
電視機  
收音機  
錄影機  
錄影帶  
錄音機  
多士爐  
電風扇  
電熨斗

精修  
電器  
AUDIO  
VIDEO  
ALL  
APPLIANCES  
TV  
RADIO  
REPAIR

精修  
電器  
AUDIO  
VIDEO  
ALL  
APPLIANCES  
TV  
RADIO  
REPAIR

精修  
各種  
電器

精修  
各種  
電器

EXPERT SERVICE  
精修 電器  
AUDIO · VIDEO · APPLIANCES  
DEPENDABLE SINCE 1965

AUDIO 精修各種 VIDEO  
商用及家庭電器  
**Electronics**  
APPLIANCES  
SERVICE AND REPAIR

精修  
電視機 · 收音機  
電風扇 · 咖啡壺  
電氣扇 · 電熨斗  
針灸機 · 美容機 · 各種

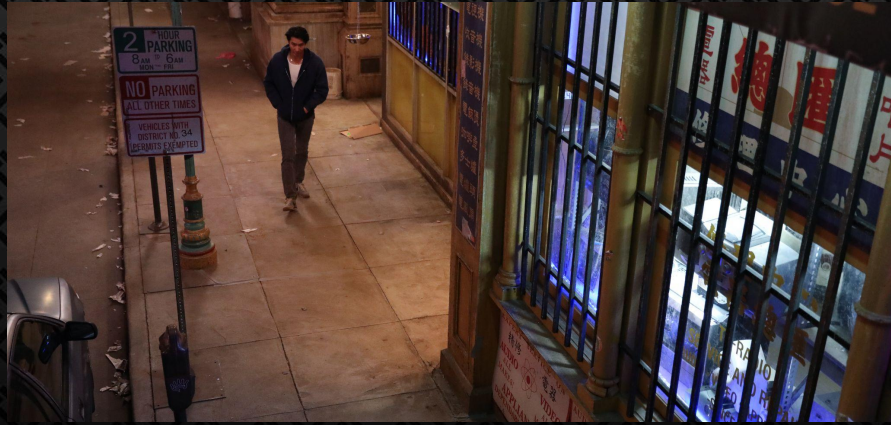
J.C.N. ELECTRONICS  
精修各種商用及家庭電器  
AUDIO · VIDEO · APPLIANCES · SALES · SERVICE · PARTS  
DEPENDABLE SINCE 1965

精修  
各種  
電器

EXT. GOLDEN PALACE  
STAGE BUILD

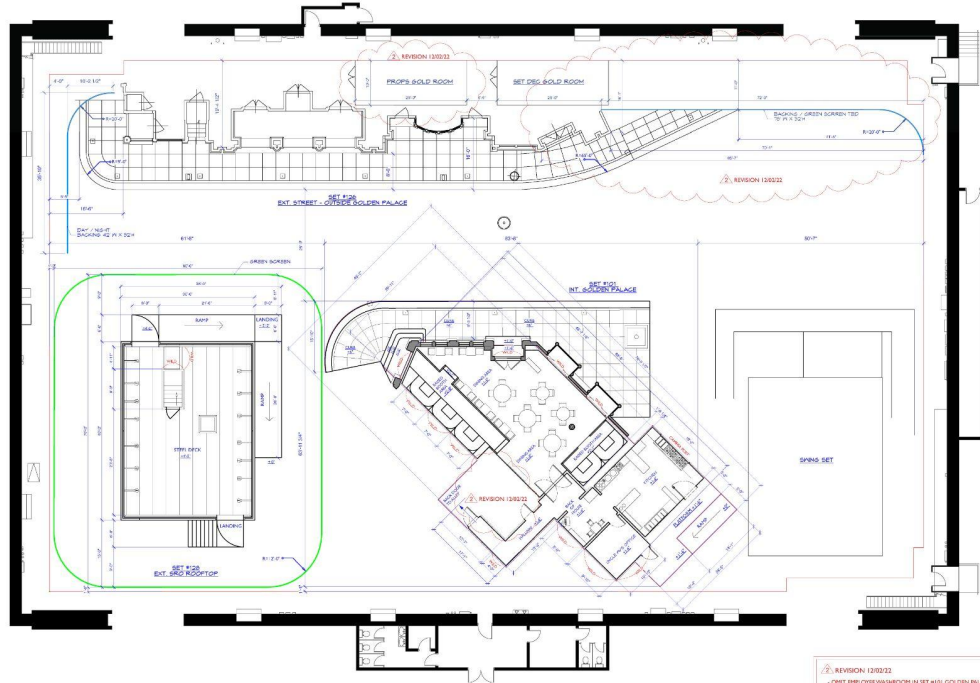


EXT. GOLDEN PALACE  
STAGE BUILD





# EXT. GOLDEN PALACE STAGE BUILD



STAGE 18 SPOTTING PLAN  
DATE: 12-19-18

- REVISION 130203
- OMIT EMPLOYER WASHROOM IN SET #103- GOLDEN PALACE
- OMIT BUILDING 5 (THEATER) IN SET #104 EXT STREET - OUTSIDE GOLDEN PALACE
- BACKING CHANGES FOR #104 EXT STREET
- ADD PROP GOLD ROOM

<b>INTERIOR CHINATOWN</b>	
PREPARED BY: KIM BARKER CHECKED BY: CHANG BARKER APPROVED BY: [Signature]	DATE: 12/22/18 SCALE: 1/4" = 1'-0" SHEET # 101 0.0
SET NAME: EXT. GOLDEN PALACE DRAWING: SPOTTING PLAN LOCATION: STAGE 18	REVISION: REVISED V. 2 12/22/18
DISTRIBUTION: <input type="checkbox"/> CONTRACTOR <input type="checkbox"/> SET DESIGN <input type="checkbox"/> SET CONSTRUCTION <input type="checkbox"/> SET TRUCK <input type="checkbox"/> SET TRUCK	SET #: <input type="checkbox"/> 101 <input type="checkbox"/> 102 <input type="checkbox"/> 103 <input type="checkbox"/> 104 <input type="checkbox"/> 105



**EXT. GOLDEN PALACE**  
GRAPHICS

EXT. GOLDEN PALACE  
GRAPHICS



GOLDEN PALACE

SEAFOOD RESTAURANT

金美斯皇宮大酒樓

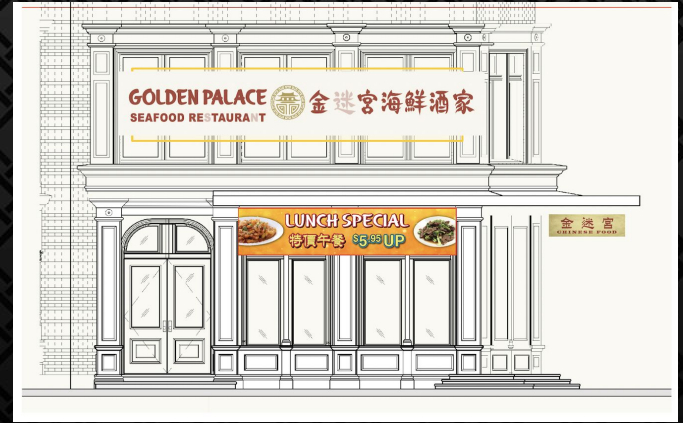
PANTONE 7608C

PANTONE 7407C



"GOLDEN PALACE" SEAFOOD RESTAURANT LOGO  
AMORT

GRAPHIC DESIGNER MAMIE YOUNG



STYLE B

REFERENCE



QTY: 1  
DOUBLE-SIDED, CARVED WOOD SIGN  
PROUD TEXT AND BORDER



EXT STREET - GOLDEN PALACE GRAPHICS - OUTRIGGER SIGN  
AMORT

GRAPHIC DESIGNER MAMIE YOUNG



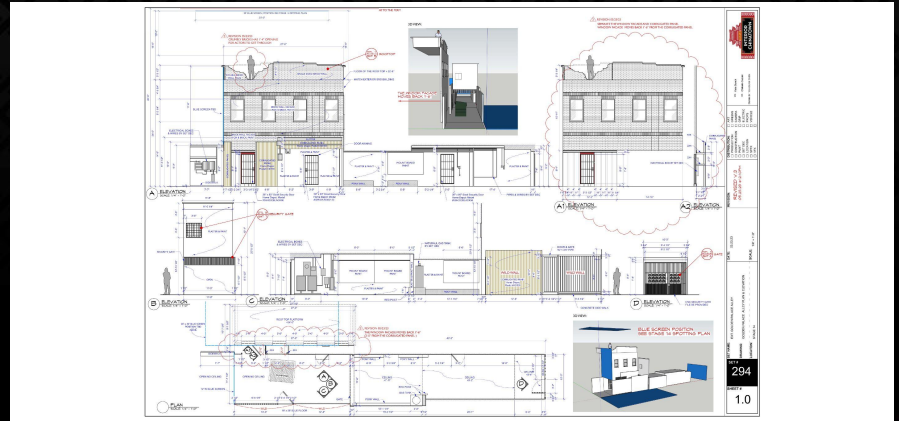
EXT. GOLDEN PALACE  
GRAPHICS



**EXT. GOLDEN PALACE**

ALLEY ON STAGE

EXT. GOLDEN PALACE  
ALLEY ON STAGE





# **INT. GOLDEN PALACE**

STAGE BUILD



INT. GOLDEN PALACE  
REFERENCES



INT. GOLDEN PALACE  
CONCEPT DRAWING



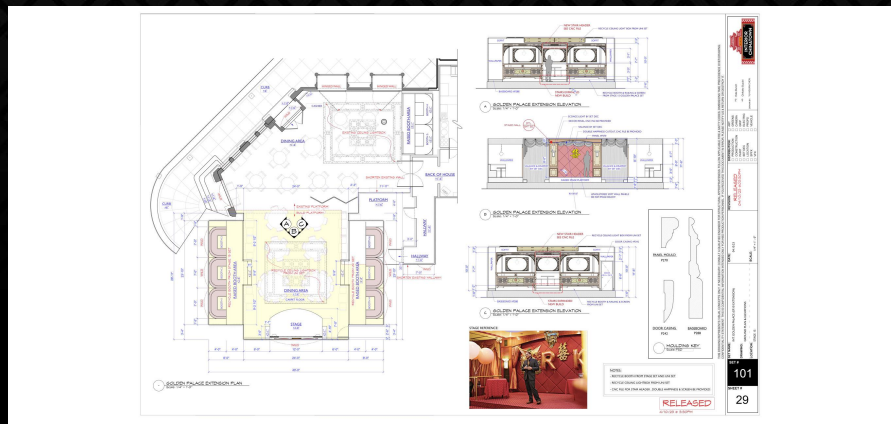
INT. GOLDEN PALACE  
STAGE BUILD



INT. GOLDEN PALACE  
STAGE BUILD



# INT. GOLDEN PALACE BANQUET HALL EXPANSION



INT. GOLDEN PALACE  
KITCHEN



INT. GOLDEN PALACE  
BACK OF THE HOUSE





**INT. SRO**  
REFERENCES



INT. SRO  
REFERENCES



WILLIS' ROOM



FATTY'S ROOM



LILY'S ROOM



HALLWAY





**INT. SRO**  
WILLIS' ROOM

INT. SRO  
WILLIS' ROOM



INT. SRO  
WILLIS' ROOM





**INT. SRO**  
FATTY'S ROOM

INT. SRO  
FATTY'S ROOM



INT. SRO  
FATTY'S ROOM





**INT. SRO**  
LILY'S ROOM



INT. SRO  
LILY'S ROOM



INT. SRO  
LILY'S ROOM





**INT. SRO**  
SIFU'S ROOM

INT. SRO  
SIFU'S ROOM



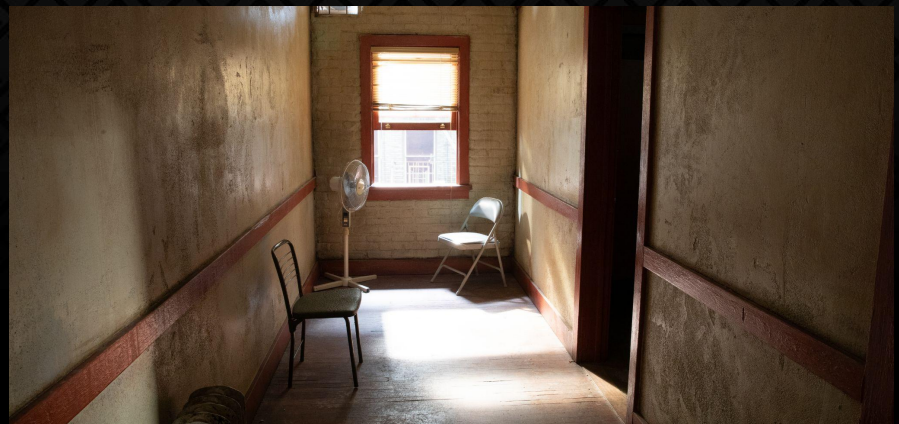


**INT. SRO**  
HALLWAY

INT. SRO  
HALLWAY



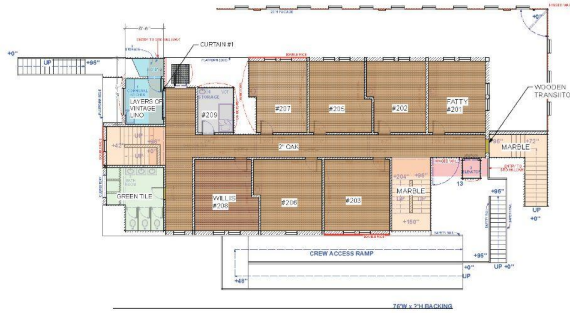
INT. SRO  
HALLWAY



# INT. SRO FLOOR LEVEL CHANGE OVER

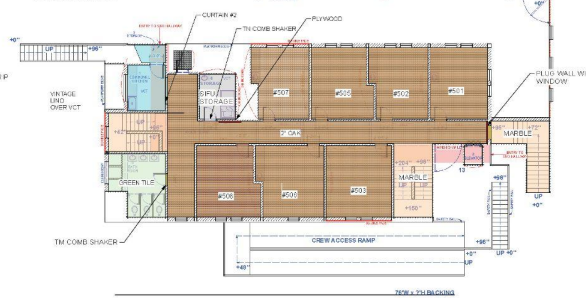
## 2ND FLOOR

HERO LOOK  
ADD CURTAIN #1 TO KITCHEN



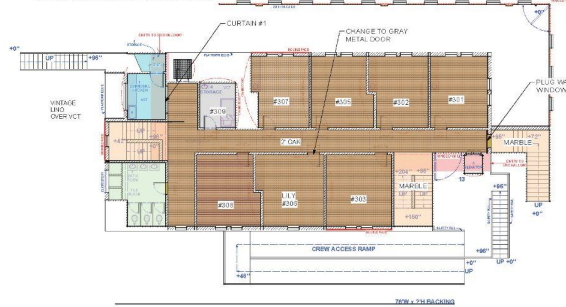
## 5TH FLOOR

ADD CURTAIN #3 TO KITCHEN  
CHANGE HALLWAY DRESSING  
CHANGE DOOR NUMBERS  
CHANGE BATHROOM & SPU DOOR TO TM COMB SHAKER DOOR  
ADD PLYW WALL WITH WINDOW AT END OF HALLWAY  
ADD PLYWOOD NEXT TO SPU ROOM  
STRIKE REFRIGERATOR



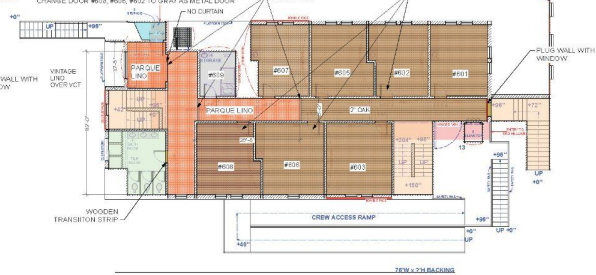
## 3RD FLOOR

ADD CURTAIN #2 TO KITCHEN  
CHANGE HALLWAY DRESSING  
CHANGE DOOR NUMBERS  
CHANGE LVL FLOOR TO GRAY METAL DOOR  
ADD PLY WALL WITH WINDOW AT END OF HALLWAY



## 6TH FLOOR/PARTY FLOOR

STRIKE KITCHEN CURTAIN  
CHANGE FLOOR ADJACENT  
CHANGE HALLWAY DRESSING  
ADD PLY WALL WITH WINDOW AT END OF HALLWAY  
CHANGE DOOR #933, #934, #932 TO GRAY AS METAL DOOR



311 W. 5th St. #100  
TAMARACK  
TAMARACK, ILL.

001	CAD
002	CONSTRUCTION
003	MECHANICAL
004	ELECTRICAL
005	PLUMBING
006	PAINT
007	FINISH
008	LANDSCAPE

DATE: 11.23.22  
RELEASED 11.23.22

DATE: 11.23.22

SCALE: 1/8" = 1'-0"

PROJECT NAME:  
INT. SRO  
CONTRACT NO.:  
LOCATION: STAGE 22

SET #

SHEET #  
111

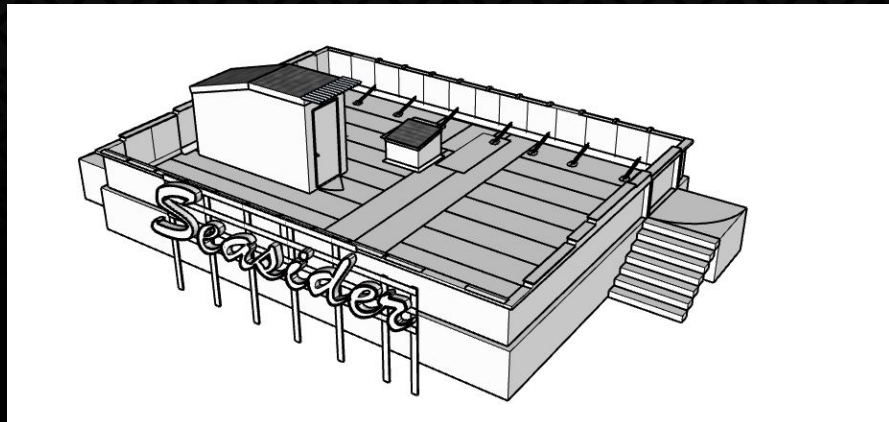
26



**INT. SRO**

ROOF TOP

INT. SRO  
ROOF TOP





**INT. SRO**

**KITCHEN**

INT. SRO  
KITCHEN





**INT. SRO**  
BATHROOM

INT. SRO  
BATHROOM





**INT. PRECINCT**  
PORT HARBOUR PD

INT. PRECINCT  
PORT HARBOUR PD





INT. PRECINCT  
PORT HARBOUR PD



INT. PRECINCT  
PORT HARBOUR PD



INT. PRECINCT  
EVIDENCE AND TECH ROOM





**INT. PRECINCT**

CHANGE OVER

INT. PRECINCT  
CHANGE OVER



INT. PRECINCT  
CHANGE OVER



INT. PRECINCT  
CHANGE OVER



**EXT. CHINATOWN NEIGHBORHOOD**

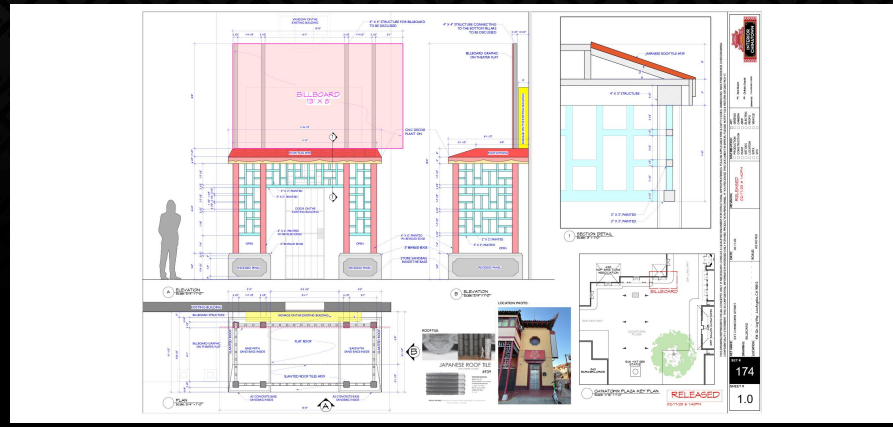
CHINATOWN



EXT. CHINATOWN NEIGHBORHOOD  
CHINATOWN



EXT. CHINATOWN NEIGHBORHOOD  
CHINATOWN



EXT. CHINATOWN NEIGHBORHOOD  
CHINATOWN



EXT. CHINATOWN NEIGHBORHOOD  
CHINATOWN



# EXT. CHINATOWN NEIGHBORHOOD GRAPHICS

**RECTANGULAR LIGHTBOX**

sochi wine  
PREMIUM WINES BY THE GLOSS

QTY: 1  
PRINT ON CLEAR VINYL

**SQUARE SIGN**

QTY: 1  
CONTOUR CUT VINYL

**CIRCULAR OUTRIGGER LIGHTBOX**

QTY: 2  
PRINT ON CLEAR VINYL

**RENTAL LIGHT BOX**

QTY: 1  
PRINT ON CLEAR VINYL

**DOOR GLASS**

QTY: 1 EACH  
CONTOUR CUT LOW-TACK VINYL

**WINDOW GLASS**

QTY: 1 EACH  
PRINT ON LOW-TACK VINYL

WINE SPIRITS BEER

INTERIOR CHINATOWN EXT. CHINATOWN STREET - SOCHI WINE SHOP  
EP 109 GRAPHIC DESIGNER MAMIE YOUNG

**HARD SIGN**

服飾店 Local Town TREND WEAR 男女裝

QTY: 1  
PRINT ON 1/8" SINTRA (SEAMS OK)

**DOOR WINDOWS**

QTY: 1 EACH  
CONTOUR CUT PRINTED VINYL

INTERIOR CHINATOWN EXT. CHINATOWN STREET - CLOTHING STORE  
EP 109 GRAPHIC DESIGNER MAMIE YOUNG

**DOOR BANNER**

BIG KID 玩具店  
HERO TOYS

QTY: 2  
PRINT ON BANNER MATERIAL

INTERIOR CHINATOWN EXT. CHINATOWN STREET - TOY STORE GRAPHICS  
EP 109 GRAPHIC DESIGNER MAMIE YOUNG

**LIGHT BOX**

美味福州麵館  
TASTY FUZHOU NOODLE HOUSE

**WINDOW**

**DOOR**

INTERIOR CHINATOWN EXT. CHINATOWN STREET - NOODLE HOUSE  
EP 109 GRAPHIC DESIGNER JOE CHANG

**LIGHT BOX**

LILY WU  
Your Dream Our Business

JP 翡翠地產  
JULIE HOANG-TRAN

TOP 2% OF AGENTS

QTY: 1  
PRINT ON 1/8" SINTRA (SEAMS OK)

**REACTOR BENCH AD**

INTERIOR CHINATOWN EXT. STREET  
EP 109 REACTOR BENCH AD GRAPHIC DESIGNER JOE CHANG

**LIGHT BOX**

PHỞ 5000  
越南牛肉粉 • 雞粉 • 海鮮粉

INTERIOR CHINATOWN EXT. CHINATOWN STREET - PHO 5000  
EP 109 GRAPHIC DESIGNER JOE CHANG

# COMMERCIALS

AD GUY

# COMMERCIALS

## KLEEN STIK



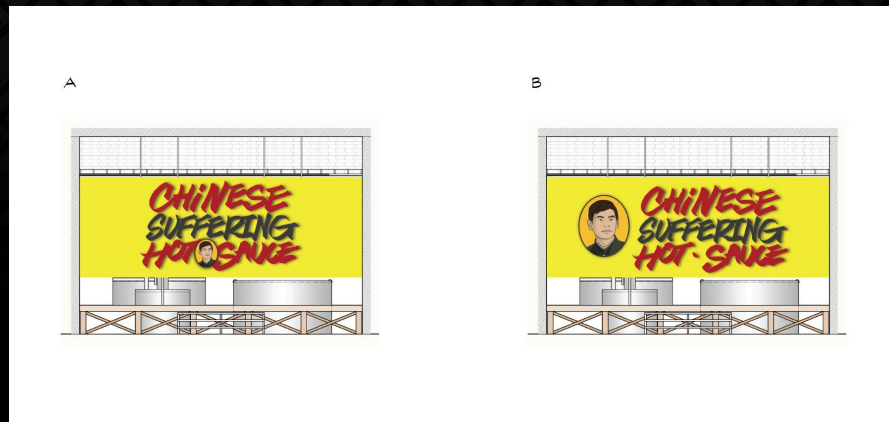
LABEL



REFERENCE



COMMERCIALS  
CHINESE SUFFERING HOT SAUCE







**INT. TUNNEL**  
PORT HARBOUR

INT. TUNNEL  
PORT HARBOUR



INT. TUNNEL  
PORT HARBOUR



# INT. TUNNEL GRAPHICS

**STOREFRONT 1 - RAY'S SALOON**

Detailed architectural drawing of Storefront 1 showing window dimensions and vinyl placement. The storefront is 4'8 1/2" wide and 6'4 1/2" high. There are four vinyl graphics: QTY 2 PRINTED VINYL (Ray's SALOON logo), QTY 2 PRINTED ON SATIN PAPER (beer images), QTY 2 PRINTED ON SATIN PAPER (beer images), and QTY 1 BUSH PRINTED ON SATIN PAPER (beer images).

UNDERGROUND TUNNEL - STOREFRONT 1 - RAY'S SALOON  
GRAPHIC DESIGNER NAME YOUNG

**STOREFRONT 3 - LOAN ASSOCIATION**

Detailed architectural drawing of Storefront 3 showing window dimensions and vinyl placement. The storefront is 4'8 1/2" wide and 7'0" high. The vinyl graphics include: QTY 1 PRINTED VINYL (Loan Association logo), QTY 1 PRINTED VINYL (Loan Association logo), and QTY 1 PRINTED VINYL (Loan Association logo). The text on the vinyl includes: 貸款協會, 貸款協會, LOANS CASH FOR GOLD, 貸款諮詢, 資金管理, 利率計算, 信用評估, 貸款評估, 貸款諮詢, 銀行轉帳, 會員投資, 匯款匯票, 風險評估.

Translation of the List of services:  
Loan services, Interest rate calculation, Loan assessment, Bank transfer, Remittance services, Capital management, Credit assessment, Information inquiry, Member investment, Risk assessment.

UNDERGROUND TUNNEL - STOREFRONT 3 - LOAN ASSOCIATION  
GRAPHIC DESIGNER NAME YOUNG

Detailed architectural drawing of Storefront 4 showing window dimensions and vinyl placement. The storefront is 44'1/2" wide and 7'0" high. The vinyl graphics include: BUSINESS HOURS, WE ARE CLOSED ON SUNDAYS, 20% OFF ALL SMALL IMPORTS, EAST WEST TRADING CO., ORIENTAL IMPORTS, BUSINESS HOURS, WE ARE CLOSED ON SUNDAYS, 20% OFF ALL SMALL IMPORTS, NEW! BEST IMPORTED CHINESE FOODS.

Detailed architectural drawing of Storefront 5 showing window dimensions and vinyl placement. The storefront is 7'0" wide and 6'4 1/2" high. The vinyl graphics include: DRYWALL & PAINT, STOREFRONT 5 WINDOW, STOREFRONT 5 WINDOW WITH A K&E STOCK DOOR.

UNDERGROUND TUNNEL - STOREFRONT 4 - EAST WEST TRADING CO.  
GRAPHIC DESIGNER NAME YOUNG

**STOREFRONT 7 - SHANGHAI EXPRESS**

MYSTERY BOOKS & GIFTS

Detailed architectural drawing of Storefront 7 showing window dimensions and vinyl placement. The storefront is 40" wide and 6'4 1/2" high. The vinyl graphics include: QTY 1 PRINTED VINYL (Shanghai Express logo), QTY 1 PRINTED VINYL (Shanghai Express logo), QTY 1 PRINTED VINYL (Shanghai Express logo), and QTY 1 PRINTED VINYL (Shanghai Express logo).

UNDERGROUND TUNNEL - STOREFRONT 7 - SHANGHAI EXPRESS MYSTERY BOOKS & GIFTS  
GRAPHIC DESIGNER NAME YOUNG

POSTERS

VINYL

Detailed architectural drawing of Storefront 8 showing window dimensions and vinyl placement. The storefront is 32' wide and 7'0" high. The vinyl graphics include: POSTERS (various notices), VINYL (various notices), and a large poster for '移民入籍專業服務中心'.

UNDERGROUND TUNNEL - STOREFRONT 8 - SHANGHAI EXPRESS MYSTERY BOOKS & GIFTS  
GRAPHIC DESIGNER JOE CHANG

POSTERS

VINYL

Detailed architectural drawing of Storefront 9 showing window dimensions and vinyl placement. The storefront is 44' wide and 7'0" high. The vinyl graphics include: POSTERS (various notices), VINYL (various notices), and a large poster for 'BUY SELL TRADE'.

UNDERGROUND TUNNEL - STOREFRONT 9 - SHANGHAI EXPRESS MYSTERY BOOKS & GIFTS  
GRAPHIC DESIGNER JOE CHANG

POSTERS

VINYL

Detailed architectural drawing of Storefront 10 showing window dimensions and vinyl placement. The storefront is 44' wide and 7'0" high. The vinyl graphics include: POSTERS (various notices), VINYL (various notices), and a large poster for '離婚律師事務所'.

UNDERGROUND TUNNEL - STOREFRONT 10 - SHANGHAI EXPRESS MYSTERY BOOKS & GIFTS  
GRAPHIC DESIGNER JOE CHANG



**INT. BUNKER**

PORT HARBOUR

INT. BUNKER  
PORT HARBOUR



INT. BUNKER  
PORT HARBOUR



**PRODUCTION DESIGNER**

**ART DIRECTOR**

**ASSISTANT ART DIRECTOR**

**GRAPHIC DESIGNER**

**GRAPHIC DESIGNER**

**SET DESIGNER**

**SET DESIGNER**

**SET DESIGNER**

**SET DECORATOR**

**ILLUSTRATOR**

KATE BUNCH

CHIKAKO SUZUKI

SASHA MIELES

MAMIE YOUNG

JOE CHANG

YU-HSUAN CHEN

DINA MUSTAKIM

SARAH BROWN

ADRIENNE GARCIA

FIREBALL TIM LAWRENCE