



THE SIX TRIPLE EIGHT



THE SIX TRIPLE EIGHT | FYC

ART DEPARTMENT

PRODUCTION DESIGNER *SHARON BUSSE*
SUPERVISING ART DIRECTOR (US) *B. MAXWELL FASEN*
SUPERVISING ART DIRECTOR (UK) *SAM STOKES*
ART DIRECTOR (US) *JOSH BORTON,*
ART DIRECTOR (US) *HUGO SANTIAGO*
SENIOR ART DIRECTOR (UK) *SARAH HAULDREN*
ART DIRECTORS (UK) *CATRIONA MCKAIL*
ASSISTANT ART DIRECTOR ART DIRECTOR (US) *EZEKIEL DUCKSWORTH III*
ASSISTANT ART DIRECTOR (UK) *EMMA RYDER*
STANDBY ART DIRECTOR (UK) *ELLIOT-JOSHUA COOGAN*
SENIOR LEAD SET DESIGNER (US) *PHILIP TOOLIN*
SET DESIGNER (US) *JOSEE LEMONNIER*
SET DESIGNER (US) *CAROLINE QUINN*
JUNIOR DRAUGHTSPERSON (UK) *LUCY STILL*
ILLUSTRATOR (US) *JOANNA BUSH*
LEAD GRAPHIC DESIGNER (US) *KAREN TENEYCK*
GRAPHIC DESIGNER (US) *CLARA SPARKMAN*
GRAPHIC ARTS DIRECTOR (UK) *RUTA DAUBURE*
GRAPHIC DESIGNER (UK) *GABRIELLE LEON*
STORYBOARD ARTIST (US) *BRIAN MCKISSICK*
SET DECORATOR (US) *MARIA NAY*
SET DECORATOR (UK) *CHARLIE LYNAM*


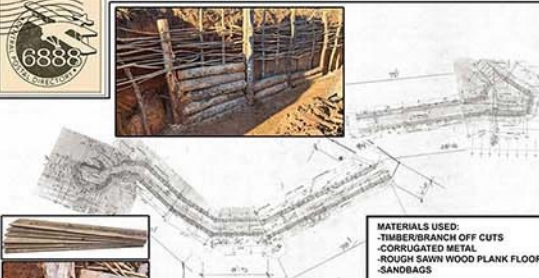


SET #101 WORLD WAR II FRONTLINES (CIRCA 1943)

THE SIX TRIPLE EIGHT | FYC





MATERIALS USED:
 -TIMBER BRANCH OFF CUTS
 -CORRUGATED METAL
 -ROUGH SAWN WOOD PLANK FLOOR
 -SANDBAGS

STICKED WALL MATERIALS USED:
 -CORRUGATED METAL
 -ROUGH SAWN WOOD PLANK FLOOR
 -SANDBAGS

WOODEN WALL MATERIALS USED:
 -TIMBER BRANCH OFF CUTS
 -ROUGH SAWN WOOD PLANK FLOOR
 -SANDBAGS

LOWER WALL MATERIALS USED:
 -CORRUGATED METAL

SET: #101 EXT. EUROPE 1943 (MORNING) LOCATION: TPS OPEN GROUNDS
 FRONTLINE TRENCHES - ART DIRECTION INTENTIONS DATE: 11/28/2022 PAGE # 1



6888

AFTERMATH SITE NEEDS:
 -P51 MUSTANG BODY
 -VFX ASSISTANCE NEEDED
 -P51 MUSTANG DEBRIS
 -SMOKE/FLAME BARS
 -VFX ASSISTANCE NEEDED
 -DEAD/BODY PARTS

SCROGGIN'S SUPPLIES THIS

VFX SUPPLIES THIS

PRACTICAL DRESSING TO COME FROM SCROGGINS

SET: #101 EXT. EUROPE 1943 (MORNING) LOCATION: TPS OPEN GROUNDS
 FRONTLINE ABRAM'S CRASH SITE PLAN - ART DIRECTION INTENTIONS DATE: 11/29/2022 PAGE # 4

MEASUREMENT FROM ART DEPT

BOTH SIDES OF TAIL ON THE DIAGONAL AS SHOWN BELOW SCALE 3" = 1'-0" MAKE 5 SHEETS

MAX: I'm ordering an extra sheet since we don't know the exact measurements

25'-1/4" FOR LEFT WING ONLY INCL. ON RIGHT WING! SIZE APPROX. MAKE 1 of the 25'-1/4" STAR & BARS

NICKNAME HERE!

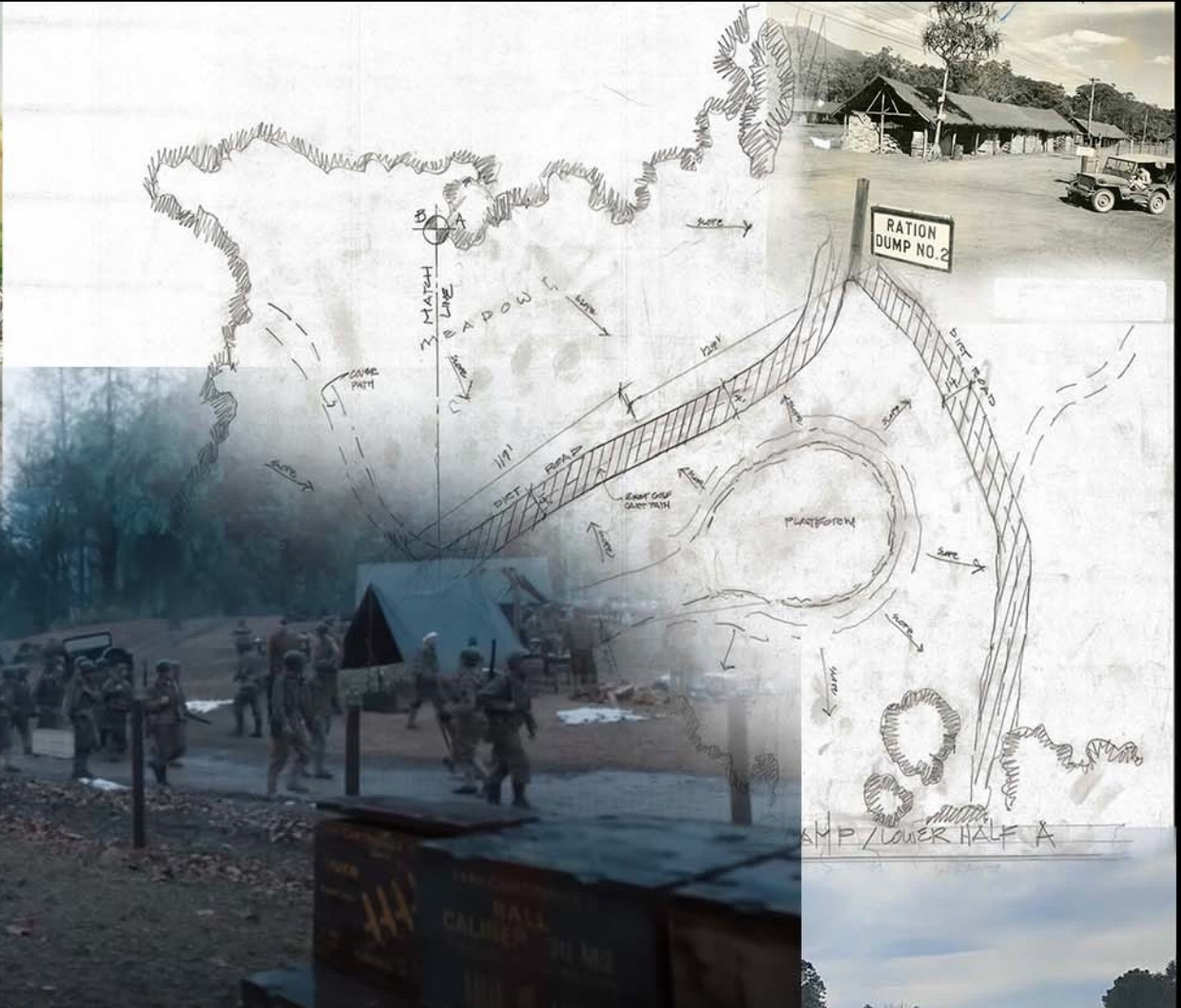
3" HAND POINCE 83-78" x 23-1/2"

ART DEPT. MAKE POINCE FOR 3" DAVID LEON. ALL OTHER GRAPHICS SHOULD BE ON VINYL. SCALE 3" = 1'-0"

REMOVED









SET #103 EXT. HARRISTOWN, PA (CIRCA 1942)

THE SIX TRIPLE EIGHT | FYC



MAIN STREET- ELEVATION A



- STREET SITE NEEDS:**
- SIGN COVERAGE
 - WINDOW DRESSING
 - REMOVAL OF STREET LINES
 - PERIOD TRAFFIC LIGHTS
 - PERIOD BKG VEHICLES



SET: #103 EXT. NORTHERN CITY, USA - STREETS (DAY)

NORTHERN CITY STREET PLAN - ART DIRECTION INTENTIONS



- STREETS VFX NEEDS:**
- REMOVE OF BKG ELEMENTS
 - *MODERN TRAFFIC LIGHTS
 - *MODERN STREET LIGHTS
 - *ANY NON-PERIOD ITEMS THAT CANT BE COVERED PRACTICALLY

LOCATION: CEDARTOWN, GA.

DATE: 11/29/2022

PAGE # 1

LOCATIONS

MAIN STREET
 COVER LANE LINES W/ VINYL
 LAYING LIGHT LAYER OF TOP SOIL TO STREET
 VINYL NEED STREET CLEANING
 BUILDING SIGN COVER/REPLACEMENT/RESTORE
 SET DECORATION TO PLAN
 WINDOW GRAPHICS/REPLACEMENT/RESTORE
 *NEED PRINT COMPANY INFO

REPLACE / RESTORE WINDOW GRAPHICS
 REPLACE / RESTORE STREET ELEMENTS
 COVER MURALS

BOX ALL NON-PERIOD ELEMENTS (ALL AREAS)
 REPLACEMENT OF SELECT STREET SIGNS
 LANE LINE COVERS/VINYL
 BUILDING SIGNAGE QUANTITY:

ALLEYWAY
 BOX OUTS OF NON PERIOD ELEMENTS
 AGE VINYS AND GREENS IN ALLEY (NON PERIOD COVER/UP)
 COVER UP BUILDING SIGNS TO PLAN
 SET DECORATION TO PLAN
 REPLACE AND RESTORE VINYL GRAPHICS

REPLACE / RESTORE BUILDING SIGNS / WINDOW GRAPHICS

SET: #103 EXT. HARRISTOWN, PA - STREETS LOCATION: MAIN STREET, CEDARTOWN, GA.
 ART DIRECTION INTENTIONS - LOCATIONS DATE: 1/23/2023 PAGE #

CONSTRUCTION

MAIN STREET
 COVER LANE LINES W/ VINYL (SCENIC) / DIRT ROADS WITH TOP SOIL (GREENS)
 COVER UP BUILDING SIGNS TO PLAN
 HAND PAINTED SIGNAGE AND WINDOW GRAPHICS
 BOX OUT OF NON PERIOD ELEMENTS (MAIN STREET)
 AGING OF SET DECORATION (SCENIC)
 RESTORATION

LANE LINE COVERS/VINYL
 TOPSOIL SAMPLE ON ASPHALT

BOX NON PERIOD ELEMENTS
 BUILDING SIGNAGE QUANTITY:

ALLEYWAY
 COVER NEW AREAS AND METERS
 BOX OUT OF NON PERIOD ELEMENTS
 BUILDING SIGNS TO PLAN

SET: #103 EXT. HARRISTOWN, PA - STREETS LOCATION: MAIN STREET, CEDARTOWN, GA.
 ART DIRECTION INTENTIONS - CONSTRUCTION DATE: 1/23/2023 PAGE #

SCENIC

MAIN STREET
 COVER LANE LINES W/ VINYL
 PAINT BUILDING SIGNAGE TO PLAN
 HAND PAINTED SIGNS AND WINDOW GRAPHICS
 COLOR MATCHES FOR BOXING NON-PERIOD ELEMENTS
 AGING OF SET DECORATION
 RESTORE GRAPHICS

REPLACE / RESTORE WINDOW GRAPHICS
 COVER MURALS

COLOR MATCHES FOR BOXED NON-PERIOD ELEMENTS
 AGE REPLACEMENT SIGNS
 LANE LINE COVERS/VINYL
 BUILDING SIGNAGE QUANTITY:

ALLEYWAY
 PAINTFACE BOX OUTS OF NON PERIOD ELEMENTS
 AGE VINYS AND GREENS IN ALLEY (NON PERIOD COVER/UP)
 AGING OF SET DECORATION (SCENIC)
 VINYL'S AND HAND PAINTED SIGNS W/AGING
 RESTORE GRAPHICS

REPLACE / RESTORE WINDOW GRAPHICS

SET: #103 EXT. HARRISTOWN, PA - STREETS LOCATION: MAIN STREET, CEDARTOWN, GA.
 ART DIRECTION INTENTIONS - SCENIC DATE: 1/23/2023 PAGE #

SET: #103 EXT. HARRISTOWN, PA - STREETS LOCATION: MUSIC DEPOT, MAIN STREET, CEDARTOWN, GA.
 ART DIRECTION INTENTIONS - ACTIVE AREAS DATE: 1/23/2023 BUILDING NUMBER: 8338

SET: #103 EXT. HARRISTOWN, PA - STREETS LOCATION: SOUTHERN SASS, MAIN STREET, CEDARTOWN, GA.
 ART DIRECTION INTENTIONS - ACTIVE AREAS DATE: 1/23/2023 BUILDING NUMBER: 8338

SET: #103 EXT. HARRISTOWN, PA - STREET LOCATION: PIPER'S CAFE, CEDARTOWN, GA.
 ART DIRECTION INTENTIONS - SCENIC'S CAFE DATE: 1/23/2023 BUILDING NUMBER: 8338

SET: #103 EXT. HARRISTOWN, PA - STREETS LOCATION: BUSSET'S FLOURISH, MAIN STREET, CEDARTOWN, GA.
 ART DIRECTION INTENTIONS - ACTIVE AREAS DATE: 1/23/2023 BUILDING NUMBER: 8338

NO HELP WANTED
 PRIVATE ROOMS FOR TOURIST
 EMPLOYMENT OFFICE
 TAXICABS LOAD FROM SIDEWALK
 SODA CIGARETTES CANDIES
 E.H. TENEVCK JR. CO. MACHINISTS SHOP IN REAR
 STORE FOR RENT
 ROOM FOR RENT
 DRESSMAKING FOR MEN, WOMEN & CHILDREN
 SPECIALIZING IN SHIRTS, BLOUSES, LADIES SUITS ETC. TO-59226

STRAWBERRIES
APPLES & CHERRIES
LOCAL CORN
TOMATOES
ICEBURG LETTUCE
LONG BEANS
ONIONS & LEEKS



SET #103 EXT. HARRISTOWN, PA (CIRCA 1942)

THE SIX TRIPLE EIGHT | FYC



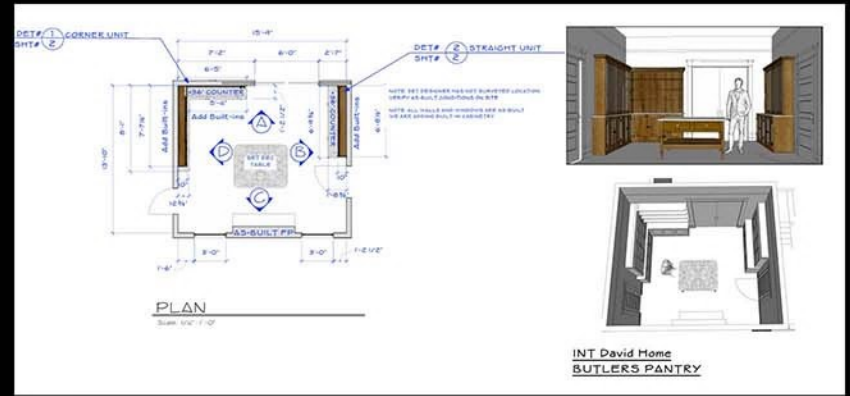
SET #104/105 I/E. HARRISTOWN HIGH SCHOOL

THE SIX TRIPLE EIGHT | FYC



<p>AVOID PLANS TO VIEW MLK HOME</p> <p>VIEW LEFT OF HOUSE</p>	<p>FRONT OF HOUSE</p>	<p>VIEW RIGHT OF HOUSE</p> <p>LENA'S APPROACH & HOPSCOTCH SETUP</p>
<p>AVOID PLANS TO VIEW MLK HOME</p>		<p>CHANGE HOUSE NUMBERS TOUCH UP PAINT RESTORE</p> <p>CAN WE FIX THIS RAILING IF ASKED?</p>
<p>SET: #109/110 I/E. DERRIECOTT HOME FRONT LOCATION: 510 AUBURN AVE NE ART DIRECTION INTENTIONS - "DERRIECOTT HOME FRONT" DATE: 2/8/2023 PAGE #2</p>		







PHILADELPHIA RAPID TRANSIT SYSTEM

- REST ROOMS
- BAGGAGE RM.
- WAITING ROOM
- TICKET OFFICE

Please
NO ALCOHOL
BEYOND THIS POINT

↑
MOOR STREET

FOR TRAIN "TITLE"
45'-6" X 1'-0"
SCALE 1" = 1'-0"
**OFFICES
100-120**
AUTHORIZED
PERSONNEL
ONLY

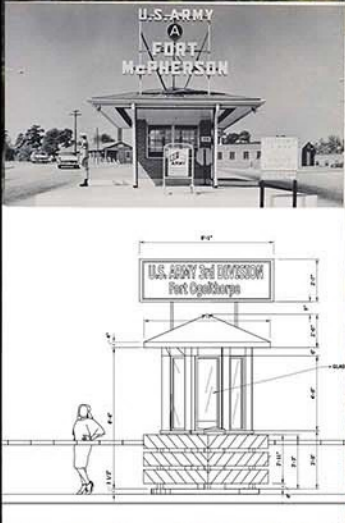
HARRISTOWN

HARRISTOWN

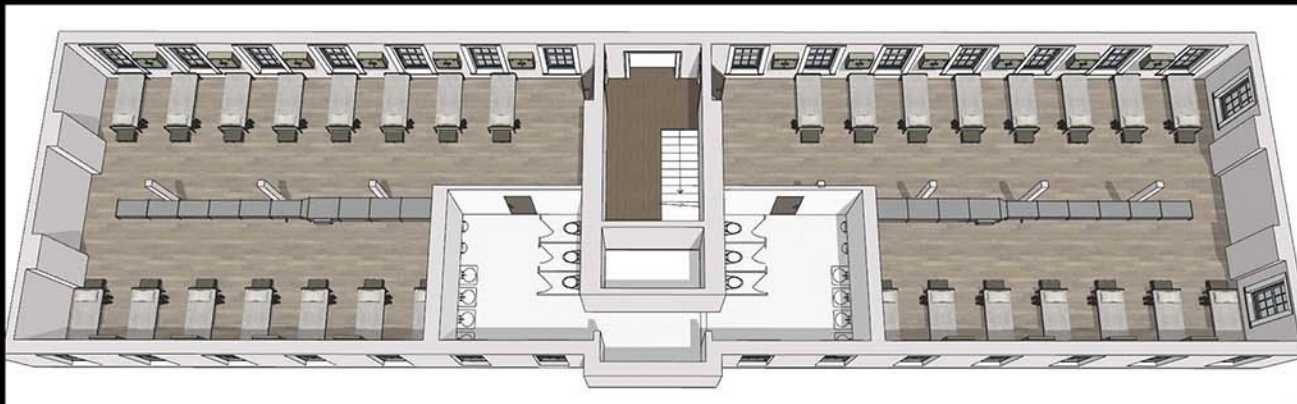


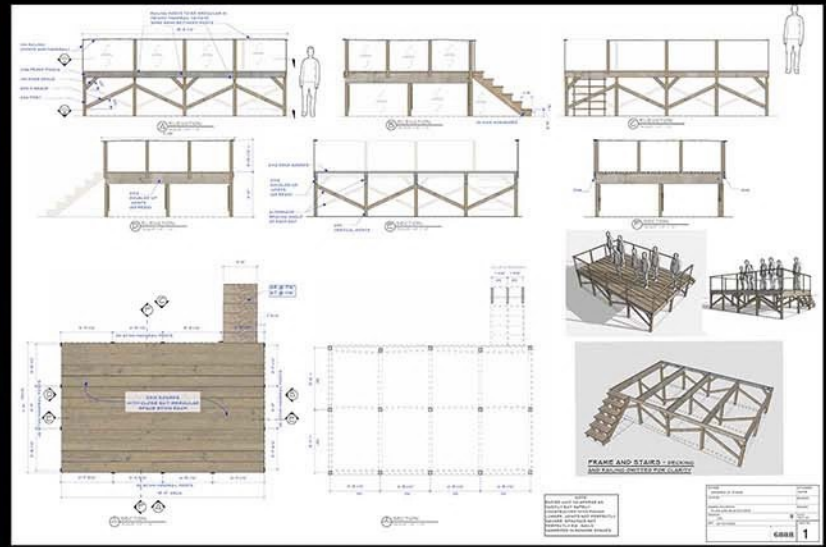
SET #120 I/E. HARRISTOWN TRAIN STATION

THE SIX TRIPLE EIGHT | FYC





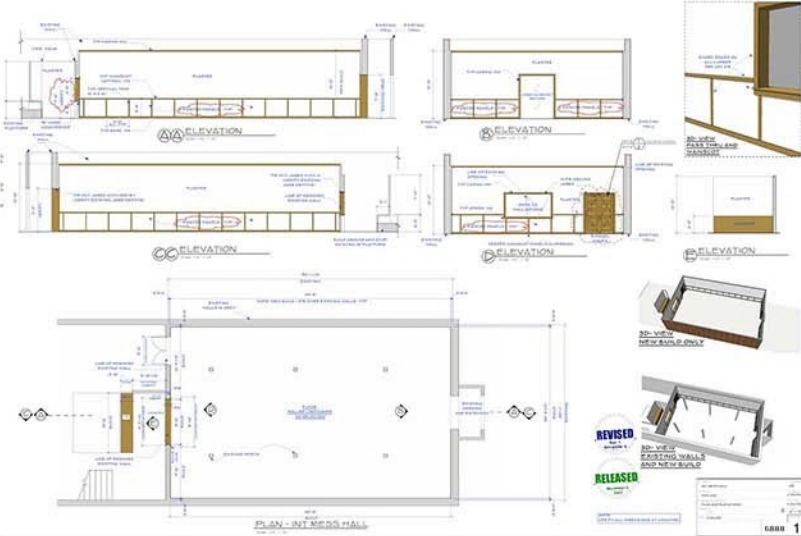




SET #129 INT. FT. OGLETHORPE- REVEILLE

THE SIX TRIPLE EIGHT | FYC





LUNCHROOM ETIQUETTE

- **Clean up after yourself:** Make sure your area is clean of spills and food, throw out all trash and put trays away in the correct location before leaving.
- **Don't exclude:** Include everyone who wants to sit at a table (provided there are available seats).
- **Be respectful of cafeteria staff:** Always remember to say "please" and "thank you" to servers and other staff.
- **Don't waste food:** Don't get more from the cafeteria than you can eat.
- **Make healthy choices:** Try to choose healthy options from all the essential food groups.
- **Be polite:** Use good table manners and an indoor voice.

MyDoorSign.com

MESS HALL ETIQUETTE

- CLEAN UP YOUR AREA**
Make sure your area is clean of spills and food, throw out all trash, return trays.
- BE RESPECTFUL TO STAFF**
Always remember to say "please" and "thank you".
- DON'T WASTE FOOD**
Don't get more food than you can eat.
- BE POLITE**
Use good table manners and keep voices lower inside.

PAPER COLOR:
 ■ PMS 7682
 ■ PMS 186
 ■ BLACK

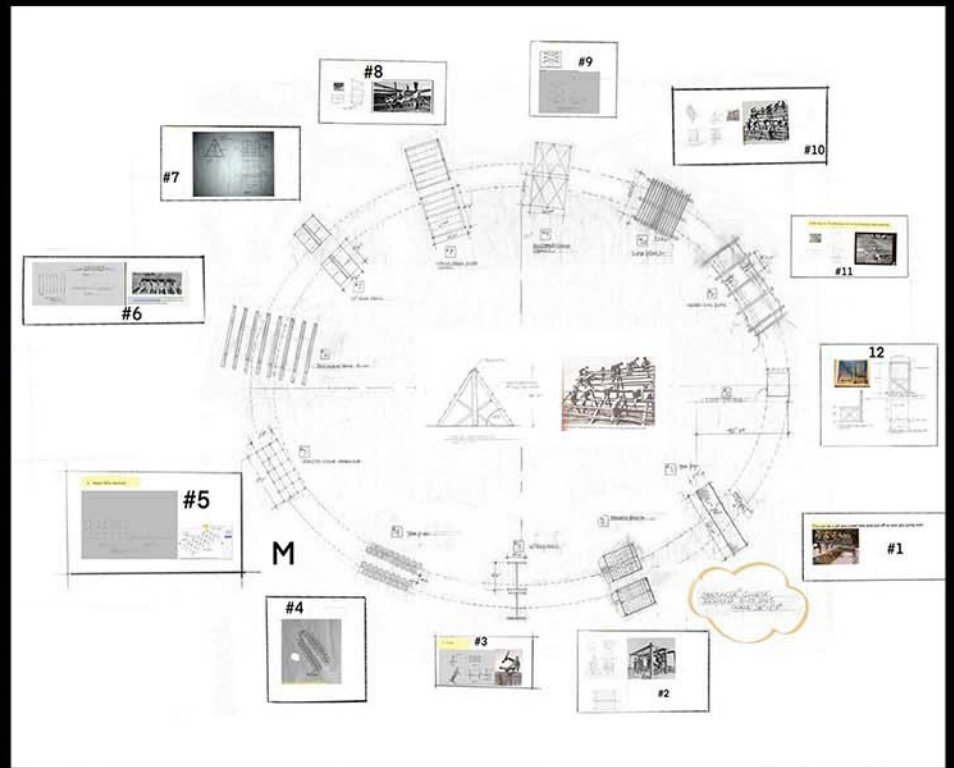
SIZE TBD

THIS IS 'THREE INCH SANS'
IT IS IN THE FONTS FOLDER
ON DROPBOX

V01
 BARN NUMBER 323-777-9794
 3237-327-327
 SET NO.: 133 - MESS HALL
 DATE: 12/16/22

CLEARANCE: No issues.





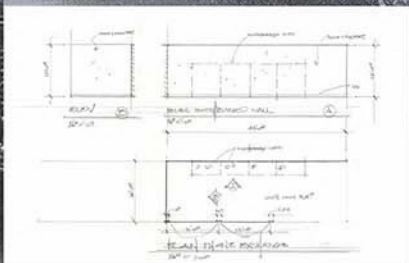
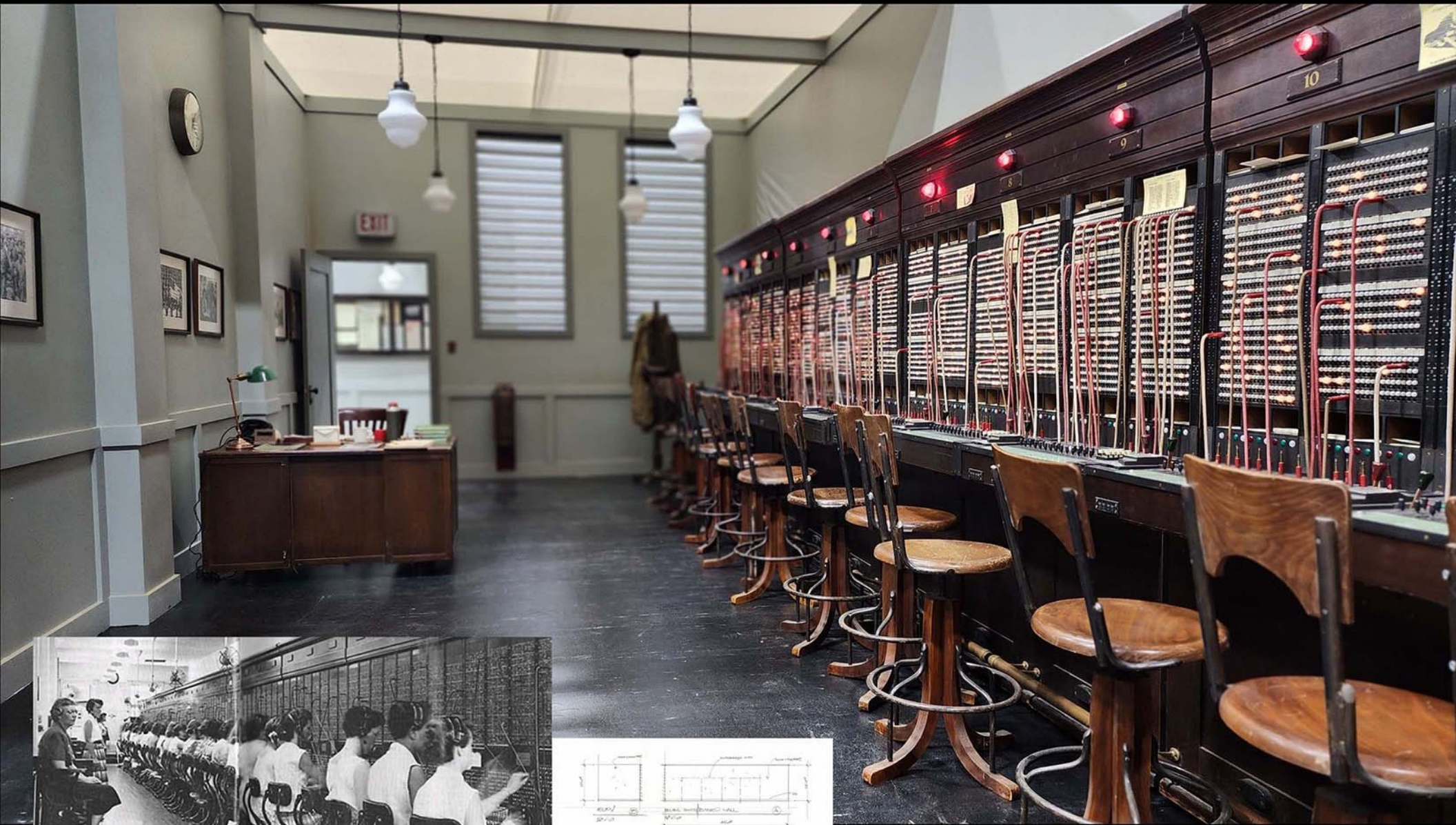


SET #135 INT. FT. OGLETHORPE - SECRETARY DELORES' DESK **THE SIX TRIPLE EIGHT** | FYC



SET #136 INT. FT. OGLETHORPE - WAC TYPE ROOM

THE SIX TRIPLE EIGHT | FYC

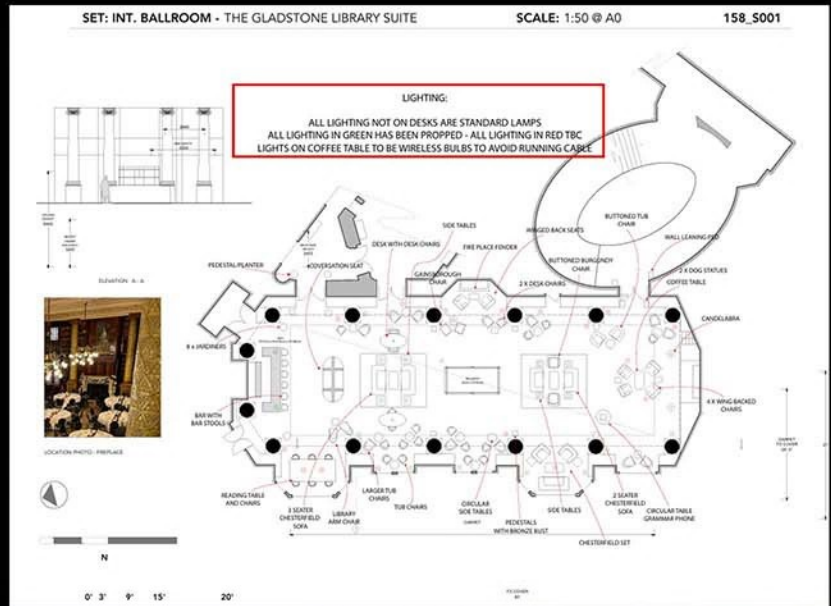


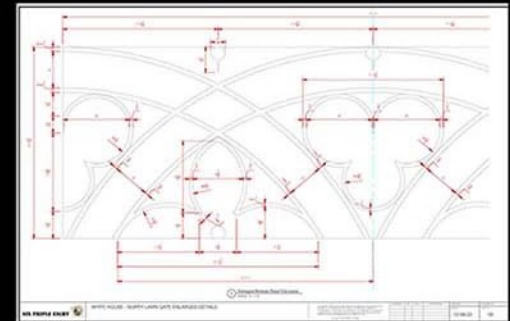
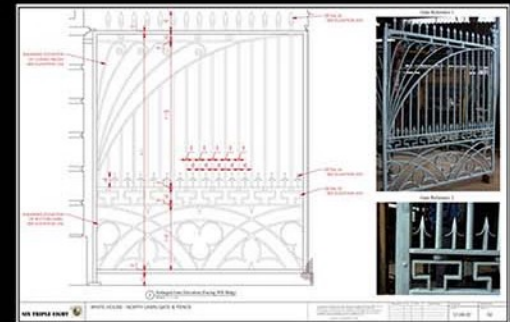
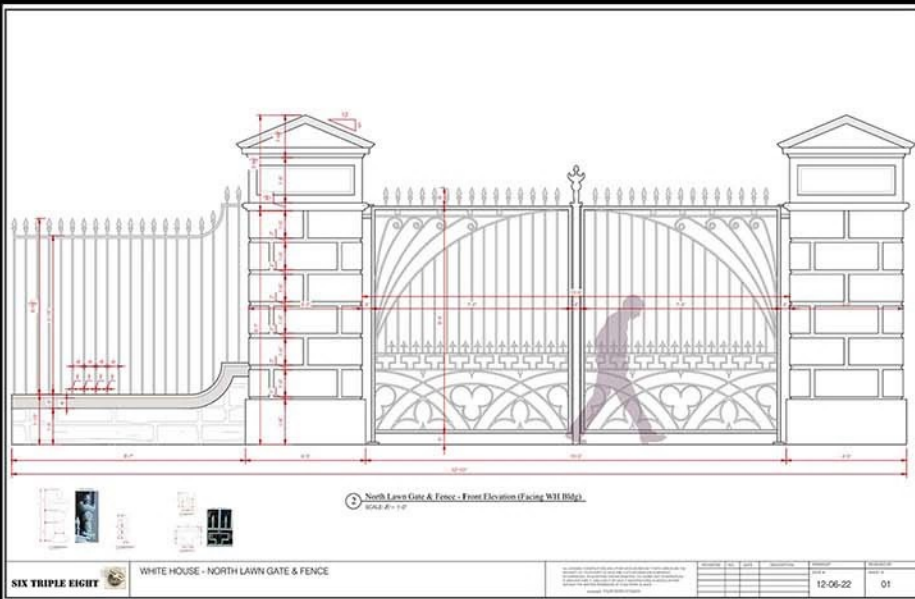
SET #139 INT. FT. OGLETHORPE - WAC SWITCHBOARD ROOM **THE SIX TRIPLE EIGHT** | FYC

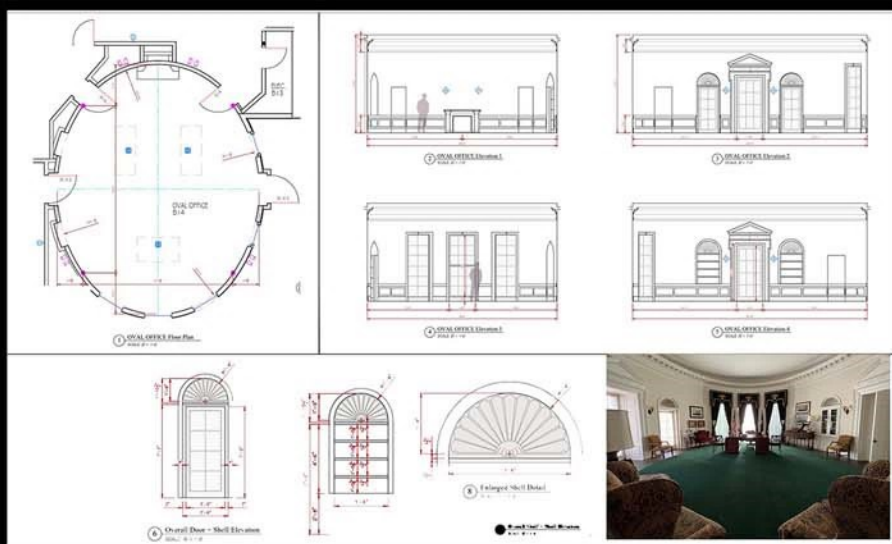




SET #143 INT. FT. OGLETHORPE - COL. DAVENPORT'S OFFICE **THE SIX TRIPLE EIGHT** | FYC







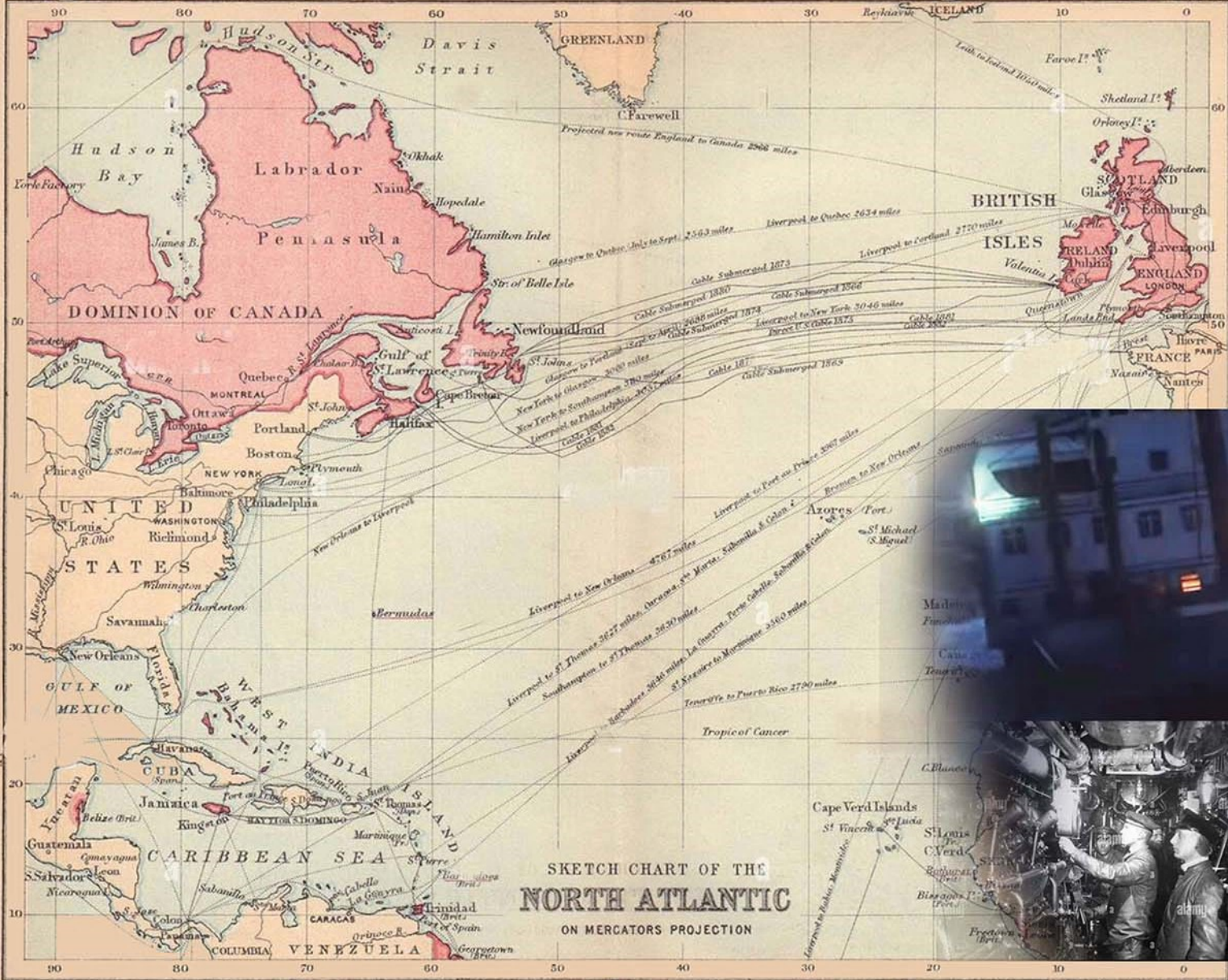
SET #144 WHITE HOUSE- OVAL OFFICE (FDR ADMINISTRATION)

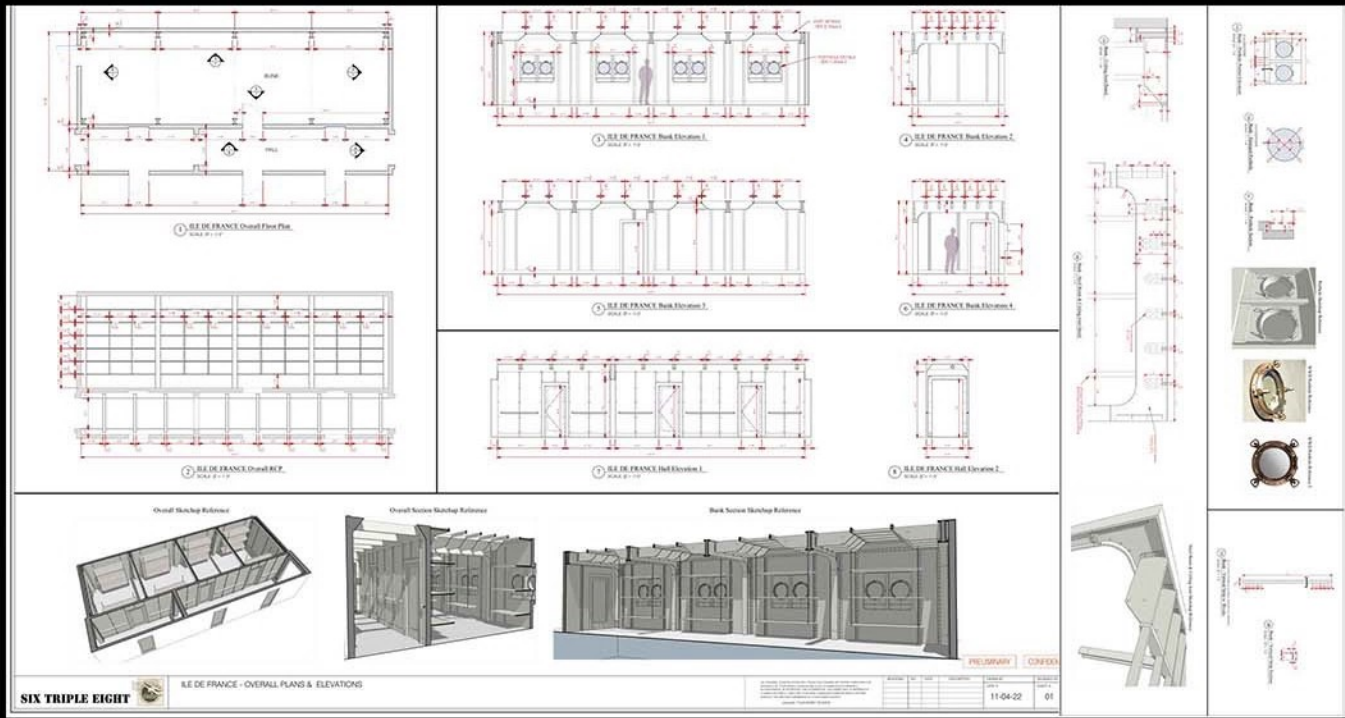
THE SIX TRIPLE EIGHT | FYC

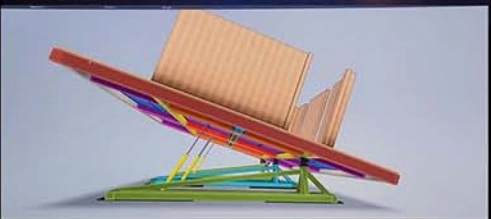
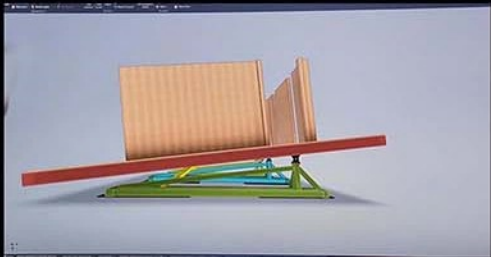


SET #196 WHITE HOUSE- GREAT HALL

THE SIX TRIPLE EIGHT | FYC







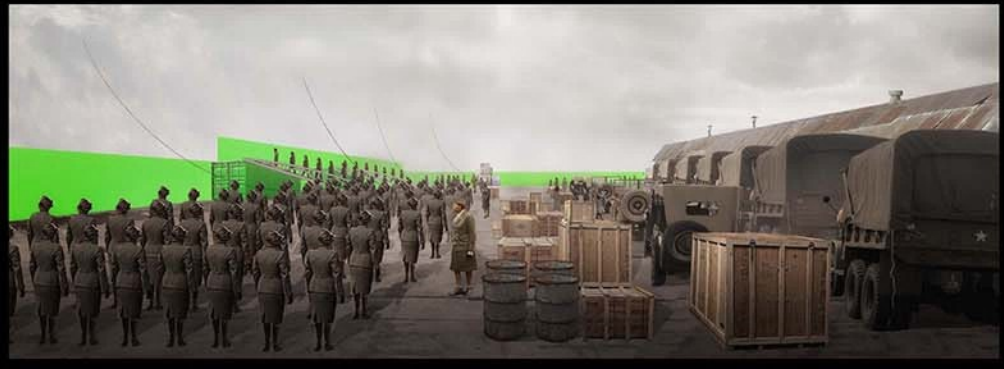
SET #150 IL DE FRANCE (WAC TRANSPORT SHIP)

THE SIX TRIPLE EIGHT | FYC

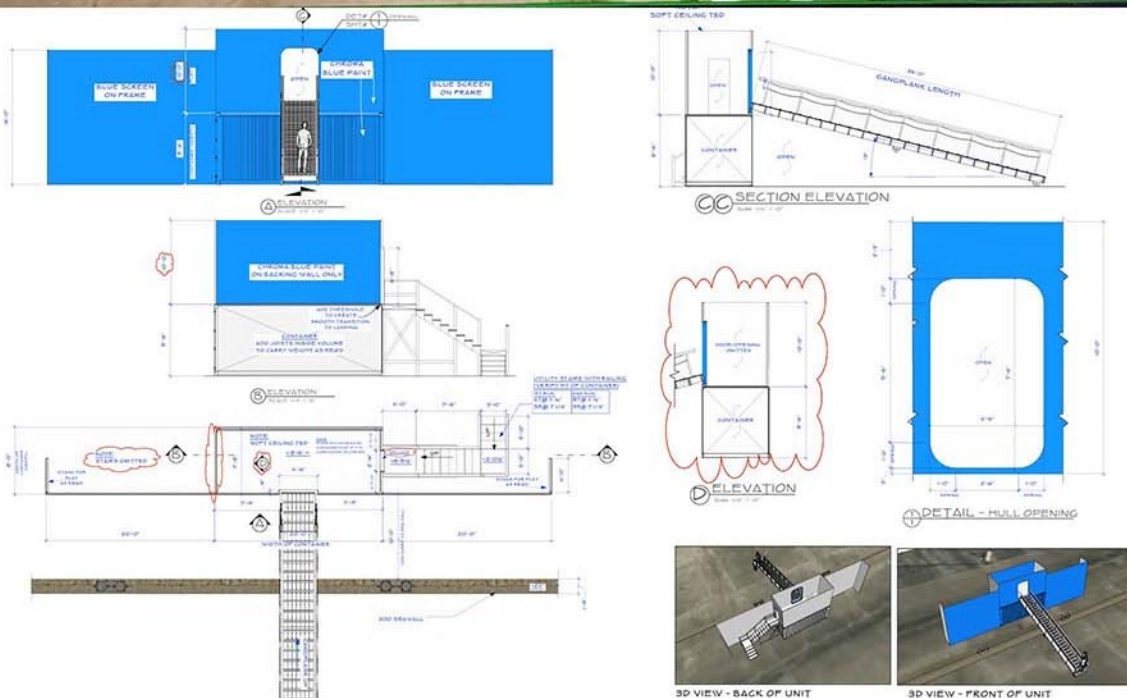


SET #150 IL DE FRANCE (WAC TRANSPORT SHIP)

THE SIX TRIPLE EIGHT | FYC



SET #154 BIRMINGHAM, ENGLAND - WAC ARRIVAL / DOCKS **THE SIX TRIPLE EIGHT** | FYC



PLAN - GLASGOW DOCK

EXT GLASGOW DOCK - BLUESCREEN FLATS AND GANGPLANK EXIT (BUILD #2)

REVISED

6888 1 of 2

THE SIX TRIPLE EIGHT



NETFLIX



NETFLIX



THE SIX TRIPLE EIGHT



N



SET #154 BIRMINGHAM, ENGLAND - WAC ARRIVAL / DOCKS **THE SIX TRIPLE EIGHT** | FYC



SET #155 STREETS OF BIRMINGHAM, ENGLAND

THE SIX TRIPLE EIGHT | FYC



SET #155 STREETS OF BIRMINGHAM, ENGLAND

THE SIX TRIPLE EIGHT | FYC



SET #155 STREETS OF BIRMINGHAM, ENGLAND

THE SIX TRIPLE EIGHT | FYC

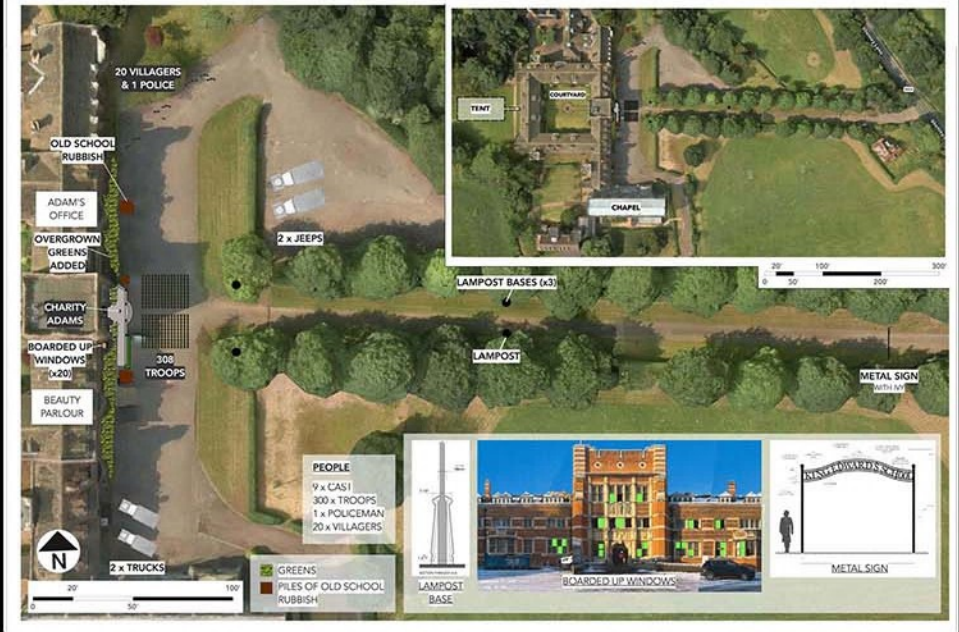


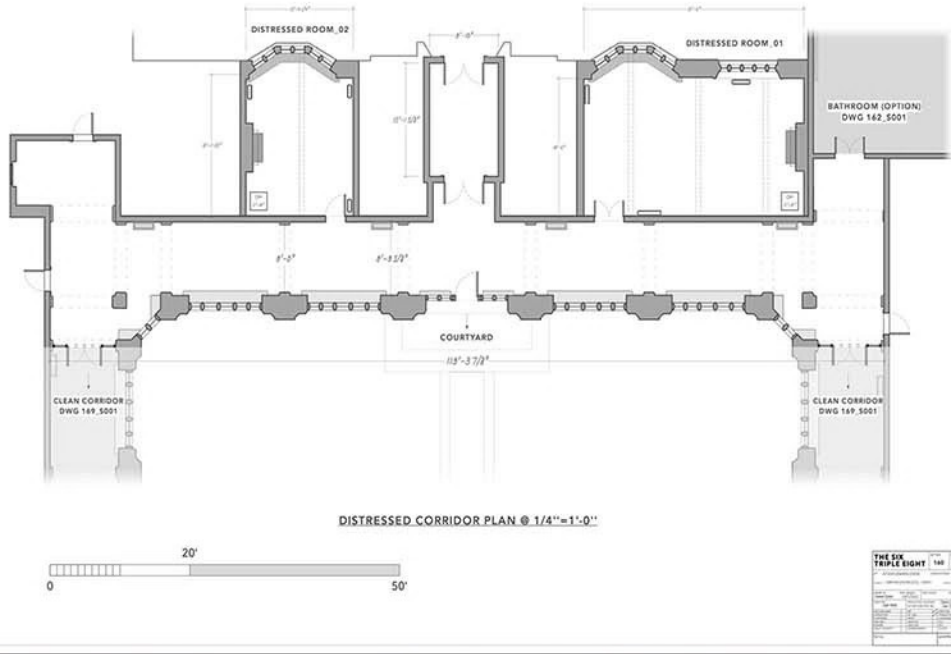
SET #155 STREETS OF BIRMINGHAM, ENGLAND

THE SIX TRIPLE EIGHT | FYC



'6888' SET: EXT KING EDWARD SCHOOL - DRESSING PLAN - 'DISTRESSED' V1 - 09/01/2023 159_DP01





KING EDWARDS SCHOOL CONDITION AT WAC 'S ARRIVAL





KING EDWARDS SCHOOL CONDITION AFTER THE WAC WORKS TO CLEAN UP



SET # 169 INT. KING EDWARDS SCHOOL- HALL (CLEANED)

THE SIX TRIPLE EIGHT | FYC



SET #108_153_158 I/E. DUXFORD AIR BASE- HANGARS

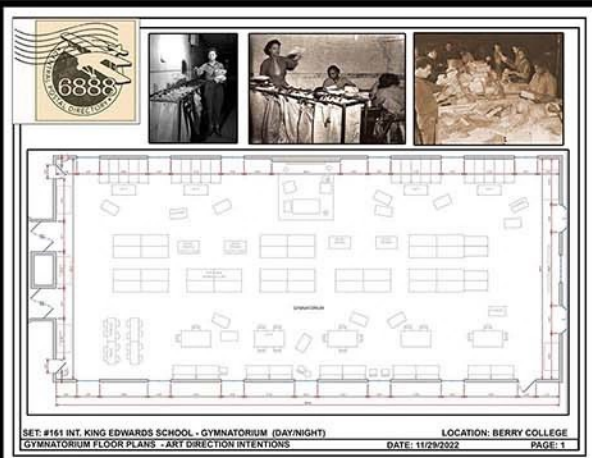
THE SIX TRIPLE EIGHT | FYC





SET #108_153_158 I/E. DUXFORD AIR BASE- HANGARS

THE SIX TRIPLE EIGHT | FYC





SET # 161 INT. KING EDWARDS SCHOOL- MAIL ROOM

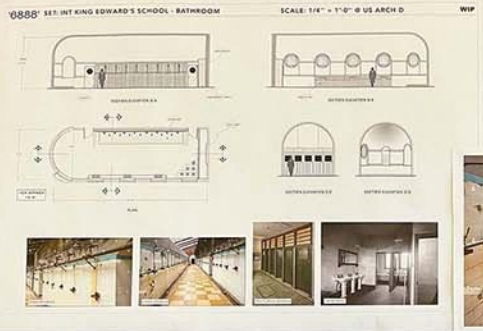
THE SIX TRIPLE EIGHT | FYC



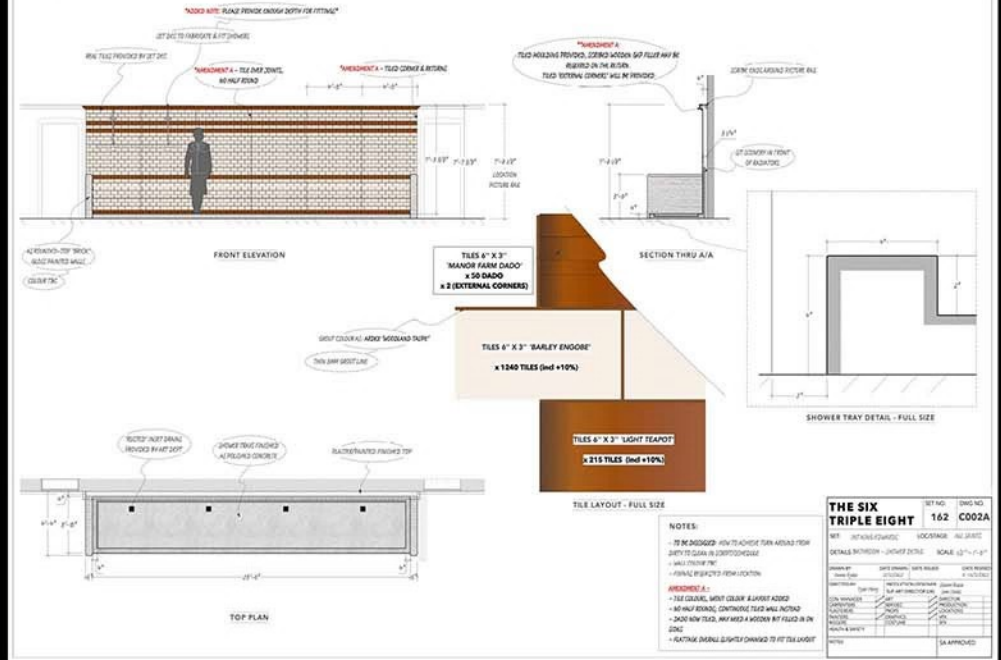
SET # 161 INT. KING EDWARDS SCHOOL- MAIL ROOM

THE SIX TRIPLE EIGHT | FYC

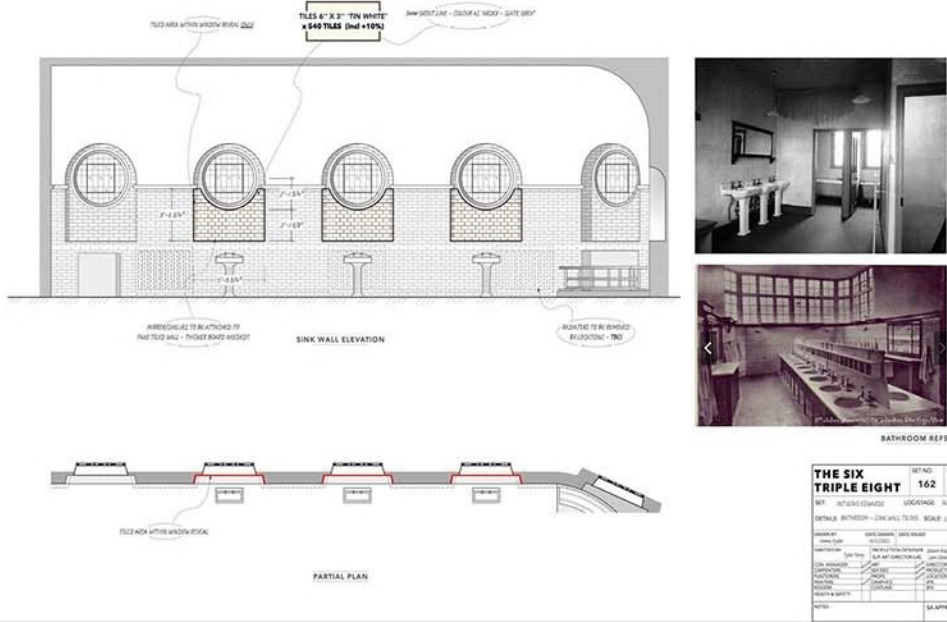
BATHROOM - KING EDWARD'S SCHOOL



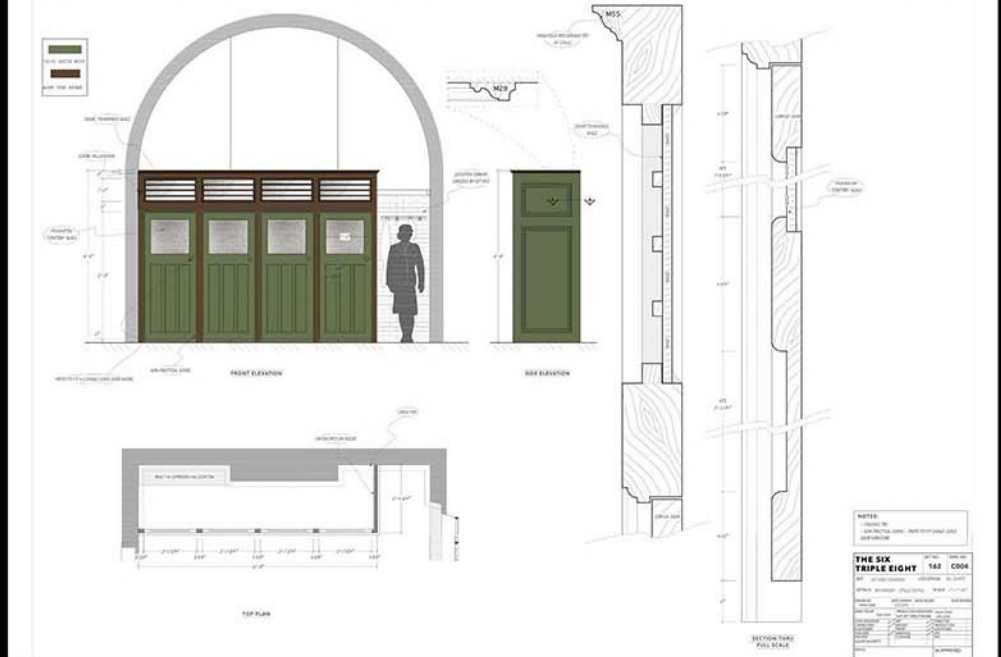
'6888' SET: INT KING EDWARD'S SCHOOL - BATHROOM - SHOWER DETAIL SCALE: 1/2" = 1'-0" @ US ARCH D 162_C002A



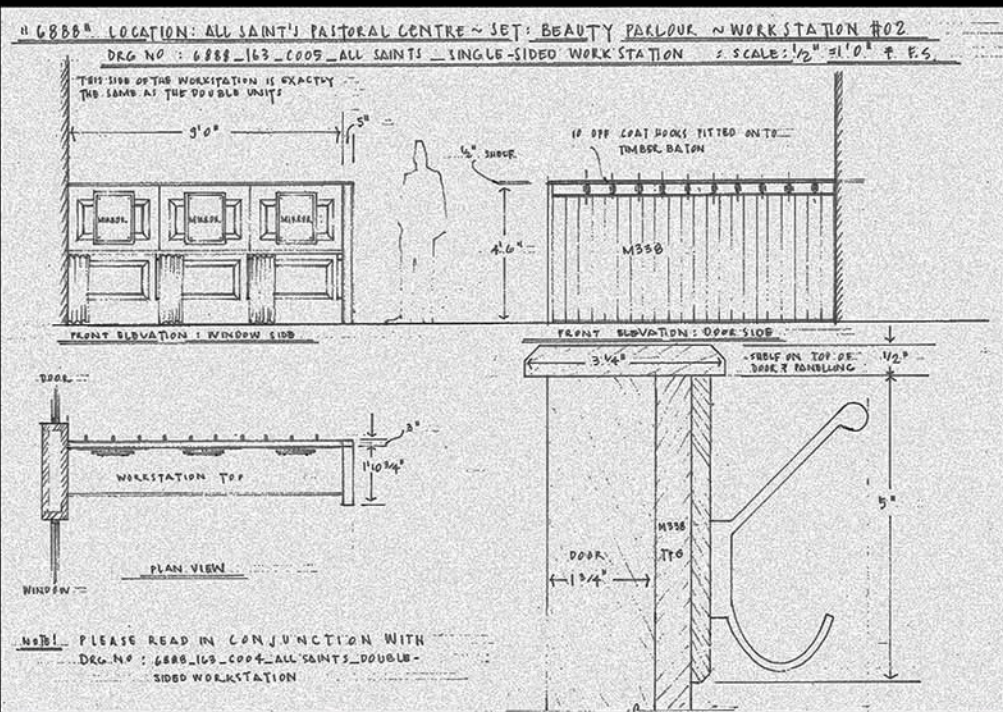
'6888' SET: INT KING EDWARD'S SCHOOL - BATHROOM TILING SCALE: 1/2" = 1'-0" @ US ARCH D 162_C006



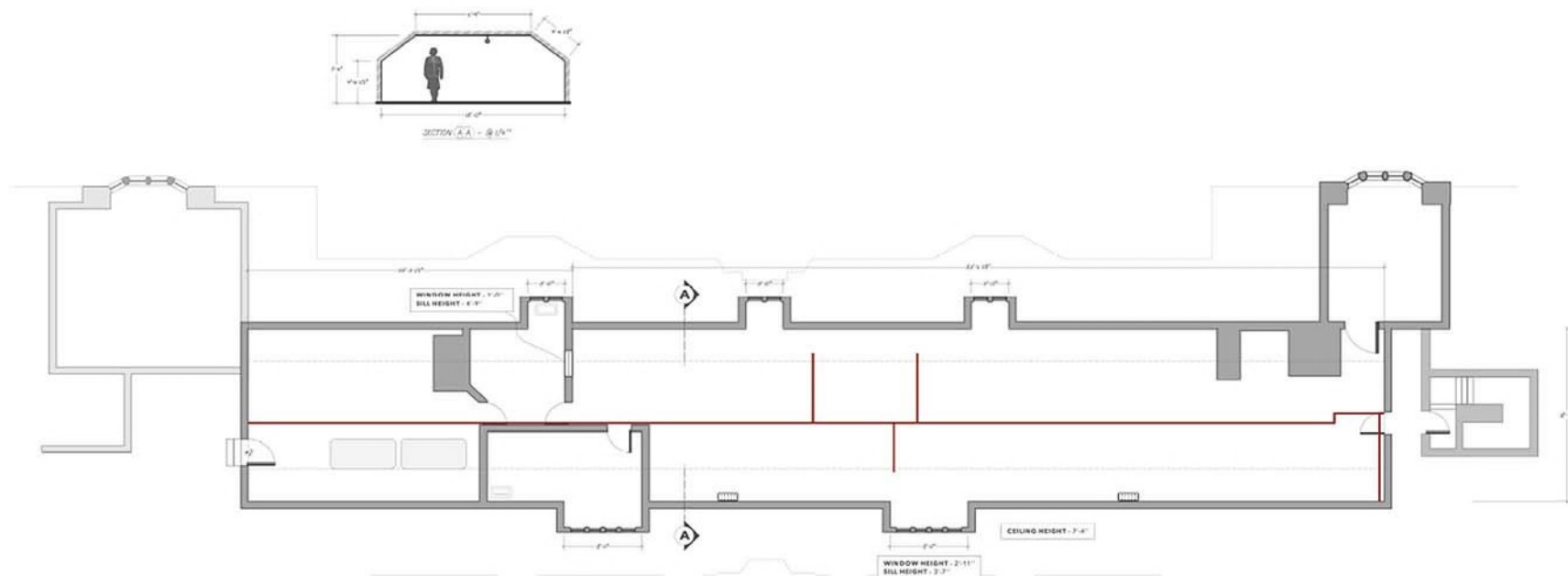
'6888' SET: INT KING EDWARD'S SCHOOL - BATHROOM - STALLS DETAIL SCALE: 1" = 1'-0" @ US ARCH E 162_C004











Fixed-23.98 FPS

∠180.0

ND Clear

2500 EI

4800 -20

BAT 13.8 V

Look FIX_legal cube

6K

3:2

1.8x

2500



SDI1/2
LOG

SDI3/4
Look

MON
s709

HDMI
s709

32
mm

9.2
ft

T2.7

11:13:09:10

B043C001

● Rec

X-OCN XT

| AXS A 44 min



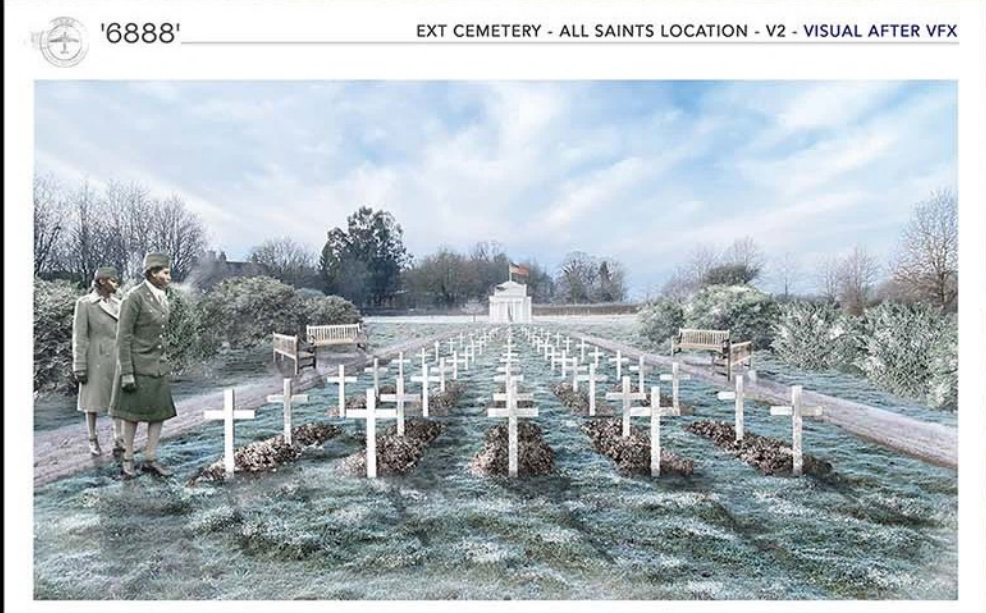
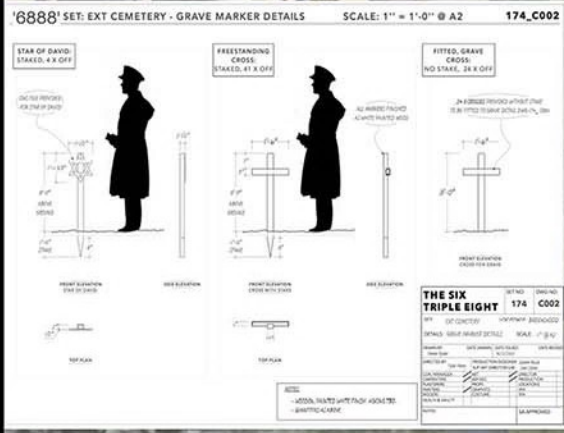
SET #166 KING EDWARDS SCHOOL- BOILER ROOM

THE SIX TRIPLE EIGHT | FYC



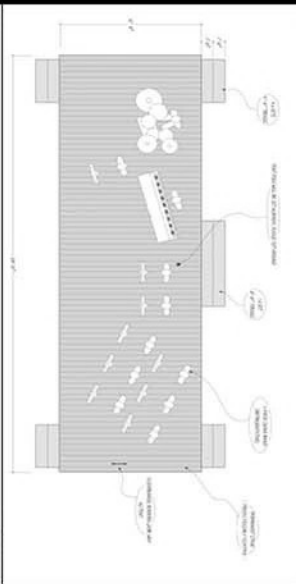
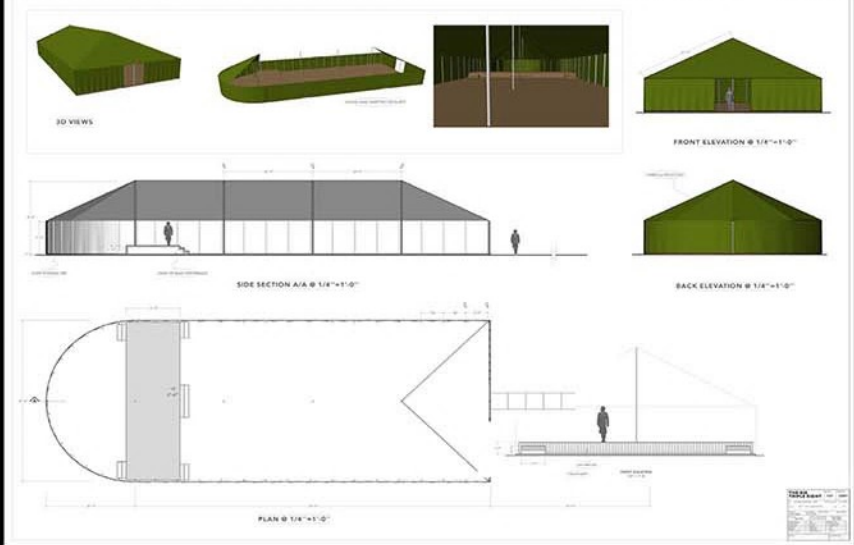
SET #171 INT. KING EDWARDS SCHOOL- BASEMENT

THE SIX TRIPLE EIGHT | FYC





'6888' SET: EXT KING EDWARD'S - TENT - PLAN & ELEVATIONS SCALE: 1/4" = 1'-0" @ US ARCH E 161_C001





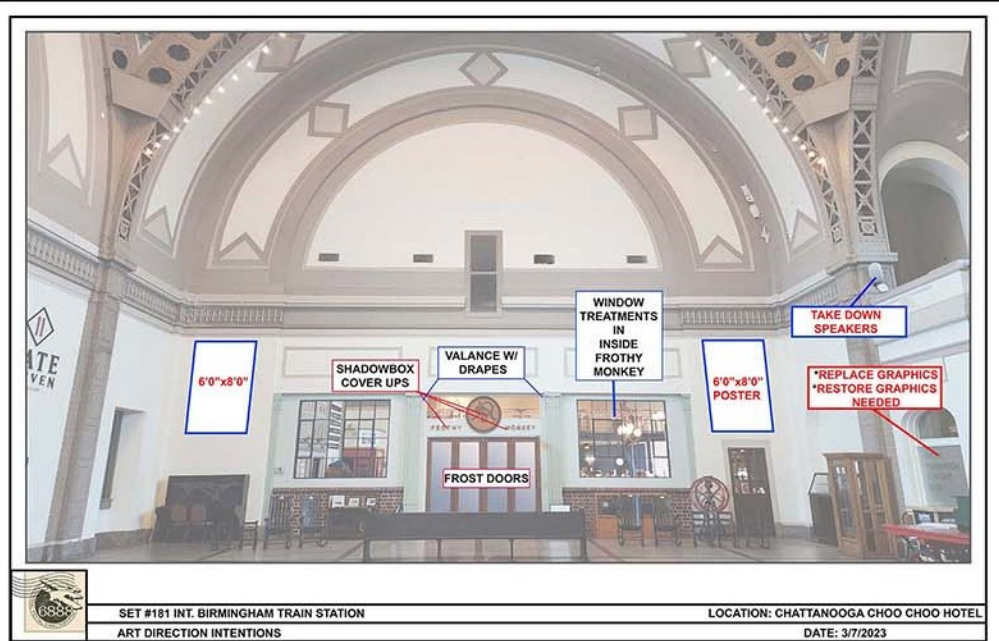
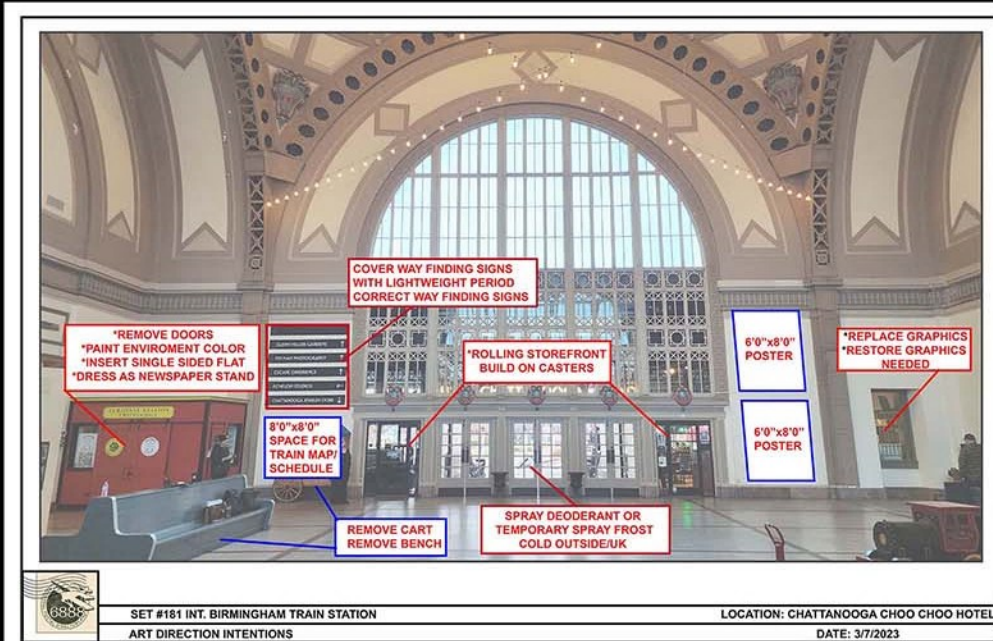
SET # 177 EXT. MILDRED'S COUNTRY HOME

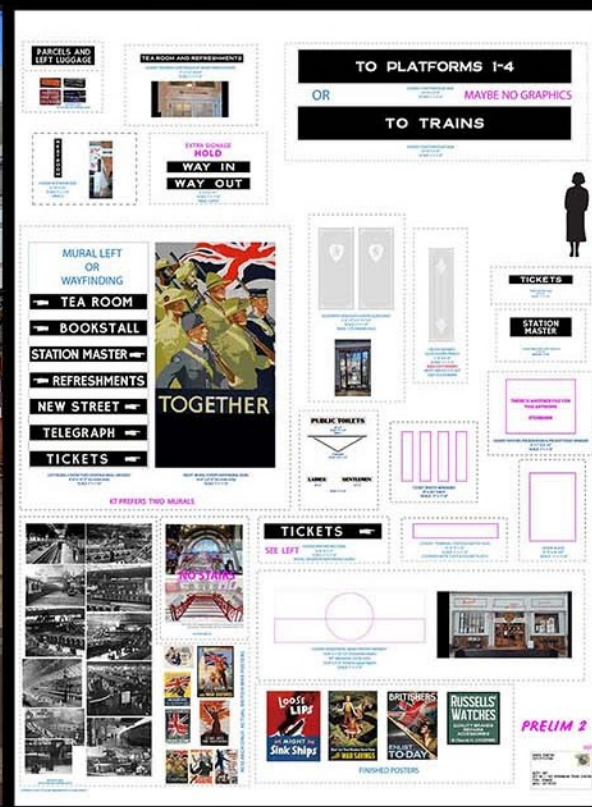
THE SIX TRIPLE EIGHT | FYC

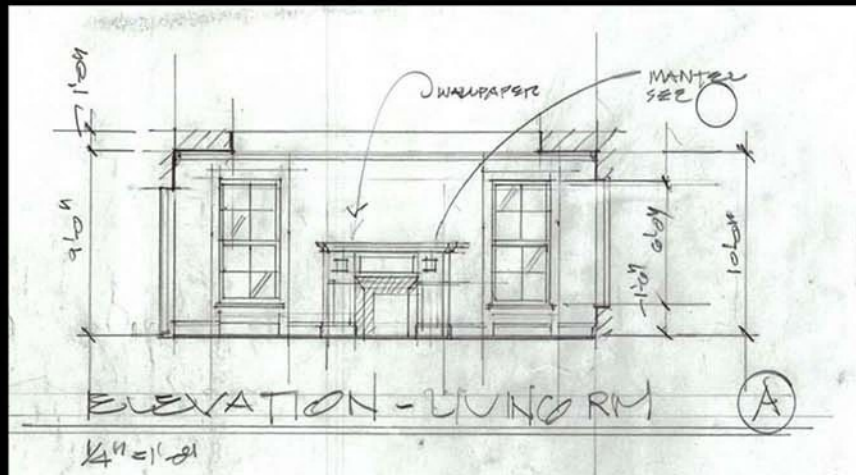


SET #180 WHITE HOUSE- ELEANOR'S SITTING ROOM

THE SIX TRIPLE EIGHT | FYC







SET #182 LENA DERRICOTT KING (PRESENT DAY HOME)

THE SIX TRIPLE EIGHT | FYC



CLEAN UP VEHICLE AND PAINT
HAND PAINT ALL GRAPHICS

LETTERING GOES ON BOTH SIDES OF VEHICLE COMPOSITE

13 1/4" x 12.5" (CAB DOORS)

20" DIAMETER (FOR HOOD)

U.S.A.
20594533
20 3/8" x 6" (LETTERING 2 1/4" TALL)
(HOOD SIDES)

BEFORE PICTURES

SCALE 3" = 1'-0"

RESEARCH ONLY - PHOTOS WILL NOT APPEAR ON SET

NOT TO SCALE

PMS 5064



RESEARCH ONLY - PHOTOS WILL NOT APPEAR ON SET

Sweetie's Bakery

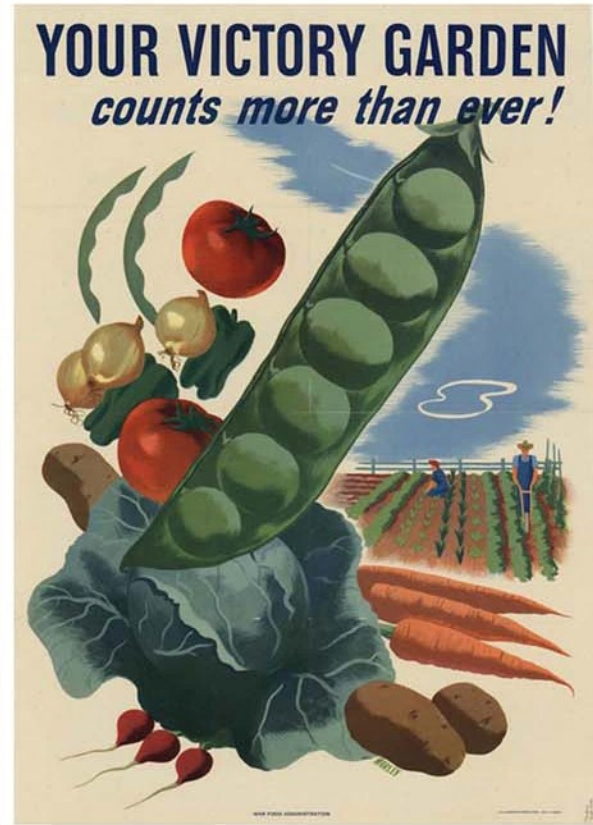
NOT TO SCALE

PMS 5064





Don't Let That Shadow Touch Them
with **WAR SAVINGS**



Cheap Tickets Daily!
ANY TRAIN
 after 10 am Week Days
 (except between 4:30 pm & 6:30 pm Monday to Friday inclusive)
 and All Day Sunday
 between
MANY UK STATIONS
 ASK FOR PARTICULARS HERE
SINGLE FARE FOR RETURN JOURNEY!



LEAD GRAPHIC DESIGNER- KAREN TENEYCK

THE SIX TRIPLE EIGHT | FYC



THANK YOU FOR YOUR CONSIDERATION

THE SIX TRIPLE EIGHT | FYC





THANK YOU FOR YOUR CONSIDERATION

THE SIX TRIPLE EIGHT | FYC

K E R R Y W A S H I N G T O N

THEY WERE ORDERED TO PROVIDE HOPE...

BASED ON THE HEROIC TRUE STORY
THE SIX TRIPLE EIGHT
A FILM BY TYLER PERRY

NETFLIX FILM PRESENTS A NETFLIX ORIGINAL FILM "THE SIX TRIPLE EIGHT" BASED ON THE TRUE STORY OF THE 6888 CENTRAL Postal Directory Company. CASTING BY JESSICA WATSON. COSTUME DESIGNER: JESSICA WATSON. HAIR AND MAKEUP: JESSICA WATSON. PRODUCTION DESIGNER: JESSICA WATSON. EXECUTIVE PRODUCERS: JESSICA WATSON, TYLER PERRY. PRODUCED BY JESSICA WATSON. WRITTEN BY JESSICA WATSON. DIRECTED BY TYLER PERRY. NETFLIX FILM PRESENTS A NETFLIX ORIGINAL FILM "THE SIX TRIPLE EIGHT" BASED ON THE TRUE STORY OF THE 6888 CENTRAL Postal Directory Company. CASTING BY JESSICA WATSON. COSTUME DESIGNER: JESSICA WATSON. HAIR AND MAKEUP: JESSICA WATSON. PRODUCTION DESIGNER: JESSICA WATSON. EXECUTIVE PRODUCERS: JESSICA WATSON, TYLER PERRY. PRODUCED BY JESSICA WATSON. WRITTEN BY JESSICA WATSON. DIRECTED BY TYLER PERRY.



ONLY ON **NETFLIX** | DECEMBER 20



THANK YOU FOR YOUR CONSIDERATION

THE SIX TRIPLE EIGHT | FYC