

# REZ BALL



PRODUCTION DESIGNER  
**RICHARD TOYON**

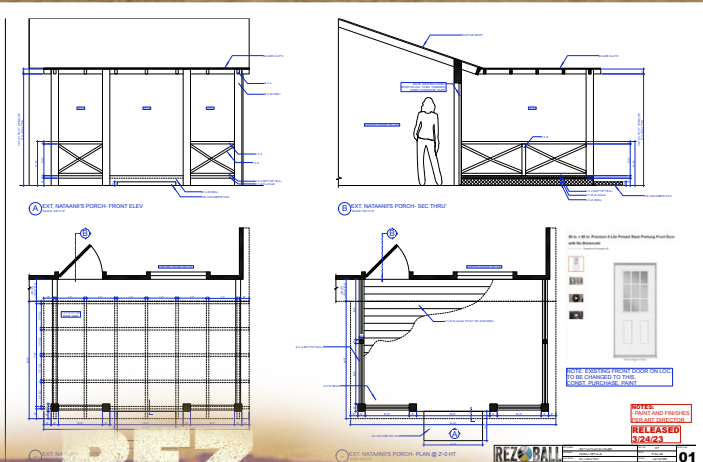
ART DIRECTOR  
**JACKIE GLYNN**

SET DECORATOR  
**BRANDI KALISH**

SET DESIGNER  
**ARGYA SADAN**

GRAPHIC ARTIST  
**DYLAN J. HAY-CHAPMAN**

**NETFLIX**



REZ BALL

NETFLIX



**REZ  
BALL**

**NETFLIX**

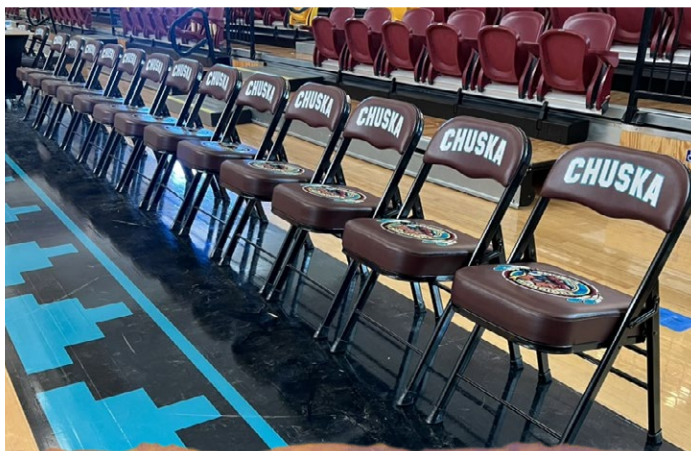
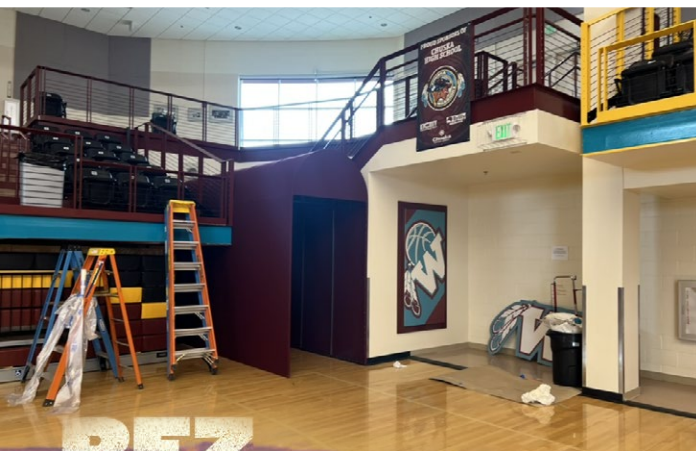




**REZ  
BALL**

**NETFLIX**





REZ  
BALL

NETFLIX

1997  
2001 2002 2008

CHAMPIONS  
1986 1993 1999  
2005 2012

GIRLS STATE CHAMPIONS  
1994 1999 2003  
2022

CROSS-COUNTRY BOYS STATE CHAMPIONS  
1987 1995 2009  
2010

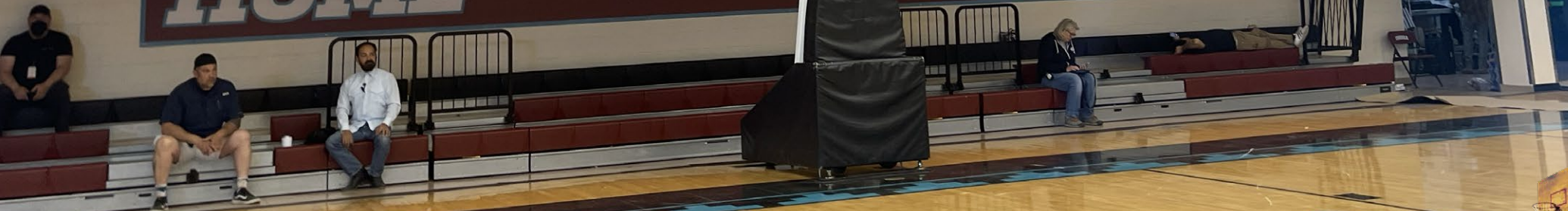
TENNIS GIRLS STATE CHAMPIONS  
1991 2002 2008

TRACK BOYS STATE CHAMPIONS  
1964 1972 1978  
1989 1992 1996  
2019

HOME	88	88	VISITOR	88	88
BONUS			BONUS		
TIMEOUTS			TIMEOUTS		
LEFT FOULS	88		LEFT FOULS	88	
		POSS PERIOD			
		PLAYER FOULS			

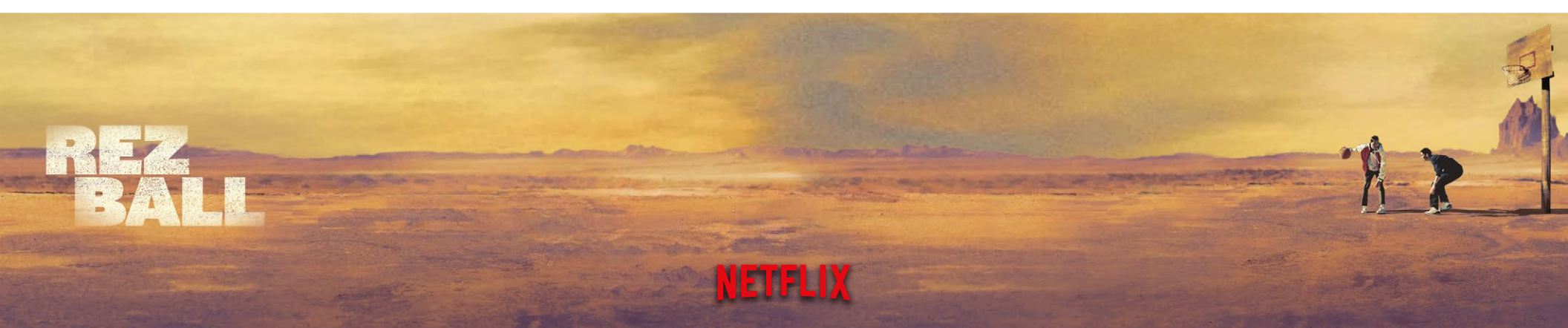


HOME OF THE WARRIORS



REZ BALL

NETFLIX





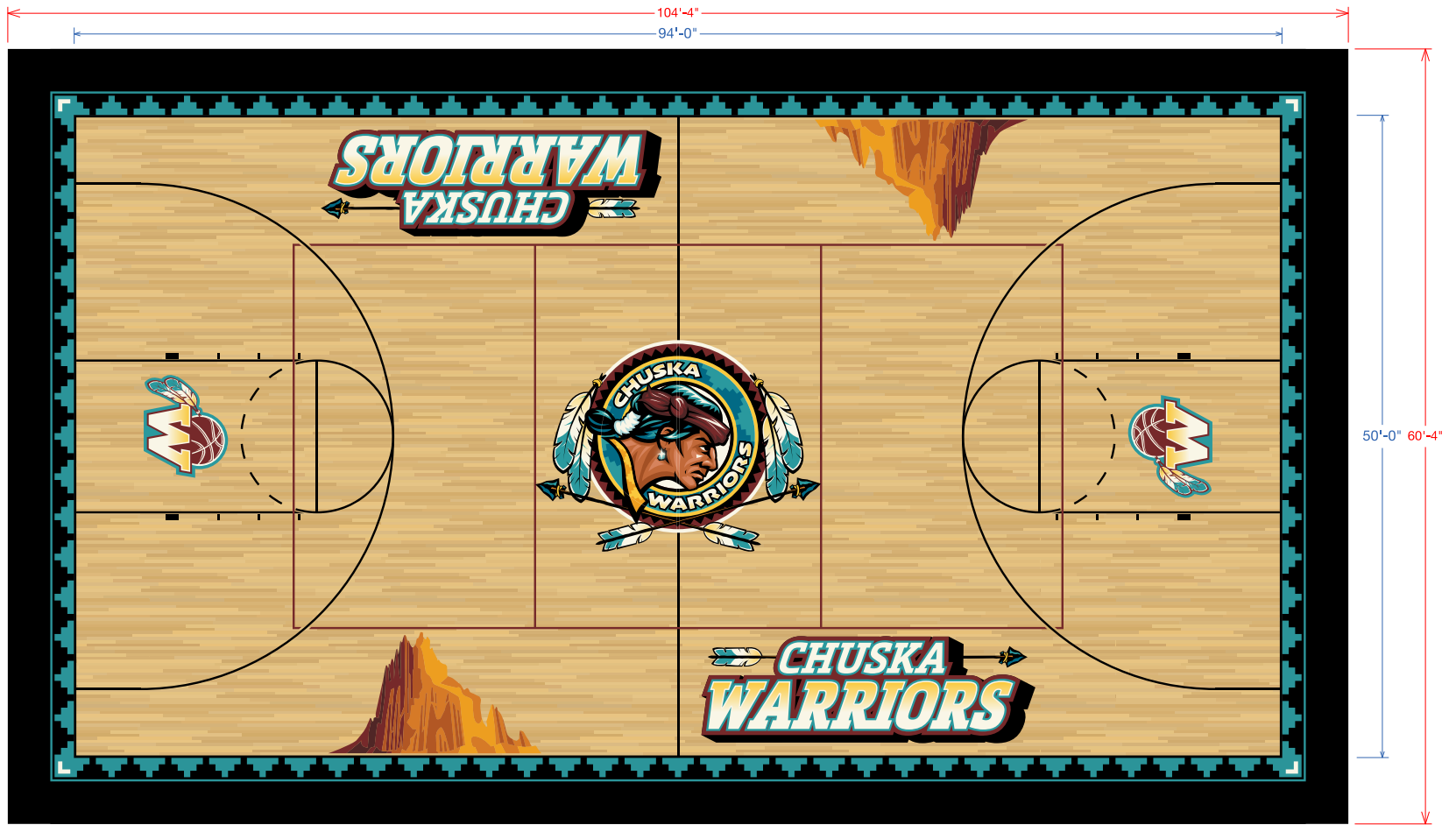
REZ  
BALL

NETFLIX

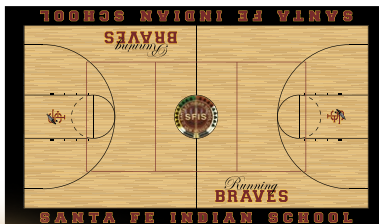


# CHUSKA H.S. COURT FLOOR

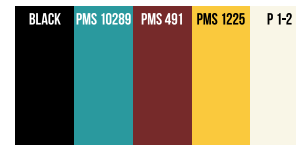
1/4" = 1'-0"



## EXISTING CONDITION



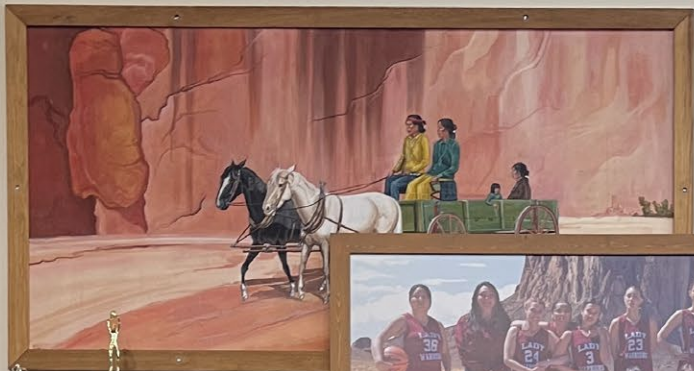
## NEW GRAPHICS



# REZ BALL

# NETFLIX





GIRLS VARSITY BASKETBALL 2003-2004  
CLASS 4A STATE CHAMPIONS



REZ  
BALL

NETFLIX

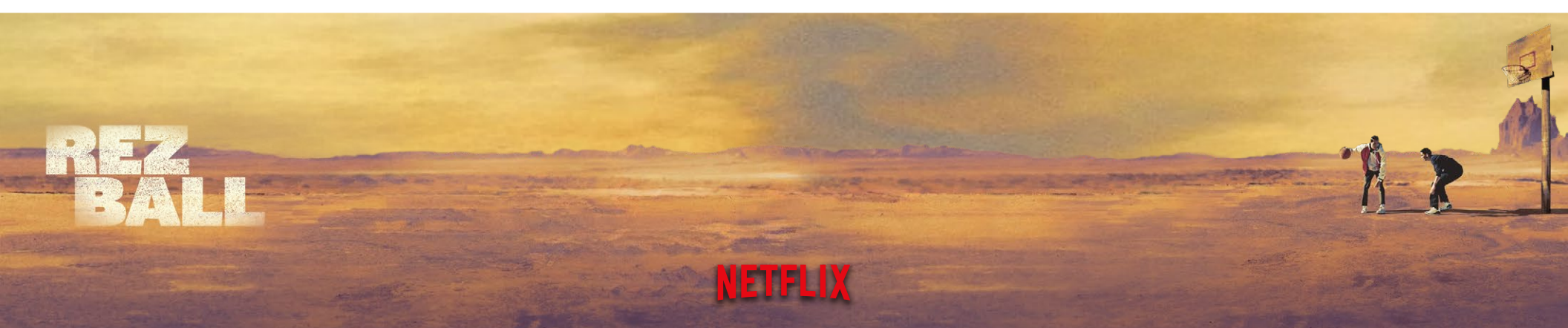




REZ  
BALL



NETFLIX





# REZ BALL

NETFLIX

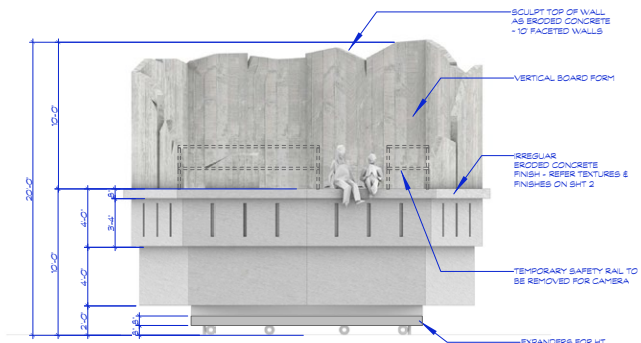




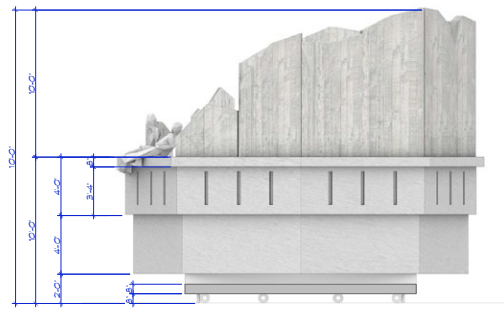
**REZ  
BALL**

**NETFLIX**

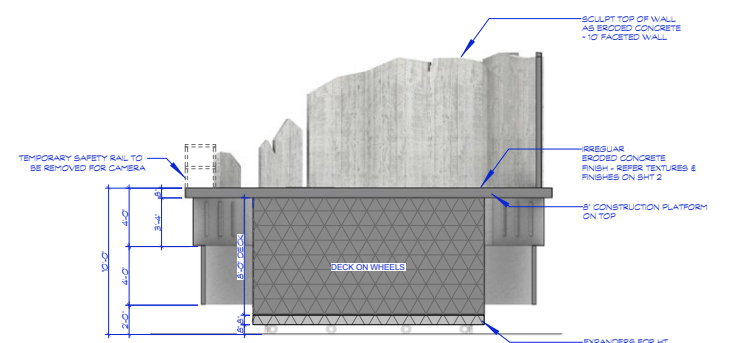




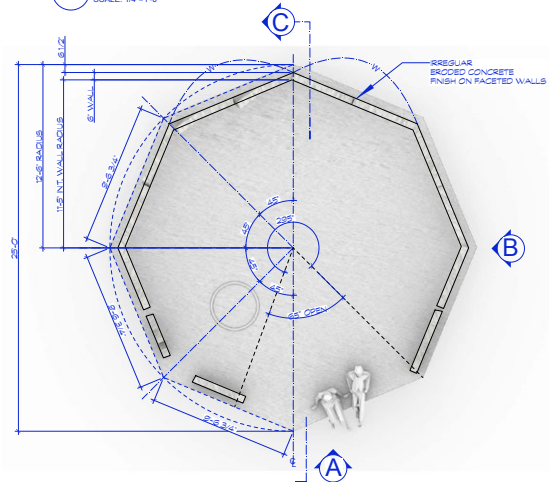
**A** EXT. WATER CISTERN FRONT ELEV  
SCALE: 1/4"=1'-0"



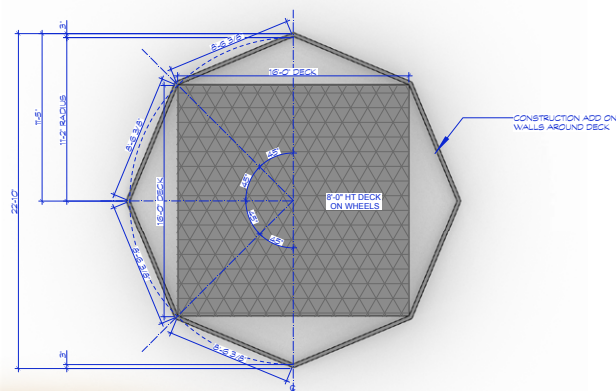
**B** EXT. WATER CISTERN SIDE ELEV  
SCALE: 1/4"=1'-0"



**C** EXT. WATER CISTERN SEC THRU'  
SCALE: 1/4"=1'-0"



**D** EXT. WATER CISTERN TOP VIEW  
SCALE: 1/4"=1'-0"



EXT. WATER CISTERN - PLAN @ DECK LEVEL  
SCALE: 1/4"=1'-0"



**E** EXT. WATER CISTERN MODEL/ BACKING VIEW  
NTS



**NOTES:**  
- PAINT, TEXTURES AND FINISHES PER ART DIRECTOR  
- BUILD TEMPORARY SAFETY RAIL - TO BE REMOVED FOR CAMERA  
- CISTERN TO BE ON DECK W/ WHEELS

**RELEASE**  
**4/26/23**

<b>REZBALL</b> PRODUCTION DESIGNER: RICHARD KOTTON ART DIRECTOR: JACKIE GUYEN	SET NAME: EXT. WATER CISTERN	SET NO: 112
	DRAWING: CONCEPT VIEWS, PLAN & ELEVS	DATE: 4/26/23
	LOCATION: STAGE 7	SCALE: AS NOTED
	DRAWN BY: ARGYA	VERSION/RELEASE: 1

**REZ  
BALL**

**NETFLIX**





**REZ  
BALL**

**NETFLIX**





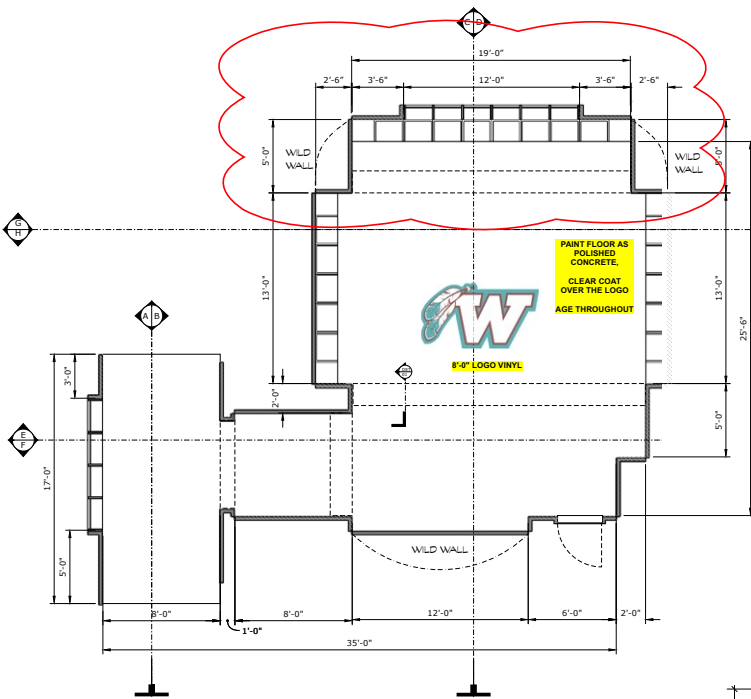


**REZ  
BALL**

**NETFLIX**



# INT CHUSKA LOCKER ROOM PAINT PLAN

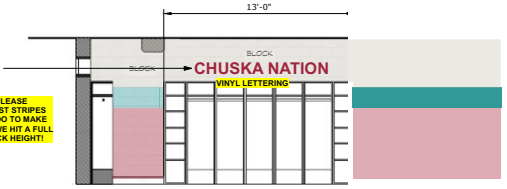
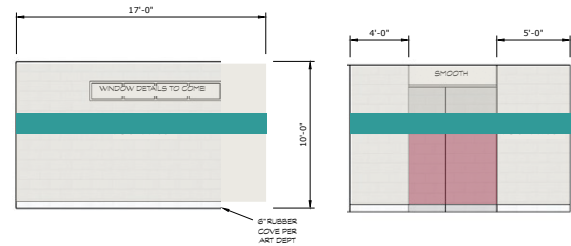


PLAN VIEW  
SCALE: 1/4" = 1'-0"

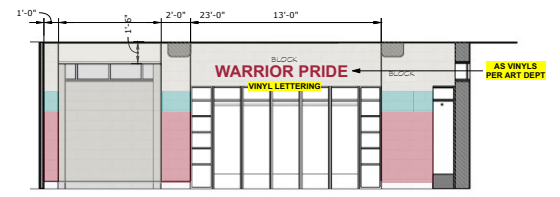
**COLOR GUIDE**

- HC-172 REVERE PEWTER - SEMIGLOSS
- 2080-10 RASPBERRY TRUFFLE - SEMIGLOSS
- 733 PALM COAST TEAL - SEMIGLOSS
- OC-52 GRAY OWL - SEMIGLOSS

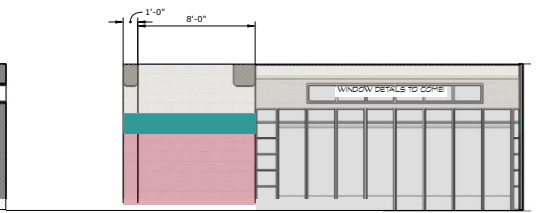
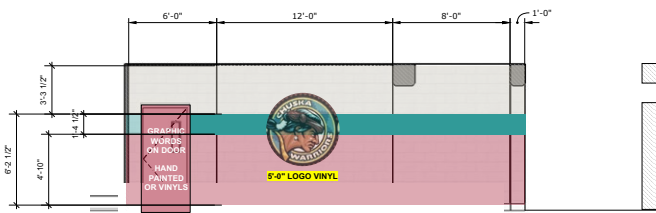
PLEASE ADJUST STRIPE TO HIT A FULL BLOCK HEIGHT!



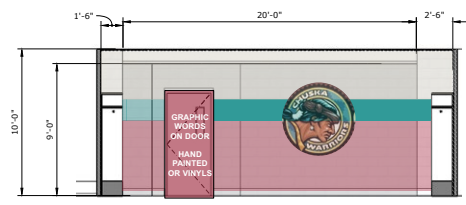
D ELEVATION D  
SCALE: 1/4" = 1'-0"



E ELEVATION E  
SCALE: 1/4" = 1'-0"



G ELEVATION G  
SCALE: 1/4" = 1'-0"



DOOR GRAPHIC TO BE DESIGNED BY DYLAN INSPIRATION BELOW:



REVISED 3/16/23

<b>REZBALL</b>		SET NAME: CHUSKA LOCKER ROOM	DRAWING: PRELIM PLAN & ELEVATIONS
		SET #: 123	STAGE #: 6
		DATE: 3/16/23	SCALE: AS NOTED
PD: RICH TOYON	AD: JACKIE GYNN	CONST: BILL HOLMQUIST	
DIR: SYDNEY FREELAND	PROD: NETFLIX / THE SPRINGHILL COMPANY / WISE ENTERTAINMENT		

RELEASED 4/2





# REZ BALL

NETFLIX





**REZ  
BALL**

**NETFLIX**



# REZ BALL

NETFLIX



**REZ  
BALL**

**NETFLIX**





**REZ  
BALL**

**NETFLIX**





# REZ BALL

NETFLIX



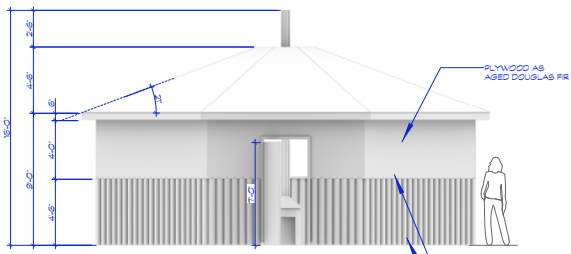




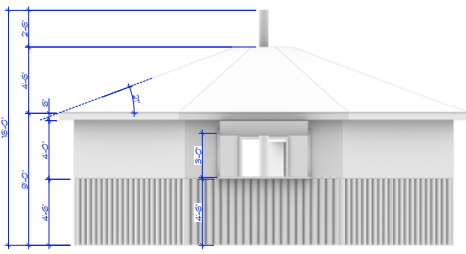
**REZ  
BALL**

**NETFLIX**

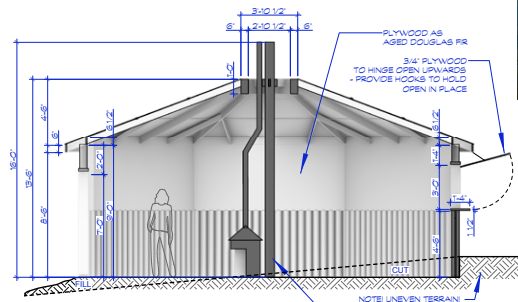




**A** EXT. HOGAN ELEV  
SCALE: 1/4"=1'-0"



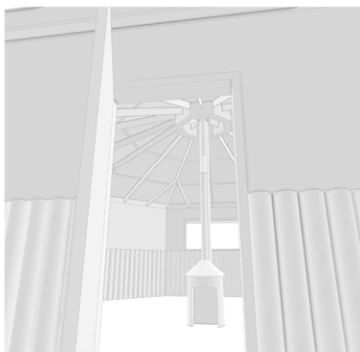
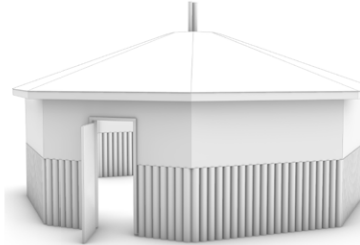
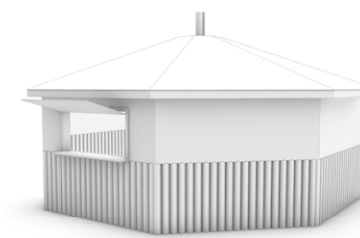
**B** EXT. HOGAN ELEV  
SCALE: 1/4"=1'-0"



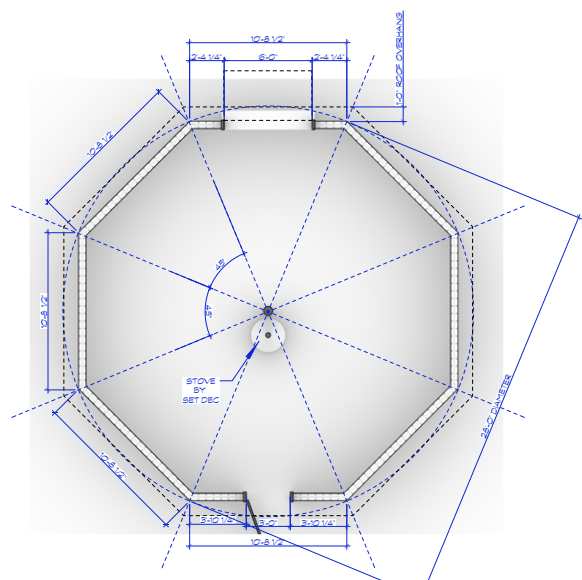
**C** SEC THRU' HOGAN  
SCALE: 1/4"=1'-0"



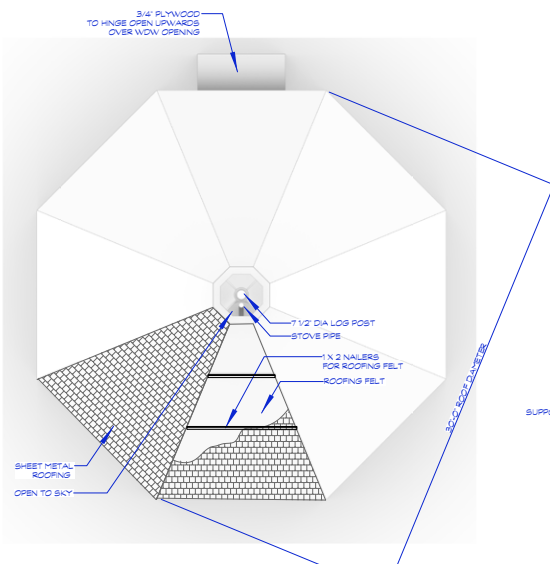
**EXT. HOGAN REF**  
NTS



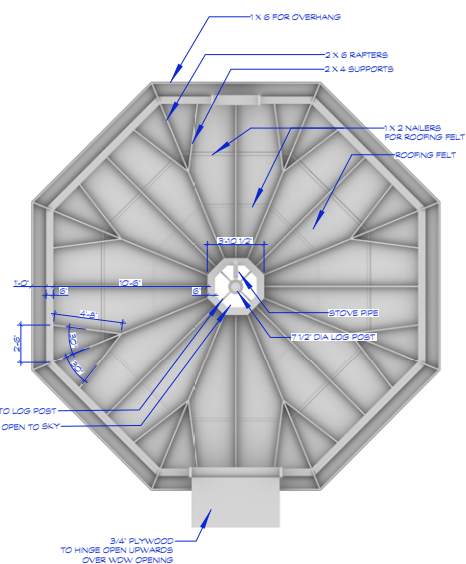
**EXT. HOGAN MODEL VIEWS**  
NTS



**EXT. HOGAN PLAN**  
SCALE: 1/4"=1'-0"



**EXT. HOGAN TOP VIEW**  
SCALE: 1/4"=1'-0"



**EXT. HOGAN RCP**  
SCALE: 1/4"=1'-0"

**NOTES:**  
 - TO BE BUILT AND TRANSPORTED TO LOC.  
 - LEVEL LAND AT LOCATION FOR HOGAN  
 - DOOR TO FACE EAST ON LOCATION  
 - PAINT AND FINISHES PER ART DIRECTOR

**RELEASED**  
**4/11/23**

<b>REZBALL</b>	SET NAME: EXT. HOGAN	SET NO: 150
	DRAWING: CONCEPT VIEWS, PLAN & ELEV'S	DATE: 4/7/23
	LOCATION: ZIA PUEBLO	SCALE: AS NOTED
PRODUCTION DESIGNER: RICHARD TAYLOR	DRAWN BY: ARGYA	VERSION RELEASE: 1
ART DIRECTOR: JACKIE GUYEN		

**REZBALL**

**NETFLIX**





**REZ  
BALL**

**NETFLIX**





**REZ  
BALL**

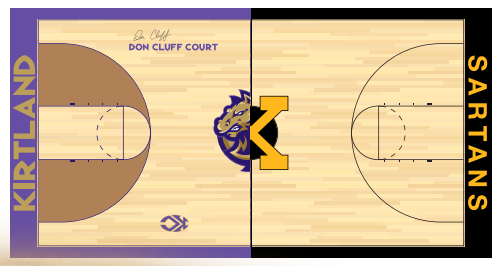
**NETFLIX**





**REZ  
BALL**

**NETFLIX**



REZ  
BALL

NETFLIX





**REZ  
BALL**



**NETFLIX**



REZ  
BALL

NETFLIX





**REZ  
BALL**

**NETFLIX**



# SNOW WATERS



REZ  
BALL

NETFLIX





**REZ  
BALL**

**NETFLIX**



**REZ  
BALL**

**NETFLIX**





**REZ  
BALL**

**NETFLIX**





# REZ BALL

NETFLIX





**REZ  
BALL**

**NETFLIX**





**REZ  
BALL**

**NETFLIX**





**TUTORS AVAILABLE**  
FREE TUTORING IS AVAILABLE TO EVERY SUBJECT!  
EVEN DAY THROUGH FRIDAY AND WANT TO TRY ON WEEKENDS!  
FROM 4PM TO 7PM MONDAY  
PLEASE REGISTER WITH THE LIBRARIAN WILL BE TURNED AROUND BUT IF WE CAN'T THEN MAKE SURE WE HAVE ENOUGH VOLUNTEER TUTORS ON HAND TO MAKE SURE EACH STUDENT GETS THE ATTENTION HE OR SHE NEEDS.

**YOUTH BOXING AFTER SCHOOL PROGRAM**  
CENTRAL CONSOLIDATED SCHOOL DISTRICT  
YOU WILL RECEIVE A SNACK AND HAVE ONE FREE TO ANY KIDS ENROLLED IN PROGRAMS FOR THROUGHOUT THE YEAR. MAKE SURE THEY WILL LEARN CONFIDENCE, STRATEGIES AND LITTLE SELF DEFENSE IN A POSITIVE ENVIRONMENT.

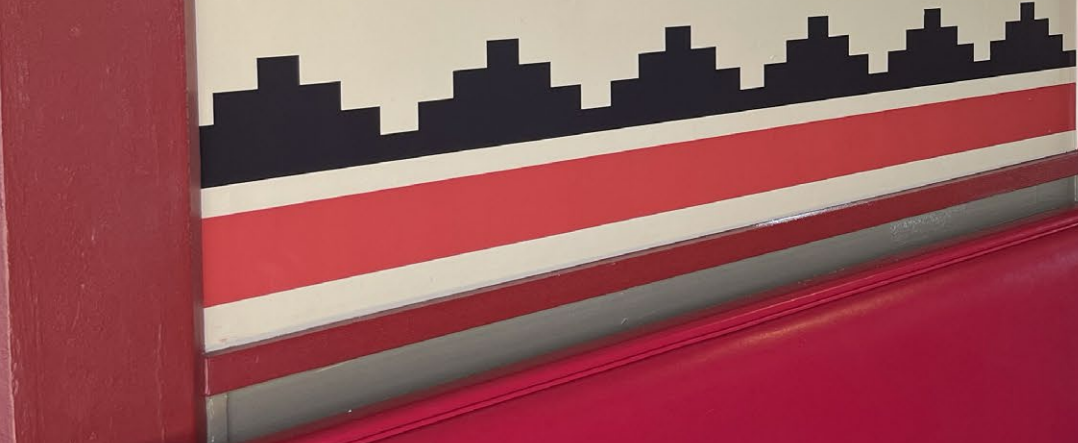
**ALL-STATE SWIM MEET!!**  
COME SUPPORT YOUR WARRIORS SWIM TEAM  
AS THEY TAKE ON: FEBRUARY 17 - 19, 2024  
AMESBORO, NJ  
PREGS WITH STUDENT ID

**Chuska HS Band Navajo Taco LUNCH**  
SPRING TRIP FUNDRAISER  
2024 - CHUSKA HIGH SCHOOL, Chuska, Navajo, and Gallup, NM

**SCIENCE CAMP**  
Interactive & Engaging Activities  
UNIVERSITY OF NEW MEXICO  
JUNE 16-22, 2024

**PANCAKE FEED**  
Sunday 8am to 11:30am  
\$1 per flapjack \$4 for the UNLIMITED FLAPJACK BELLYBUSTER PLATE!

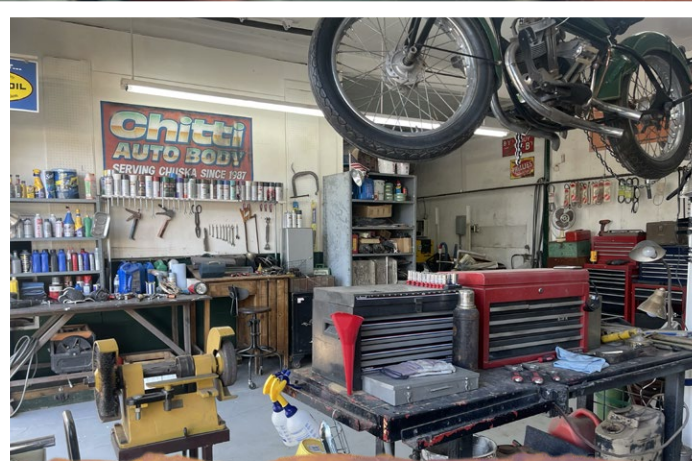
**HELP WANTED**  
PART TIME CLEANER  
Chicki KUTUBSOO



**REZ BALL**

**NETFLIX**

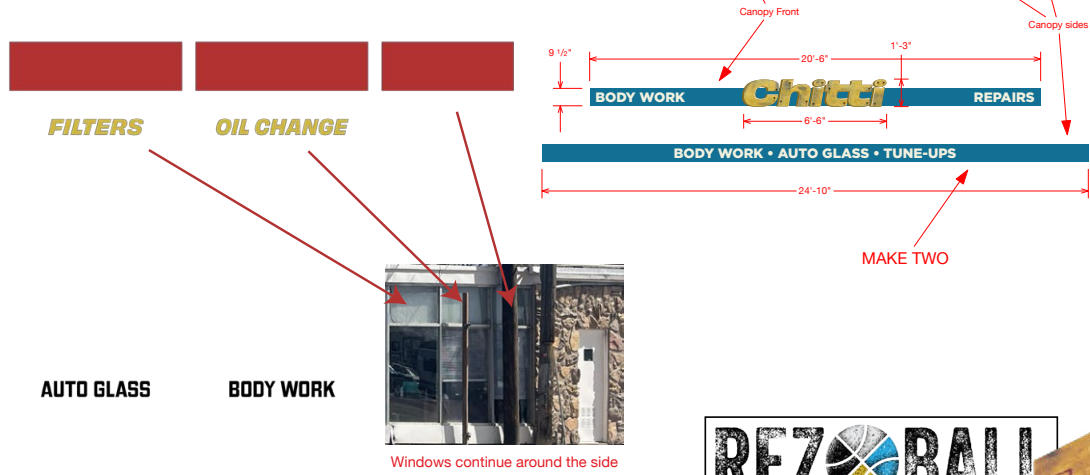




REZ  
BALL

NETFLIX

# CHITTI AUTO BODY



REZ BALL



NETFLIX



REZ  
BALL

NETFLIX



# REZ BALL

NETFLIX

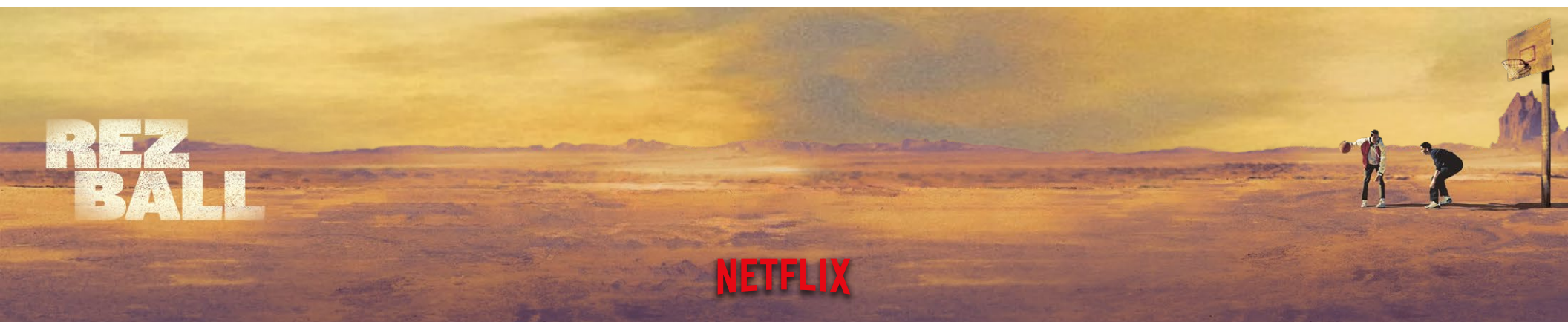




REZ  
BALL

NETFLIX









**REZ  
BALL**

**NETFLIX**



# REZ BALL

NETFLIX





**REZ  
BALL**

**NETFLIX**





**REZ  
BALL**

**NETFLIX**



**REZ  
BALL**

**NETFLIX**





**REZ  
BALL**

**NETFLIX**



# CHUSKA H.S. "WARRIORS" TEAM LOGO (ROUND VERSION) APPROVED



CENTER COURT VERSION  
(WITH ARROWS)

FONT IS "SKIA," AN APPLE SYSTEM FONT



FULL COLOR



FLAT COLOR



GRAYSCALE\*



SINGLE COLOR FLAT\*  
(LIGHT BG)



SINGLE COLOR FLAT\*  
(DARK BG)

\*NOTE: PLEASE CHECK WITH ART DEPARTMENT REGARDING POTENTIAL COLOR USAGE

BLACK	PMS 10289	PMS 491	SKIN TONES	PMS 1225	P 1-2
			D6835C		
			C1683A		
SHADING COLORS:	PMS 634	PMS 490	A24E1B	PMS 138	PMS 10289 40%

**REZBALL**

CHUSKA H.S. "WARRIORS" TEAM LOGO (ROUND VERSION) APPROVED

DIRECTOR: SYDNEY FREELAND      ART DIRECTOR: JACKIE OLYNN  
 PRODUCTION DESIGNER: RICHARD TOYON      GRAPHIC ARTIST: DYLAN HAY-CHAPMAN

REZ  
BALL

NETFLIX





# CHUSKA H.S. "WARRIORS" TEAM LOGO - NATURAL SKINTONES



DETAILED ILLUSTRATION



SIMPLIFIED VERSION



ANGULAR AND DYNAMIC

## REFERENCE



## FIRST DRAFT



ALTERNATE VERSIONS



BLACK	PMS 10289	PMS 491	PMS 5-1049 "ARTISAN'S GOLD"	PMS 1225	P 1-2
SHADING COLORS:	PMS 634	PMS 490	SKIN TONES PMS 7414	PMS 138	PMS 10289 40%

**REZ BALL**

CHUSKA H.S. "WARRIORS" TEAM LOGO

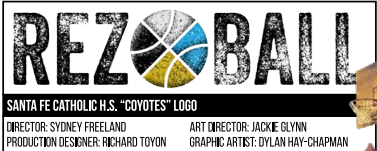
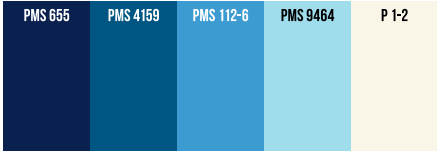
DIRECTOR: SYDNEY FREELAND      ART DIRECTOR: JACKIE GLYNN  
 PRODUCTION DESIGNER: RICHARD TOYON      GRAPHIC ARTIST: DYLAN HAY-CHAPMAN

**REZ BALL**

**NETFLIX**



# SANTA FE CATHOLIC H.S. "COYOTES" LOGO



REZ  
BALL



NETFLIX

# ABQ POLICE CRUISER



NO GRAPHICS FOR FRONT END



REZ  
BALL

NETFLIX



# NAVAJO POLICE SUV



NO GRAPHICS FOR FRONT END

<b>REZ BALL</b>	
NAVAJO POLICE SUV	
DIRECTOR: SYDNEY FREELAND	ART DIRECTOR: JACKIE GLYNN
PRODUCTION DESIGNER: RICHARD TOYON	GRAPHIC ARTIST: DYLAN HAY-CHAPMAN

# REZ BALL

# NETFLIX

