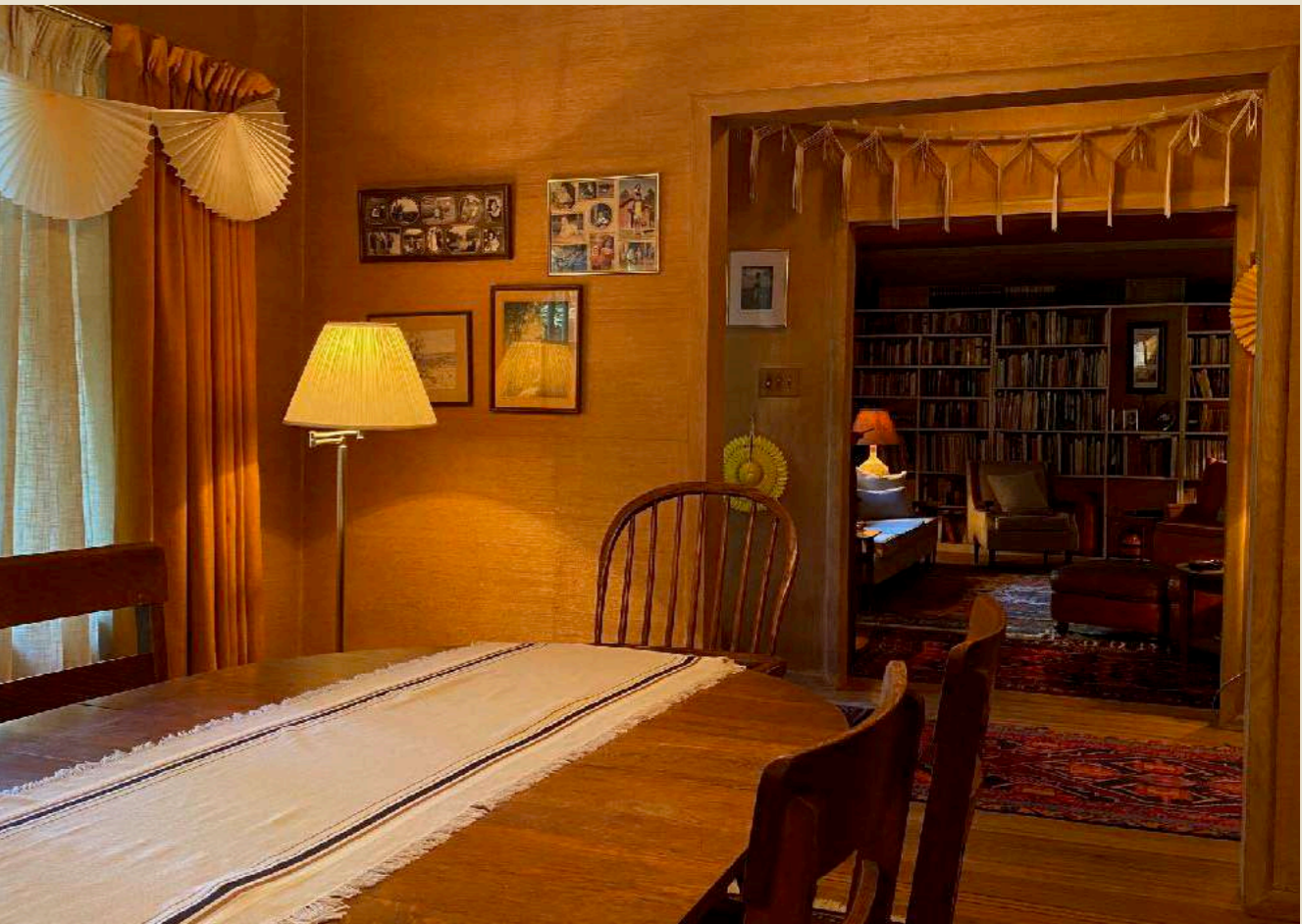


A movie poster for the film 'Eternity'. The background features a group of people, likely the main cast, dressed in 1950s-style clothing. In the foreground, a man in a dark suit and tie sits on the left, looking towards the right. Next to him, a woman in a pink and white striped dress sits with her hands clasped, looking directly at the camera with a concerned expression. To her right, a man in a blue and white striped shirt sits, looking towards the right. Behind them, several other people are visible, some in suits and others in casual shirts, all looking in various directions. The background is a bright blue sky with white clouds. The title 'Eternity' is written in large, bold, yellow serif font across the middle of the image. Below the title, the words 'PRODUCTION DESIGN' are written in a smaller, bold, yellow sans-serif font.

# Eternity

PRODUCTION DESIGN



INT JOAN & LARRY'S HOME

DRESSED SET PHOTOS



RENDER



INT JUNCTION - ATRIUM

SET BUILD



INT JUNCTION ATRIUM

CONCEPT ART



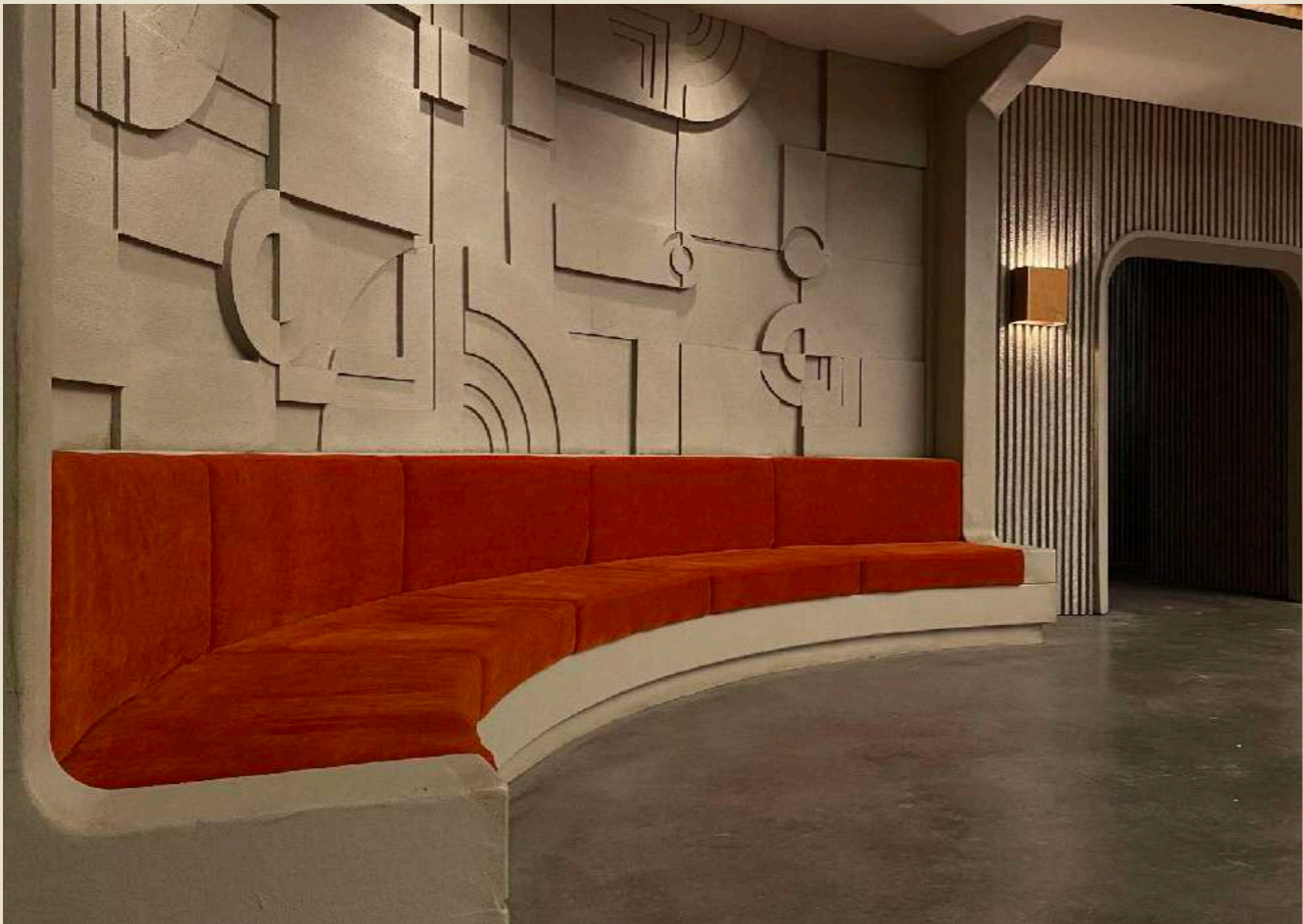
RENDER



INT JUNCTION ATRIUM



SET BUILD



INT JUNCTION ATRIUM

SET BUILD



DIRECTOR DAVID FREYNE



INT JUNCTION ATRIUM - HOTEL MEZZANINE

SET BUILD



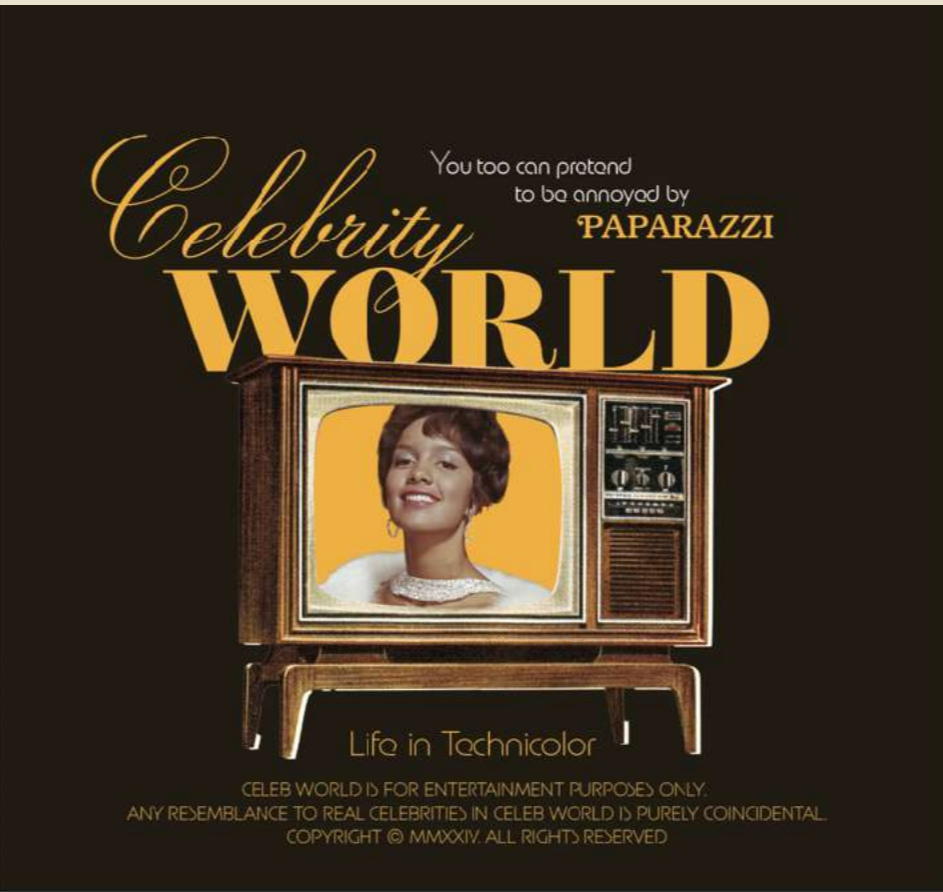
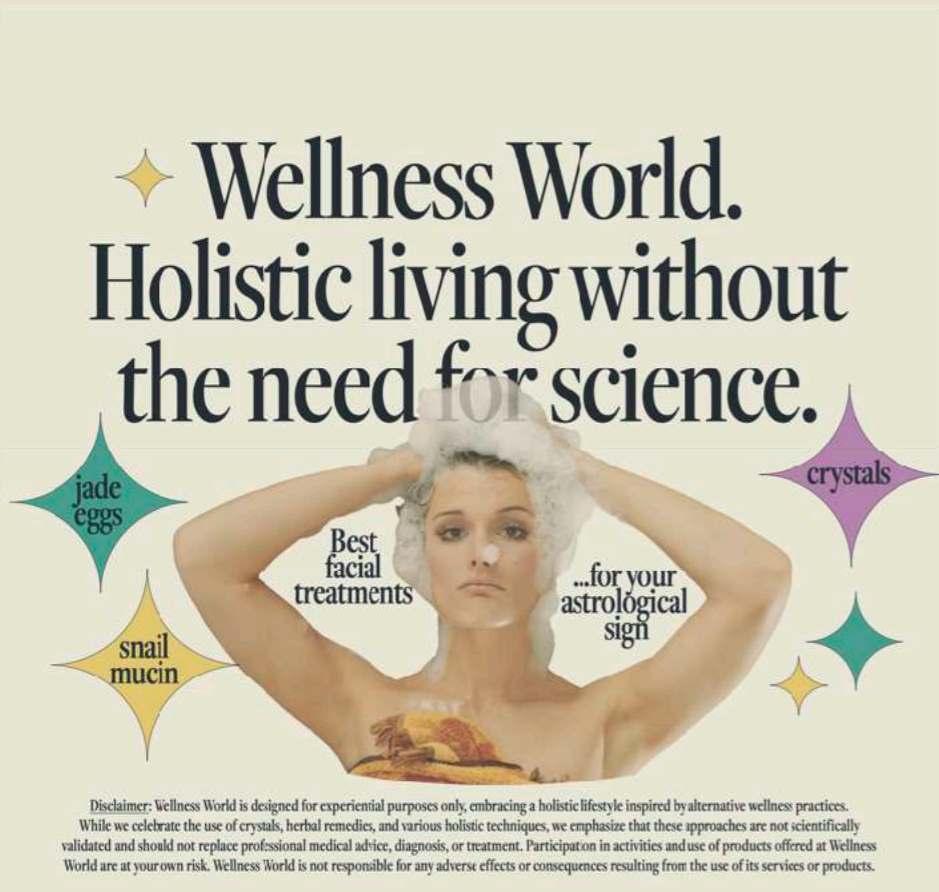
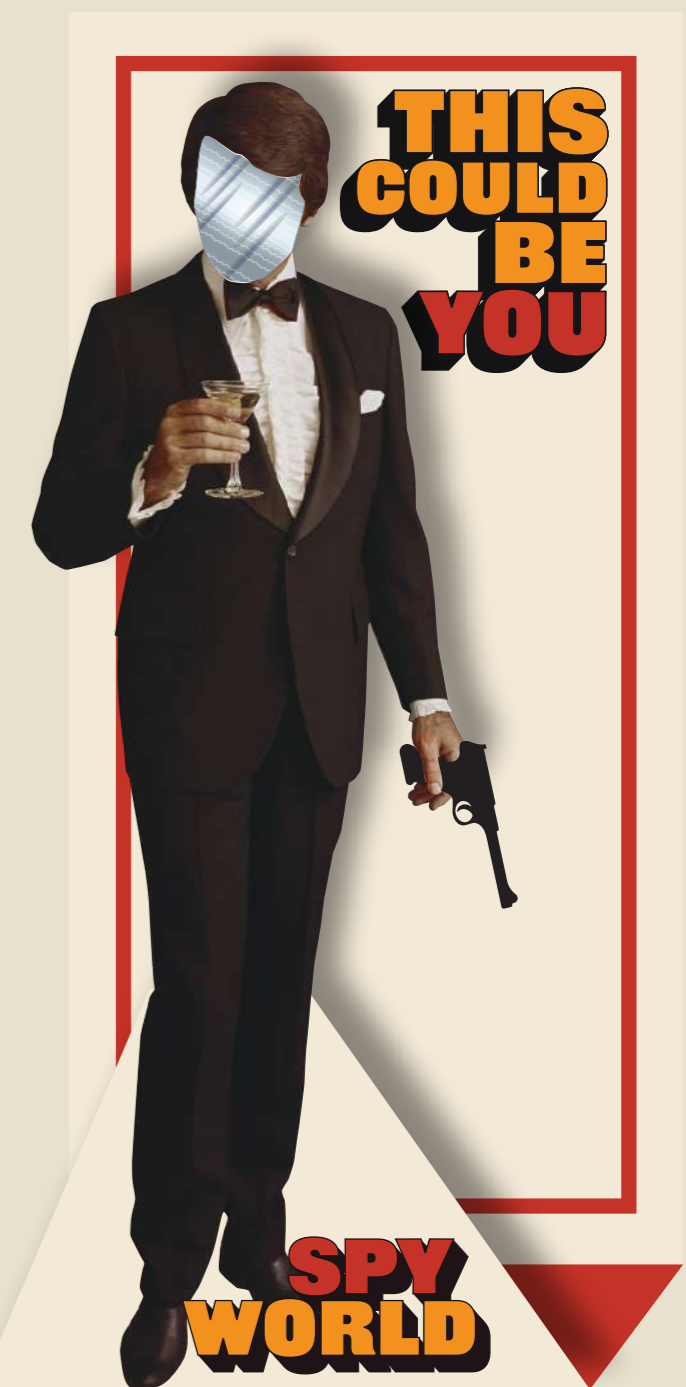
INT JUNCTION ATRIUM

PROGRESS PHOTOS



INT JUNCTION - TRADE SHOW FLOOR

SET BUILD







INT JUNCTION - TRADE SHOW FLOOR

SET BUILD



REFERENCE

REFERENCE



INT JUNCTION - TRADE SHOW FLOOR

SET BUILD

# CAPITALIST WORLD

What's the point of being rich  
...if someone else isn't poor?

ETERNITY #520

SINNERS WELCOME! 666  
WORLD of SATANISM  
BLASPHEMY ENCOURAGED!  
NOW WITH PICKLEBALL!

What's life without  
a little guilt?

+

# CATHOLIC WORLD

ETERNITY No. 614

# WINTER LAND 236

Join Our Winter Wonderland  
WinterLand Eternity 236  
Eternity's Number 1 WinterLand

All Rights Reserved  
©WinterLand Limited

# Beach World 1050

The afterlife  
is better at  
the beach.

Marine cove in beach eternity 1050

ETERNITY 365

# QUEER WORLD

NO STRAIGHTS ALLOWED

# BROMANCE WORLD

FEELINGS ENCOURAGED EDITION

Best Friends  
...Forever

Eternity No. 101

# Infantilization Land

NEVER-ENDING CHILDHOOD.  
PARENTS ASSIGNED ON ARRIVAL.

ETERNITY #113

# ETERNITY COWBOY NO. 167 WORLD

BROKEBACK EDITION

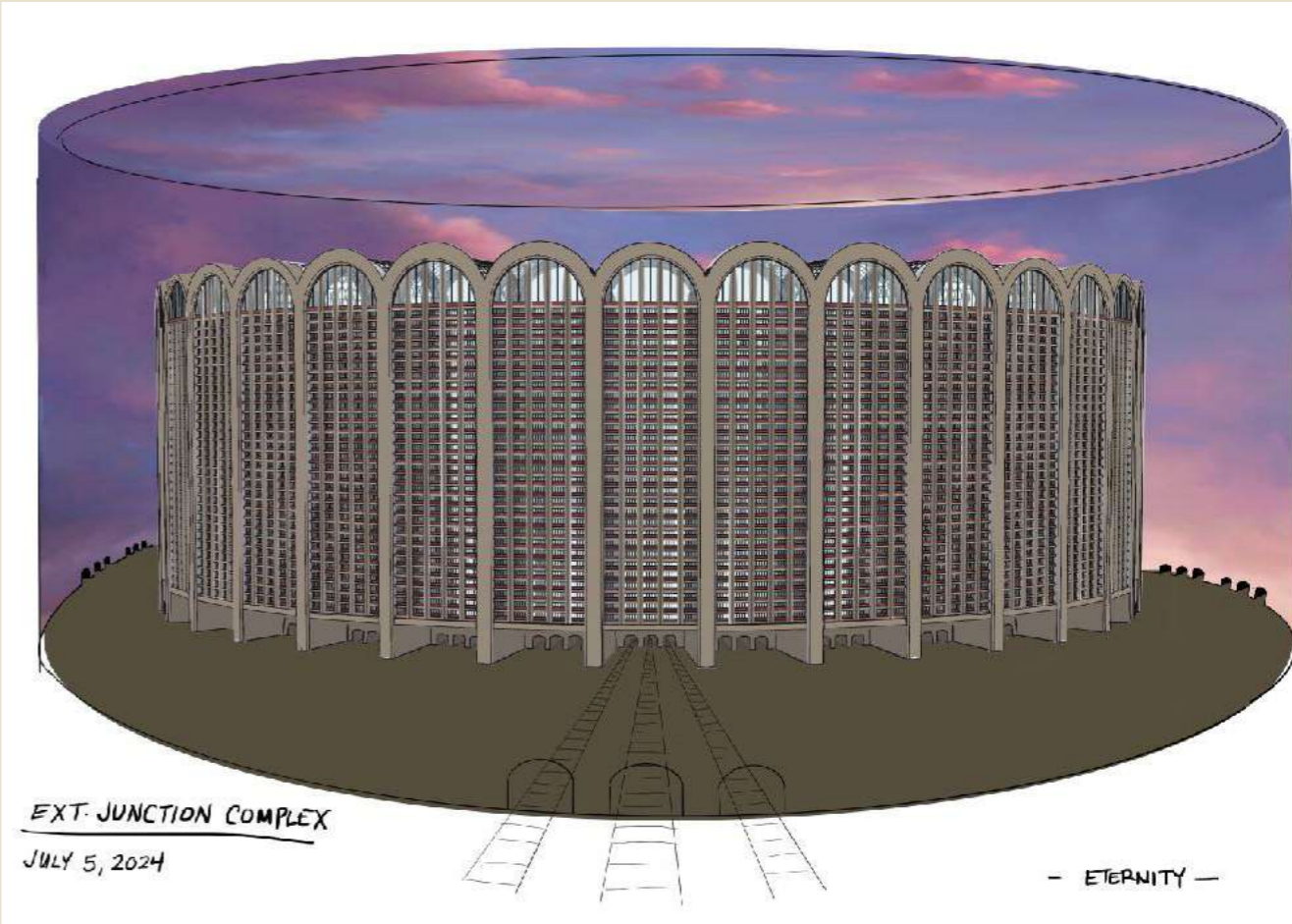


WIP PAINTED TILES



REFERENCE

EXT JUNCTION HOTEL ROOM



EXT. JUNCTION COMPLEX

JULY 5, 2024

— ETERNITY —



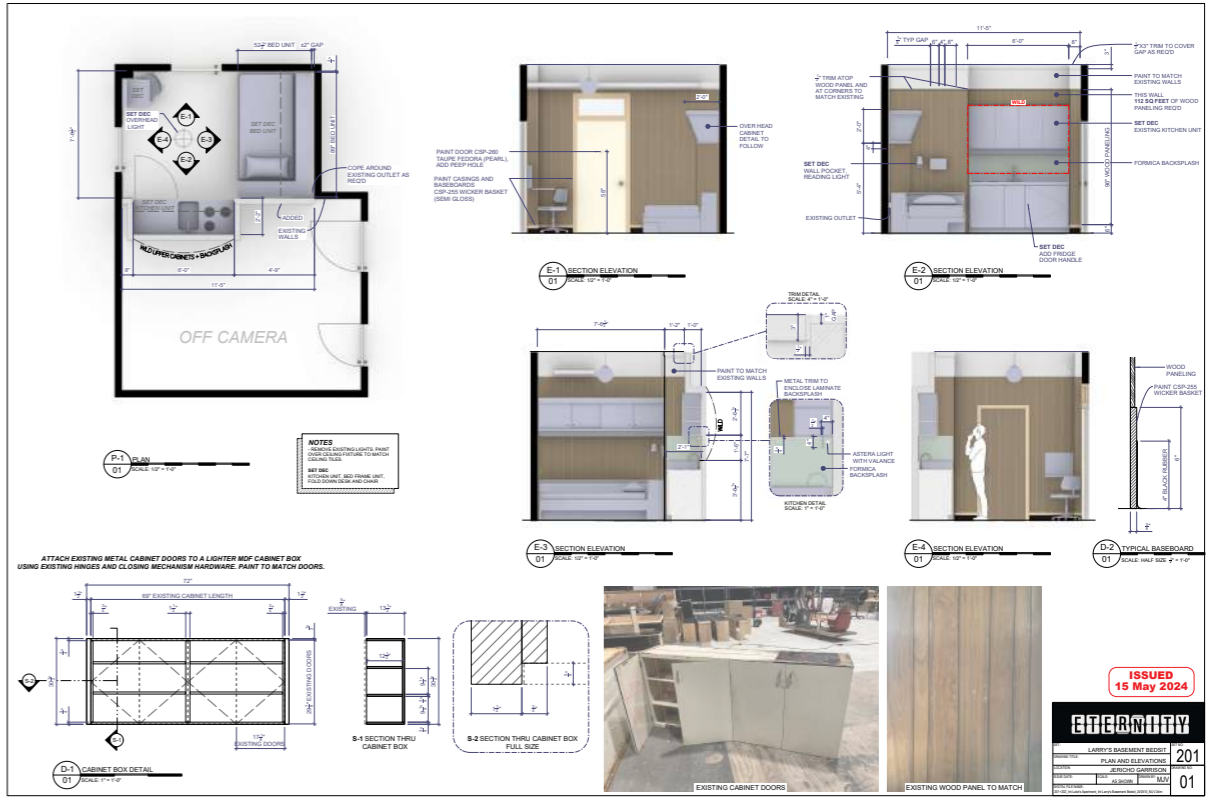
SHAG CARPET

SOFA  
UPHOLSTERY  
- JOAN -

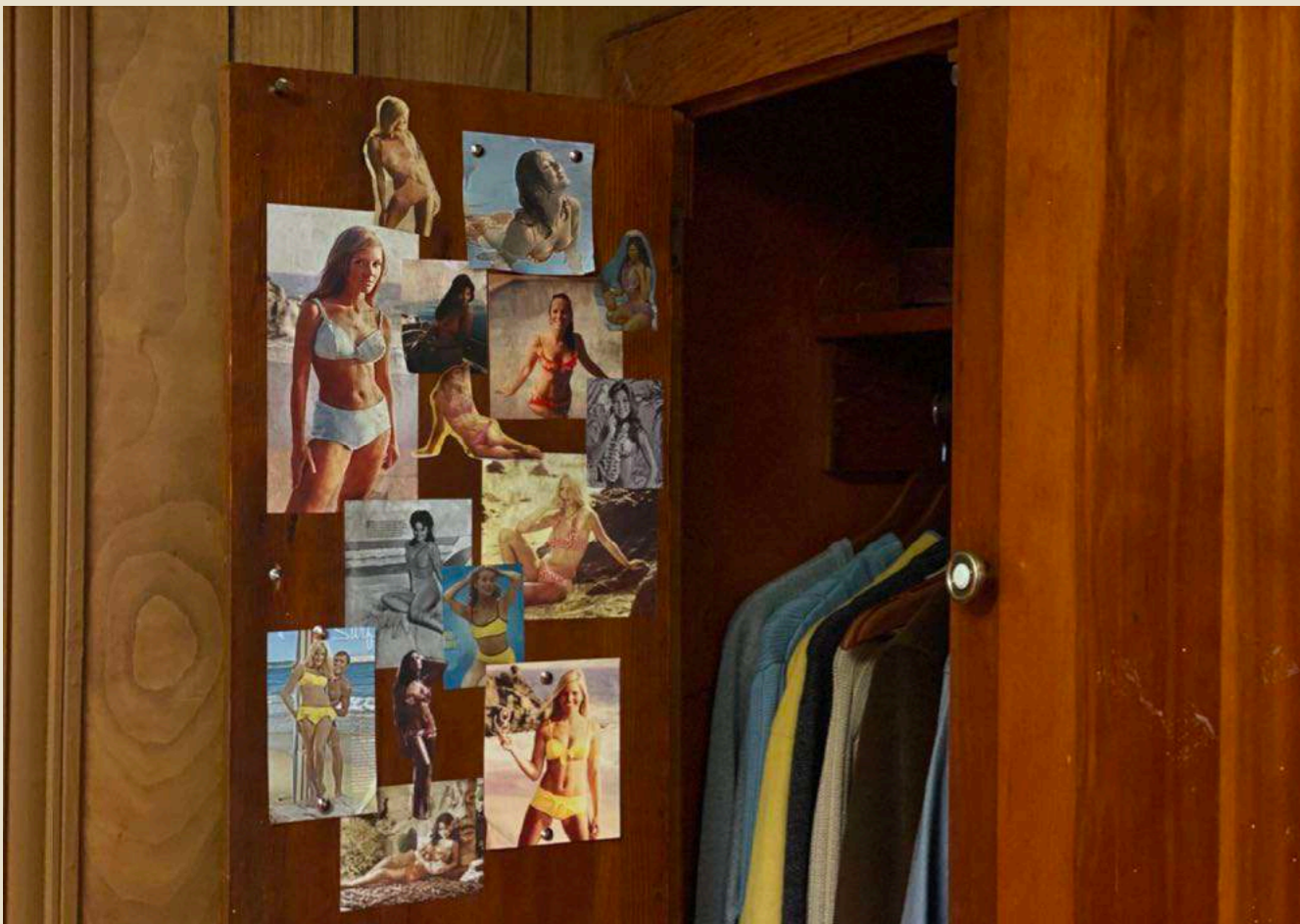
WALLPAPER  
ABOVE CHAIR RAIL



INT JUNCTION - JOAN'S HOTEL ROOM

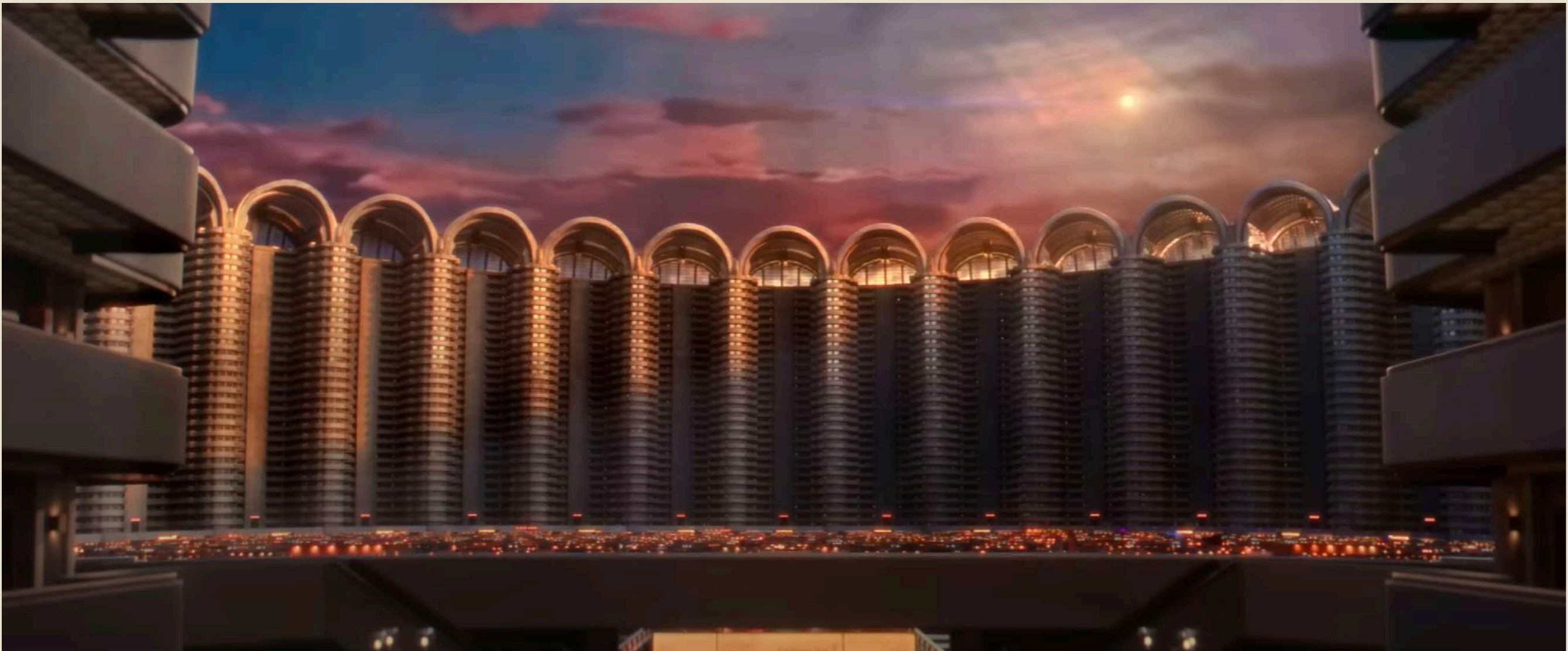


INT JUNCTION - LARRY'S APARTMENT



INT JUNCTION - LUKE'S APARTMENT

BUILD ON LOCATION



JUNCTION COMPLEX



INT JUNCTION - BAR

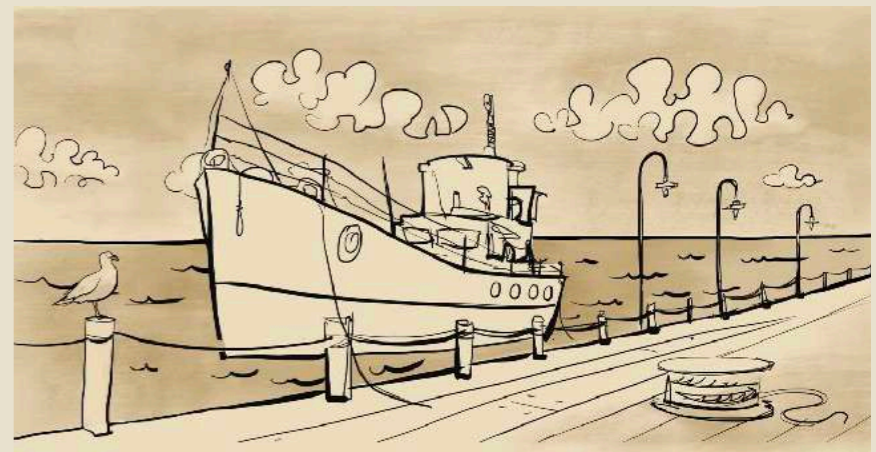
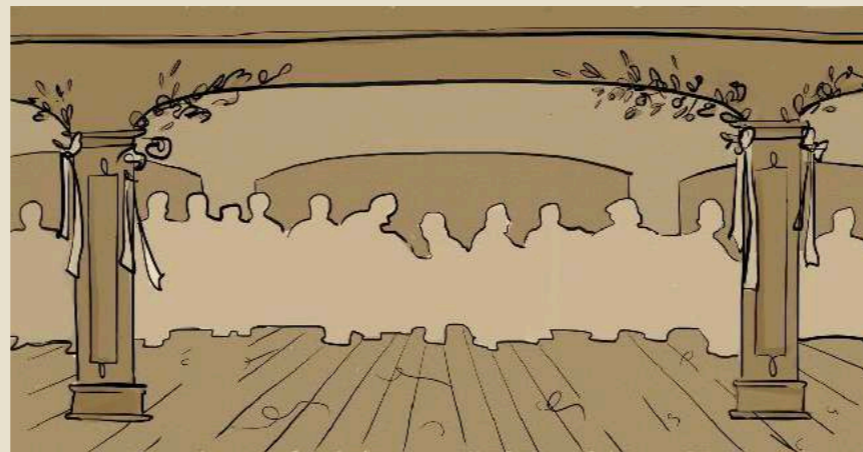
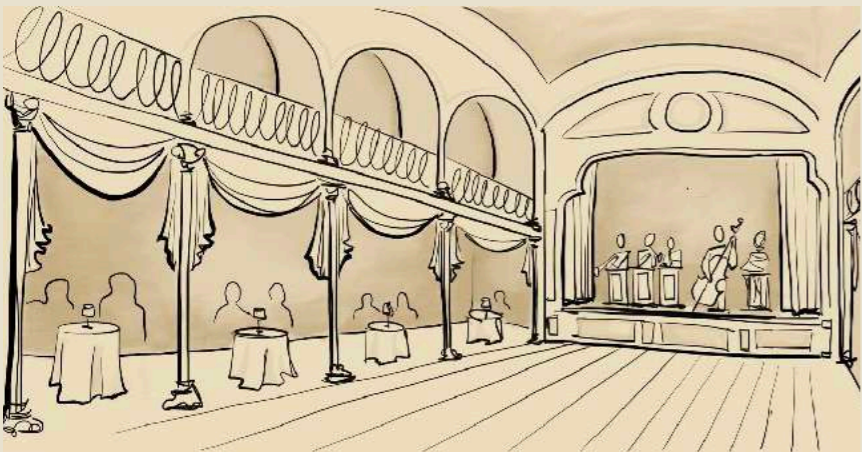


EXT MOUNTAIN ETERNITY - ARCHIVE TUNNEL



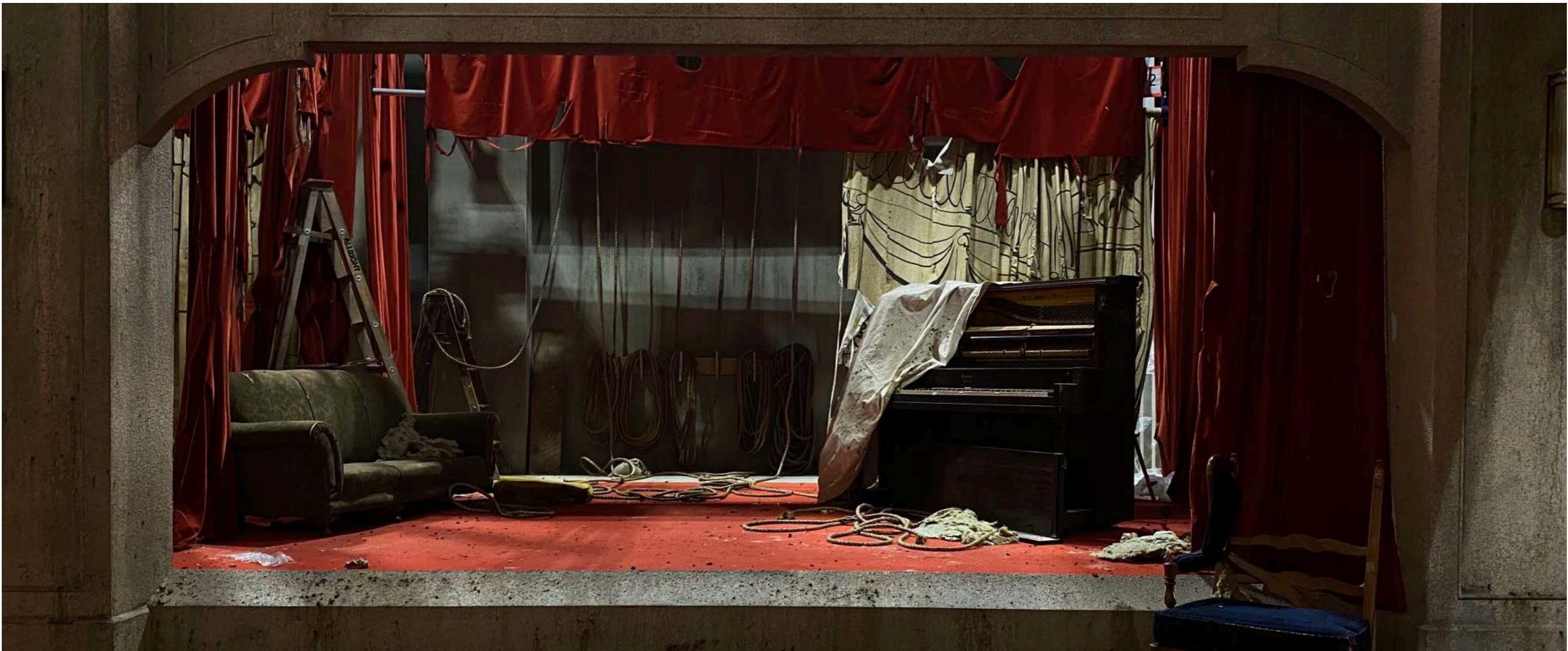
INT ARCHIVE TUNNEL

SET BUILD



INT ARCHIVE TUNNEL

STAGE BACKDROP ILLUSTRATIONS



INT DECAYED ARCHIVE TUNNEL



ETERNITY STILL



LOCATION PHOTO

EXT BEACH ETERNITY



And thrown away the key  
REFERENCES



REFERENCES



EXT BEACH ETERNITY ARCHIVE TUNNEL

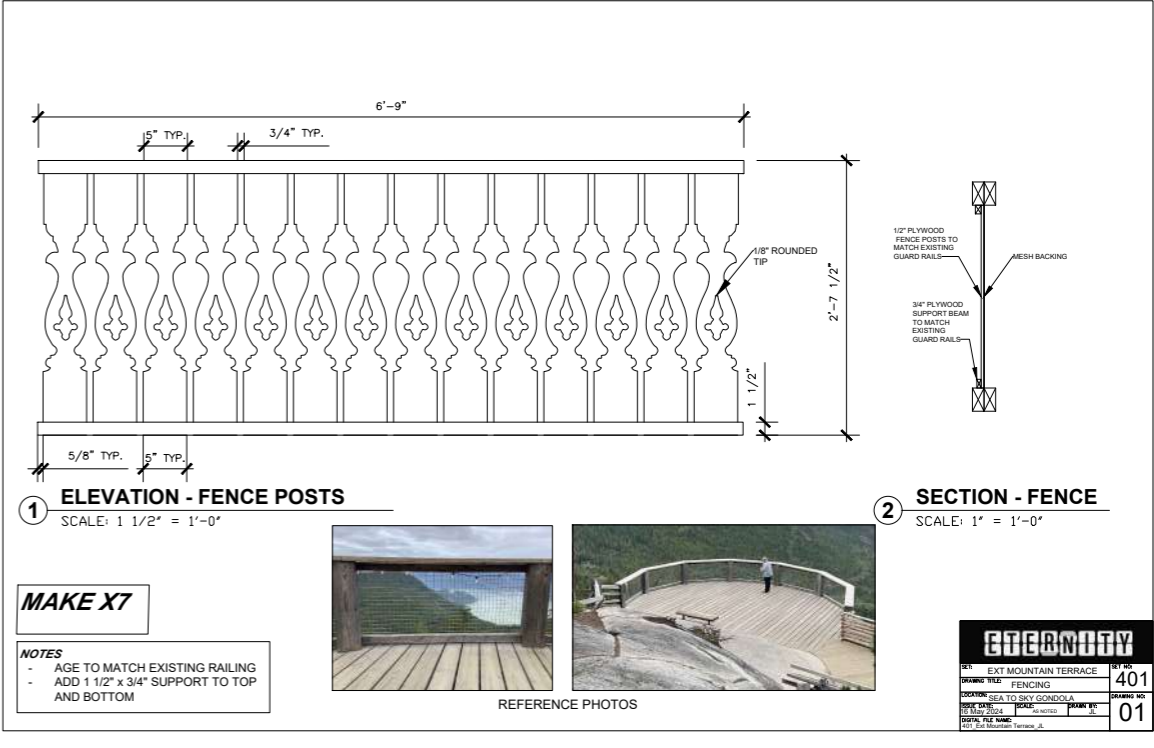


LOCATION PHOTO



UPHOLSTERY FABRIC





INT MOUNTAIN ETERNITY - TERRACE

# Art Department

PRODUCTION DESIGNER.....Zazu Myers  
ART DIRECTOR.....Andrew Li  
ASSISTANT ART DIRECTOR.....Melanie Viger  
SET DESIGNER.....Michael Erickson  
SET DESIGNER.....Eunjung Kim  
LEAD GRAPHIC DESIGNER.....Sara Borowski  
GRAPHIC DESIGNER.....Lisa Canzi  
ART DEPT COORDINATOR.....Wenke Li  
ART DEPT TRAINEE.....Jessica Lehtola  
ILLUSTRATOR - PAINTED BACKINGS.....Bill Munsie  
ILLUSTRATOR.....Ron Turner  
CONCEPT ARTIST.....Pouya Moayedi  
SET DECORATOR.....Janessa Hitsman