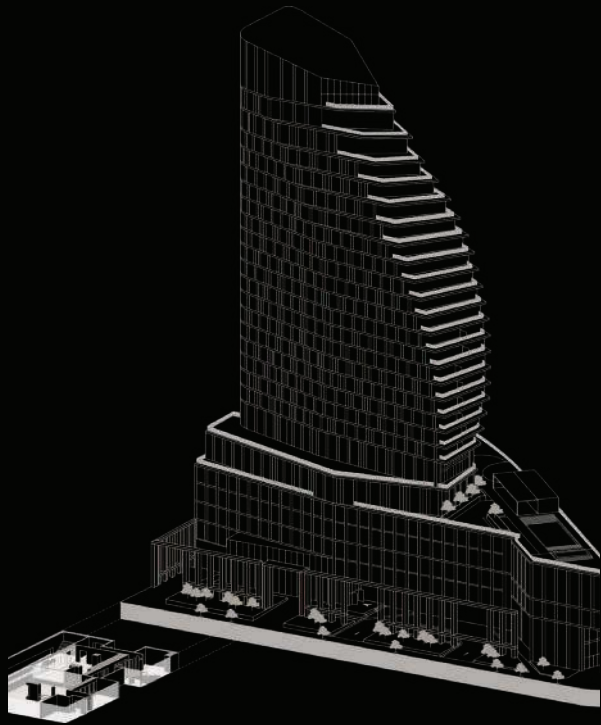


FOR YOUR CONSIDERATION

HIGHEST 2 LOWEST

PRODUCTION DESIGNER	SUP. ART DIRECTOR	SET DECORATOR	CONCEPT ILLUSTRATORS	STORYBOARD ARTISTS	ART DEPT. COORDINATOR	ART DIRECTOR	ASST. ART DIRECTORS	GRAPHIC DESIGNERS	RESEARCHER
MARK FRIEDBERG	LAURA BALLINGER GARDNER	LISA CRIVELLI SCOPPA	HUGH SICOTTE MATTHEW SAMA	FLOYD HUGHES SOLOMON HUGHES	JIN RHIM	MICHAEL SIMMONS	MICHAEL AUSZURA AIMEE DOMBO DESMOND LISA MERIK REID THOMPSON	ERICA HOHF ERIK KNIGHT ADAM BRUSTEIN JUN TANIMOTO	ISABELLA GERVASONI



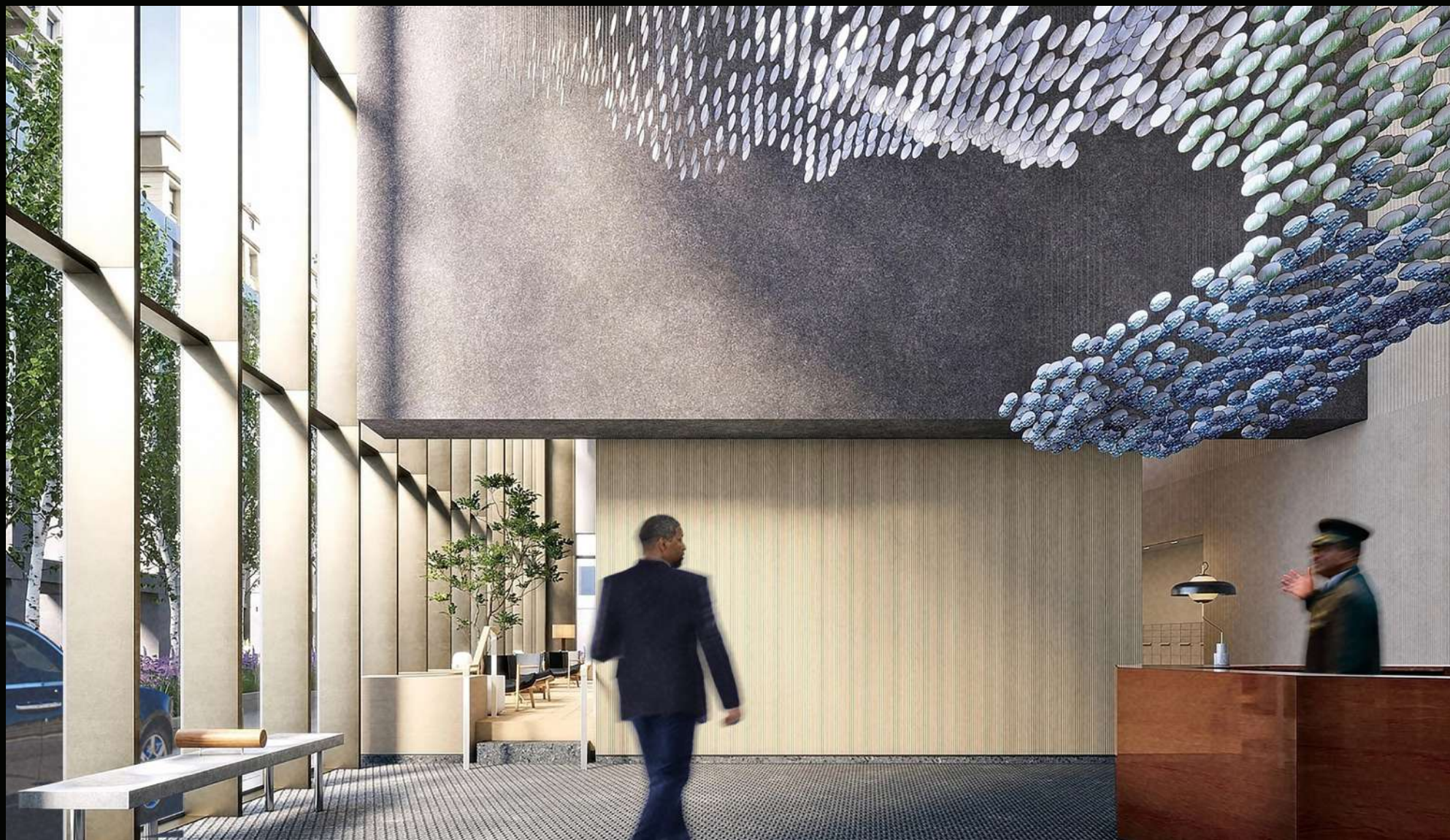
OLYMPIA DUMBO - BROOKLYN



CONCEPT ART



DAVID KING'S PENTHOUSE - OLYMPIA DUMBO - BROOKLYN



CONCEPT ART

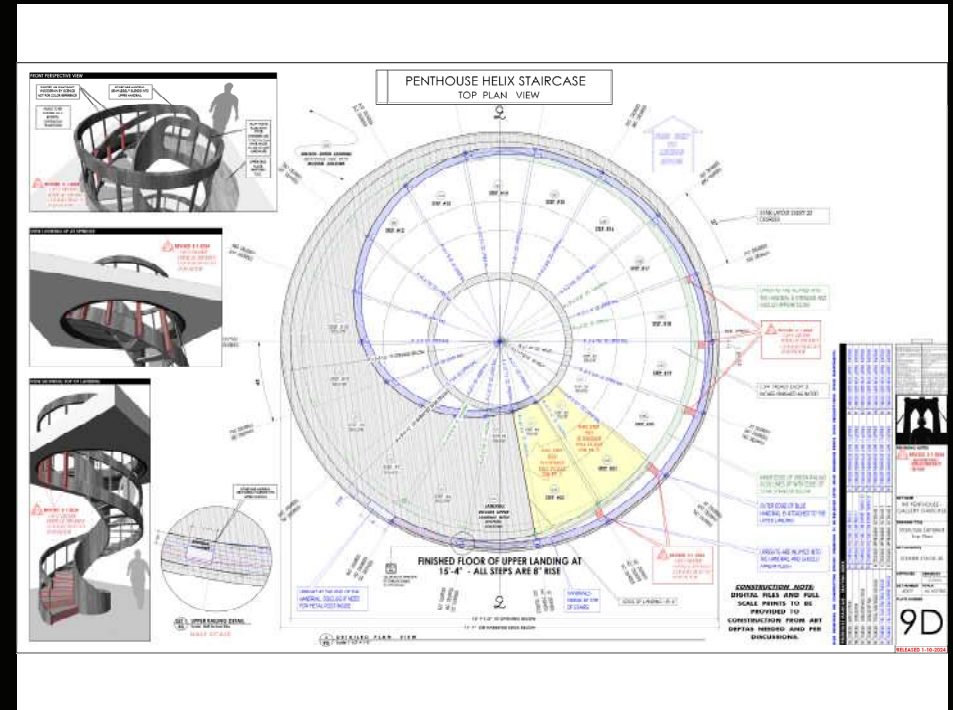
LOBBY - OLYMPIA DUMBO - BROOKLYN



CONCEPT ART



DAVID KING'S PENTHOUSE - LIVING ROOM - STAGE



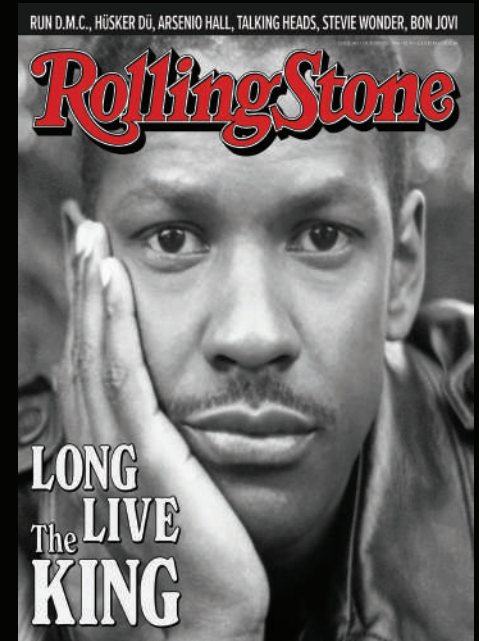
DAVID KING'S PENTHOUSE - STAIRCASE - STAGE



DAVID KING'S PENTHOUSE - KITCHEN - STAGE



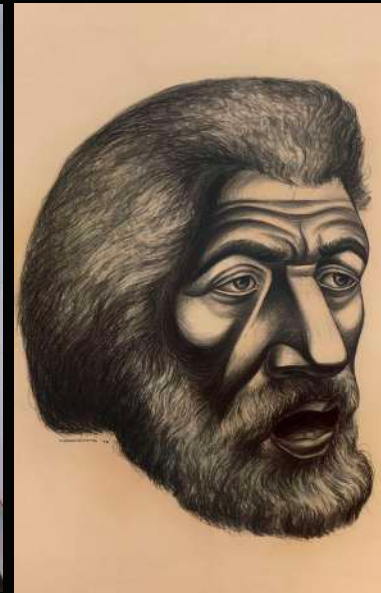
DAVID KING'S PENTHOUSE - DINING ROOM - STAGE

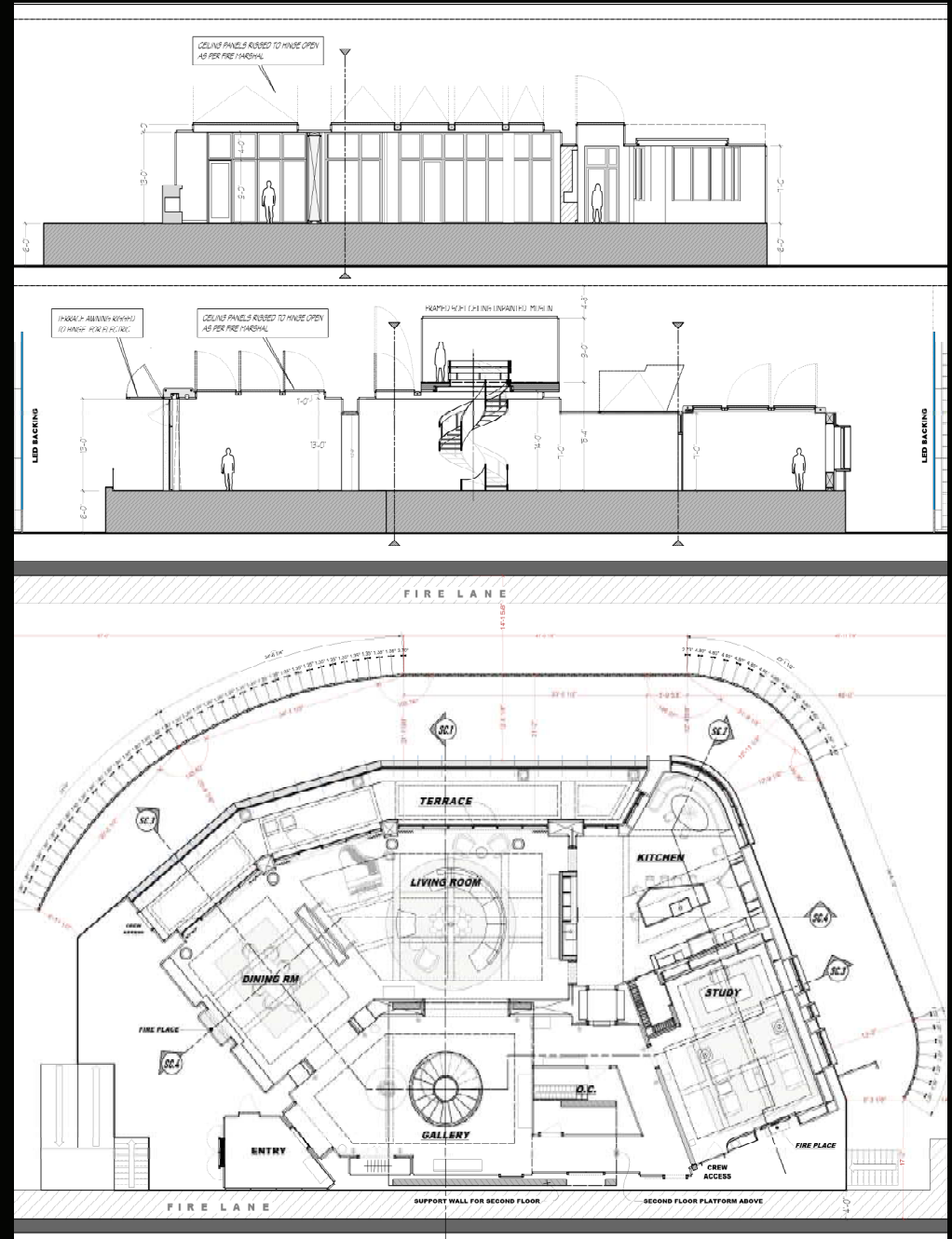


DAVID KING'S PENTHOUSE - STUDY - STAGE



DAVID KING'S PENTHOUSE - UPSTAIRS HALL & BEDROOMS - STAGE/OLYMPIA DUMBO



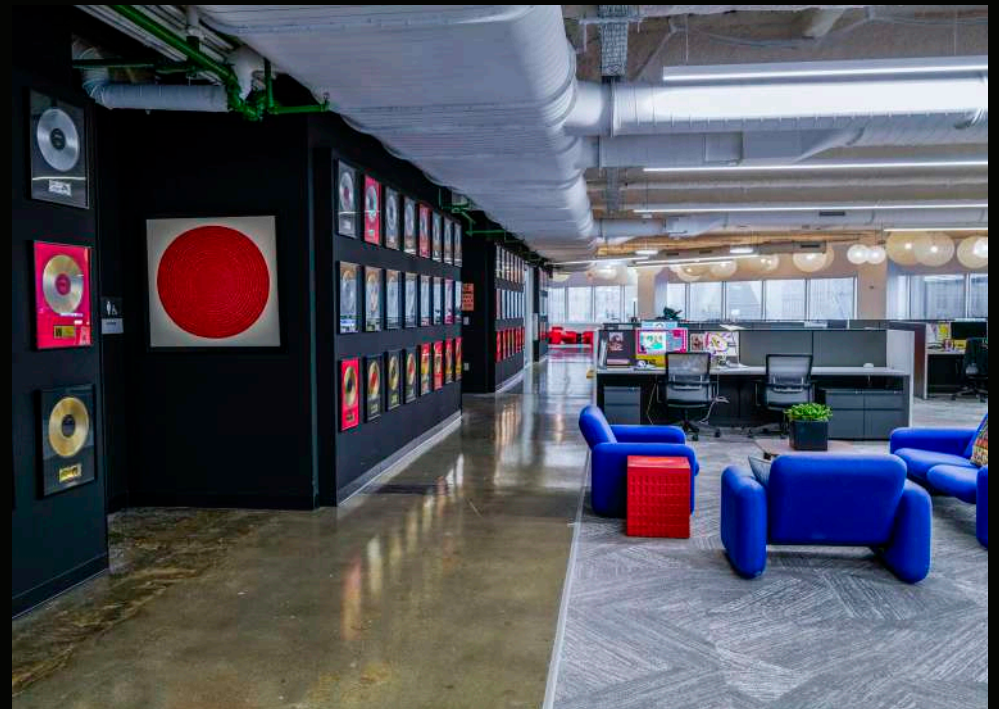
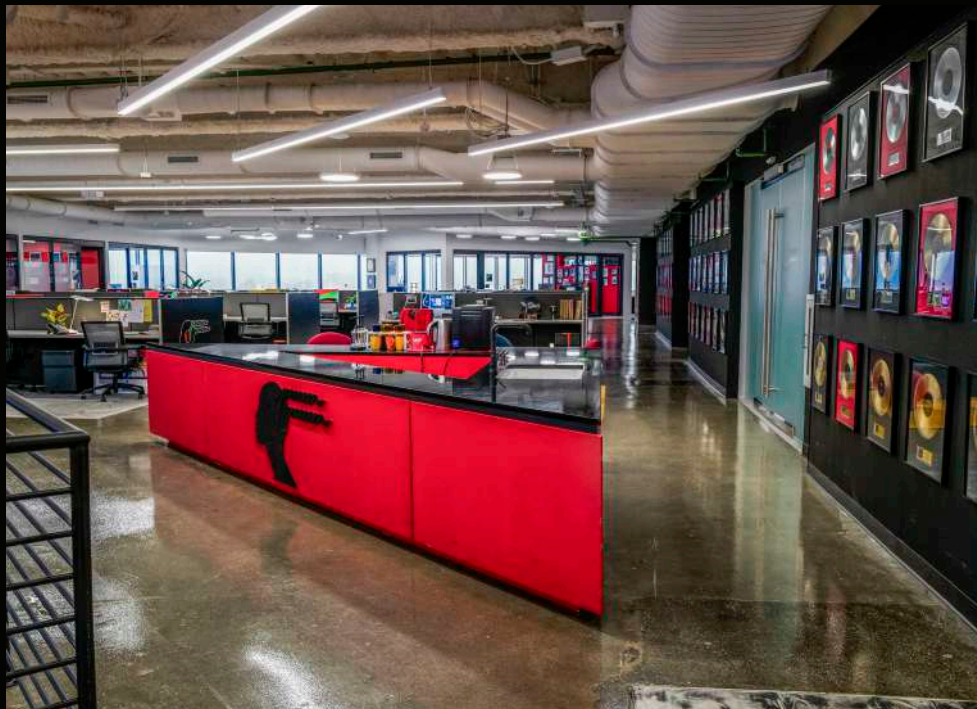
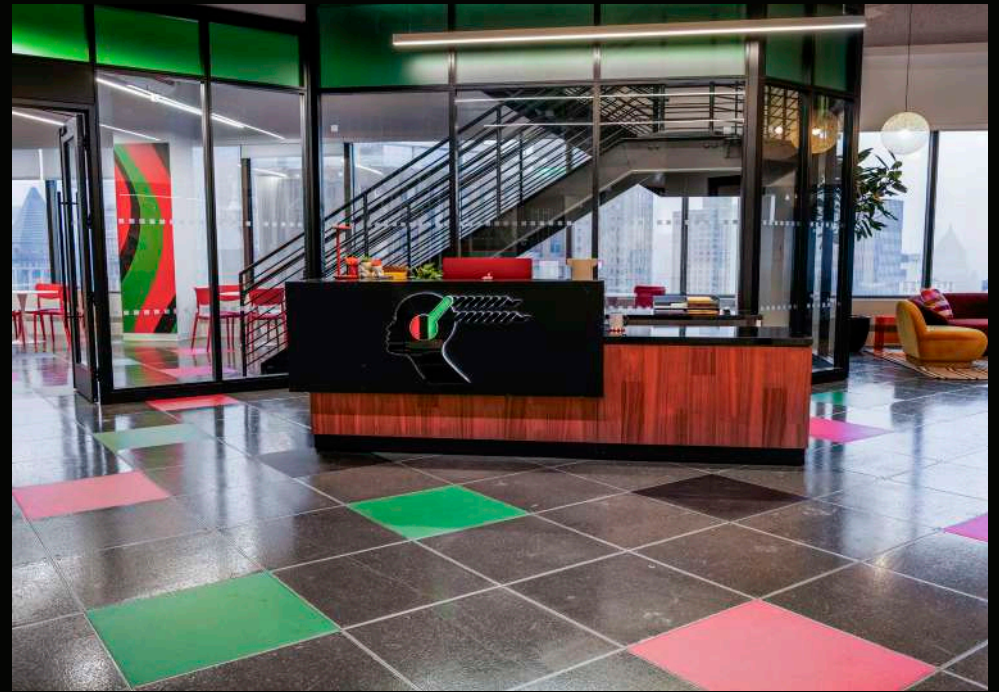


ase #1 Int. Penthouse Set # 4002 -4007



CONCEPT ART

STACKIN' HITS RECORDS - FINANCIAL DISTRICT, NYC



STACKIN' HITS RECORDS - FINANCIAL DISTRICT, NYC



STACKIN' HITS RECORDS - FINANCIAL DISTRICT, NYC



STACKIN' HITS RECORDS - FINANCIAL DISTRICT, NYC



STACKIN' HITS RECORDS - FINANCIAL DISTRICT, NYC



STACKIN' HITS RECORDS - FINANCIAL DISTRICT, NYC

WORK NOTES

DAVID'S OFFICE - NEW SET BUILD ON LOCATION. SEE PLATE 01
COFFEE BAR UNDERCOUNTER UNIT. SEE PLATE 03
GOLD RECORD/MAGAZINE FLATS SEE PLATE 04

STAIRS FROM 30TH FLOOR. SPACE BETWEEN FLOORS GOES BLACK AND RED. TURFBACK OVER 10E KICK OF RAILING AND PAINT RED.
PAINT INTERIOR BUILDING CORE WALL BLACK IN SET AREA. TURFBACK OVER BASEBOARD AND PAINT BLACK.
TURFBACK AND PAINT UNDER SIDE OF COFFEE BAR RED. SEE PLATE 03
GLOSTY BLACK VINYL OVER COFFEE BAR COUNTER
FROST OVER ELEVATOR BANK DOORS
SPINNER PIPS IN SET AREA PAINTED GREEN
PULL AND RESTORE FROST ON OFFICES WHERE INDICATED
COVER OUTSIDE SURFACE OF WORKSTATION ENCLOSURES WITH GLOSSY BLACK VINYL
DAVID'S OFFICE NEW SET BUILD ON LOCATION. RED FEATURE WALL INTERIOR & EXTERIOR. WHITE WALLS THE REST OF THE SET
WINDOWFRAMES NEAR DAVID'S VINYL OVER EXISTING WINDOWFRAME
TURFBACK RED ON BACK WALL OF PHONEBOOTH
PATRICK'S OFFICE ONE WALL GOES GRAY (3X) RED FEATURE WALLS IN MEETING ROOM N.E. SIDE OF BUILDING
CONFERENCE ROOM SUPERGRAPHIC. SEE GRAPHIC LAYOUT 07

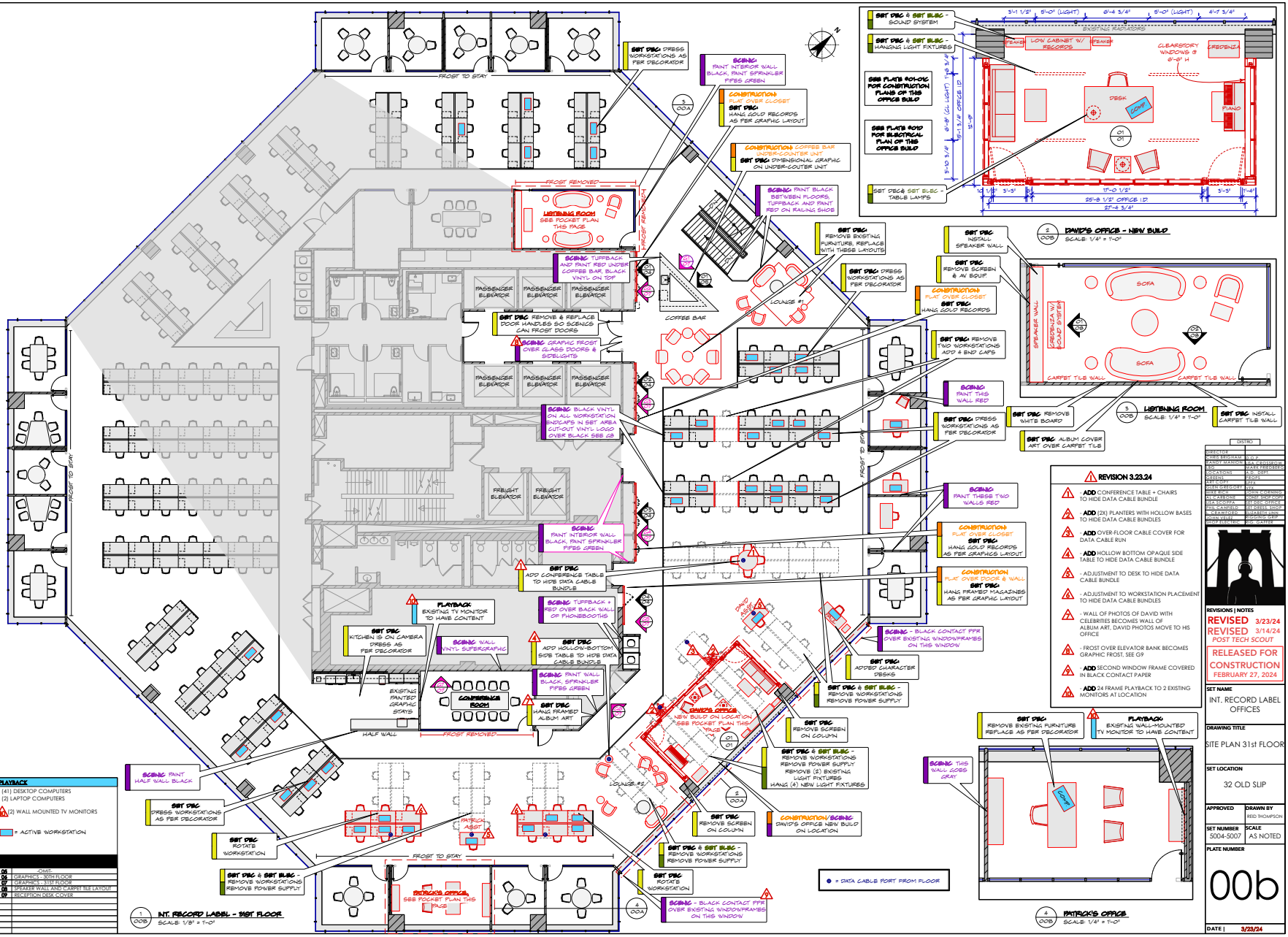
SET DEC.
COFFEE BAR AREA - REMOVE & REPLACE EXISTING FURNITURE
COFFEE BAR DRESS COUNTERTOP WITH APPLIANCES AS PER DECORATOR
COFFEE BAR INSTALL DIMENSIONAL GRAPHIC ON SCENIC PIECE UNDER COUNTER. SEE GRAPHIC LAYOUT 01
REMOVE EXISTING SIGN THROUGHOUT SET AREA. TEMPORARY SIGNS AS REQUIRED
REMOVE & REPLACE LADDER HANDLES ON ELEVATOR AREA GLASS DOORS SO SIGNALS CAN PROTECT THEM
LOUNGE #1 - REMOVE AND REPLACE EXISTING FURNITURE AND RUG
LISTENING ROOM - REMOVE SCREEN & AV EQUIP
LISTENING ROOM - INSTALL CHAPER WALL. SEE DRAWING PLATE 08
LISTENING ROOM - INSTALL CARPET TILE WALL. SEE DRAWING PLATE 08
LISTENING ROOM - NEW FURNITURE
REMOVE & ROTATE WORKSTATIONS AS PER PLAN. WORK WITH SET LX TO REMOVE HARDWARE POWER
ADD 4X ENDCAPS TO EXISTING WORKSTATIONS WHERE CENTER "ASIE" IS REMOVED
REMOVE EXISTING INCIDENTAL FURNITURE
SET AREA (TABLES, CHAIRS ETC) EXISTING WORKSTATION CHAIRS REMAIN. EXISTING MEETING ROOM FURNITURE REMAINS WHERE INDICATED
DRESS WORKSTATIONS AS PER DECORATOR WITH COMPTON ETC
HANG FRAMED GOLD RECORDS ON FLATS OVER CLOSETS PER GRAPHIC LAYOUTS 02-04
HANG FRAMED MAGAZINE COVERS ON WALLS INDICATED AS PER GRAPHIC LAYOUT 05
HANG FRAMED PHOTOS OF DAVID AND CELEBRITIES ON WALL INDICATED
COVER ALL EXISTING ROOMCARTER SIGNAGE AND PADS WITH GRAPHICS AS PER GRAPHIC LAYOUT
DAVID'S OFFICE AREA - REMOVE (2X) SCREENS
DAVID'S OFFICE - NEW SET BUILD ON LOCATION. 4X NEW HANGING LIGHTING. FURNITURE AND DRESS. ART ON WALLS
DAVID'S ASST. AND PAUL DESK ADDED
PATRICK'S OFFICE - REMOVE EXISTING FURNITURE
PATRICK'S OFFICE - NEW FURNITURE AND DRESSING. ARTWORK ON WALLS
PATRICK'S ASSISTANT'S DESK ADDED
DRESS EXISTING KITCHEN AS PER DEC.

SET ELECTRICS
REMOVE EXISTING SIGNS WITH SET DEC
REMOVE POWER SUPPLY TO WORKSTATIONS WHERE INDICATED. WIRE WORKSTATIONS WHERE INDICATED
REMOVE EXISTING LIGHTS OVER DAVID'S OFFICE AREA. REPLACE AS PER DEC.

GRAPHICS
(22) ROOM ID SIGN COVERS
(14) ROOM ID PAD COVERS
UNDER COFFEE BAR GRAPHIC - G1
ART IN DAVID'S OFFICE
GOLD RECORDS - 02, 03, 04
MAGAZINE COVERS - 05
PHOTOS WITH CELEBRITIES
CONFERENCE ROOM SUPERGRAPHIC - 07
ART IN PATRICK'S OFFICE

DRAWING INDEX - SET 0004-0007

01	DAVID'S OFFICE - NEW SET BUILD ON LOCATION. SEE PLATE 01
02	DAVID'S OFFICE - NEW SET BUILD ON LOCATION. SEE PLATE 02
03	DAVID'S OFFICE - NEW SET BUILD ON LOCATION. SEE PLATE 03
04	DAVID'S OFFICE - NEW SET BUILD ON LOCATION. SEE PLATE 04
05	DAVID'S OFFICE - NEW SET BUILD ON LOCATION. SEE PLATE 05
06	DAVID'S OFFICE - NEW SET BUILD ON LOCATION. SEE PLATE 06
07	DAVID'S OFFICE - NEW SET BUILD ON LOCATION. SEE PLATE 07
08	DAVID'S OFFICE - NEW SET BUILD ON LOCATION. SEE PLATE 08
09	DAVID'S OFFICE - NEW SET BUILD ON LOCATION. SEE PLATE 09
10	DAVID'S OFFICE - NEW SET BUILD ON LOCATION. SEE PLATE 10
11	DAVID'S OFFICE - NEW SET BUILD ON LOCATION. SEE PLATE 11
12	DAVID'S OFFICE - NEW SET BUILD ON LOCATION. SEE PLATE 12
13	DAVID'S OFFICE - NEW SET BUILD ON LOCATION. SEE PLATE 13
14	DAVID'S OFFICE - NEW SET BUILD ON LOCATION. SEE PLATE 14
15	DAVID'S OFFICE - NEW SET BUILD ON LOCATION. SEE PLATE 15
16	DAVID'S OFFICE - NEW SET BUILD ON LOCATION. SEE PLATE 16
17	DAVID'S OFFICE - NEW SET BUILD ON LOCATION. SEE PLATE 17
18	DAVID'S OFFICE - NEW SET BUILD ON LOCATION. SEE PLATE 18
19	DAVID'S OFFICE - NEW SET BUILD ON LOCATION. SEE PLATE 19
20	DAVID'S OFFICE - NEW SET BUILD ON LOCATION. SEE PLATE 20
21	DAVID'S OFFICE - NEW SET BUILD ON LOCATION. SEE PLATE 21
22	DAVID'S OFFICE - NEW SET BUILD ON LOCATION. SEE PLATE 22



REVISION	DATE	DESCRIPTION
1	3/23/24	REVISION 3.23.24
2	3/14/24	REVISION 3.14.24
3	2/27/24	REVISION 2.27.24
4	2/27/24	REVISION 2.27.24
5	2/27/24	REVISION 2.27.24
6	2/27/24	REVISION 2.27.24
7	2/27/24	REVISION 2.27.24
8	2/27/24	REVISION 2.27.24
9	2/27/24	REVISION 2.27.24
10	2/27/24	REVISION 2.27.24
11	2/27/24	REVISION 2.27.24
12	2/27/24	REVISION 2.27.24
13	2/27/24	REVISION 2.27.24
14	2/27/24	REVISION 2.27.24
15	2/27/24	REVISION 2.27.24
16	2/27/24	REVISION 2.27.24
17	2/27/24	REVISION 2.27.24
18	2/27/24	REVISION 2.27.24
19	2/27/24	REVISION 2.27.24
20	2/27/24	REVISION 2.27.24
21	2/27/24	REVISION 2.27.24
22	2/27/24	REVISION 2.27.24



REVISIONS / NOTES
REVISED 3/23/24
REVISED 3/14/24
POST TECH SCOUT
RELEASED FOR CONSTRUCTION
FEBRUARY 27, 2024

SET NAME
INT. RECORD LABEL OFFICES

DRAWING TITLE
SITE PLAN 31st FLOOR

SET LOCATION
32 OLD SLIP

APPROVED
RED THOMPSON

DRAWN BY
RED THOMPSON

SET NUMBER
5004-0007

SCALE
AS NOTED

PLATE NUMBER
00b

DATE
3/23/24

SITE PLAN

STACKIN' HITS RECORDS - FINANCIAL DISTRICT, NYC

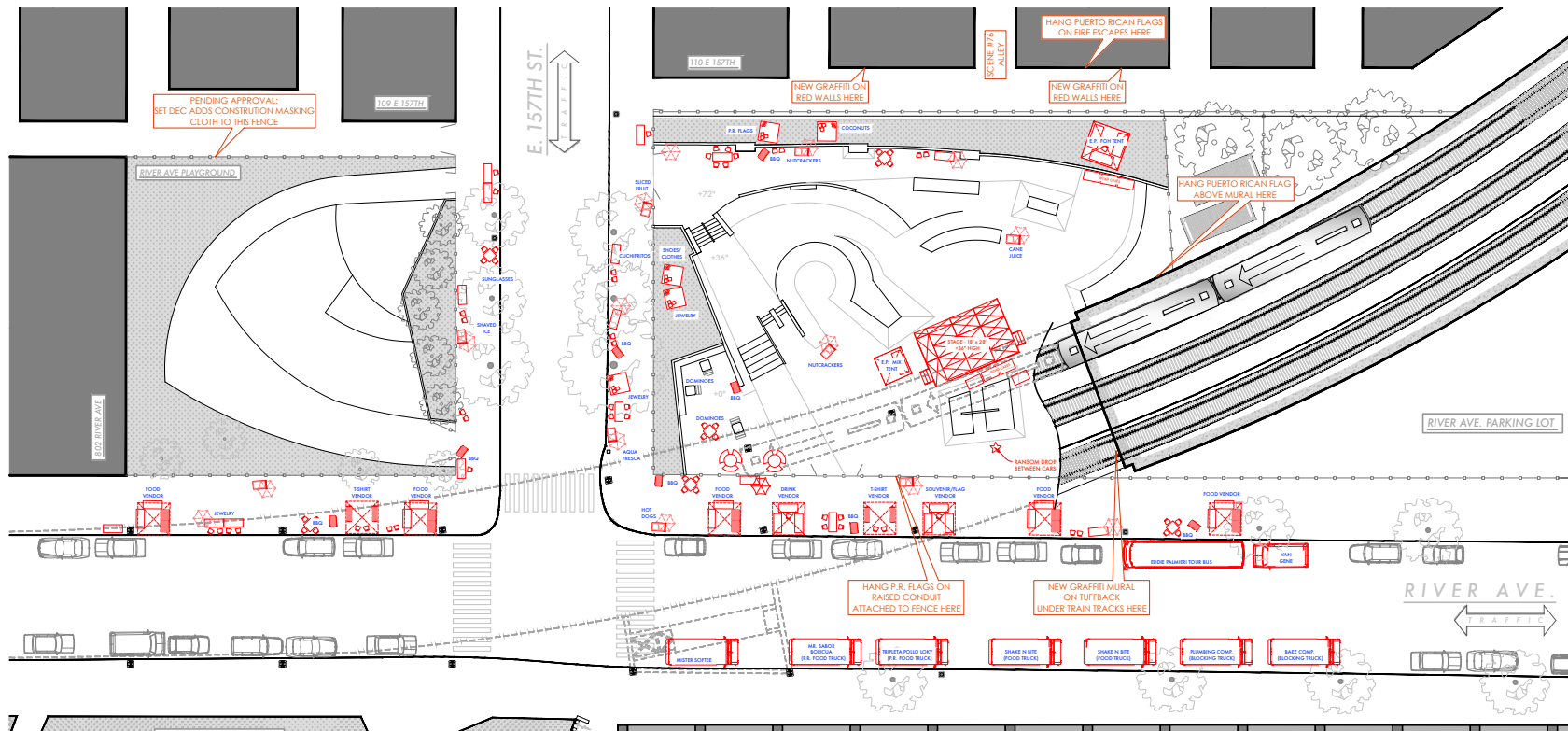


CONCEPT ART

PUERTO RICAN DAY PARADE - RIVER AVE SKATE PARK - BRONX



PUERTO RICAN DAY PARADE - RIVER AVE SKATE PARK - BRONX



WORK NOTES
CONSTRUCTION
INSTALL 14' x 28' @ 30' STEELDECK STAGE - SEE SHEET 2
SKIN TOP OF STAGE WITH DIRECT PRINT MDO PUERTO RICAN FLAG GRAPHIC
ADD SET DRESSING WITH RIGGING AS NEEDED
SCENE
TUFFBACK COVER AS NEEDED FOR NEW GRAFFITI
AGE PUERTO RICAN FLAGS AND FLAG DROPS FOR STAGE
AGE SUN COVER OVER TOP OF STAGE
GRAFFITI ARTISTS PAINT TODEE PALMER ON STAGE SKIRT BANNER
AGE/TEE IN REGGION HARDWARE AROUND STAGE
TBD BLOCKING TRUCK GRAPHICS/GRAFFITI
ADD GRAFFITI TO RED WALLS IN BACK OF PARK
ADD GRAFFITI TO BLOCKING TRUCKS (CONFIRM WITH M. SIMMONS)
SET DEC
PROVIDE AND HANG PUERTO RICAN FLAGS & FLAG DROPS ON STAGE
DRESS VENDOR BOOTHS PER PROVIDED VENDOR PLAN
HANG PUERTO RICAN FLAGS FROM FENCE UNDER TRAIN TRACKS ON CONDUIT 2P TIED TO FENCE
ADD CONDUIT TO IRON FENCE WITH ZIPTIES, STRING FLAGS BETWEEN UPRIGHTS
ADD IRBOS LAWN CHAIRS, FAMILY STYLE. SEX TO ADD SMOKE
SWAP OUT EXISTING HANGING SNEAKERS UNDER TRAIN TRACKS FOR NIE REPLACEMENTS
DRESS ROAD CASES BEHIND STAGE
ADD METAL CROWD BARRICADES IN STREETS
HANG STAGE SKIRT BANNER AFTER GRAFFITI WORK
DRESS 'SCENE #76 ALLEY' AND CLEAN UP ANY EXISTING HAZARDS
ADD P.R. FLAGS ON FIRE ESCAPES ABOVE RED WALLS
ADD MASKING CLOTH TO FENCE IN PLAYGROUND (PENDING APPROVAL)
LOCATIONS
STANDBY SECURITY FOR ALL DRESSING AND SHOOTING DAYS
APPROVAL FROM PARKS AND DOB ON STAGE
BATHROOMS AND RUNNING WATER FOR PREP CREW
ENGINEER CONFIRMATION OF FIRE ESCAPE FOR CREW ACCESS

① LOCATION PLAN - ELEVATED SUBWAY TRACKS REMOVED
RIVER AVE. SKATE PARK

1/16"=1'-0"

VENDOR	COUNT	SYMBOL (NTS)	REFERENCE
SOUVENIR/FLAG SHOP (IN 10' POP TENT)	2		
FOOD VENDOR (IN 10' POP TENT)	5		
TSHIRT/CLOTHING SHOP (IN 10' POP TENT)	2		
SHAVED ICE/ NUTCRACKER CART	3		

VENDOR	COUNT	SYMBOL (NTS)	REFERENCE
OPEN AIR BBQ	8		
PICNIC/HANDOUT AREA	15		
BLANKET VENDORS	5		

DRAWING INDEX- SET 5025
00
01
02
03
04
05
06
07



REVISED
5/8/24

SET NAME:
EXT RIVER AVE.
SKATE PARK

DRAWING TITLE:
SITE PLAN

SET LOCATION:
RIVER AVE.
SKATE PARK
E15TH & RIVER AVE, BRONX

APPROVED: [Signature]
SET NUMBER:
5025
SCALE:
1/16"=1'-0"
PLATE NUMBER:

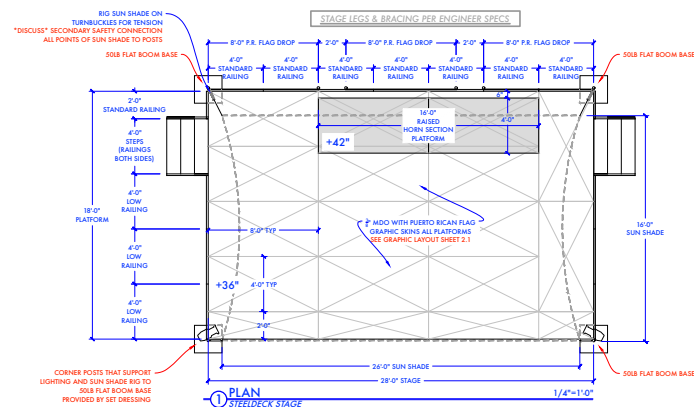
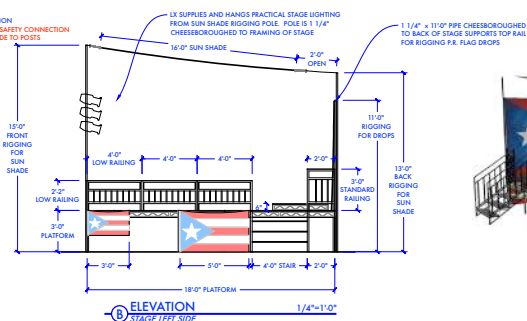
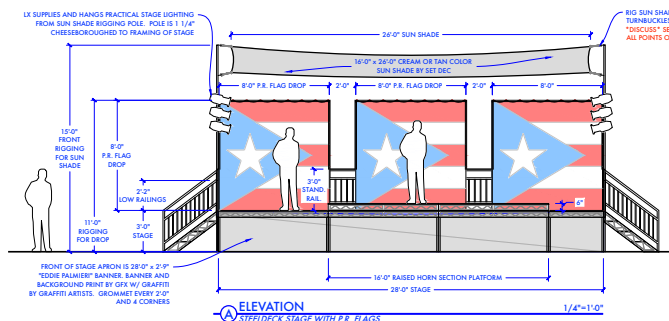
00
REV. 5/8/24

SITE PLAN

PUERTO RICAN DAY PARADE - RIVER AVE SKATE PARK - BRONX



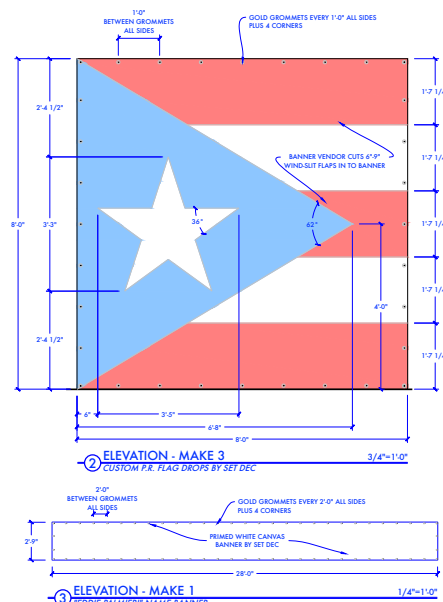
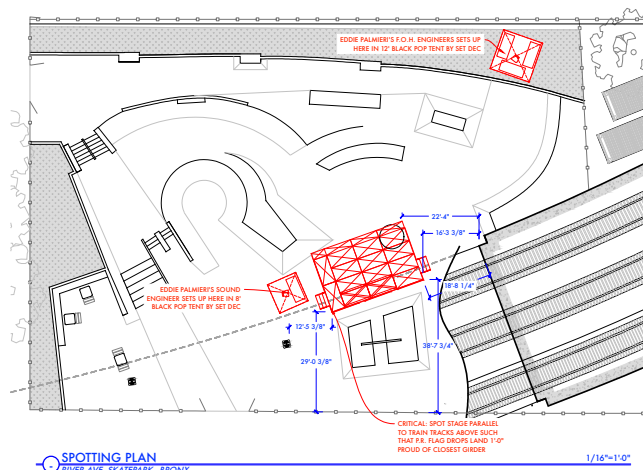
PUERTO RICAN DAY PARADE - RIVER AVE SKATE PARK - BRONX



UNIT LIST			
TIME	DATE	DESCRIPTIONS	PROVIDED BY
1	1/27/2016	2:00 - 2:15	2/18/19/27/30
2	1/28/2016	2:00 - 2:15	2/18/19/27/30
3	1/29/2016	2:00 - 2:15	2/18/19/27/30
4	1/30/2016	2:00 - 2:15	2/18/19/27/30
5	1/31/2016	2:00 - 2:15	2/18/19/27/30
6	2/1/2016	2:00 - 2:15	2/18/19/27/30
7	2/2/2016	2:00 - 2:15	2/18/19/27/30
8	2/3/2016	2:00 - 2:15	2/18/19/27/30
9	2/4/2016	2:00 - 2:15	2/18/19/27/30
10	2/5/2016	2:00 - 2:15	2/18/19/27/30
11	2/6/2016	2:00 - 2:15	2/18/19/27/30
12	2/7/2016	2:00 - 2:15	2/18/19/27/30
13	2/8/2016	2:00 - 2:15	2/18/19/27/30
14	2/9/2016	2:00 - 2:15	2/18/19/27/30
15	2/10/2016	2:00 - 2:15	2/18/19/27/30
16	2/11/2016	2:00 - 2:15	2/18/19/27/30
17	2/12/2016	2:00 - 2:15	2/18/19/27/30
18	2/13/2016	2:00 - 2:15	2/18/19/27/30
19	2/14/2016	2:00 - 2:15	2/18/19/27/30
20	2/15/2016	2:00 - 2:15	2/18/19/27/30
21	2/16/2016	2:00 - 2:15	2/18/19/27/30
22	2/17/2016	2:00 - 2:15	2/18/19/27/30
23	2/18/2016	2:00 - 2:15	2/18/19/27/30
24	2/19/2016	2:00 - 2:15	2/18/19/27/30
25	2/20/2016	2:00 - 2:15	2/18/19/27/30
26	2/21/2016	2:00 - 2:15	2/18/19/27/30
27	2/22/2016	2:00 - 2:15	2/18/19/27/30
28	2/23/2016	2:00 - 2:15	2/18/19/27/30
29	2/24/2016	2:00 - 2:15	2/18/19/27/30
30	2/25/2016	2:00 - 2:15	2/18/19/27/30
31	2/26/2016	2:00 - 2:15	2/18/19/27/30
32	2/27/2016	2:00 - 2:15	2/18/19/27/30
33	2/28/2016	2:00 - 2:15	2/18/19/27/30
34	2/29/2016	2:00 - 2:15	2/18/19/27/30
35	2/30/2016	2:00 - 2:15	2/18/19/27/30
36	3/1/2016	2:00 - 2:15	2/18/19/27/30
37	3/2/2016	2:00 - 2:15	2/18/19/27/30
38	3/3/2016	2:00 - 2:15	2/18/19/27/30
39	3/4/2016	2:00 - 2:15	2/18/19/27/30
40	3/5/2016	2:00 - 2:15	2/18/19/27/30
41	3/6/2016	2:00 - 2:15	2/18/19/27/30
42	3/7/2016	2:00 - 2:15	2/18/19/27/30
43	3/8/2016	2:00 - 2:15	2/18/19/27/30
44	3/9/2016	2:00 - 2:15	2/18/19/27/30
45	3/10/2016	2:00 - 2:15	2/18/19/27/30
46	3/11/2016	2:00 - 2:15	2/18/19/27/30
47	3/12/2016	2:00 - 2:15	2/18/19/27/30
48	3/13/2016	2:00 - 2:15	2/18/19/27/30
49	3/14/2016	2:00 - 2:15	2/18/19/27/30
50	3/15/2016	2:00 - 2:15	2/18/19/27/30
51	3/16/2016	2:00 - 2:15	2/18/19/27/30
52	3/17/2016	2:00 - 2:15	2/18/19/27/30
53	3/18/2016	2:00 - 2:15	2/18/19/27/30
54	3/19/2016	2:00 - 2:15	2/18/19/27/30
55	3/20/2016	2:00 - 2:15	2/18/19/27/30
56	3/21/2016	2:00 - 2:15	2/18/19/27/30
57	3/22/2016	2:00 - 2:15	2/18/19/27/30
58	3/23/2016	2:00 - 2:15	2/18/19/27/30
59	3/24/2016	2:00 - 2:15	2/18/19/27/30
60	3/25/2016	2:00 - 2:15	2/18/19/27/30
61	3/26/2016	2:00 - 2:15	2/18/19/27/30
62	3/27/2016	2:00 - 2:15	2/18/19/27/30
63	3/28/2016	2:00 - 2:15	2/18/19/27/30
64	3/29/2016	2:00 - 2:15	2/18/19/27/30
65	3/30/2016	2:00 - 2:15	2/18/19/27/30
66	3/31/2016	2:00 - 2:15	2/18/19/27/30
67	4/1/2016	2:00 - 2:15	2/18/19/27/30
68	4/2/2016	2:00 - 2:15	2/18/19/27/30
69	4/3/2016	2:00 - 2:15	2/18/19/27/30
70	4/4/2016	2:00 - 2:15	2/18/19/27/30
71	4/5/2016	2:00 - 2:15	2/18/19/27/30
72	4/6/2016	2:00 - 2:15	2/18/19/27/30
73	4/7/2016	2:00 - 2:15	2/18/19/27/30
74	4/8/2016	2:00 - 2:15	2/18/19/27/30
75	4/9/2016	2:00 - 2:15	2/18/19/27/30
76	4/10/2016	2:00 - 2:15	2/18/19/27/30
77	4/11/2016	2:00 - 2:15	2/18/19/27/30
78	4/12/2016	2:00 - 2:15	2/18/19/27/30
79	4/13/2016	2:00 - 2:15	2/18/19/27/30
80	4/14/2016	2:00 - 2:15	2/18/19/27/30
81	4/15/2016	2:00 - 2:15	2/18/19/27/30
82	4/16/2016	2:00 - 2:15	2/18/19/27/30
83	4/17/2016	2:00 - 2:15	2/18/19/27/30
84	4/18/2016	2:00 - 2:15	2/18/19/27/30
85	4/19/2016	2:00 - 2:15	2/18/19/27/30
86	4/20/2016	2:00 - 2:15	2/18/19/27/30
87	4/21/2016	2:00 - 2:15	2/18/19/27/30
88	4/22/2016	2:00 - 2:15	2/18/19/27/30
89	4/23/2016	2:00 - 2:15	2/18/19/27/30
90	4/24/2016	2:00 - 2:15	2/18/19/27/30
91	4/25/2016	2:00 - 2:15	2/18/19/27/30
92	4/26/2016	2:00 - 2:15	2/18/19/27/30
93	4/27/2016	2:00 - 2:15	2/18/19/27/30
94	4/28/2016	2:00 - 2:15	2/18/19/27/30
95	4/29/2016	2:00 - 2:15	2/18/19/27/30
96	4/30/2016	2:00 - 2:15	2/18/19/27/30
97	5/1/2016	2:00 - 2:15	2/18/19/27/30
98	5/2/2016	2:00 - 2:15	2/18/19/27/30
99	5/3/2016	2:00 - 2:15	2/18/19/27/30
100	5/4/2016	2:00 - 2:15	2/18/19/27/30
101	5/5/2016	2:00 - 2:15	2/18/19/27/30
102	5/6/2016	2:00 - 2:15	2/18/19/27/30
103	5/7/2016	2:00 - 2:15	2/18/19/27/30
104	5/8/2016	2:00 - 2:15	2/18/19/27/30
105	5/9/2016	2:00 - 2:15	2/18/19/27/30
106	5/10/2016	2:00 - 2:15	2/18/19/27/30
107	5/11/2016	2:00 - 2:15	2/18/19/27/30
108	5/12/2016	2:00 - 2:15	2/18/19/27/30
109	5/13/2016	2:00 - 2:15	2/18/19/27/30
110	5/14/2016	2:00 - 2:15	2/18/19/27/30
111	5/15/2016	2:00 - 2:15	2/18/19/27/30
112	5/16/2016	2:00 - 2:15	2/18/19/27/30
113	5/17/2016	2:00 - 2:15	2/18/19/27/30
114	5/18/2016	2:00 - 2:15	2/18/19/27/30
115	5/19/2016	2:00 - 2:15	2/18/19/27/30
116	5/20/2016	2:00 - 2:15	2/18/19/27/30
117	5/21/2016	2:00 - 2:15	2/18/19/27/30
118	5/22/2016	2:00 - 2:15	2/18/19/27/30
119	5/23/2016	2:00 - 2:15	2/18/19/27/30
120	5/24/2016	2:00 - 2:15	2/18/19/27/30
121	5/25/2016	2:00 - 2:15	2/18/19/27/30
122	5/26/2016	2:00 - 2:15	2/18/19/27/30
123	5/27/2016	2:00 - 2:15	2/18/19/27/30
124	5/28/2016	2:00 - 2:15	2/18/19/27/30
125	5/29/2016	2:00 - 2:15	2/18/19/27/30
126	5/30/2016	2:00 - 2:15	2/18/19/27/30
127	5/31/2016	2:00 - 2:15	2/18/19/27/30
128	6/1/2016	2:00 - 2:15	2/18/19/27/30
129	6/2/2016	2:00 - 2:15	2/18/19/27/30
130	6/3/2016	2:00 - 2:15	2/18/19/27/30
131	6/4/2016	2:00 - 2:15	2/18/19/27/30
132	6/5/2016	2:00 - 2:15	2/18/19/27/30
133	6/6/2016	2:00 - 2:15	2/18/19/27/30
134	6/7/2016	2:00 - 2:15	2/18/19/27/30
135	6/8/2016	2:00 - 2:15	2/18/19/27/30
136	6/9/2016	2:00 - 2:15	2/18/19/27/30
137	6/10/2016	2:00 - 2:15	2/18/19/27/30
138	6/11/2016	2:00 - 2:15	2/18/19/27/30
139	6/12/2016	2:00 - 2:15	2/18/19/27/30
140	6/13/2016	2:00 - 2:15	2/18/19/27/30
141	6/14/2016	2:00 - 2:15	2/18/19/27/30
142	6/15/2016	2:00 - 2:15	2/18/19/27/30
143	6/16/2016	2:00 - 2:15	2/18/19/27/30
144	6/17/2016	2:00 - 2:15	2/18/19/27/30
145	6/18/2016	2:00 - 2:15	2/18/19/27/30
146	6/19/2016	2:00 - 2:15	2/18/19/27/30
147	6/20/2016	2:00 - 2:15	2/18/19/27/30
148	6/21/2016	2:00 - 2:15	2/18/19/27/30
149	6/22/2016	2:00 - 2:15	2/18/19/27/30
150	6/23/2016	2:00 - 2:15	2/18/19/27/30
151	6/24/2016	2:00 - 2:15	2/18/19/27/30
152	6/25/2016	2:00 - 2:15	2/18/19/27/30
153	6/26/2016	2:00 - 2:15	2/18/19/27/30
154	6/27/2016	2:00 - 2:15	2/18/19/27/30
155	6/28/2016	2:00 - 2:15	2/18/19/27/30
156	6/29/2016	2:00 - 2:15	2/18/19/27/30
157	6/30/2016	2:00 - 2:15	2/18/19/27/30
158	7/1/2016	2:00 - 2:15	2/18/19/27/30
159	7/2/2016	2:00 - 2:15	2/18/19/27/30
160	7/3/2016	2:00 - 2:15	2/18/19/27/30
161	7/4/2016	2:00 - 2:15	2/18/19/27/30
162	7/5/2016	2:00 - 2:15	2/18/19/27/30
163	7/6/2016	2:00 - 2:15	2/18/19/27/30
164	7/7/2016	2:00 - 2:15	2/18/19/27/30
165	7/8/2016	2:00 - 2:15	2/18/19/27/30
166	7/9/2016	2:00 - 2:15	2/18/19/27/30
167	7/10/2016	2:00 - 2:15	2/18/19/27/30
168	7/11/2016	2:00 - 2:15	2/18/19/27/30
169	7/12/2016	2:00 - 2:15	2/18/19/27/30
170	7/13/2016	2:00 - 2:15	2/18/19/27/30
171	7/14/2016	2:00 - 2:15	2/18/19/27/30
172	7/15/2016	2:00 - 2:15	2/18/19/27/30
173	7/16/2016	2:00 - 2:15	2/18/19/27/30
174	7/17/2016	2:00 - 2:15	2/18/19/27/30
175	7/18/2016	2:00 - 2:15	2/18/19/27/30
176	7/19/2016	2:00 - 2:15	2/18/19/27/30
177	7/20/2016	2:00 - 2:15	2/18/19/27/30
178	7/21/2016	2:00 - 2:15	2/18/19/27/30
179	7/22/2016	2:00 - 2:15	2/18/19/27/30
180	7/23/2016	2:00 - 2:15	2/18/19/27/30
181	7/24/2016	2:00 - 2:15	2/18/19/27/30
182	7/25/2016	2:00 - 2:15	2/18/19/27/30
183	7/26/2016	2:00 - 2:15	2/18/19/27/30
184	7/27/2016	2:00 - 2:15	2/18/19/27/30
185	7/28/2016	2:00 - 2:15	2/18/19/27/30
186	7/29/2016	2:00 - 2:15	2/18/19/27/30
187	7/30/2016	2:00 - 2:15	2/18/19/27/30
188	7/31/2016	2:00 - 2:15	2/18/19/27/30
189	8/1/2016	2:00 - 2:15	2/18/19/27/30
190	8/2/2016	2:00 - 2:15	2/18/19/27/30
191	8/3/2016	2:00 - 2:15	2/18/19/27/30
192	8/4/2016	2:00 - 2:15	2/18/19/27/30
193	8/5/2016	2:00 - 2:15	2/18/19/27/30
194	8/6/2016	2:00 - 2:15	2/18/19/27/30
195	8/7/2016	2:00 - 2:15	2/18/19/27/30
196	8/8/2016	2:00 - 2:15	2/18/19/27/30
197	8/9/2016	2:00 - 2:15	2/18/19/27/30
198	8/10/2016	2:00 - 2:15	2/18/19/27/30
199	8/11/2016	2:00 - 2:15	2/18/19/27/30
200	8/12/2016	2:00 - 2:15	2/18/19/27/30
201	8/13/2016	2:00 - 2:15	2/18/19/27/30
202	8/14/2016	2:00 - 2:15	2/18/19/27/30
203	8/15/2016	2:00 - 2:15	2/18/19/27/30
204	8/16/2016	2:00 - 2:15	2/18/19/27/30
205	8/17/2016	2:00 - 2:15	2/18/19/27/30
206	8/18/2016	2:00 - 2:15	2/18/19/27/30
207	8/19/2016	2:00 - 2:15	2/18/19/27/30
208	8/20/2016	2:00 - 2:15	2/18/19/27/30
209	8/21/2016	2:00 - 2:15	2/18/19/27/30
210	8/22/2016	2:00 - 2:15	2/18/19/27/30
211	8/23/2016	2:00 - 2:15	2/18/19/27/30
212	8/24/2016	2:00 - 2:15	2/18/19/27/30



NOTE: THIS IS A SUGGESTED LAYOUT ONLY.
EXACT MONITOR AND MICROPHONE SETUP PER
AND AS NEEDED BY EDDIE PALMIERI

[illegible]

EXT RIVER AVE.
SKATE PARK

DRAWING TITLE |

STAGE PLAN

SET LOCATION |

**RIVER AVE.
SKATE PARK**

E157TH & RIVER AVE. BRONX

APPROVED	DRAWN BY
----------	----------

	FMS
--	-----

SET NUMBER	SCALE
5025	AS NOTED

5025	AS NOTED
PLATE NUMBER 1	

02

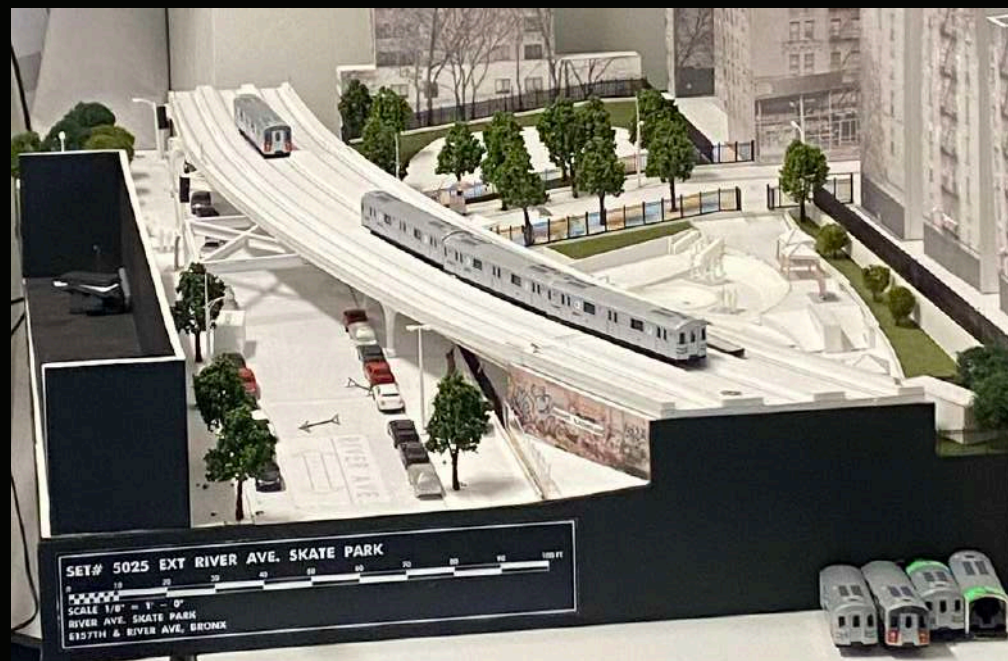
REF: 4/12/24

STAGE PLAN

PUERTO RICAN DAY PARADE - RIVER AVE SKATE PARK - BRONX



MURAL & MOCK UP BY BG183



PUERTO RICAN DAY PARADE - RIVER AVE SKATE PARK - BRONX

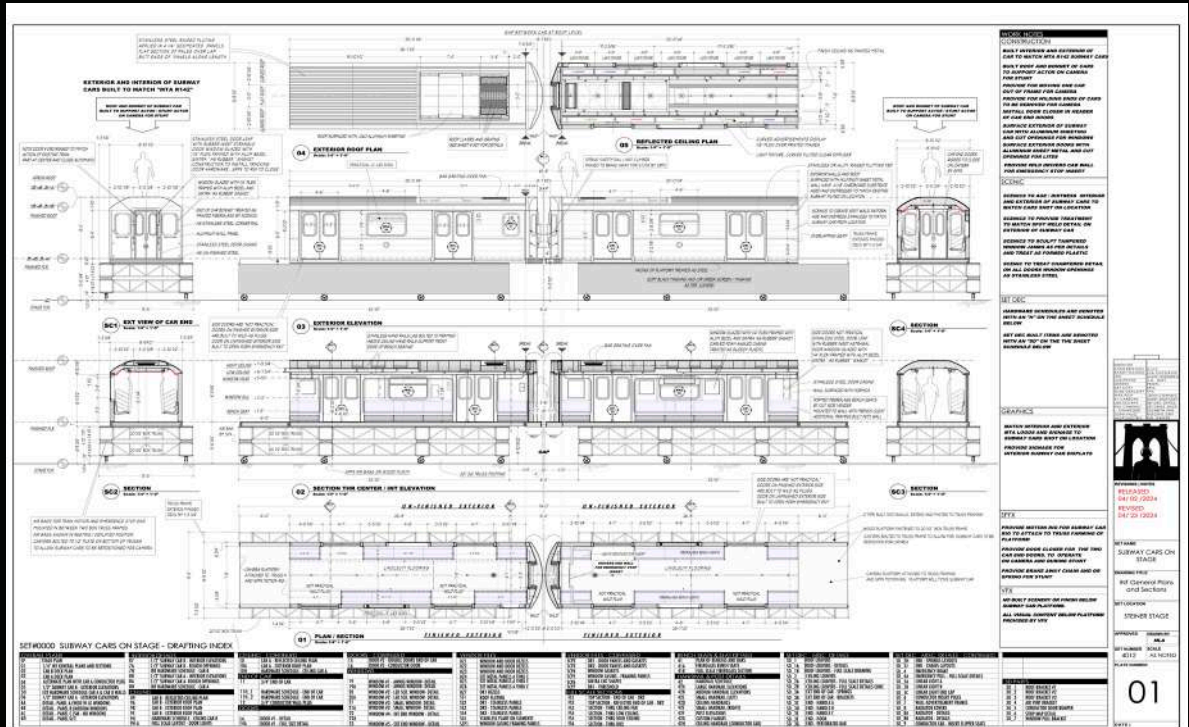


MURAL PHOTO & MOCK UP

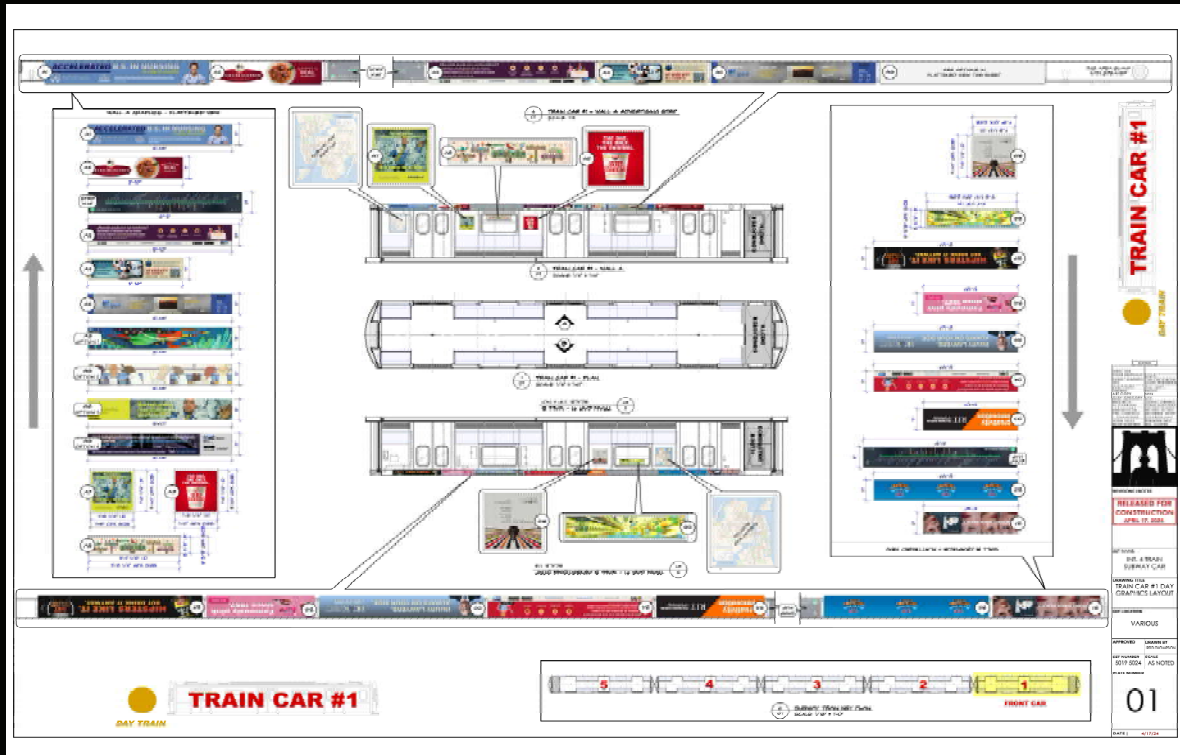
PUERTO RICAN DAY PARADE - RIVER AVE SKATE PARK - BRONX



PUERTO RICAN DAY PARADE - RIVER AVE SKATE PARK - BRONX







6 TRAIN - STAGE





CONCEPT ART



BROOKLYN BRIDGE - BROOKLYN



ROSA'S APARTMENT - BRONX



ROSA'S APARTMENT - BRONX



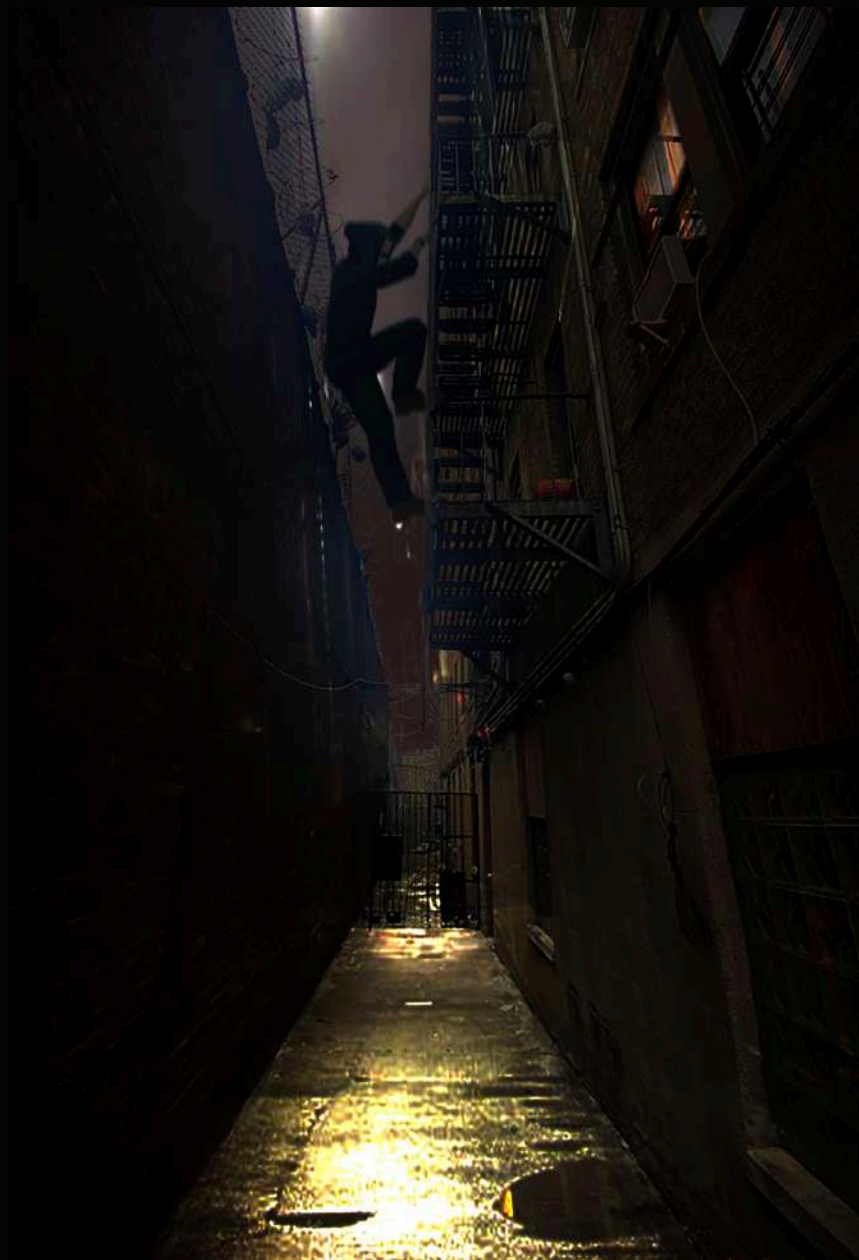
ROSA'S APARTMENT - BRONX





CONCEPT ART

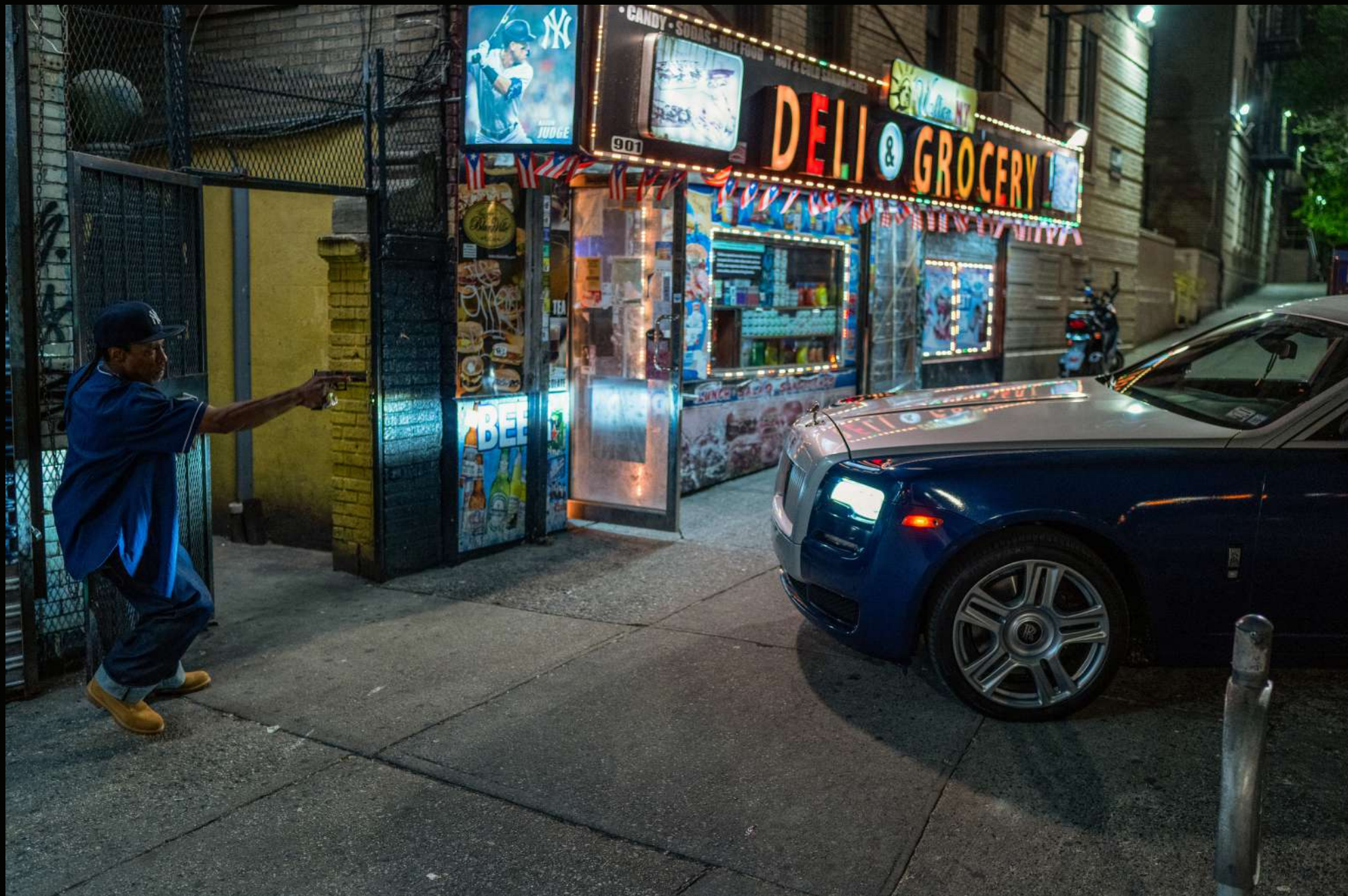
BRONX RECORDING STUDIO - STAGE



CONCEPT ART



BRONX RECORDING STUDIO - STAGE



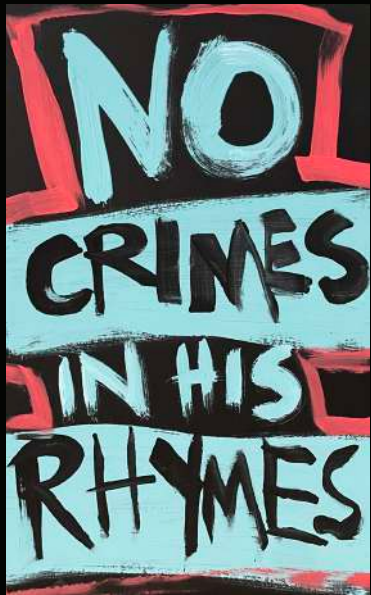
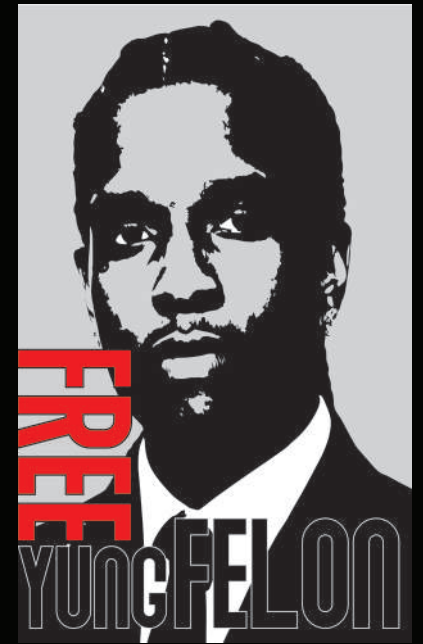
BRONX RECORDING STUDIO - BRONX



MURAL & MOCK UP BY ANDRE TRENIER



BRONX RECORDING STUDIO - BRONX





BRONX COUNTY COURTHOUSE - HOLDING CELL - STAGE



BRONX COUNTY COURTHOUSE - BRONX