

**Silver Bear**  
**75** International  
 Filmfestspiele  
 Berlin  
 Best Supporting Performance  
 Andrew Scott

[illegible]

Filmed entirely in Dublin , Ireland.  
Production Designer : Susie Cullen







































The image displays a set of architectural drawings for a clockroom, identified as 'BLUE MOON' and 'DET - GARDEN'S RESTAURANT'. The drawings include a floor plan, five sections (A-A, B-B, C-C, D-D, E-E), and a detail of a plant on a square.

**Floor Plan:** Shows the layout of the clockroom with dimensions. Key features include a 'DROPPED CEILING' with a 'HATCH' and 'ARCHITRAVE', a '2" X 4" PLANT ON SQUARE', and a '2" X 4" ARCHITRAVE'. The plan is oriented with 'N' (North) at the top.

**Section A-A:** A vertical section showing the '2" X 4" PLANT ON SQUARE' and 'ARCHITRAVE' detail. It includes dimensions for the '2" X 4" PLANT ON SQUARE' and 'ARCHITRAVE'.

**Section B-B:** A vertical section showing the '2" X 4" PLANT ON SQUARE' and 'ARCHITRAVE' detail. It includes dimensions for the '2" X 4" PLANT ON SQUARE' and 'ARCHITRAVE'.

**Section C-C:** A vertical section showing the '2" X 4" PLANT ON SQUARE' and 'ARCHITRAVE' detail. It includes dimensions for the '2" X 4" PLANT ON SQUARE' and 'ARCHITRAVE'.

**Section D-D:** A vertical section showing the '2" X 4" PLANT ON SQUARE' and 'ARCHITRAVE' detail. It includes dimensions for the '2" X 4" PLANT ON SQUARE' and 'ARCHITRAVE'.

**Section E-E:** A vertical section showing the '2" X 4" PLANT ON SQUARE' and 'ARCHITRAVE' detail. It includes dimensions for the '2" X 4" PLANT ON SQUARE' and 'ARCHITRAVE'.

**Detail:** A detail of the '2" X 4" PLANT ON SQUARE' and 'ARCHITRAVE' showing the '2" X 4" PLANT ON SQUARE' and 'ARCHITRAVE'.

**Revisions:** A table of revisions is located in the bottom right corner:

NO.	REVISION	DATE
1	REVISED 28.5.24.	28.5.24.

**Project Information:**

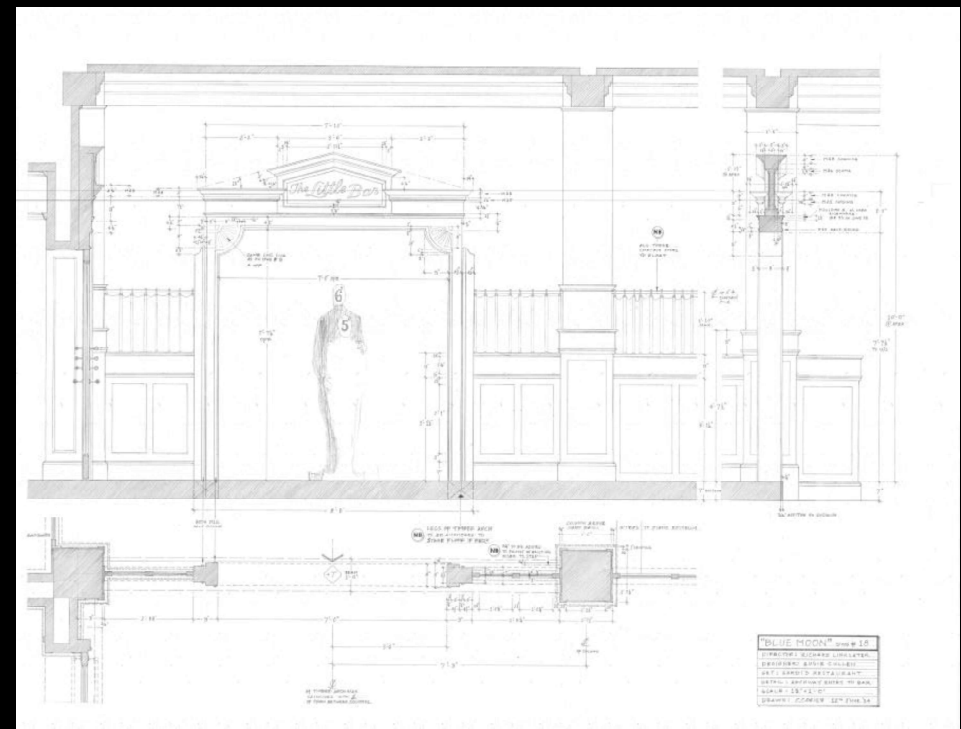
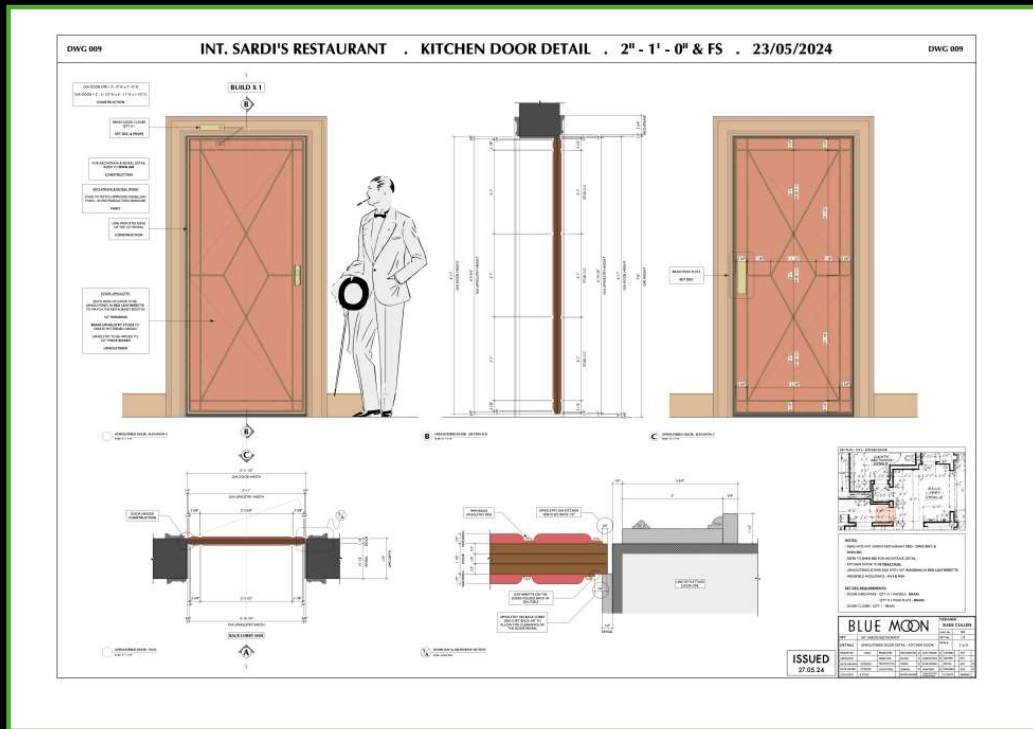
- PROJECT: BLUE MOON
- DET - GARDEN'S RESTAURANT
- SCALE: 1/2" = 1'
- DATE ISSUED: 28 MAY 24
- DESK: No. 11

BLUE MOON	
SET : SARDI'S RESTAURANT	
DETAIL : CLOAKROOM	
SCALE : 1/2" = 1'0"	
DATE ISSUED : 28 MAY 24	
DRAWING NO.	11

DWG\_004



<h1>BLUE MOON</h1>					<b>DESIGNER</b> <b>SUSIE CULLER</b>	
<b>SET</b> <b>INT. SANDY'S RESTAURANT</b>					<b>REP. NO.</b> <b>054</b>	
<b>DETAILS</b> <b>BAR</b>					<b>SCALE</b> <b>12" = 1' &amp; 1"</b>	
<b>ITEM NO.</b>	<b>AUC</b>	<b>PRELIM</b>	<b>EXERCISE</b>	<b>CON. POWER</b>	<b>COPYING</b>	<b>DATE</b>
<b>APPROVED</b>	<b>DIRECTION</b>	<b>BUILDER</b>	<b>CONTRACTOR</b>	<b>GATEWAY</b>	<b>SEA</b>	<b>ART</b>
<b>DATE ISSUED</b>	<b>DESIGNER</b>	<b>PRODUCTION</b>	<b>PLANS</b>	<b>PLATEWORK</b>	<b>HOTEL</b>	<b>ART</b>
<b>DATE ISSUED</b>	<b>LOCATION</b>	<b>ENGINES</b>	<b>PRINTERS</b>	<b>BOOKERS</b>	<b>SPR</b>	<b>SPR</b>
<b>LOCATION</b>	<b>STAGE</b>	<b>MANAGER</b>	<b>PRODUCTION</b>	<b>STUDIO</b>	<b>STUDIO</b>	<b>STUDIO</b>



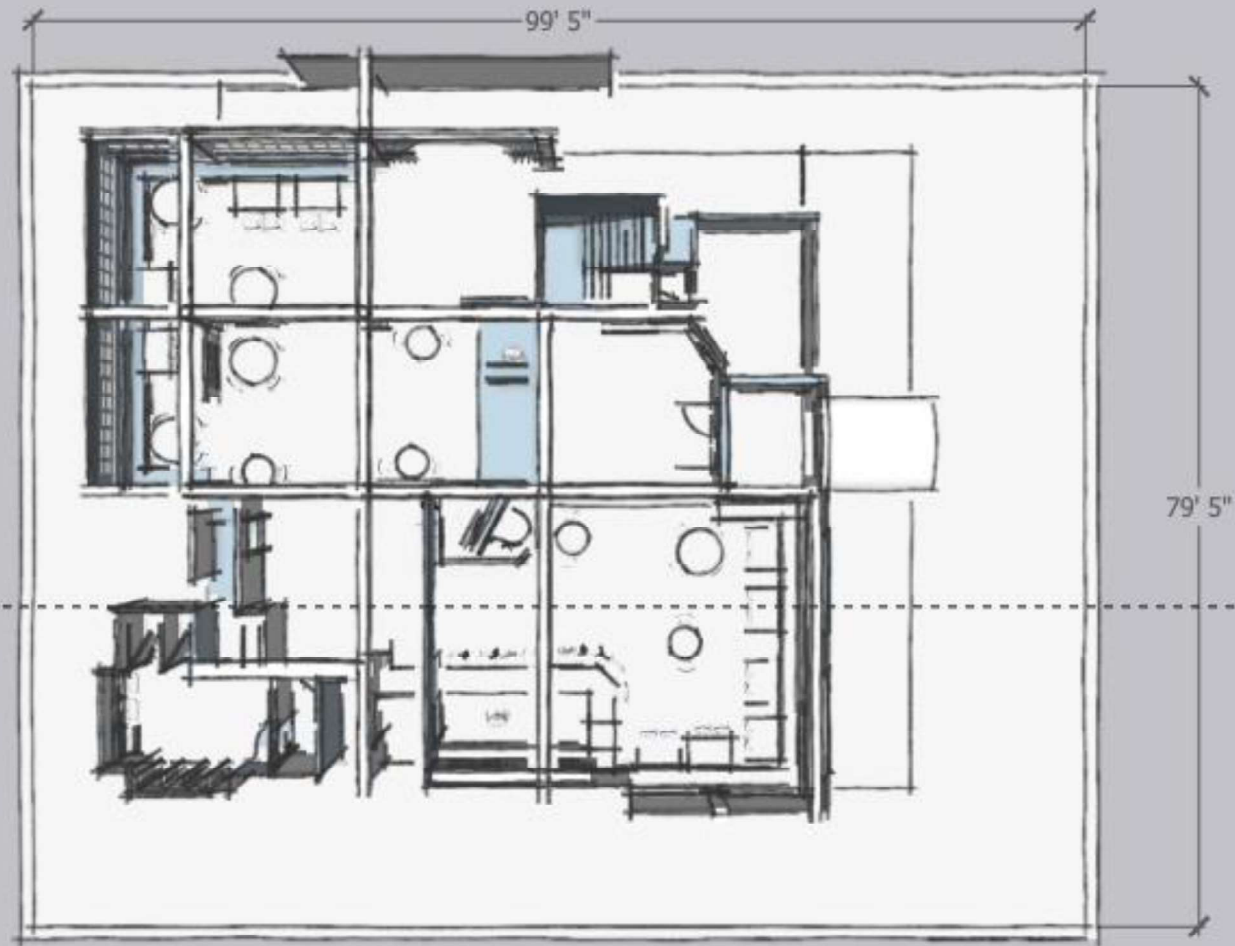
Set Designers produced drawings digitally and by traditional hand draughting.

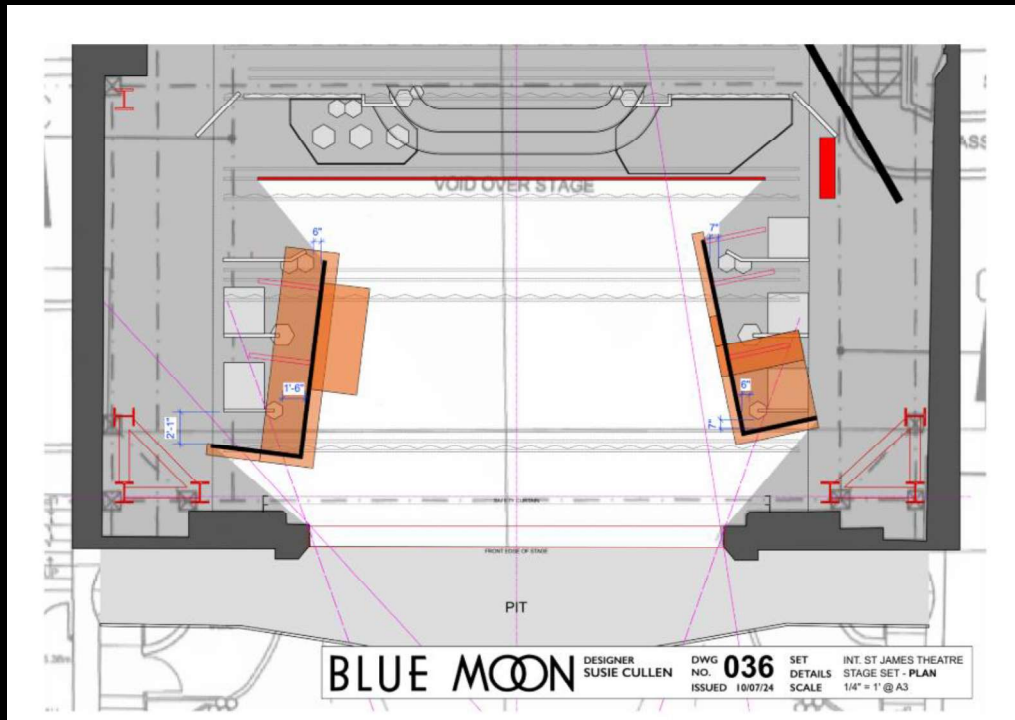
Traditional White Card models and digital models were used to communicate with the Director and DOP as they did not arrive in Ireland until 3 weeks prior to shoot.

Richard Linklater, the Cast and the Director of Photography rehearsed intensely on the set for 2 weeks prior to principal photography.

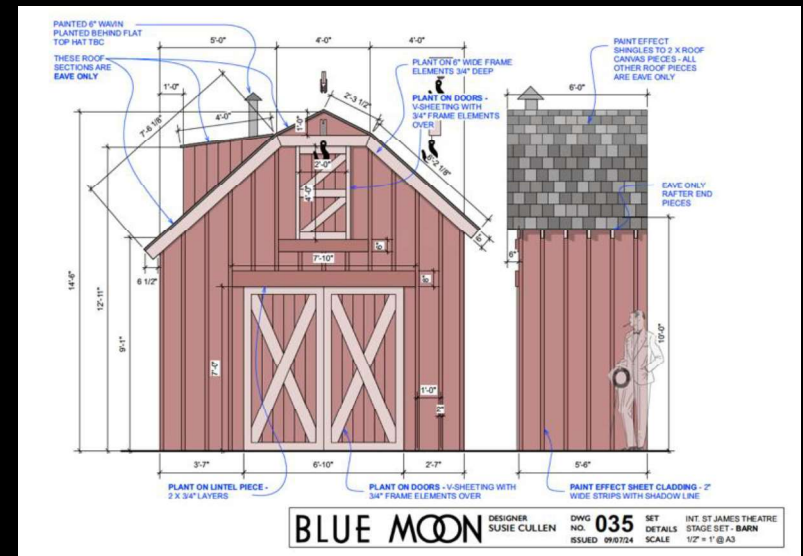


MP4 animation through preliminary Digital model





The Oklahoma Theatre set was shot in the Gaiety theatre Dublin. A show was playing at the time so we had to squeeze our set in front for a day to shoot and then strike without having any impacting the existing stage set behind ours.



Production Designer: Susie Cullen- ADGI, BAFTA

SUPERVISING ART DIRECTOR :AISLING O'CALLAGHAN - ADGI

ART DIRECTOR : BRYAN TORMEY- ADGI

ASSISTANT ART DIRECTOR/ Digital Set Designer: ANDREW O DONOGHUE -ADGI

STANDBY ART DIRECTOR: ALICE MURPHY- ADGI

GRAPHIC DESIGNER :PATRICIA DOUGLAS- ADGI

ASSIST GRAPHIC :DESIGNER CHRIS MERTON- ADGI

ART DIRECTOR :COLMAN CORISH- ADGI

Illustrator: Alan Lambert - ADGI

Set Decorator: Kevin Downey- SDGI