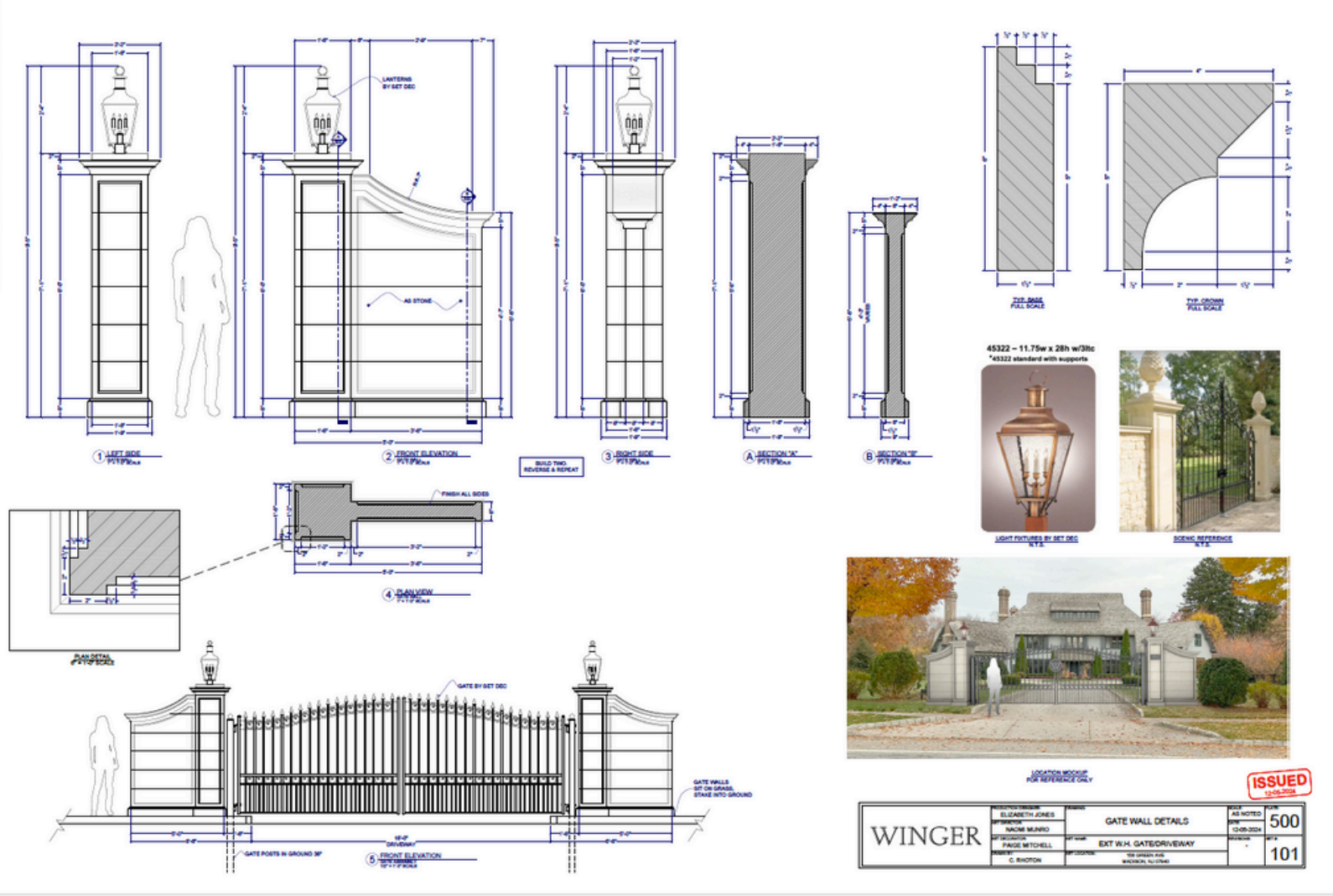


The majority of “The Housemaid” takes place in one highly put together home where everything appears to be perfect. Of course all is not as it seems. As the story progresses, quiet luxury gives way to sinister elements— something is just not right. The design challenge was to find that balance and give the viewer a hint of what’s to come.



THE HOUSEMAID

THE WINCHESTER HOUSE - EXTERIOR



THE WINCHESTER HOUSE - LIVING ROOM

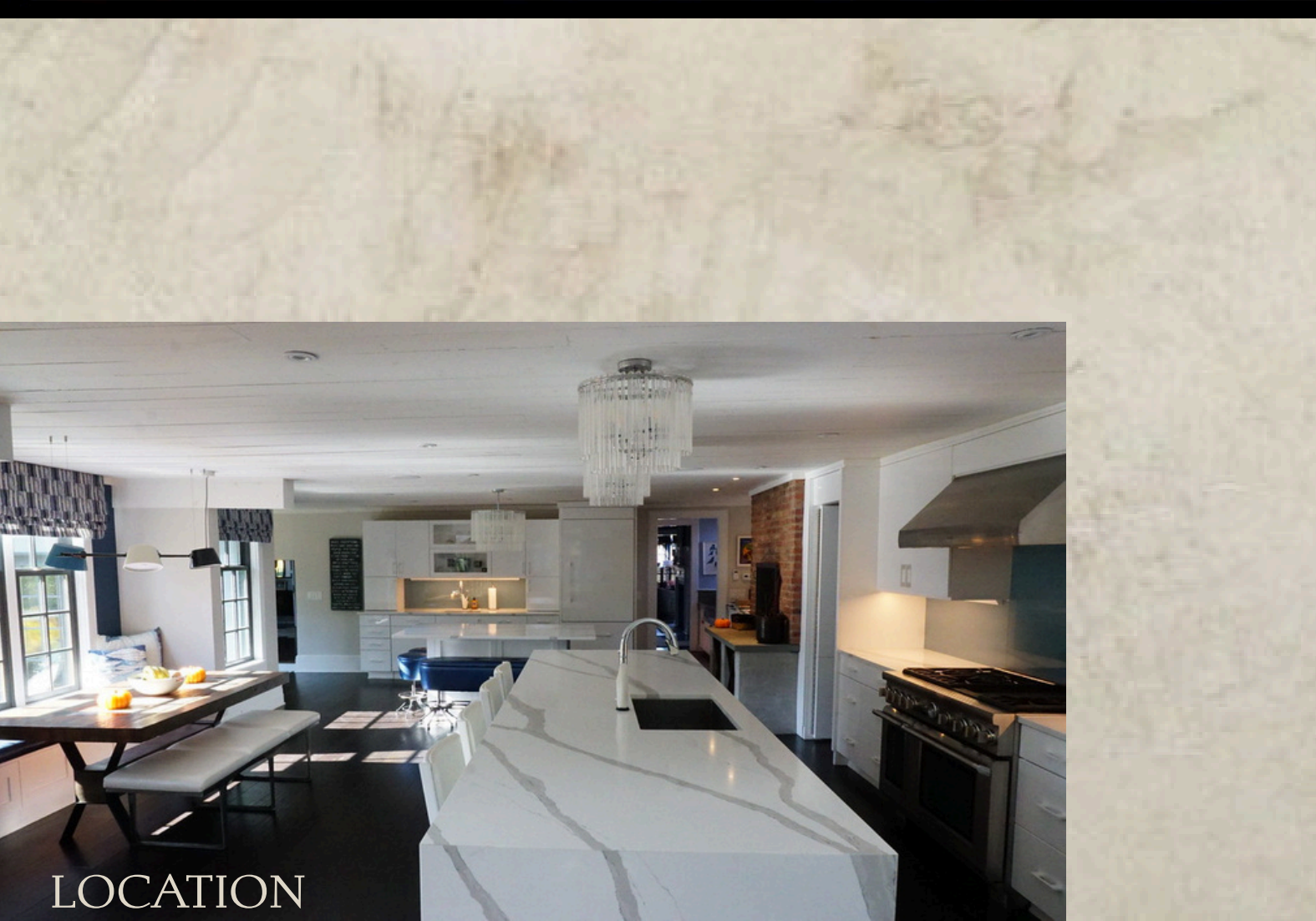


LOCATION



THE WINCHESTER HOUSE - LIVING ROOM

FILM STILL



LOCATION



THE WINCHESTER HOUSE - KITCHEN





THE WINCHESTER HOUSE - FORMAL LIVING ROOM

THE WINCHESTER HOUSE - FORMAL LIVING ROOM



THE WINCHESTER HOUSE - SUNROOM



THE WINCHESTER HOUSE - SUNROOM



THE WINCHESTER HOUSE - DINNING ROOM



THE WINCHESTER HOUSE - LIBRARY



THE WINCHESTER HOUSE - SCREENING ROOM



THE WINCHESTER HOUSE - FOYER



THE WINCHESTER HOUSE - SITTING ROOM



THE WINCHESTER HOUSE - SITTING ROOM



THE WINCHESTER HOUSE - CECE'S PLAYROOM



THE WINCHESTER HOUSE - CECE'S BEDROOM



THE WINCHESTER DOLLHOUSE



FILM STILL



FILM STILL



WINGER :: FABRICATOR: LATE AARNA :: December 6, 2024 ::

1 :: DOLLHOUSE FABRICATION ::

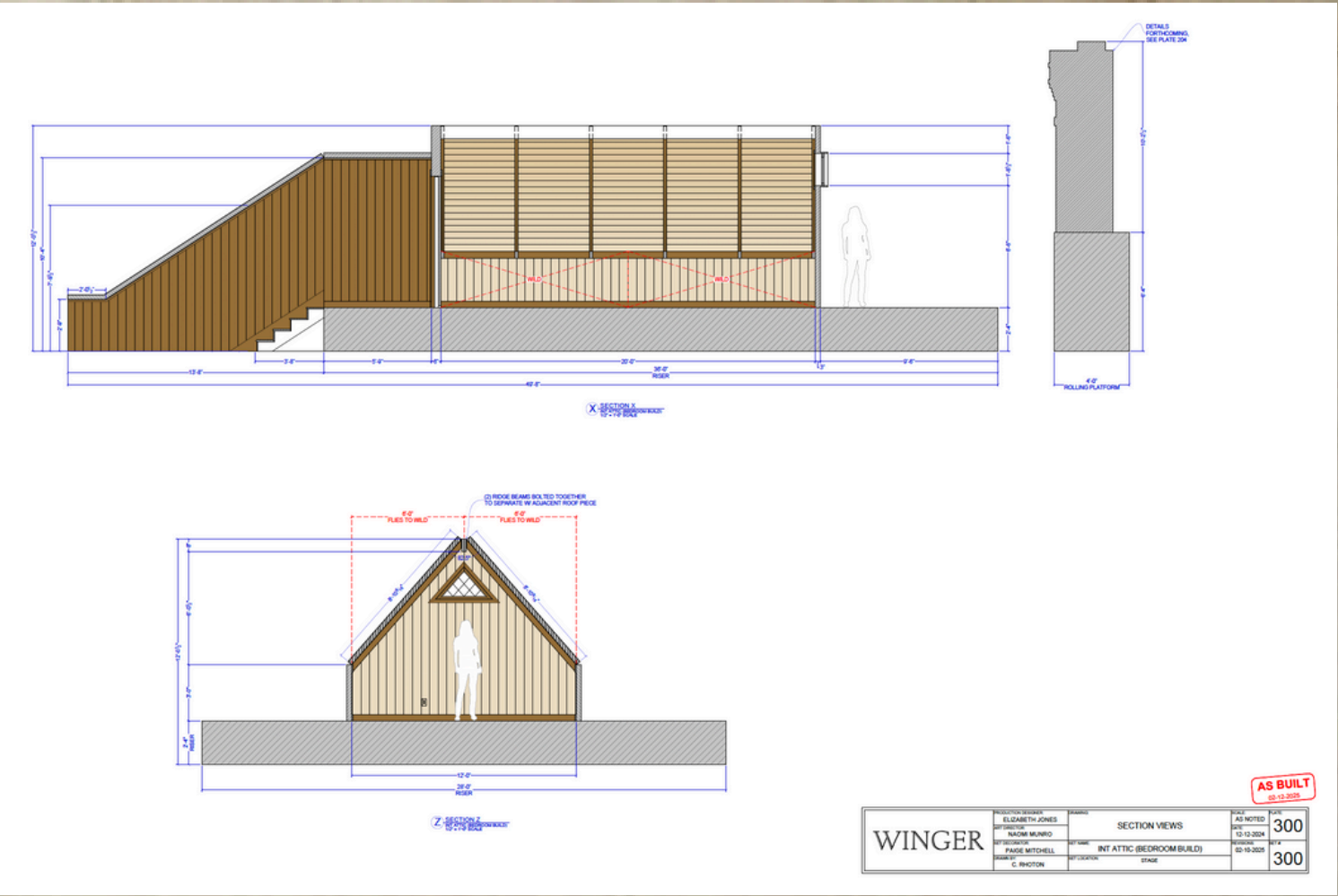
THE WINCHESTER HOUSE - ATTIC BEDROOM



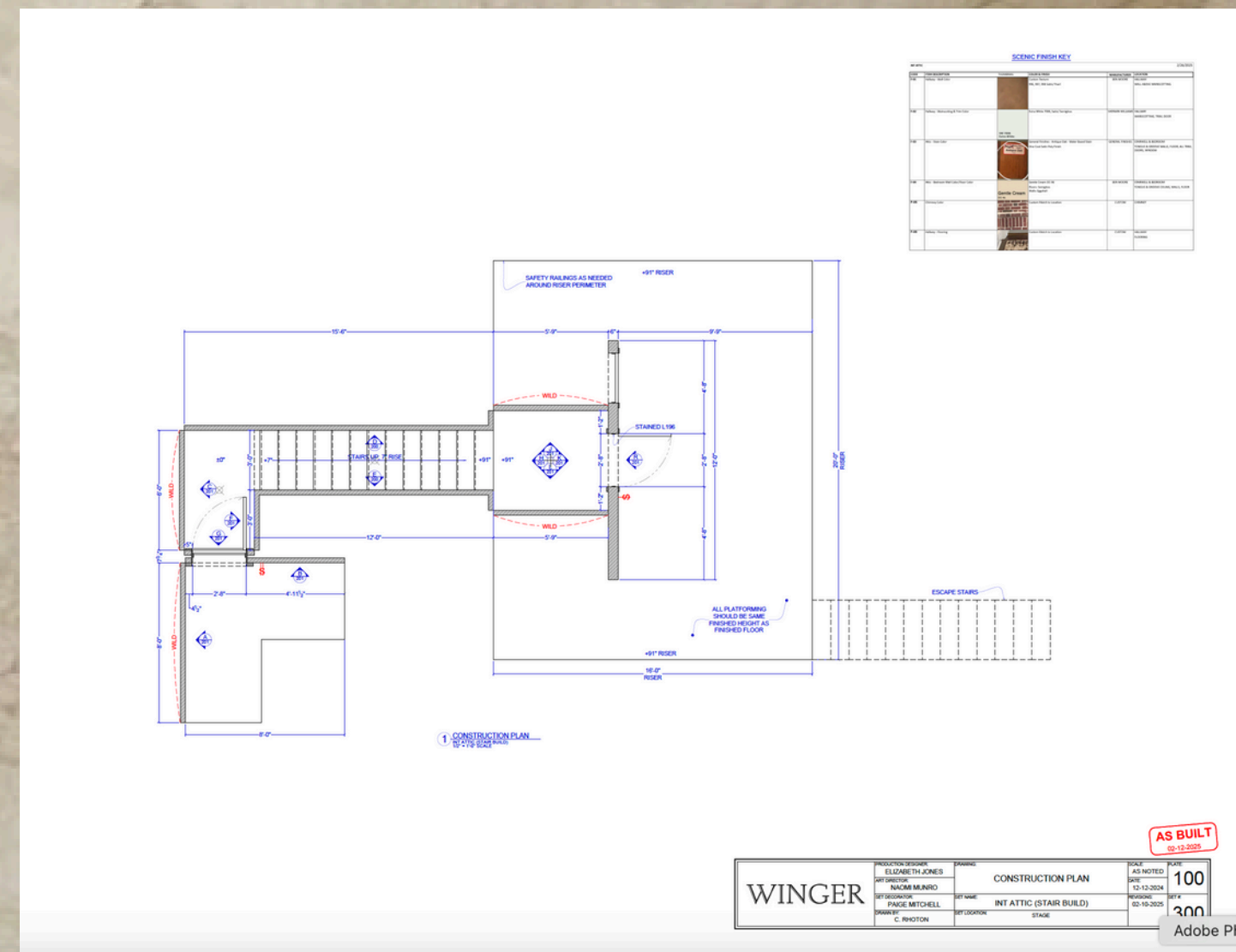
FILM STILL



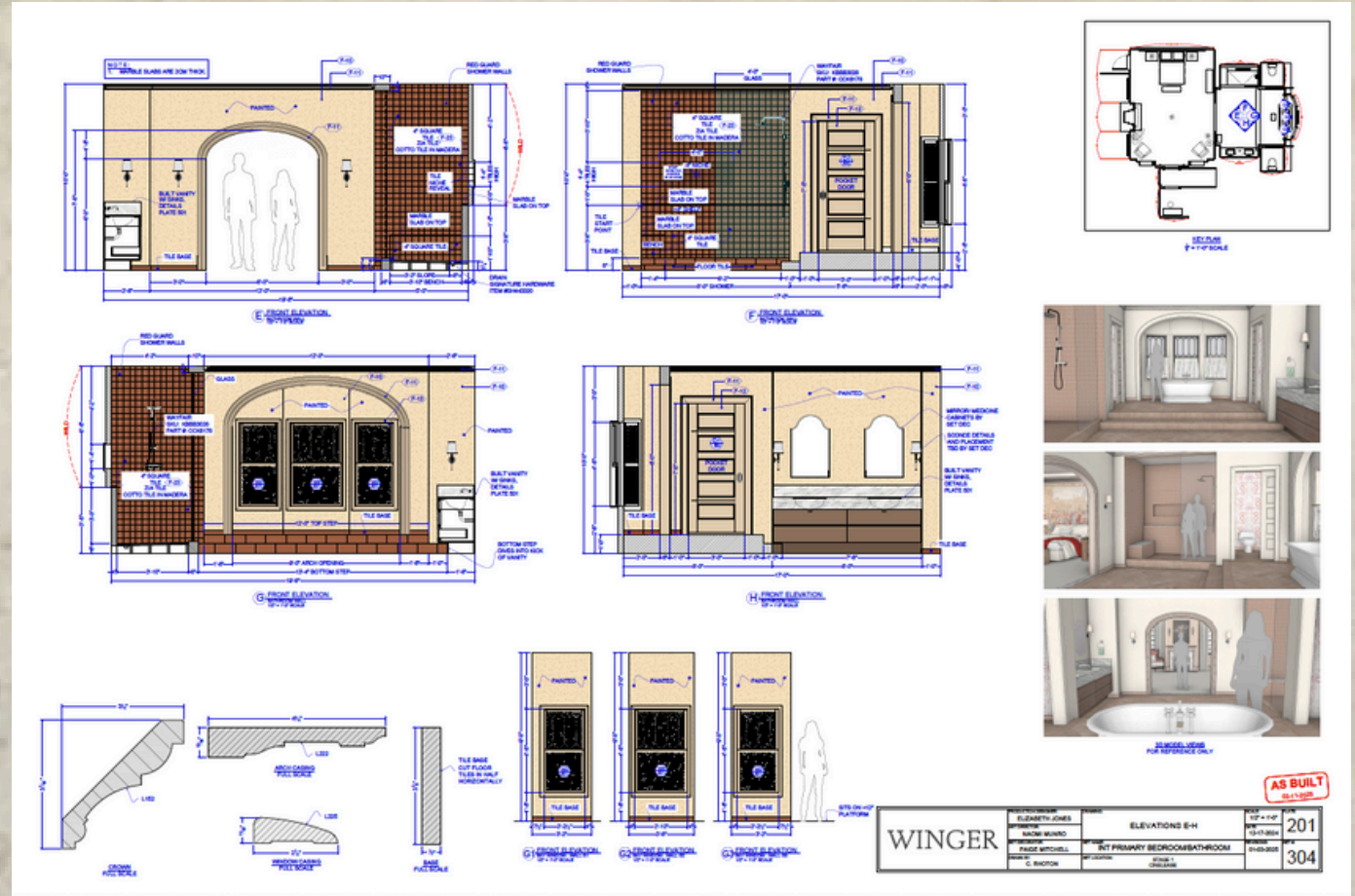
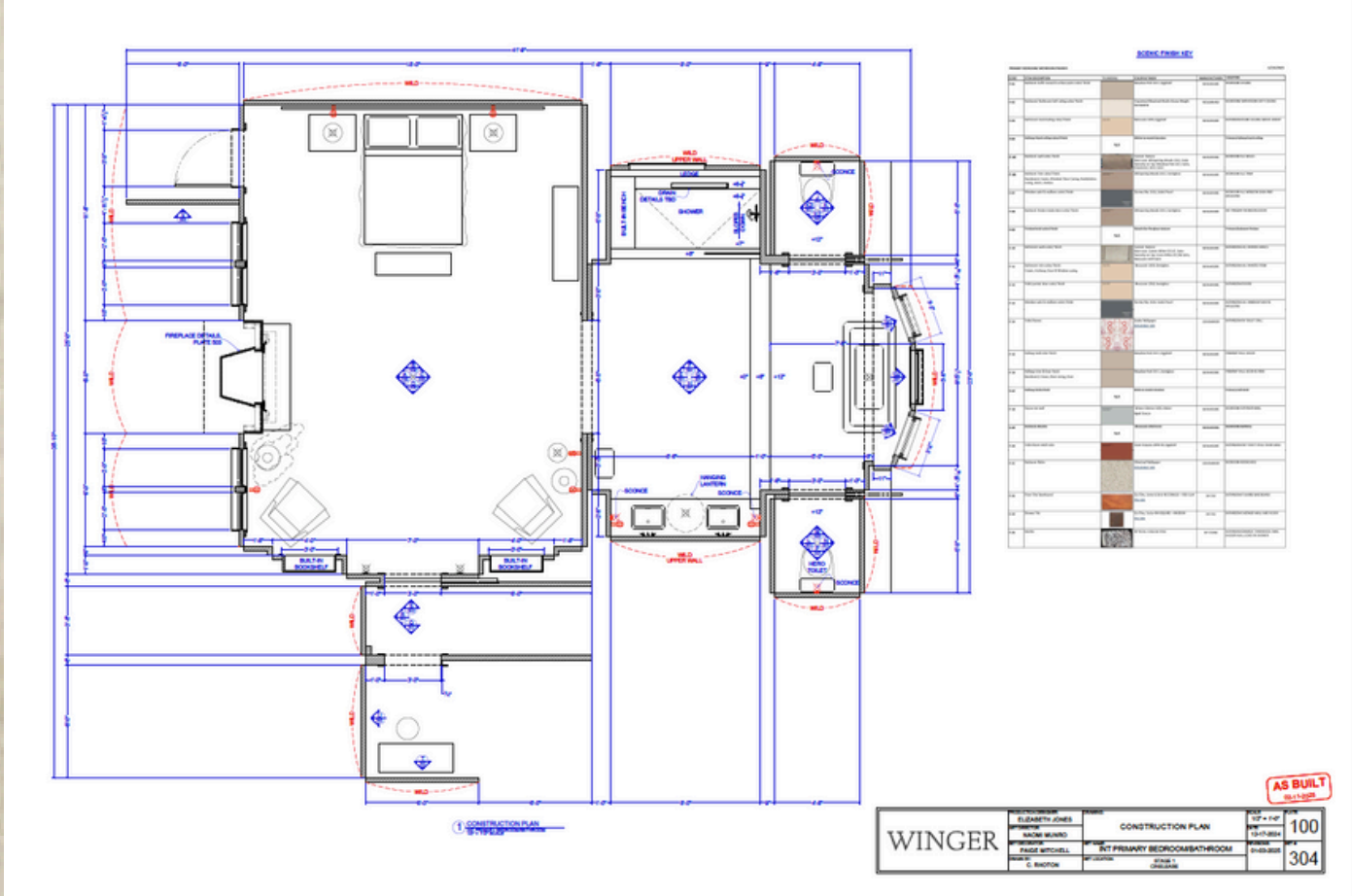
FILM STILL



THE WINCHESTER HOUSE - ATTIC BEDROOM



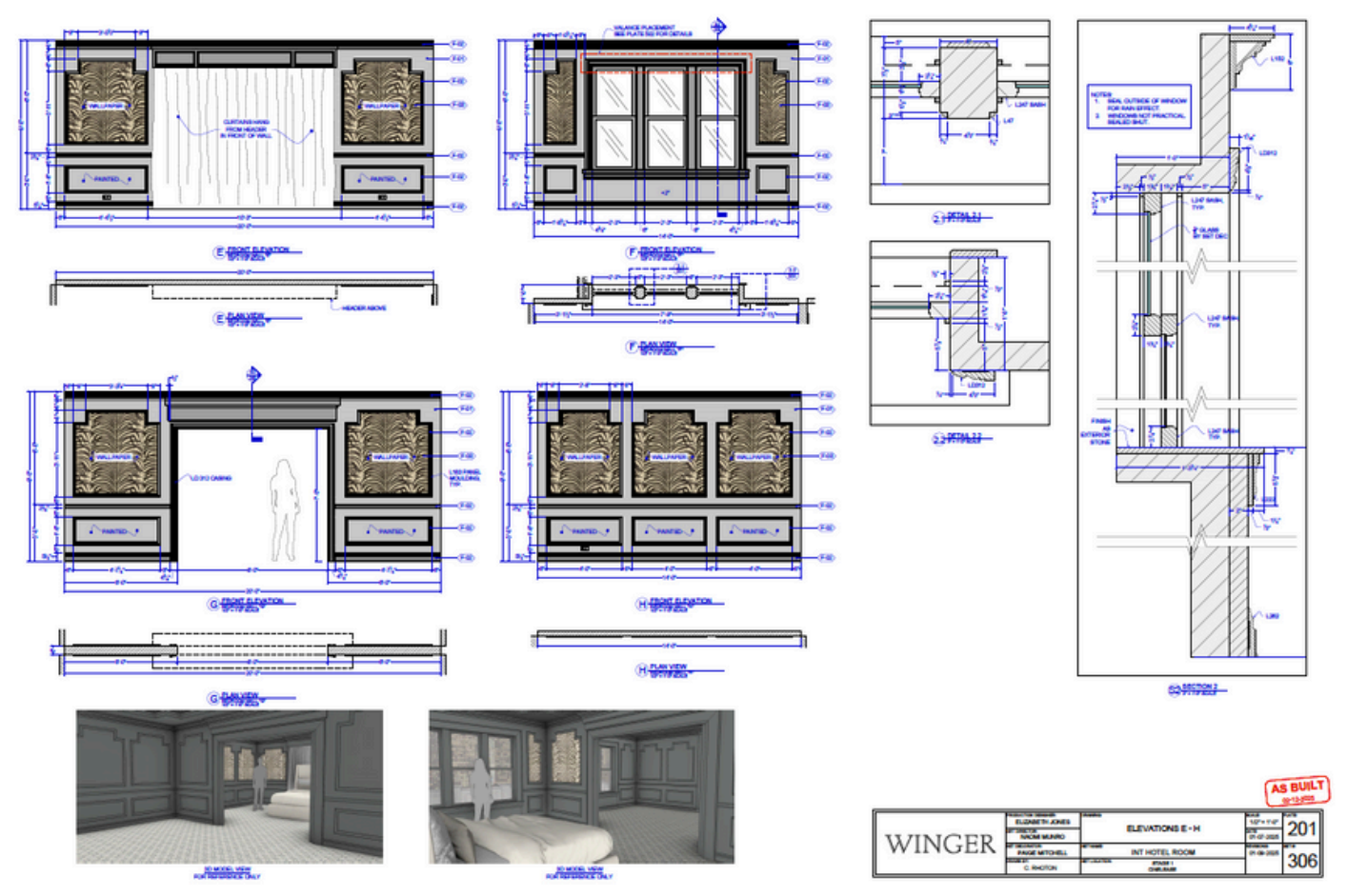
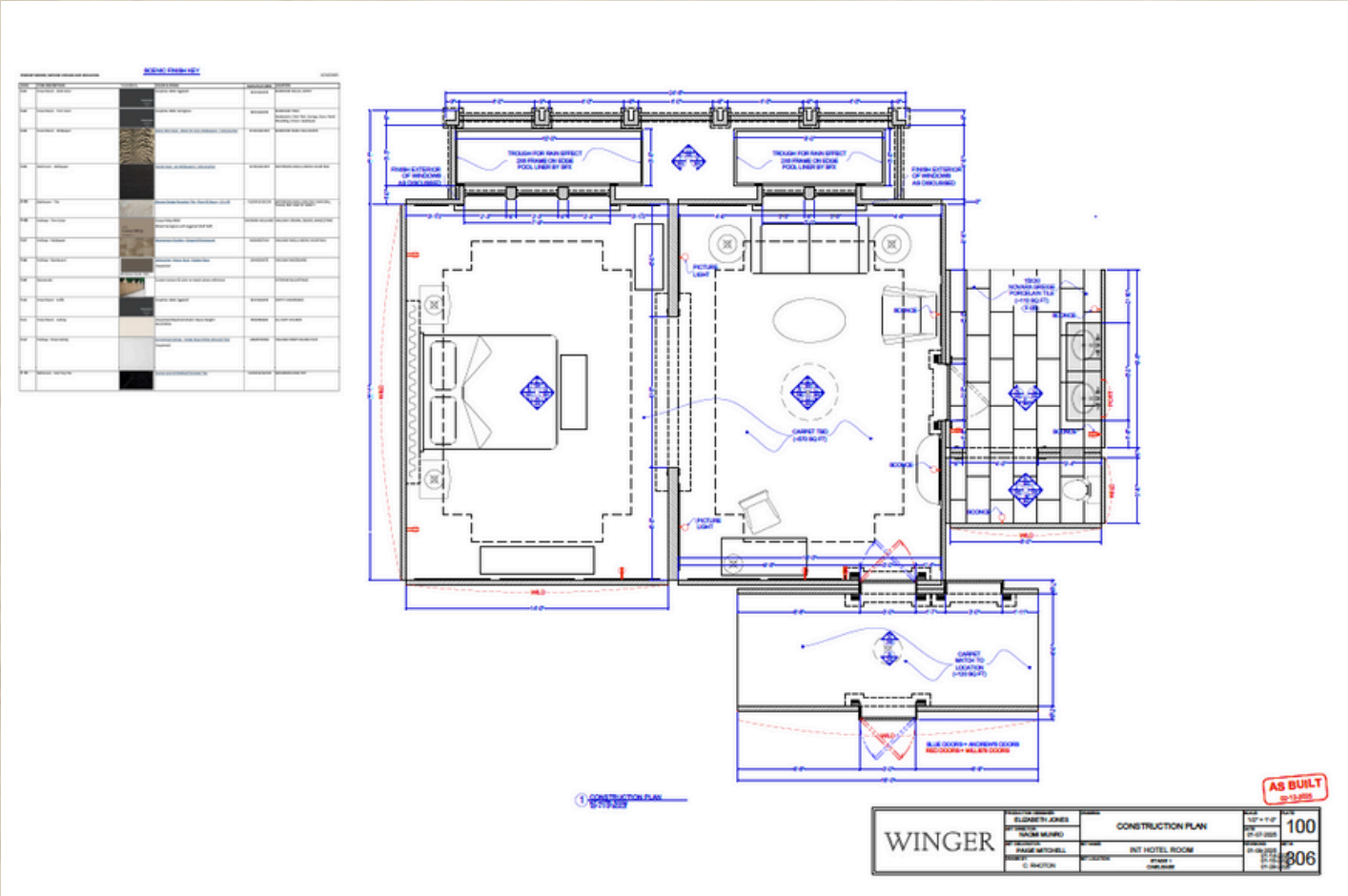
THE WINCHESTER HOUSE - MASTER BEDROOM AND BATH



THE WINCHESTER HOUSE - MASTER BEDROOM AND BATH



NEW YORK BOUTIQUE HOTEL



FILM STILL



THE WINCHESTER BUTLER PANTRY AND CHINA





PRODUCTION DESIGNER ELIZABETH J. JONES

ART DIRECTOR NAOMI MUNRO

ASSISTANT ART DIRECTOR CHRIS RHOTON

GRAPHIC DESIGNER MATTHEW VIDALIS

SET DECORATOR PAIGE MITCHELL

ART COORDINATOR EMILY CAPP