



# F1<sup>®</sup> THE MOVIE

**BEN MUNRO + MARK TILDESLEY**  
PRODUCTION DESIGNERS

**ANDREW McCARTHY + VERONIQUE MELERY**  
SET DECORATORS







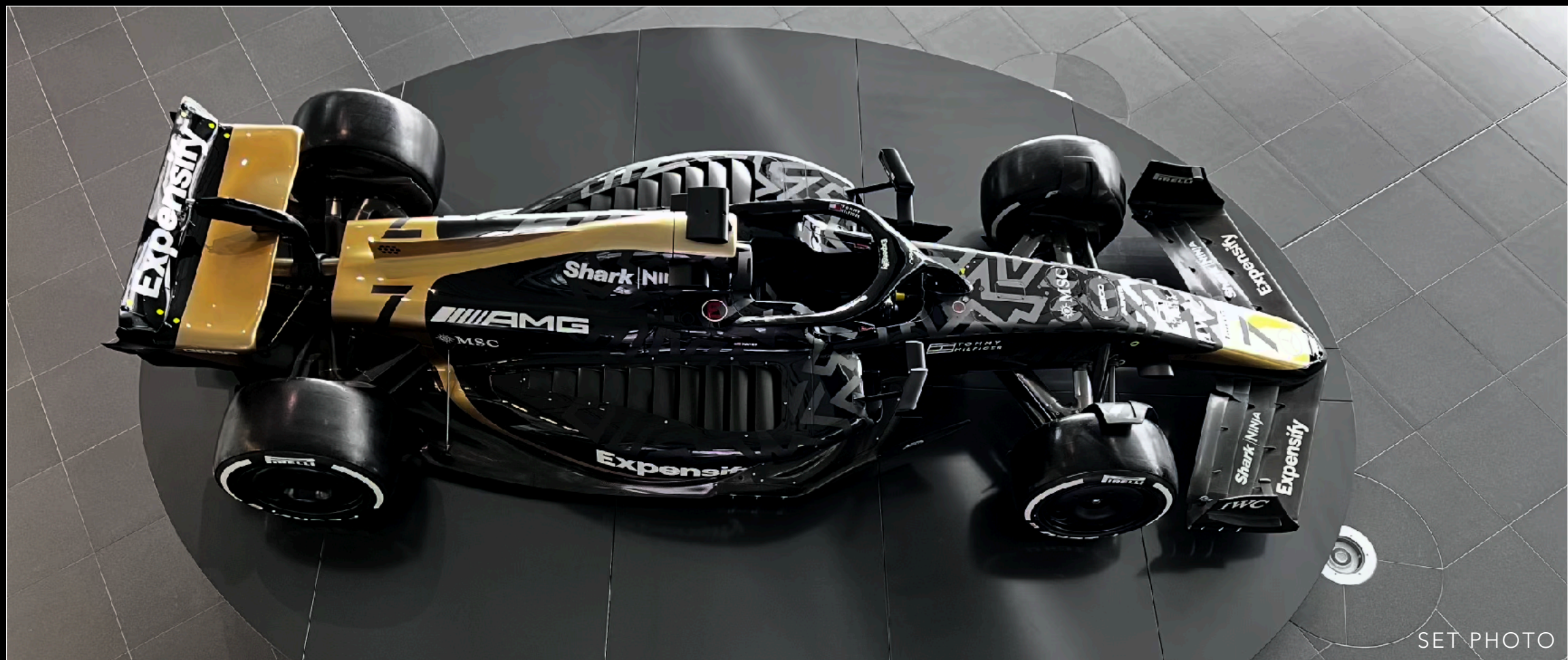
CONCEPT



FINAL FRAME

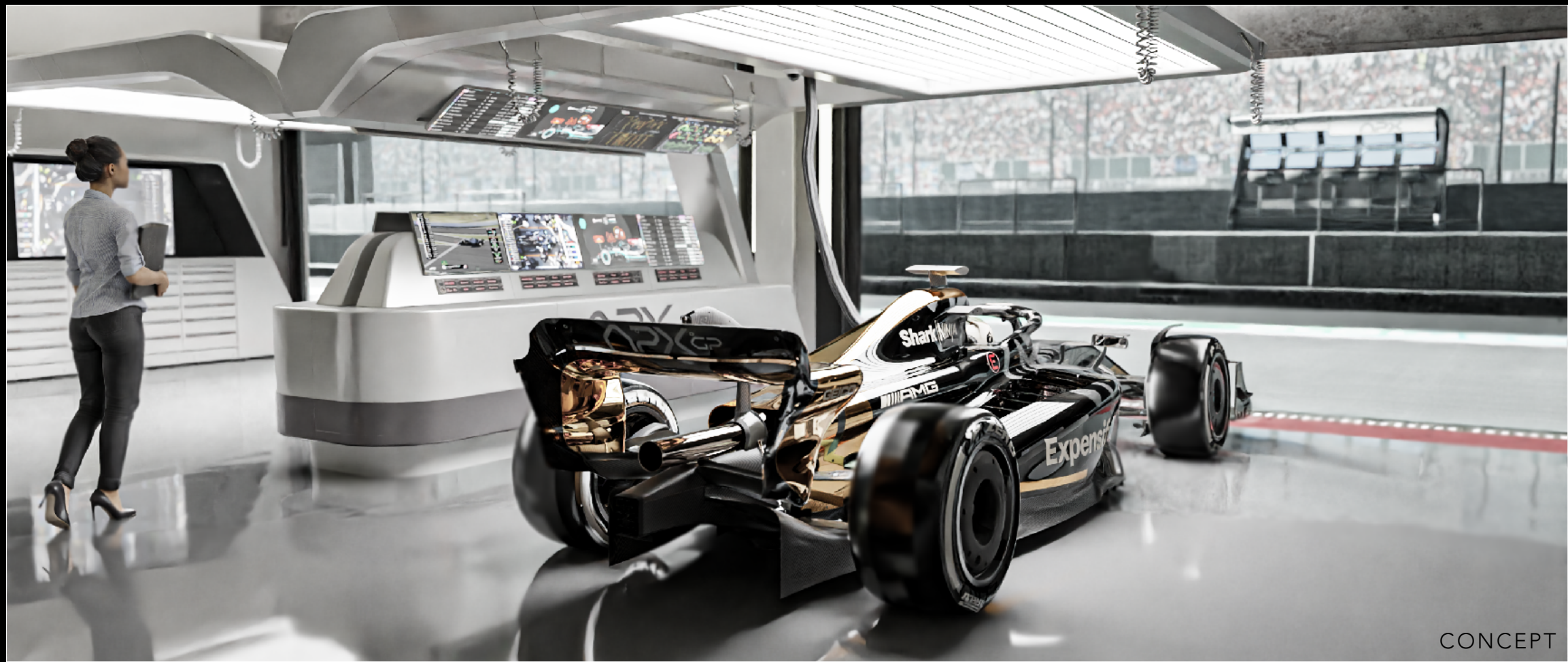
APEX CAR



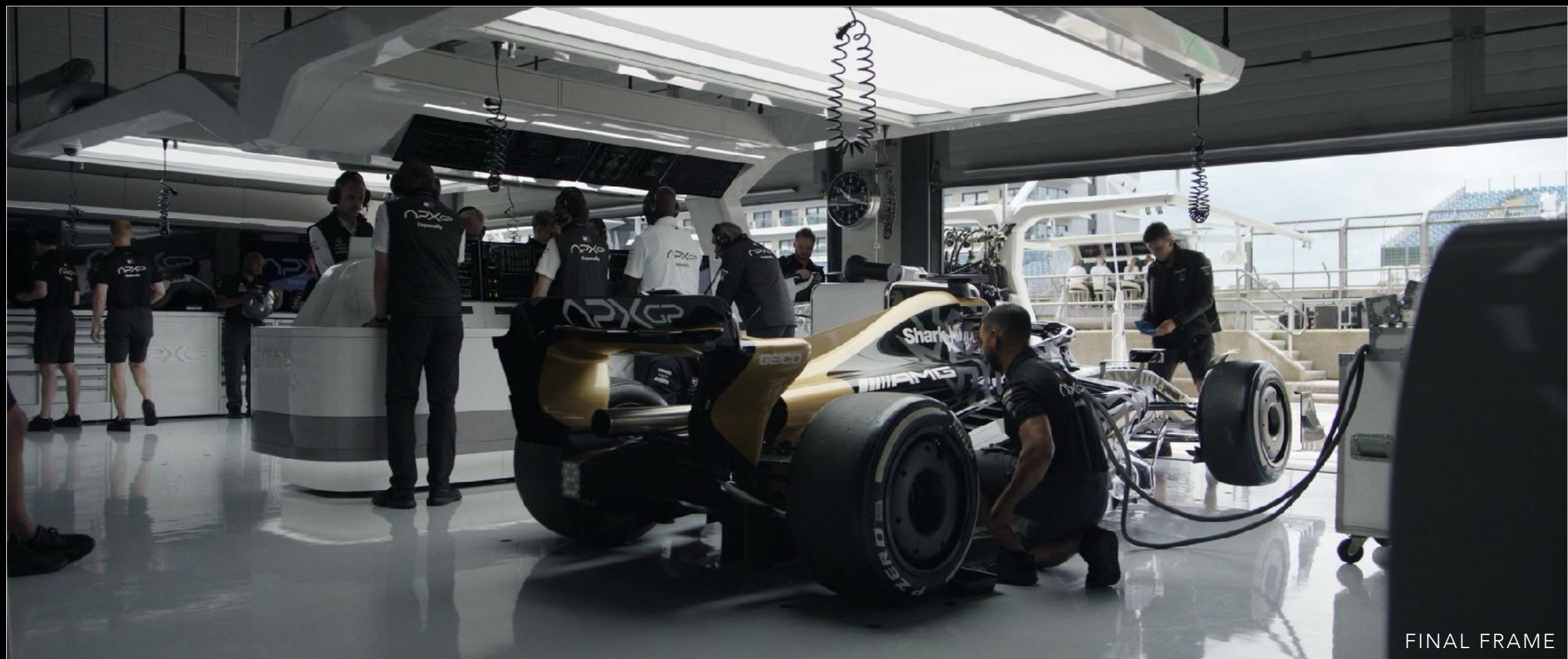


APEX CAR





CONCEPT



FINAL FRAME

APEX GARAGE





CONCEPT



FINAL FRAME

DAYTONA PORSCHE





FINAL FRAME



FINAL FRAME

SONNY'S RV





TRUCK STOP





APEX HQ - EXTERIOR





APEX HQ - FOYER





# APEX HQ - PRESS CONFERENCE





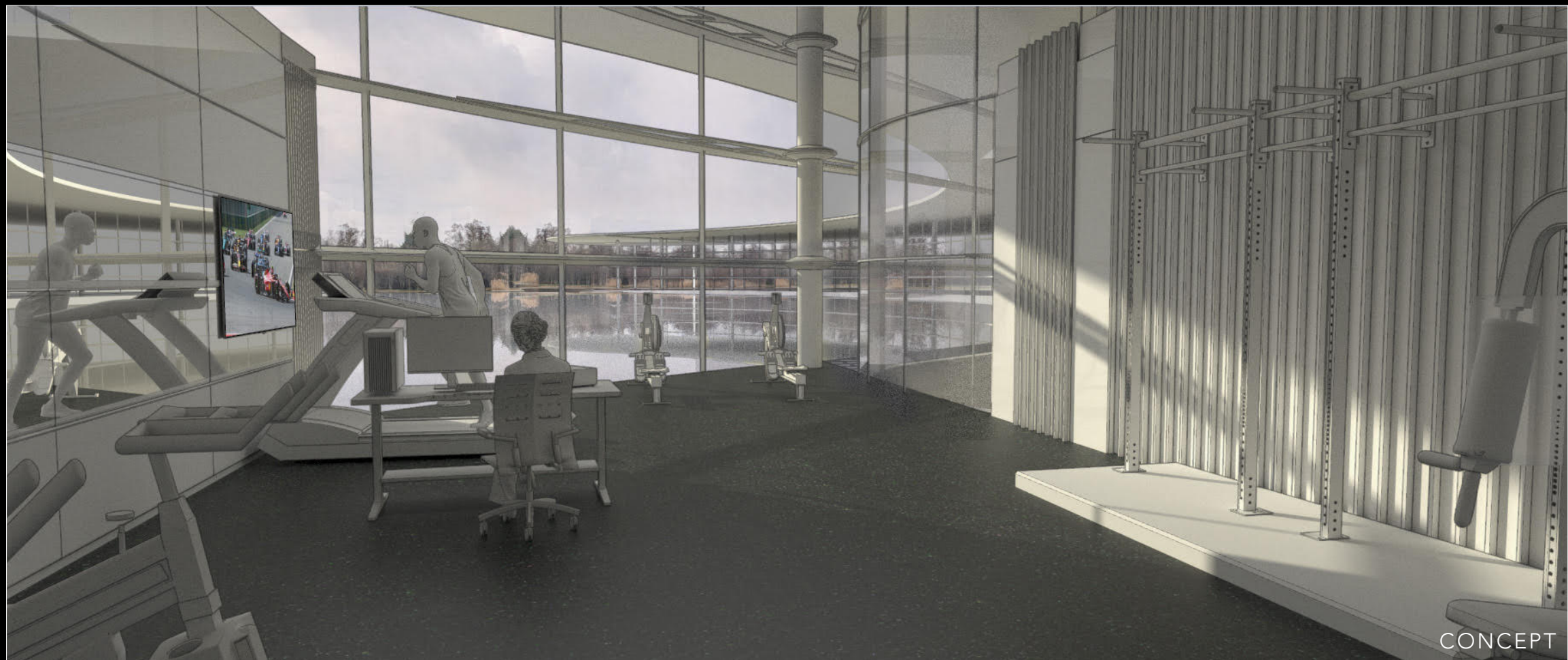
CONCEPT



FINAL FRAME

APEX HQ - CFD LAB





APEX HQ - GYM





CONCEPT



FINAL FRAME

APEX HQ - RUBEN'S OFFICE





CONCEPT



FINAL FRAME

APEX TREETOPS





CONCEPT



FINAL FRAME

APEX TREETOPS





LOCATION FINAL FRAME



STAGE BUILD FINAL FRAME

SONNYS HOUSE





# MONZA CRASH





# MONZA CRASH





CONCEPT



FINAL FRAME

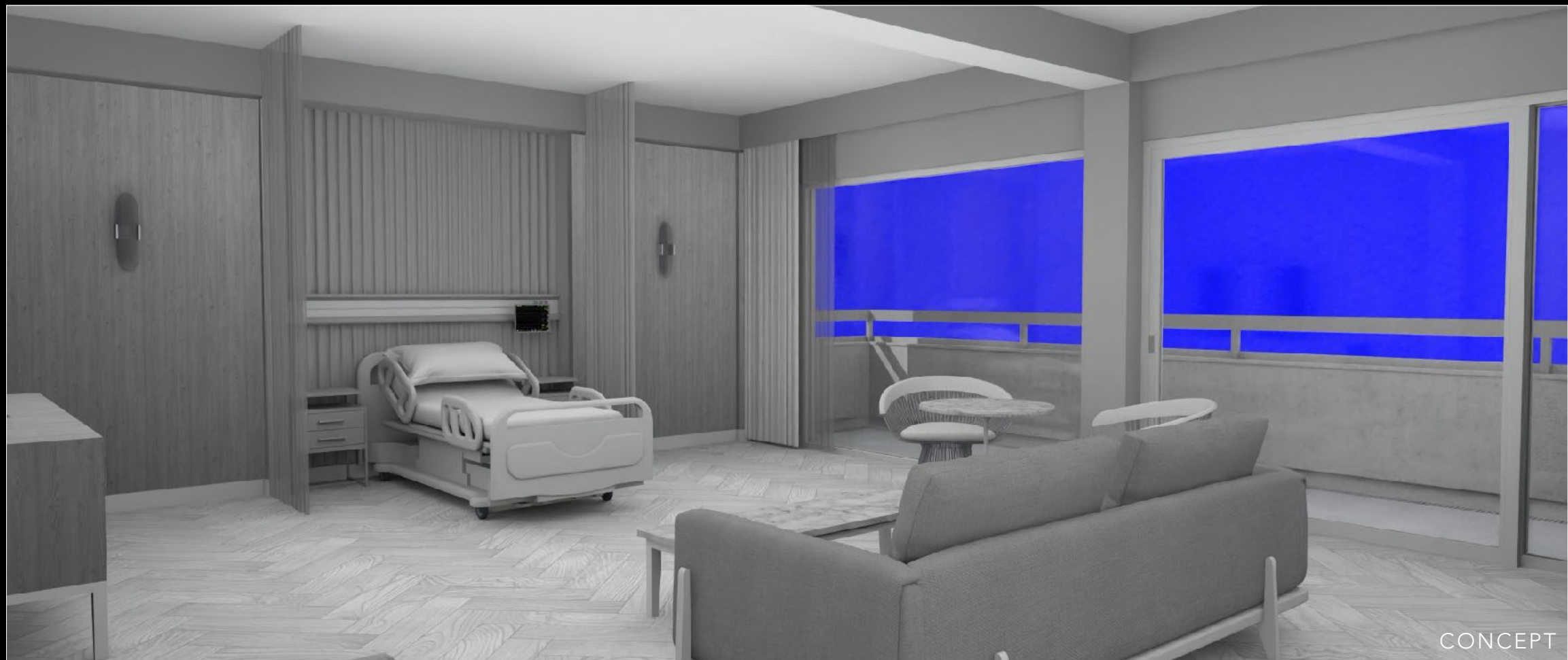
MILAN HOSPITAL





MILAN HOSPITAL





LAS VEGAS HOSPITAL





# LAS VEGAS HOTEL









SHOT DURING GRAND PRIX WEEKENDS





SHOT DURING GRAND PRIX WEEKENDS





SHOT DURING GRAND PRIX WEEKENDS





SHOT DURING GRAND PRIX WEEKENDS





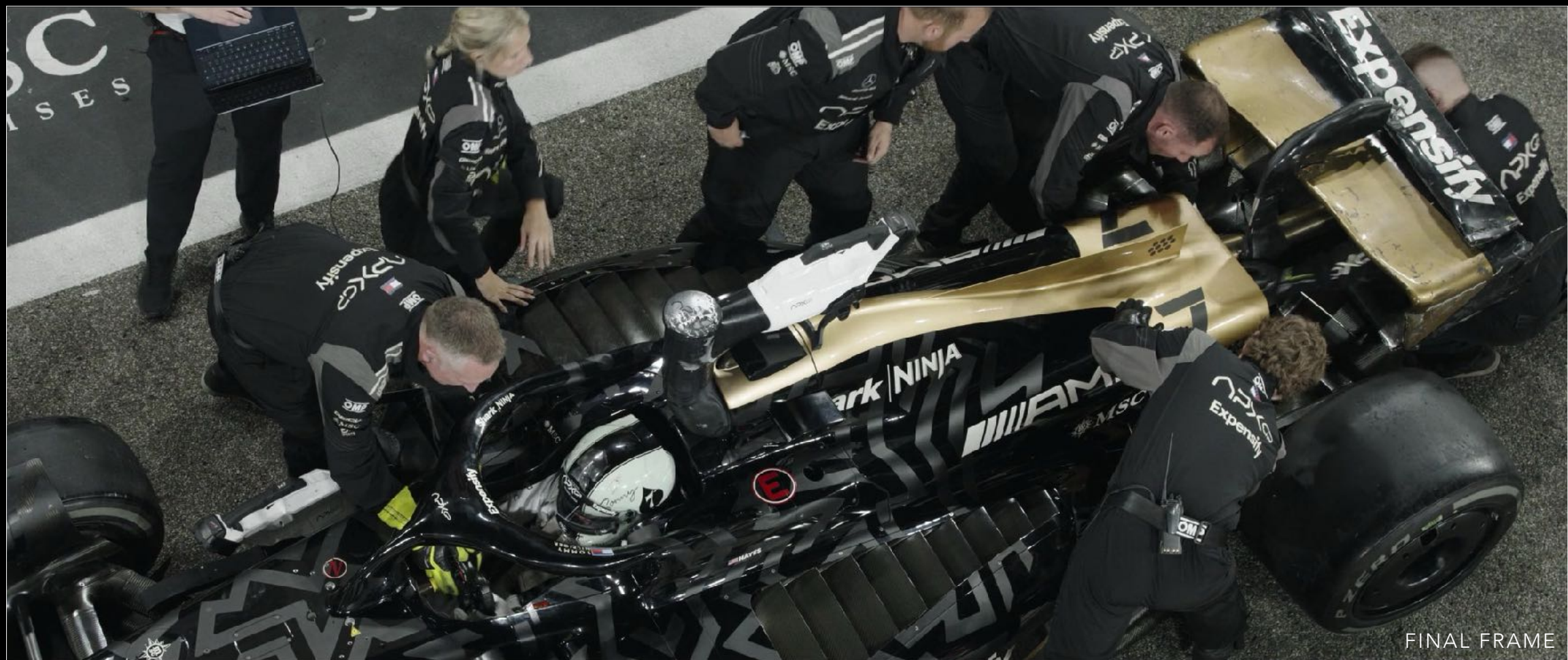
FINAL FRAME



FINAL FRAME

SHOT DURING GRAND PRIX WEEKENDS





SHOT DURING GRAND PRIX WEEKENDS





SHOT DURING GRAND PRIX WEEKENDS





SHOT DURING GRAND PRIX WEEKENDS





FINAL FRAME



FINAL FRAME

SHOT DURING GRAND PRIX WEEKENDS





FINAL FRAME



FINAL FRAME

SHOT DURING GRAND PRIX WEEKENDS



**BEN MUNRO + MARK TILDESLEY**

PRODUCTION DESIGNERS

**ANDREW McCARTHY + VERONIQUE MELERY**

SET DECORATORS

**WILL NEWTON**

SENIOR ART DIRECTOR

**OLIVER BENSON, EDD CROSS, KETAN WAIKER, HUGH MCCLELLAND, TIMOTHY MOEN**

ART DIRECTORS

**SAM SPARKS, MATILDA BEARD, GEORGINA DEVINE, MILLY WHITE, CRAIG GILROY, ANNA CZERNIAVSKA**

ASSISTANT ART DIRECTORS

**RUBY SCUTTER, JUNTING YANG, NERIAH MOONEEGAN**

ART DEPARTMENT ASSISTANTS

**LOTTIE GELIOT, LUCY CUNNINGTON**

ART DEPARTMENT CO-ORDINATOR

**DOMINIC SIKKING, FIONNLAGH FINLAYSON, CHRIS KITASAKKUL**

LEAD GRAPHICS DESIGNERS

**BETH KENDRICK, TEREZA**

GRAPHICS DESIGNERS