

DROP

Production Designer: Susie Cullen

FROM PRODUCERS OF **M3GAN** AND PRODUCERS OF **A QUIET PLACE**
AND THE DIRECTOR OF **HAPPY DEATH DAY**

EVERYONE'S
A SUSPECT

DROP



A widowed mother on her first date in years, who arrives at an upscale restaurant where she is relieved that her date, Henry, is more charming and handsome than she expected. But their chemistry begins to curdle as Violet begins being irritated and then terrorized by a series of anonymous drops to her phone. The Main set for this film is “Palate” an upscale restaurant on the top floor of a Chicago high rise.

Shot entirely in Ireland.



Concept Drawings











Set Construction



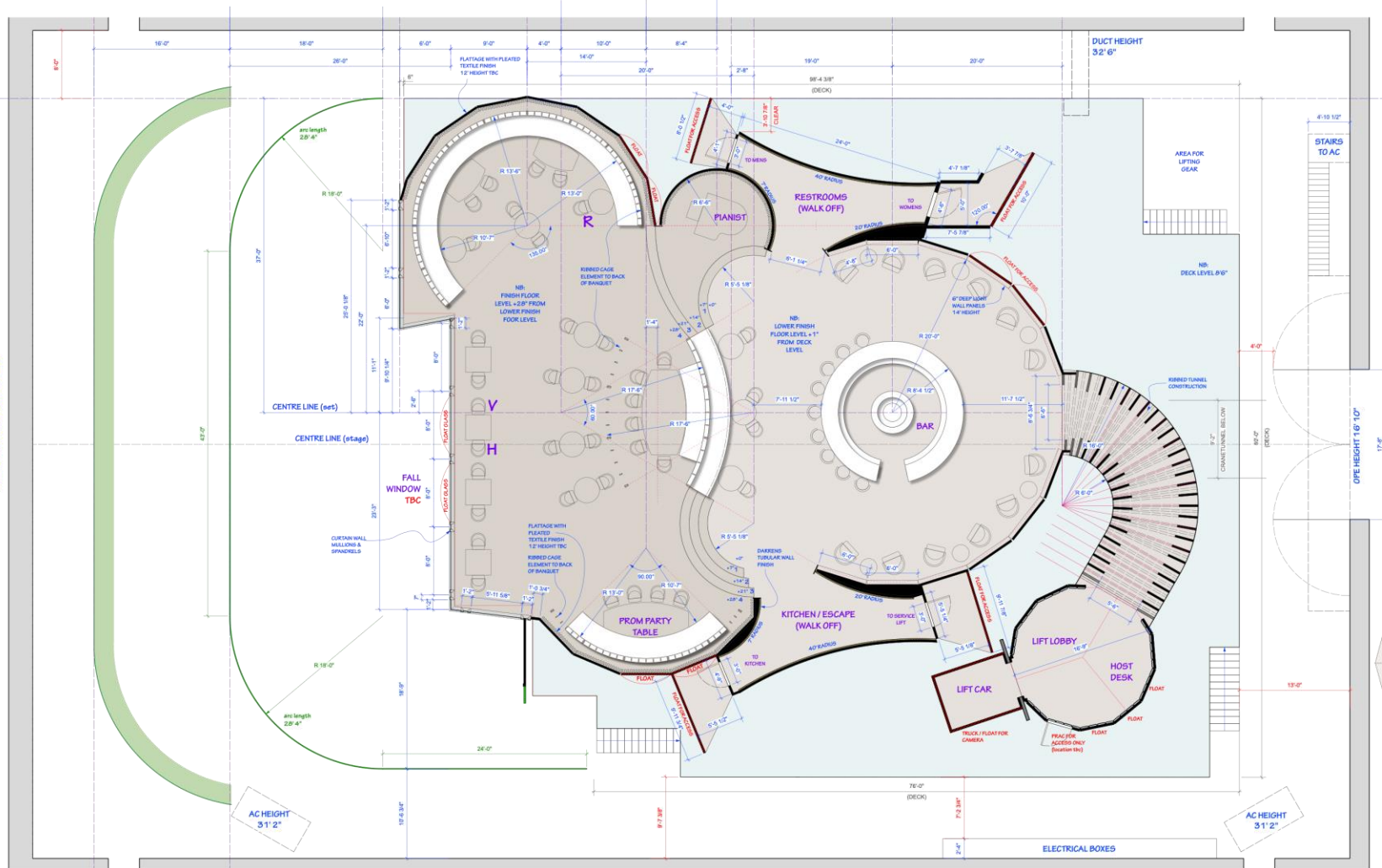








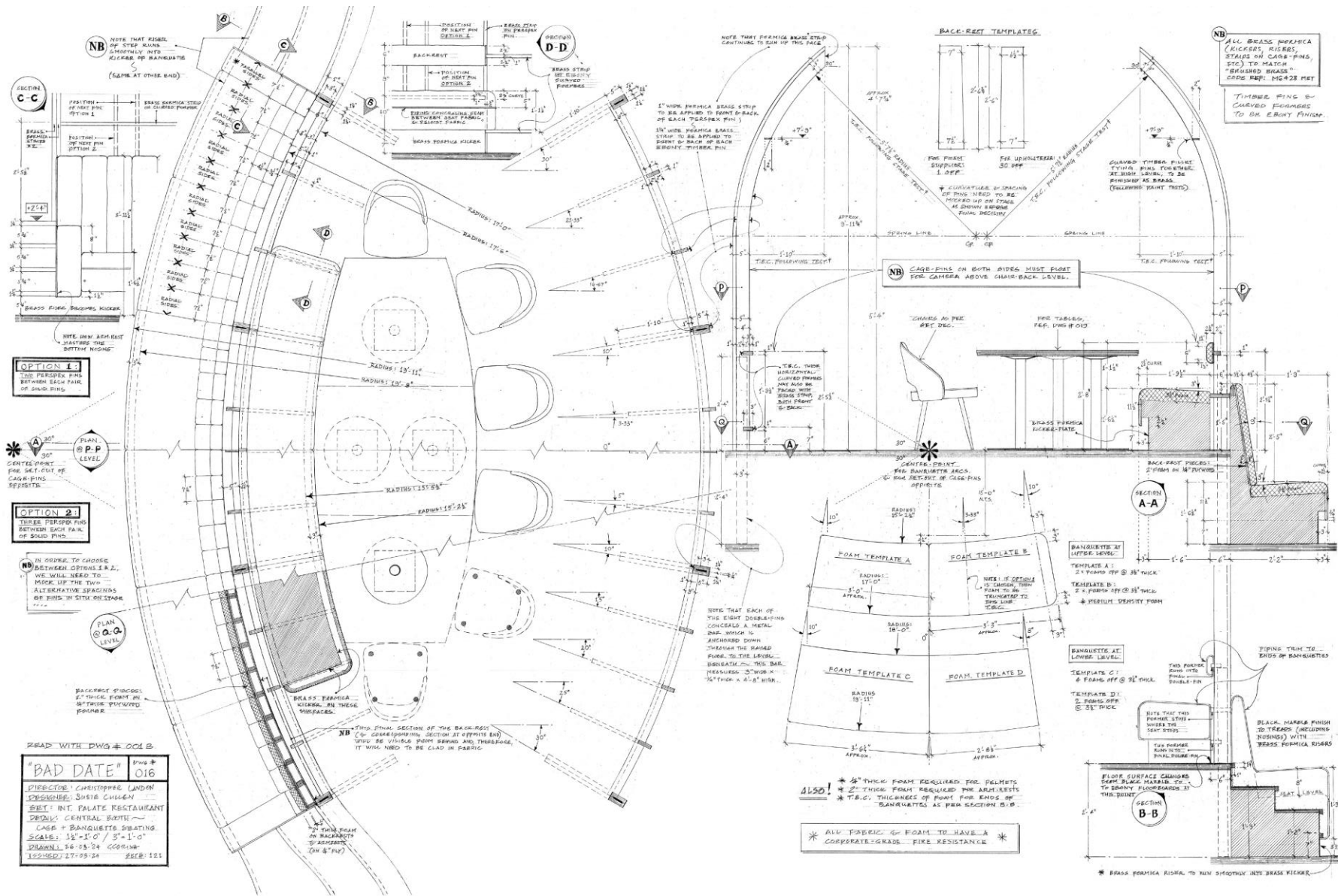
WORKING HEIGHT TO STEEL TRACK 34'-4"
WORKING HEIGHT TO VENIS 35'-10"



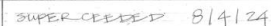
5 Stage Plan
Scale: 1/4" = 1'-0"

REV. C DATE ISSUED 05-04-24

BAD DATE		Production Designer	DWG No.
		SUSIE CULLEN	001
SET	STAGE SETOUT - TUNNEL & LIFT LOBBY REVISED	Rev.	121
DETAILS	SCALE	1/4" = 1'	
DRAWN BY	BT	PRODUCED BY	CMR
APPROVED BY	SC - SUSIE CULLEN	DIRECTOR	BOYD
DATE DRAWN	05-04-24	PRODUCTION	PROPS
DATE ISSUED	05-04-24	LOCATIONS	DRAPES
STAGE / LOC.	0 STAGE	WALL & SET	GREENS
			CNC
			STUNTS
			GRAPHICS



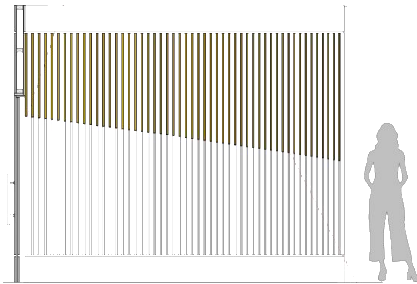
UPDATED 8/4/24



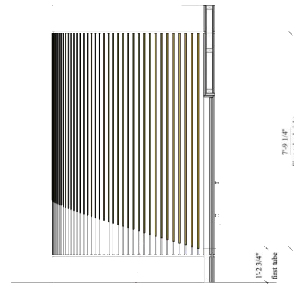
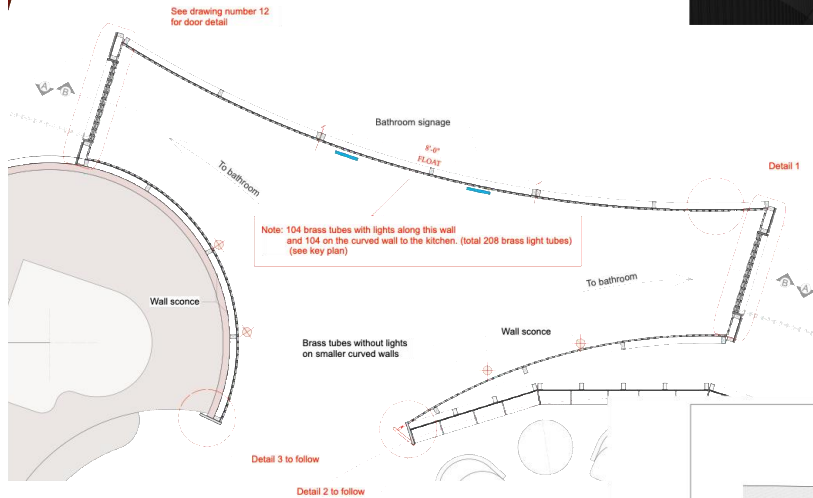
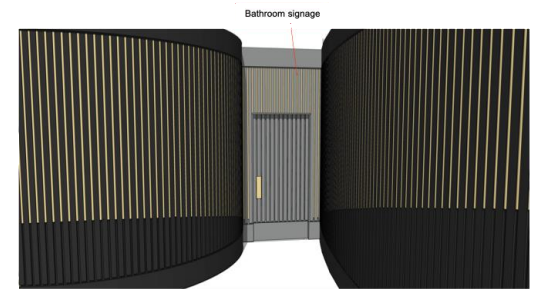
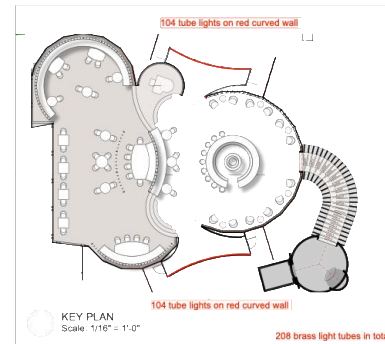
BAD DATE	# 29
----------	------

SET: PALATE WOMEN'S
RESTROOMS
DETAIL: ELEVATIONS / SECTIONS
SCALE: $\frac{1}{2}" = 1'0"$
DATE ISSUED: 2/4/29

Height of this brass tube to match the tube opposite it on the other side of the door

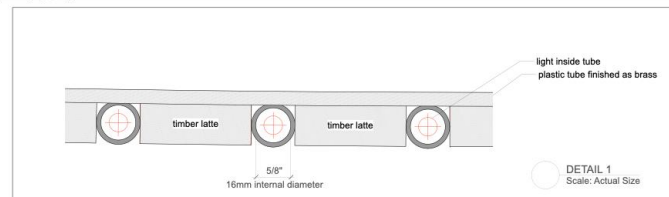
SECTION A-A
Scale: 1/2" = 1'-0"

See drawing number 17 for individual brass tube heights

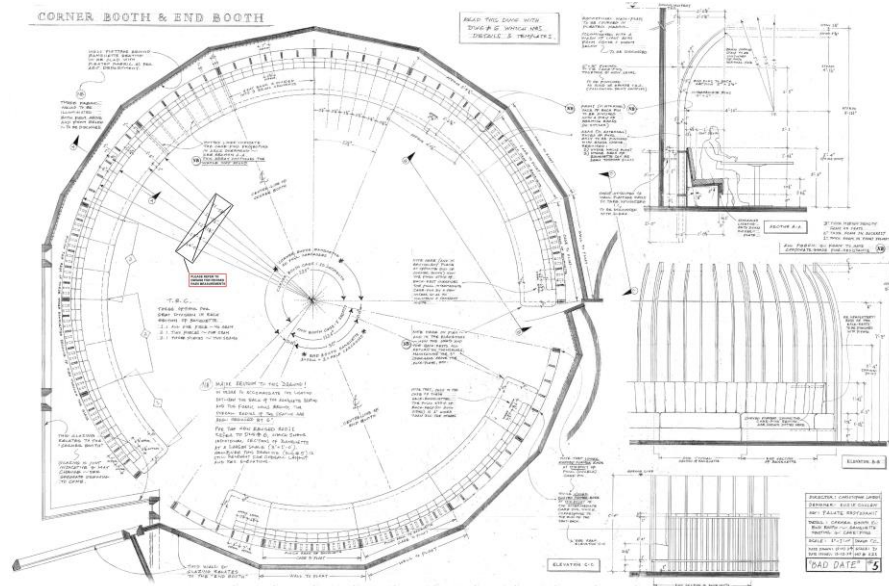
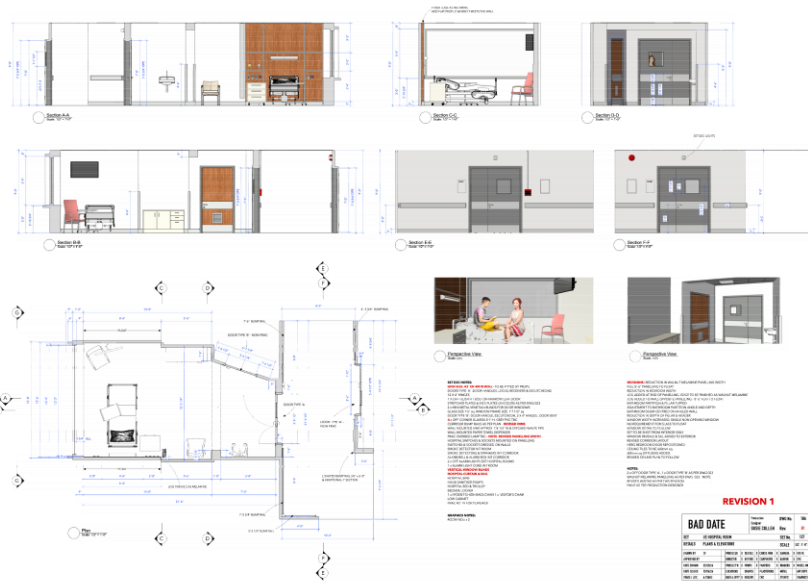
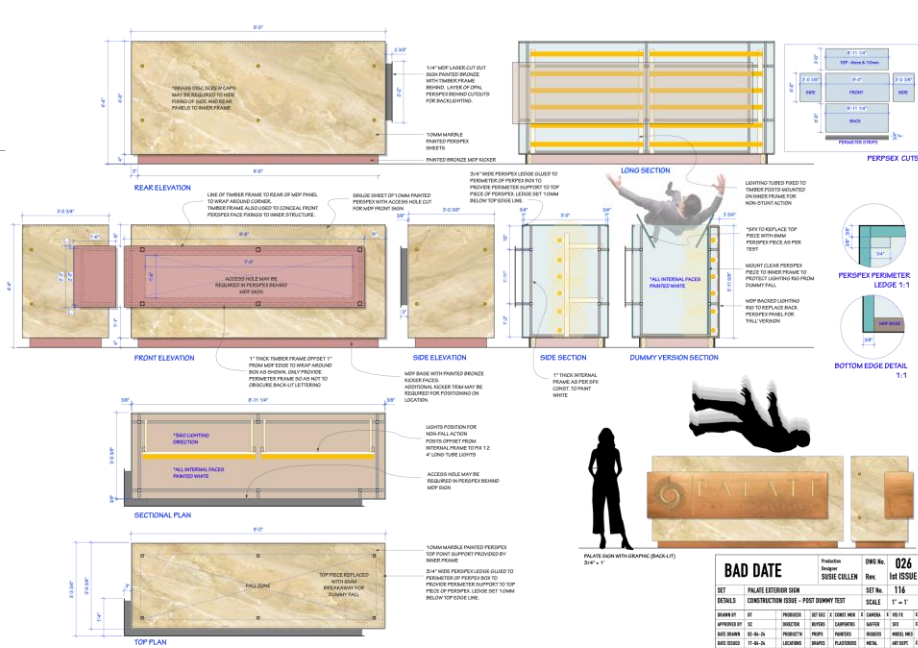
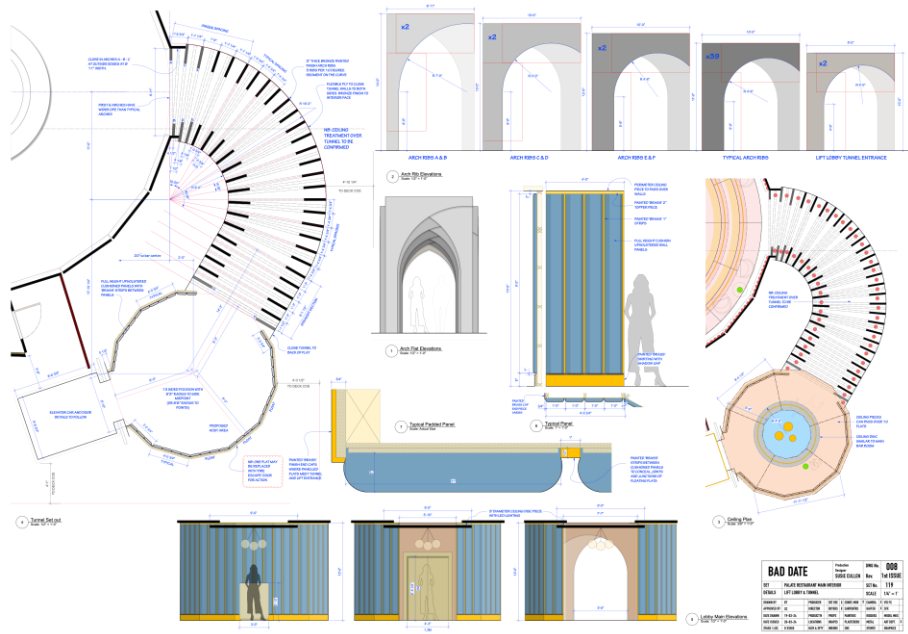
SECTION B-B
Scale: 1/2" = 1'-0"PLAN
Scale: 1/2" = 1'-0"See drawing number 12
for door detailKEY PLAN
Scale: 1/16" = 1'-0"

208 brass light tubes in total

See drawing number 17 for individual brass tube heights

DETAIL 1
Scale: Actual Size**BAD DATE**Production
Designer
SUSIE CULLENDWG No. 13
Rev.

SET DETAILS		INT. PALATE RESTAURANT Curved walls with light tubes				SET No. 121 SCALE 1/2" = 1ft. & full scale			
DRAWN BY		PRODUCER	X	SET DEC	CONST MGR	X	CAMERA	X	VIS FX
APPROVED BY		DIRECTOR	X	BUYERS	CARPENTERS	X	GAFFER	X	SFX
DATE DRAWN	13-03-24	PRODUCT	X	PROPS	PAINTERS	X	RIGGERS	X	MODEL MKS
DATE ISSUED		LOCATIONS	X	DRAPE	PLASTERERS	X	METAL	X	ART DEPT
STAGE / LOC.	D STAGE	HLTH & SFTY	X	GREENS	CNC		STUNTS	X	GRAPHICS



Ext “Palate” Location



Ladies Restroom





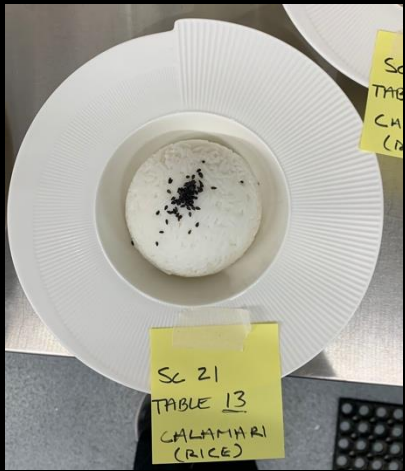






Food Styling:

The film was set on 1 night in the Restaurant
The meal was carefully planned for all guests (60 cover capacity).
We combined Model made food with edible elements which could maintain food safety and hygiene standards throughout.



Elevator Lobby



Art Department

Production Designer	Susie Cullen
Supervising Art Director	Aisling O Callaghan
Art Director	Bryan Tormey
Art Director	Colman Corish
Assistant Art Director	Andrew O' Donoghue
Graphic Designer	Patricia Douglas
Assistant Graphic Designer	Chris Merton
Assistant Draftsperson	Diarmuid Wolfe
Motion Graphics	Cole Delaney
Art Department Trainee	Beth Mc Loughlin
Set Decorator	Kevin Downey
Concept Artist	Jonathon Mc Gonnell