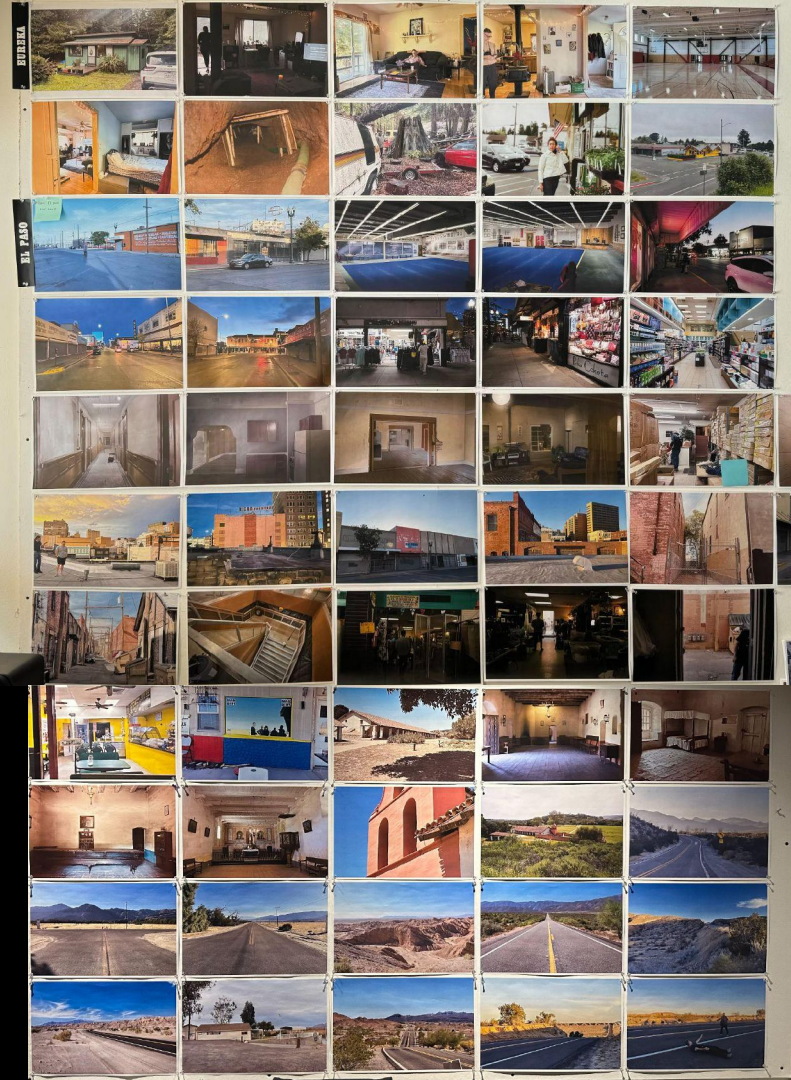


ONE BATTLE AFTER ANOTHER

DESIGN PRESENTATION



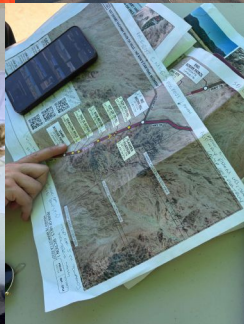
One Battle After Another is the story of a father, ex-revolutionary Bob, on a quest to find and bring home his daughter, Willa. His journey begins 16 years prior as a revolutionary, jumping to the redwoods, then follows him through fractured urban cities and rural sanctuaries, culminating in the wide-open desert. At its core, it is a family story — but also about what happens when you step outside the safety of your world and confront the enormity of the one around you, where past and present collide.

Our guiding principle with director Paul Thomas Anderson was the present. Every decision was grounded in the immediacy of the characters' lives: *Where are they going? How did they get here?* Research came from books, documentaries, YouTube videos, oral histories, and field work with local communities and experts. The goal was not to impose a design, but to let the world — in all its texture and imperfection — shape the story.

We began cold-scouting in 2022 in Eureka and, over two and a half years, built the film from the redwoods to the borderlands — a tapestry of California. Producer and First AD Adam Somner guided us through a schedule and logistics that ran through nine city hubs and two states. Set builds took place both on location and at LA North Stages. Every environment was built practically - 360 degrees, fully interactive, allowing cast and crew to immerse themselves completely in the worlds we created. Making the film often felt like its title — one battle after another — requiring persistence, problem-solving, and trust across every team.

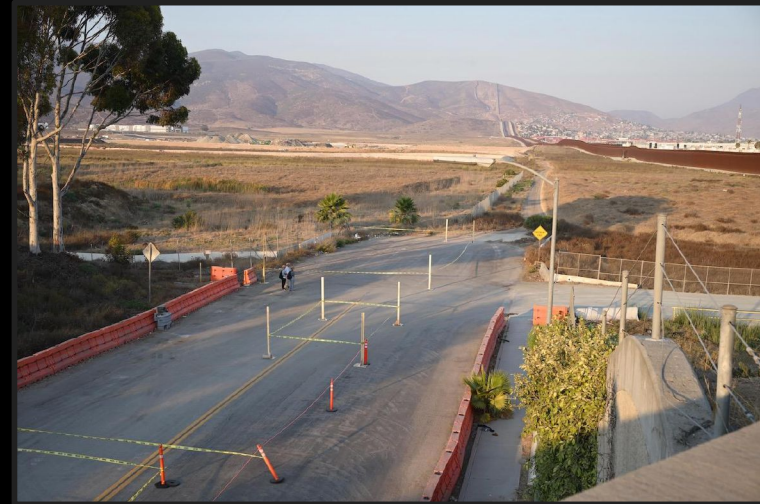
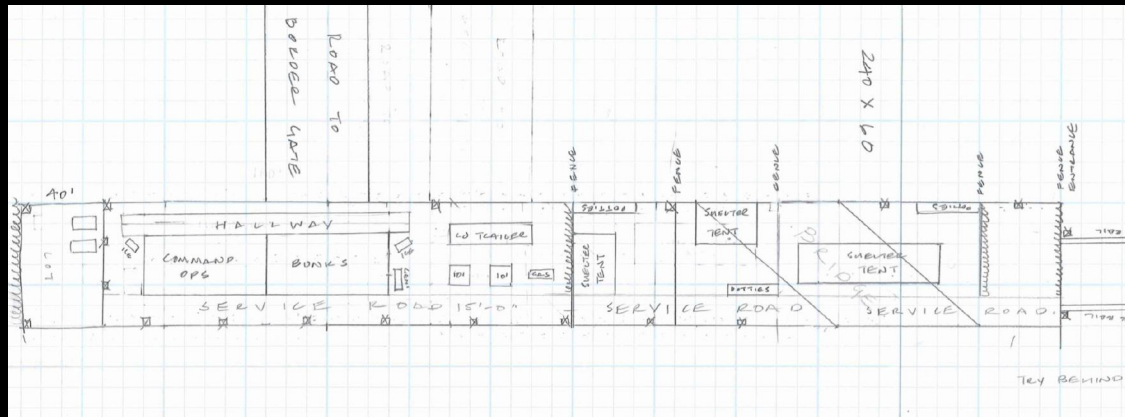
Thank you for coming along on this amazing ride!

OBAA ART DEPARTMENT



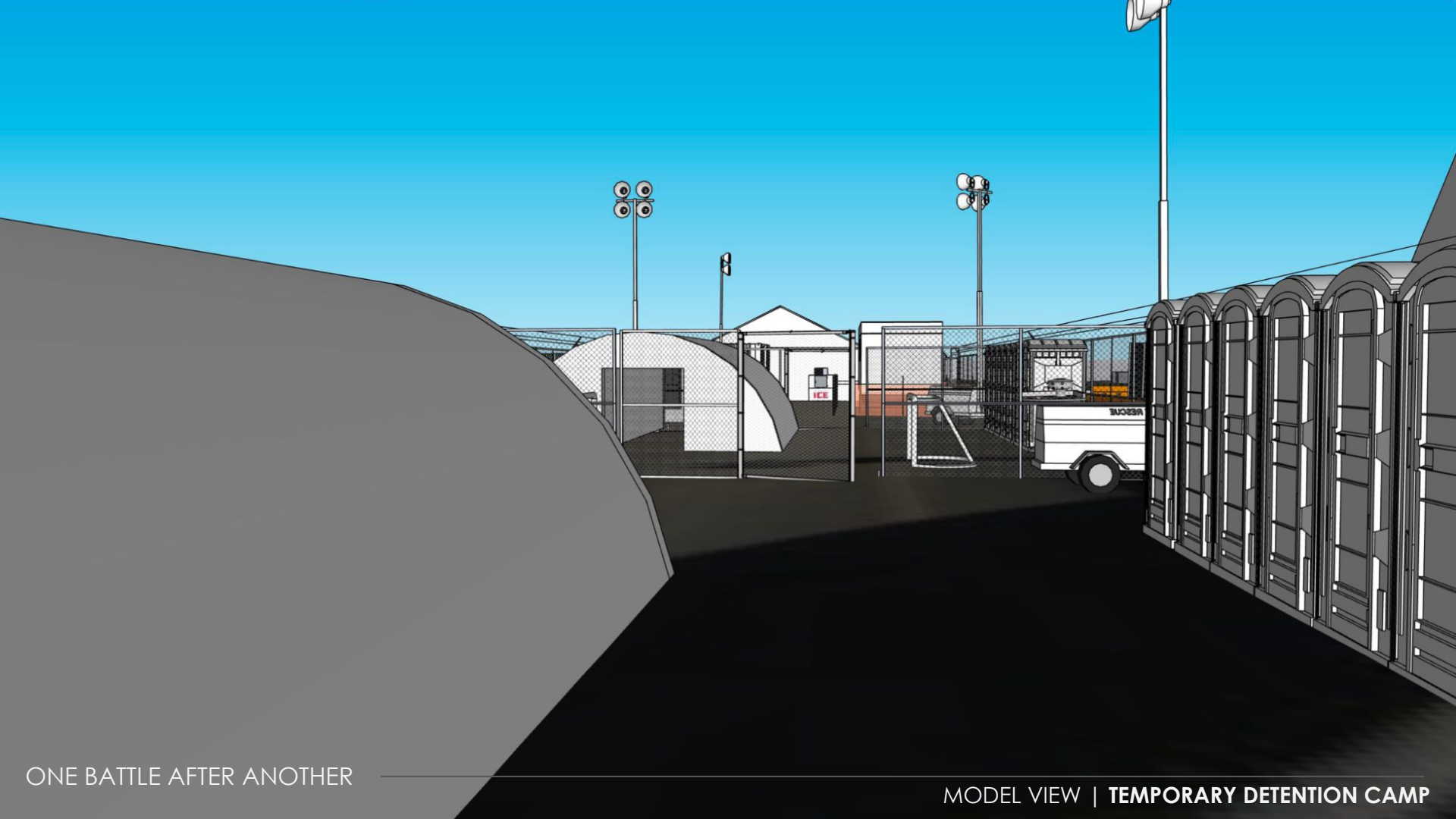
A person wearing a black t-shirt, olive green cargo pants, and a black baseball cap is walking away from the camera along a high concrete wall. To the left of the wall, a large group of people is gathered in an outdoor area, some sitting on the ground. There are several white tents and structures in the background. The scene is set in a desert-like environment with mountains in the distance and palm trees in the foreground. The sky is a mix of orange and blue, suggesting dusk or dawn. The text "OTAY MESA TEMPORARY DETENTION CAMP" is overlaid in white, bold, sans-serif font across the middle of the image.

OTAY MESA TEMPORARY DETENTION CAMP



ONE BATTLE AFTER ANOTHER

CONCEPT | TEMPORARY DETENTION CAMP



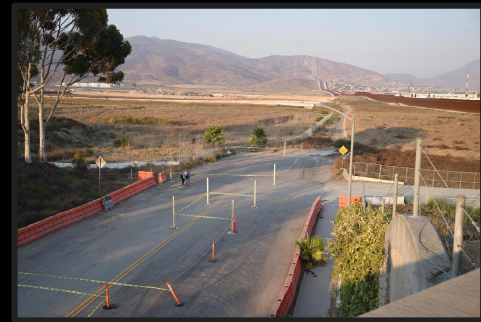
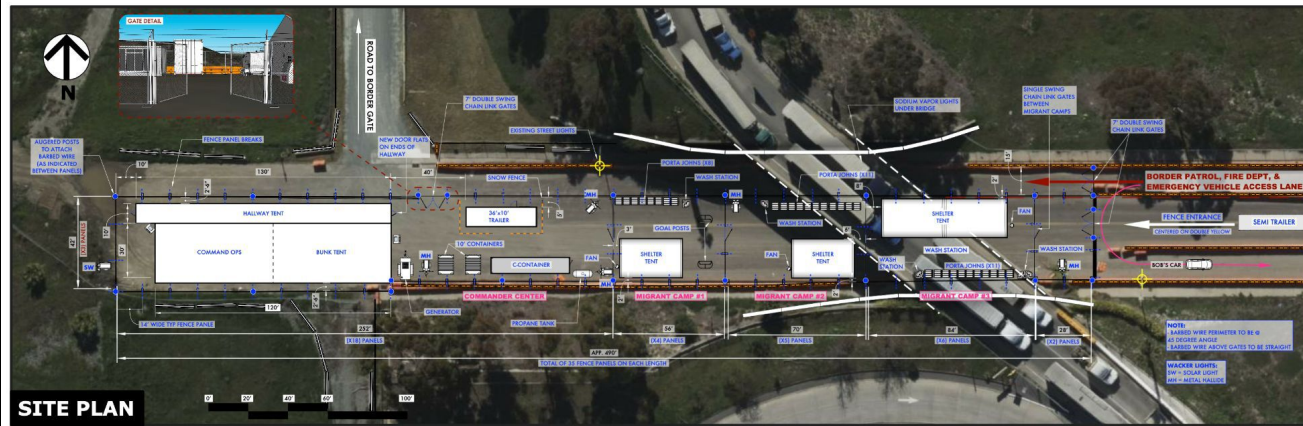
ONE BATTLE AFTER ANOTHER

MODEL VIEW | **TEMPORARY DETENTION CAMP**



ONE BATTLE AFTER ANOTHER

TEMPORARY DETENTION CAMP



ONE BATTLE AFTER ANOTHER

TEMPORARY DETENTION CAMP



ONE BATTLE AFTER ANOTHER

TEMPORARY DETENTION CAMP



ONE BATTLE AFTER ANOTHER

TEMPORARY DETENTION CAMP



ONE BATTLE AFTER ANOTHER

TEMPORARY DETENTION CAMP



ONE BATTLE AFTER ANOTHER

TEMPORARY DETENTION CAMP



ONE BATTLE AFTER ANOTHER



THE FRENCH 75 REVOLUTION



ONE BATTLE AFTER ANOTHER

THE FRENCH 75 REVOLUTION

A young woman with dark curly hair tied in a ponytail is shown in profile, facing right. She is wearing a white martial arts gi with a purple belt. Her right arm is extended forward in a punch, and her left hand is positioned near her waist. The background is a blurred dojo with several framed certificates on the wall and a red punching bag on the right. The text "16 YEARS LATER" is overlaid in the center of the image.

16 YEARS LATER

A man with a beard and mustache, wearing a red and blue plaid shirt, is seated at a table. He is holding a blue and yellow ceramic mug with his right hand and gesturing with his left hand. The background features a window with white curtains, a potted plant in a blue pot on the left, and another potted plant on the right. The scene is dimly lit, with light coming from the window.

BOB & WILLA'S HOUSE



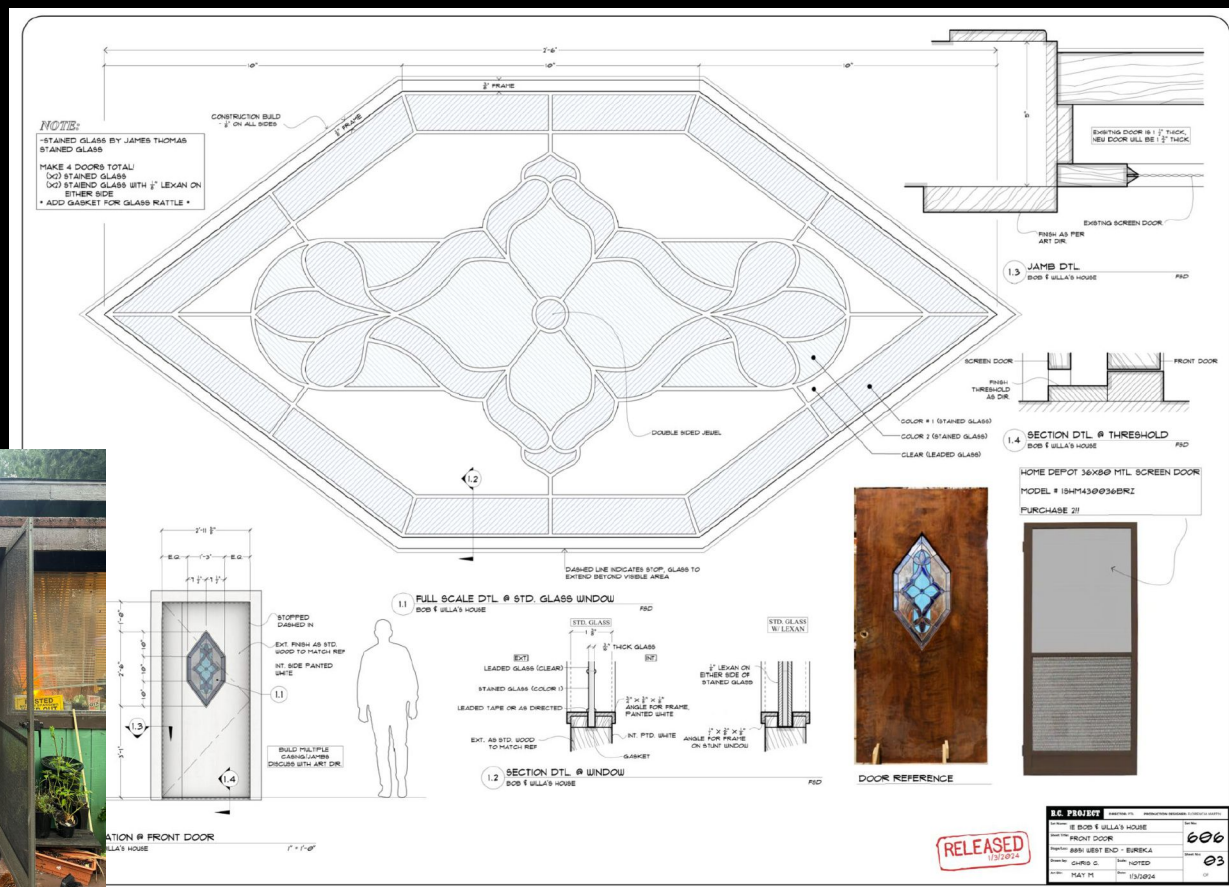
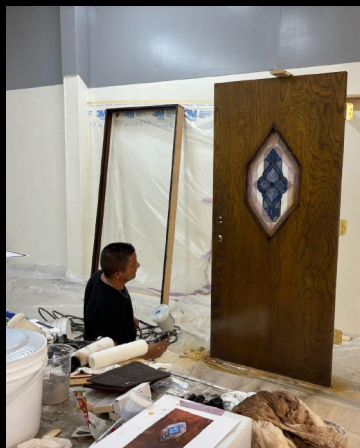
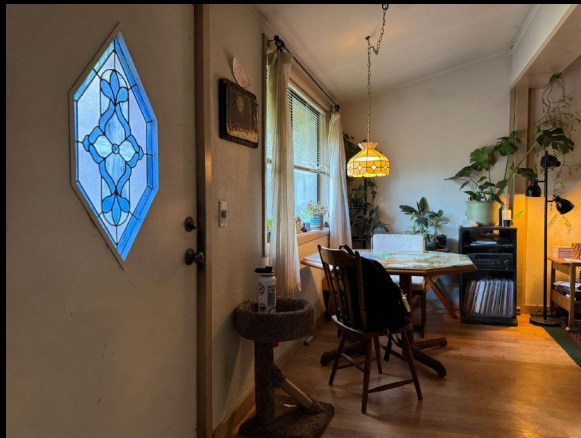
ONE BATTLE AFTER ANOTHER

BOB & WILLA'S HOUSE



ONE BATTLE AFTER ANOTHER

BOB & WILLA'S HOUSE



ONE BATTLE AFTER ANOTHER

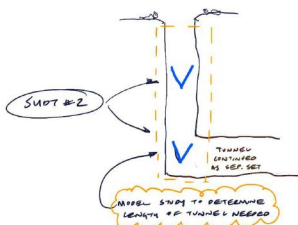
BOB & WILLA'S HOUSE



ONE BATTLE AFTER ANOTHER

BOB'S ESCAPE ROUTE

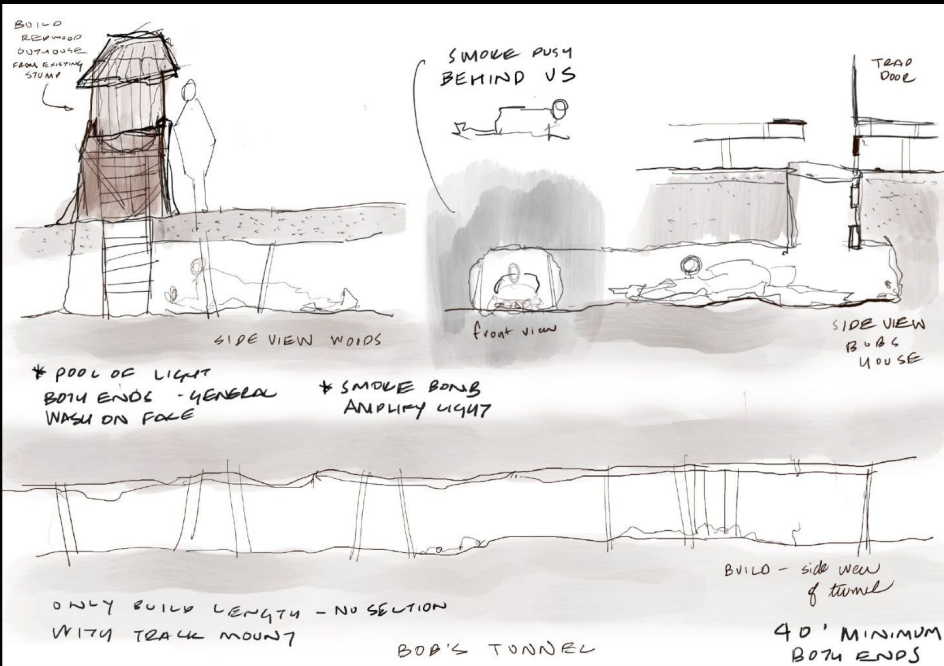
BOB'S BEDROOM STAGE BUILD

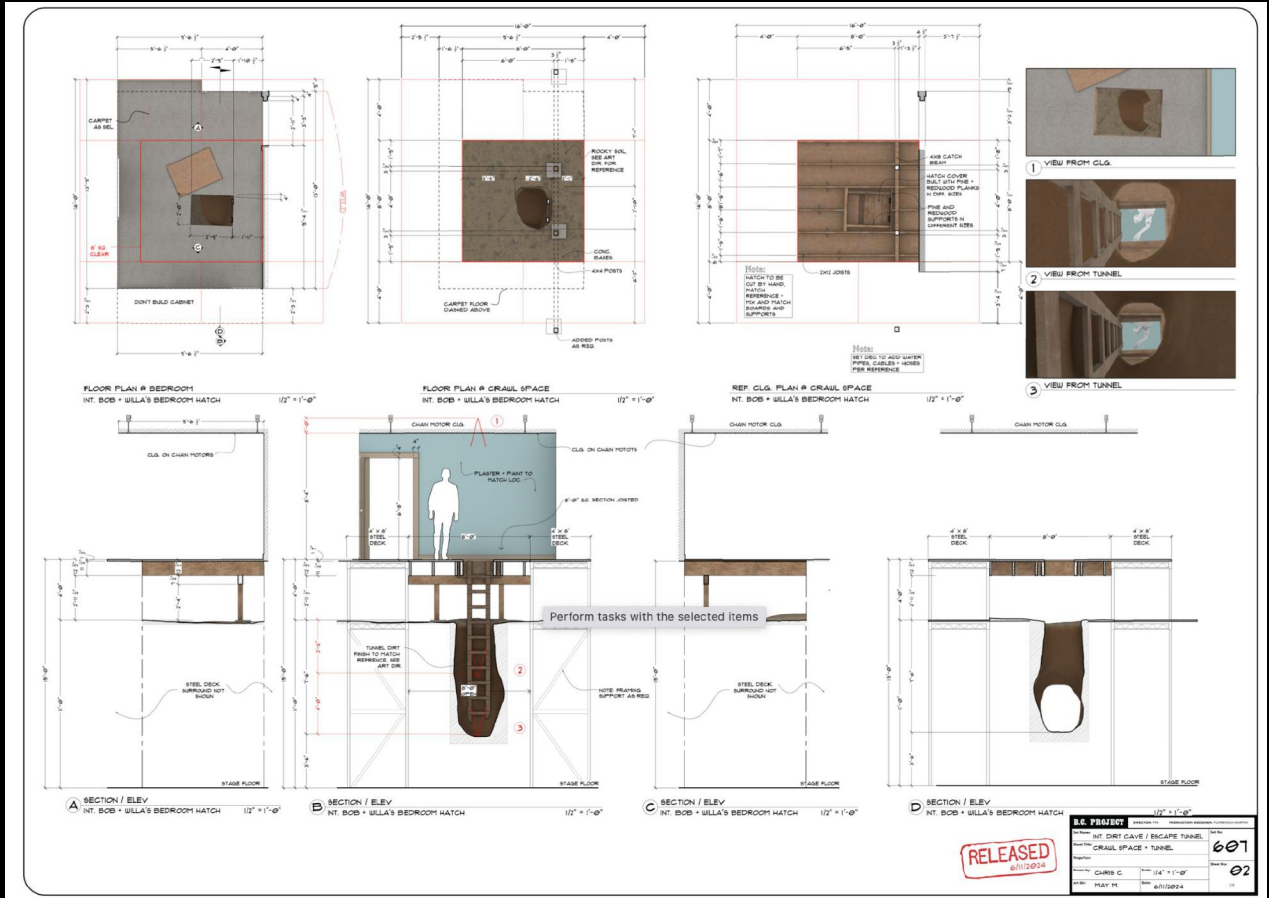


BOB'S BEDROOM - ESCAPE TUNNEL SET

- 1) SHOT FROM ABOVE LOOKING DOWN AT BED + SIDE OF BED AS FEET TUCK IN
- 2) CAMERA LOOKING UP AT L.J. & MEU FROM TUNNEL PAST CLEAR SPACE TOWARDS CEILING

*ALL WALLS & CEILING TO WILD !!





ONE BATTLE AFTER ANOTHER

BOB'S ESCAPE ROUTE



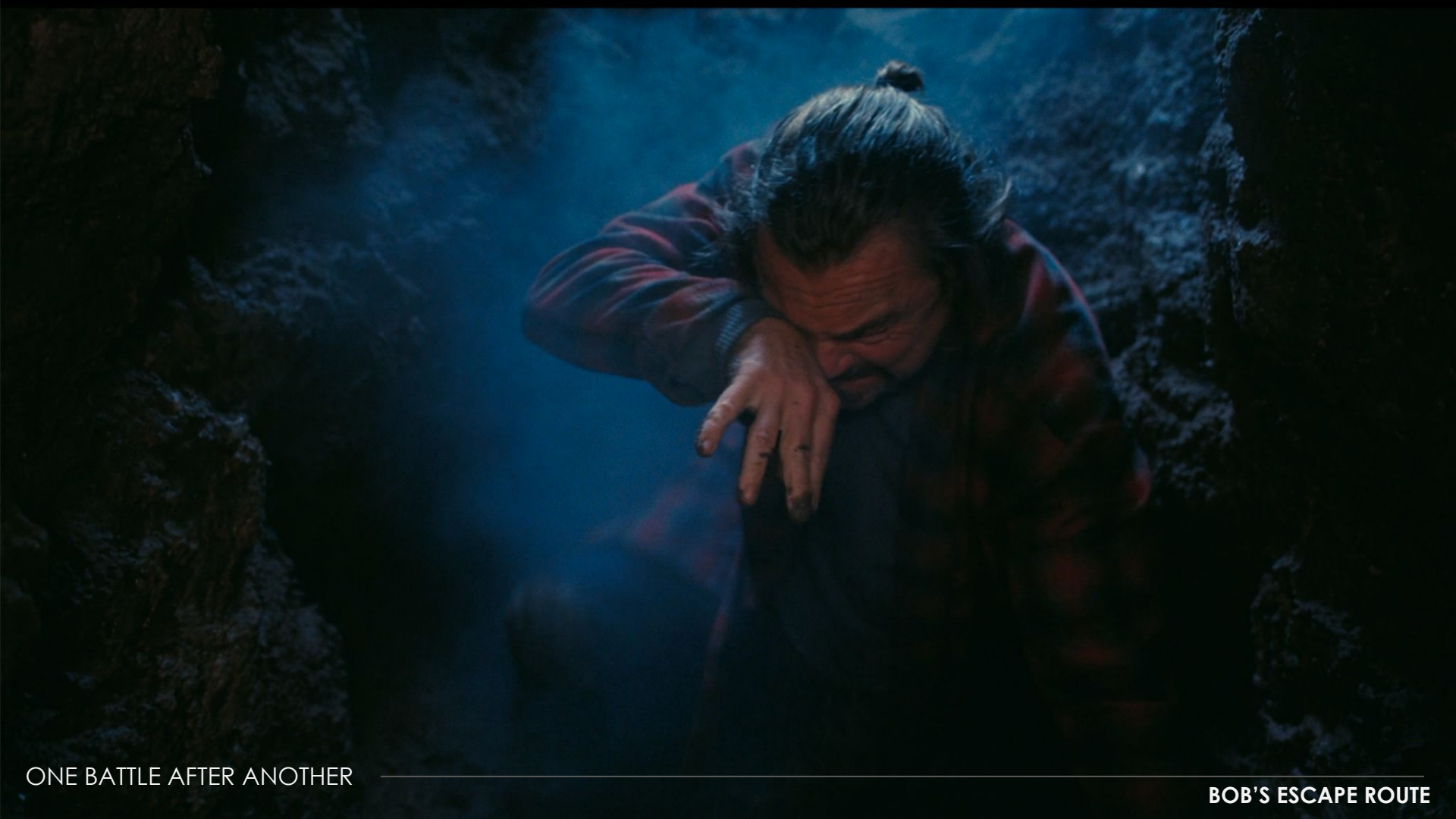
ONE BATTLE AFTER ANOTHER

BOB & WILLA'S HOUSE



ONE BATTLE AFTER ANOTHER

BOB'S ESCAPE ROUTE



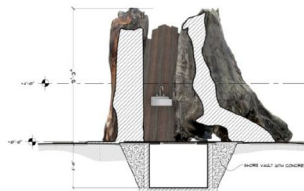
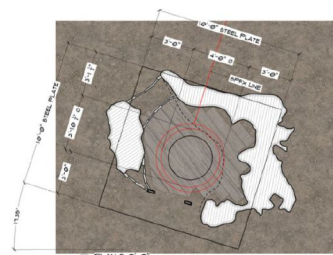
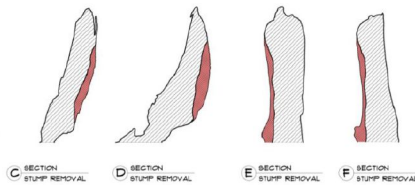
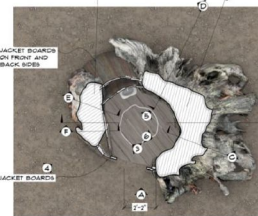
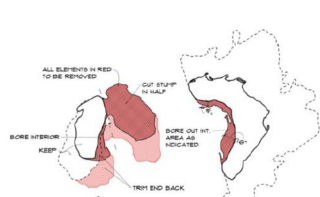
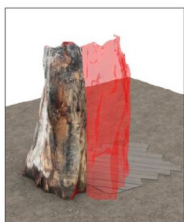
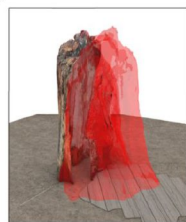
ONE BATTLE AFTER ANOTHER

BOB'S ESCAPE ROUTE



ONE BATTLE AFTER ANOTHER

BOB'S ESCAPE ROUTE



RELEASED
1/2/2024

R.G. PROJECT		DIRECTOR P.D.		PRODUCTION DESIGNER-FLORENCE B...	
Set Name	EXT. FOREST OUTHOUSE				Set No.
Scene Title	PLANS + ELEVATIONS				609
Represent	BOLSA GOKETA - EL PASO				Storyboard
Storyboard	CHRIS C.	Scale	3/4" = 1'-0"		01
Art Dir.	MAY M.	Date	1/27/04		GP



ONE BATTLE AFTER ANOTHER

BOB'S ESCAPE ROUTE



1 2

LOCALES 25¢
Por 15 Min.

Continente U.S.A.
3 minutos por \$1.00

MEXICO

LLAMADAS LOCALES SIN LÍMITE DE TIEMPO

LLAMADAS LARGA DISTANCIA 15¢
10 min.
5 Min. Incredibly
LLAMADAS INTERNACIONALES 25¢
20 min.

EMERGENCIA 911

ESPERE EL TONO DE MARACION

DEPOSITE

25¢

MARQUE EL NUMERO

INSTRUCCIONES DE MARCADO

LOCAL
EL AREA DE LLAMADA LOCAL SE INDICA EN EL DIRECTORIO

LARGA DISTANCIA
LLAMADAS DE PERSONA A PERSONA, LLAMADAS CON TARJETA DE CREDITO, LLAMADAS POR COMPAÑIA

QUE LLAMADAS CARGADAS A OTRO NUMERO

EMERGENCIAS Y ASISTENCIA

SEVOLLUTION DE MONEDAS PERDIDAS

ASISTENCIA DE DIRECTORIO

LOCAL

OTRAS LLAMADAS

411

OTRAS OPERADORAS

95 OPERADORAS

MARQUE EL NUMERO

10¢ OPERADORA

10¢ OPERADORA

10¢ OPERADORA

411

OTRAS OPERADORAS

95 OPERADORAS

THE 411-SUBSCRIBED LONG DISTANCE COMPANY

FOR CREDIT TO YOUR ACCOUNT

INVOICE

BUS WESTERN COMMUNICATIONS CORP.

1000 Central Expressway

Mountain View, CA 94035

Customer Service

1-800-155-4478

Service available 24 hours

Mountain View, CA 94035

CALL SIGNS FOR RADIO COMMUNICATION

BAKTAN CROSS CALL SIGN

W 6 B K C

ANY 3 REGISTERED LETTERS

STATE/AREA

COUNTRY

TRACTON COUNTY

W 6 T R C

CALEXICO

W 6 C A L

SISTERHOOD OF THE
BRAVE BEAVER

W 6 S B B

*Off the network no longer in operations

ONE BATTLE AFTER ANOTHER

BOB'S ESCAPE ROUTE

The image shows the interior of a large, arched tent structure, likely a mobile detention facility. The walls are lined with plywood, and the ceiling is made of a light-colored, wrinkled fabric. In the center, a person is seated at a long, dark desk, facing away from the camera towards a bright window. To the left of the desk, there is a desk lamp and some equipment. To the right, there is a large, open metal cage or storage unit. In the foreground, there is a long table covered with a map or a large sheet of paper, and two black office chairs are visible. The overall atmosphere is institutional and somewhat stark.

LOCKJAW'S DETENTION CENTER

BORDER TACTICAL RESPONSE

RIO DUARTE SECTOR

Leading the Guard

Border Tactical Response

Fort Angel Station | Rio Duarte City Station | Sierraville Station | McMetz Station | Blue Field Station | Robertsville Station | Corpus Costello Station | Henderson Station

- POD 1

POD 2

POD 3

POD 4

POD 5

POD 6

POD 7

POD 8

POD 9

POD 10

POD 11

POD 12



FLOOR PLAN
INT. DOGPOND

1 VIEW 1 | 24 MM

2 VIEW 2 | 24 MM

3 VIEW 3 | 24 MM

4 OVERVIEW

R.C. PROJECT DIRECTOR: FTA PRODUCTION DESIGNER: TUCERENA PARRA

Set Name: INT. DOGPOND

Sheet Title: PLAN

Storyboard: MIRA LOMA

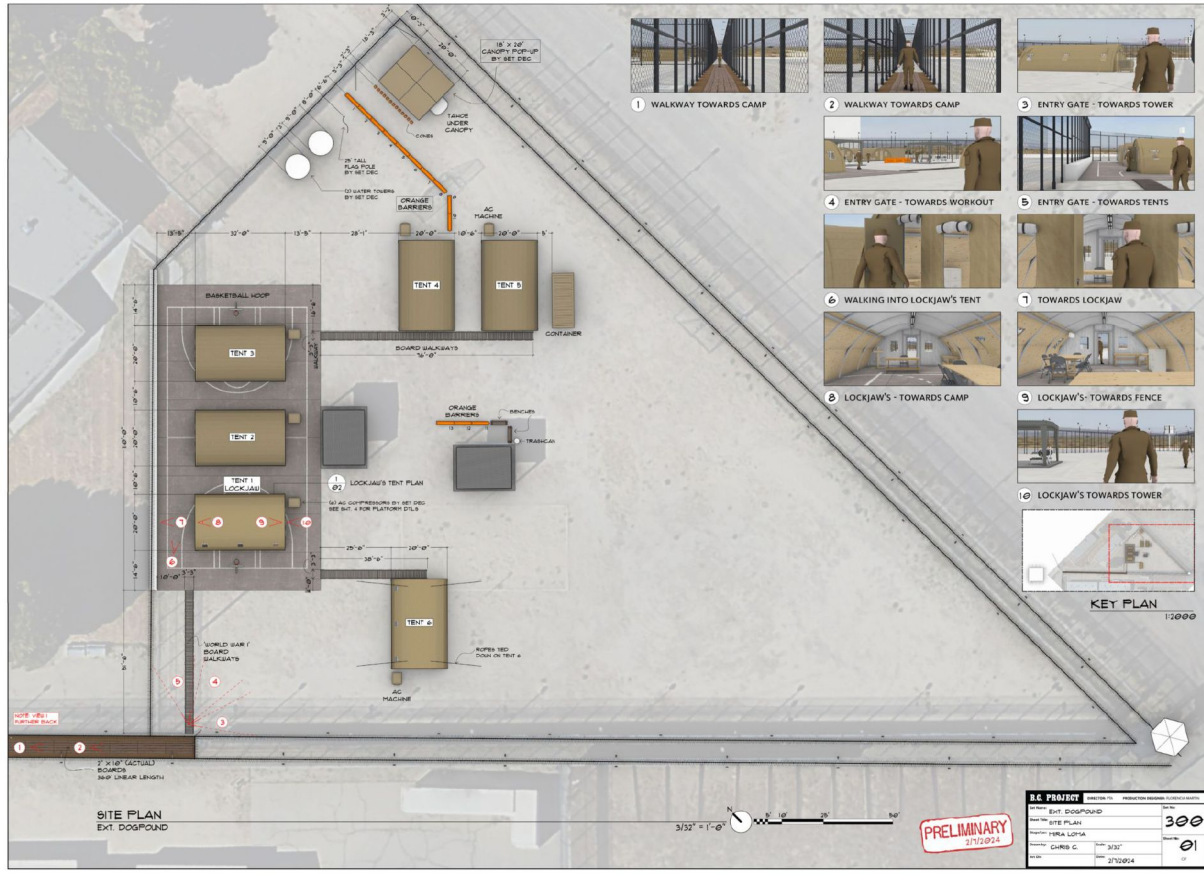
Drawn by: CHRIS C. Scale: 1/4" = 1'-0"

Art Dir: A.J.C. Date: 2/3/2024

Sheet No: 301

OF

PRELIMINARY



ONE BATTLE AFTER ANOTHER

LOCKJAW'S DETENTION CENTER



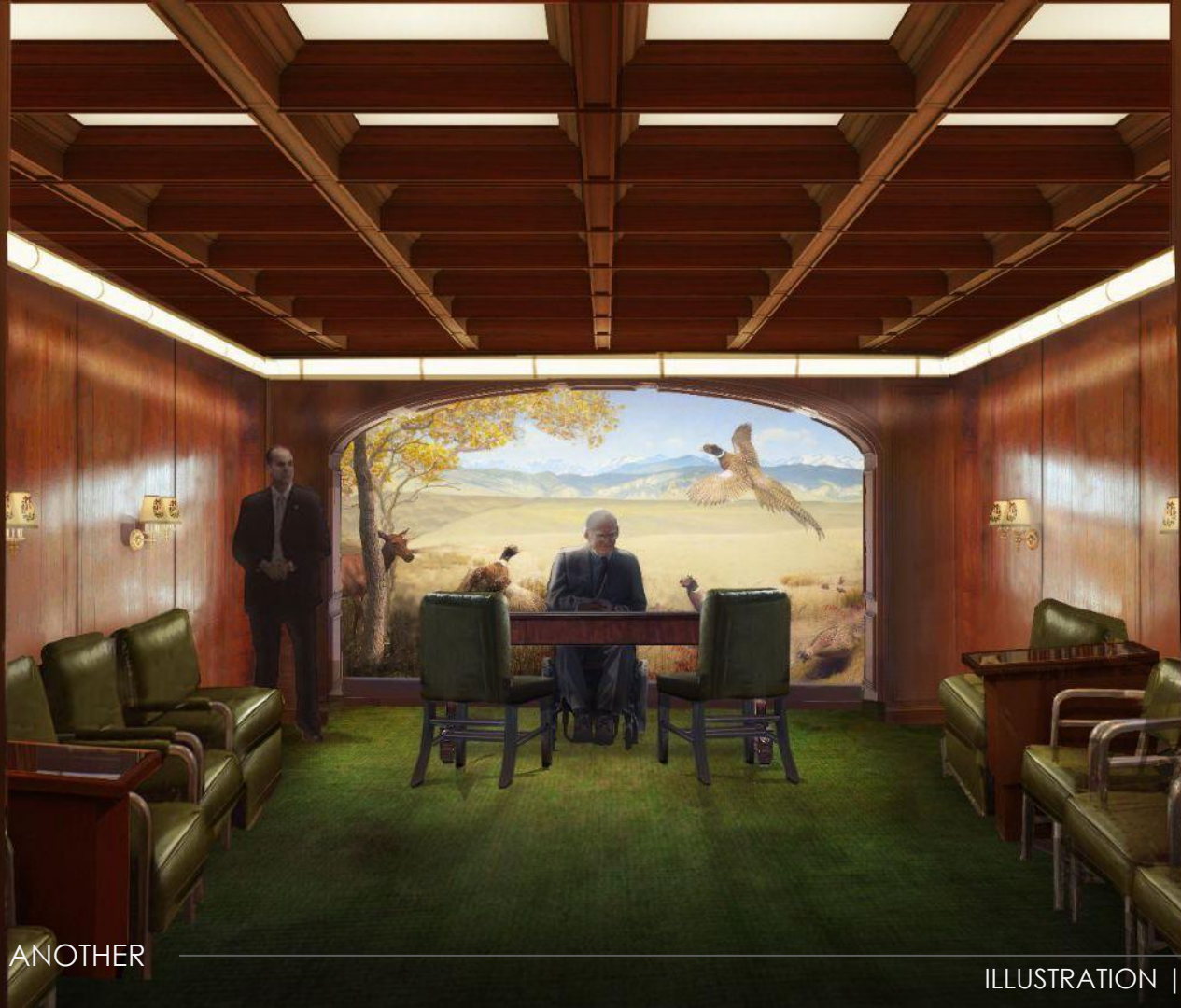
ONE BATTLE AFTER ANOTHER



LOCKJAW'S DETENTION CENTER

CAC MEETING ROOM





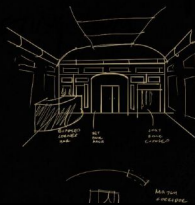
ONE BATTLE AFTER ANOTHER

ILLUSTRATION | CAC MEETING ROOM

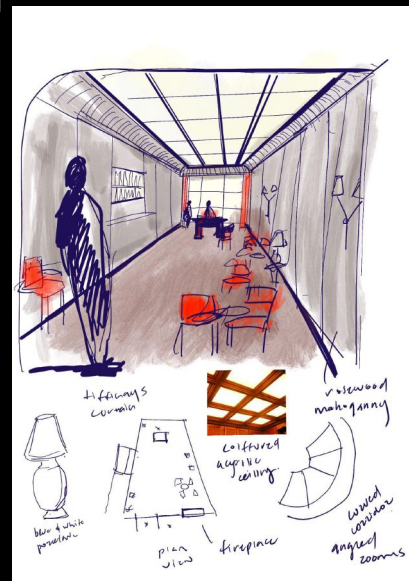
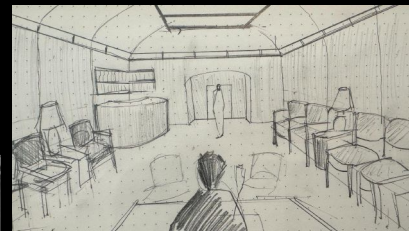


CAC MEETING ROOM

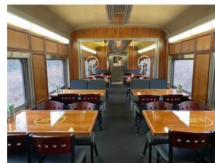
- SIONCES
- EXPOSED BAR
- COAT RACK
- GAP & BASEBOARD & IN BETWEEN EACH PANEL
- ROSEWOOD MAHOAGANY FINISH (HIGH SHINE!)



UNDERGROUND MEETING ROOM



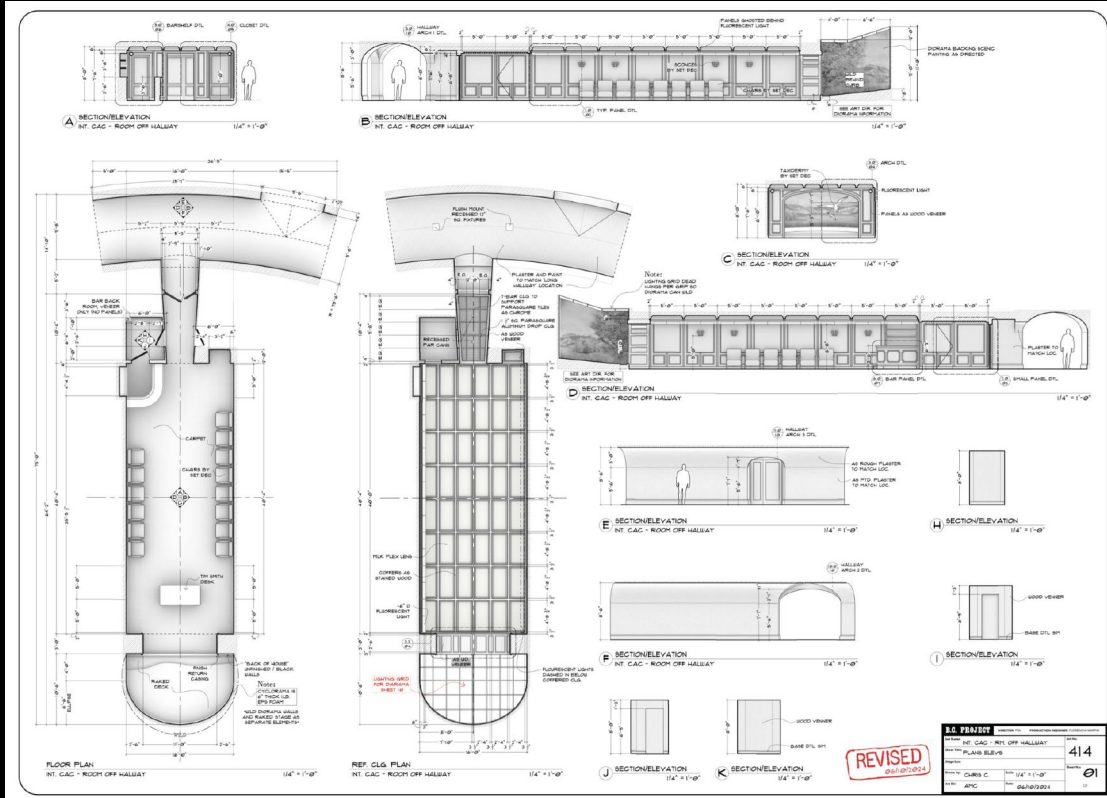
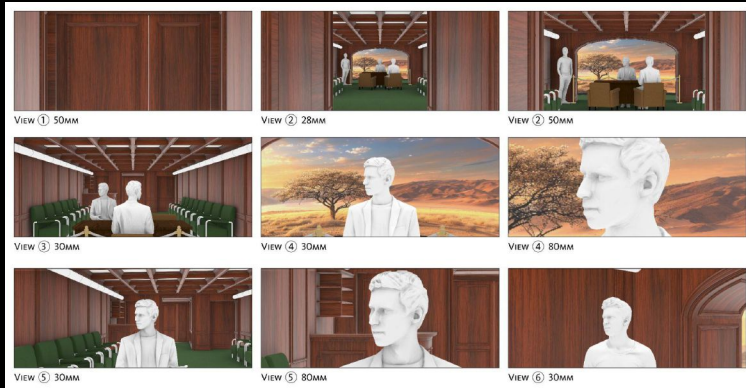
PANEL TRIM® Wall Systems



CAC FINISHES

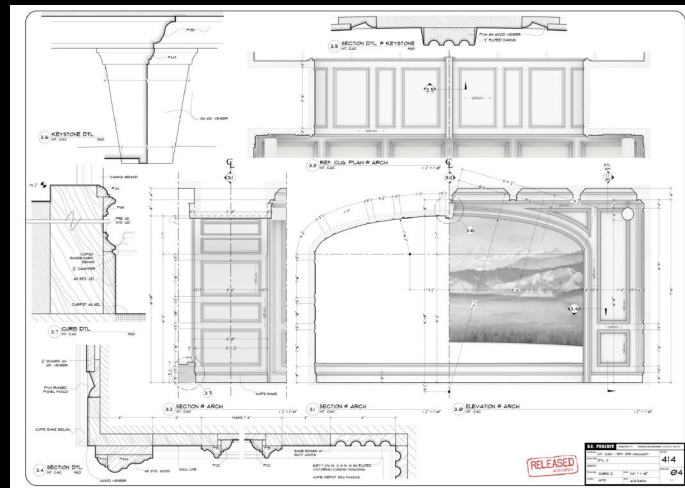
ROSEWOOD 450

CUSTOM DESK





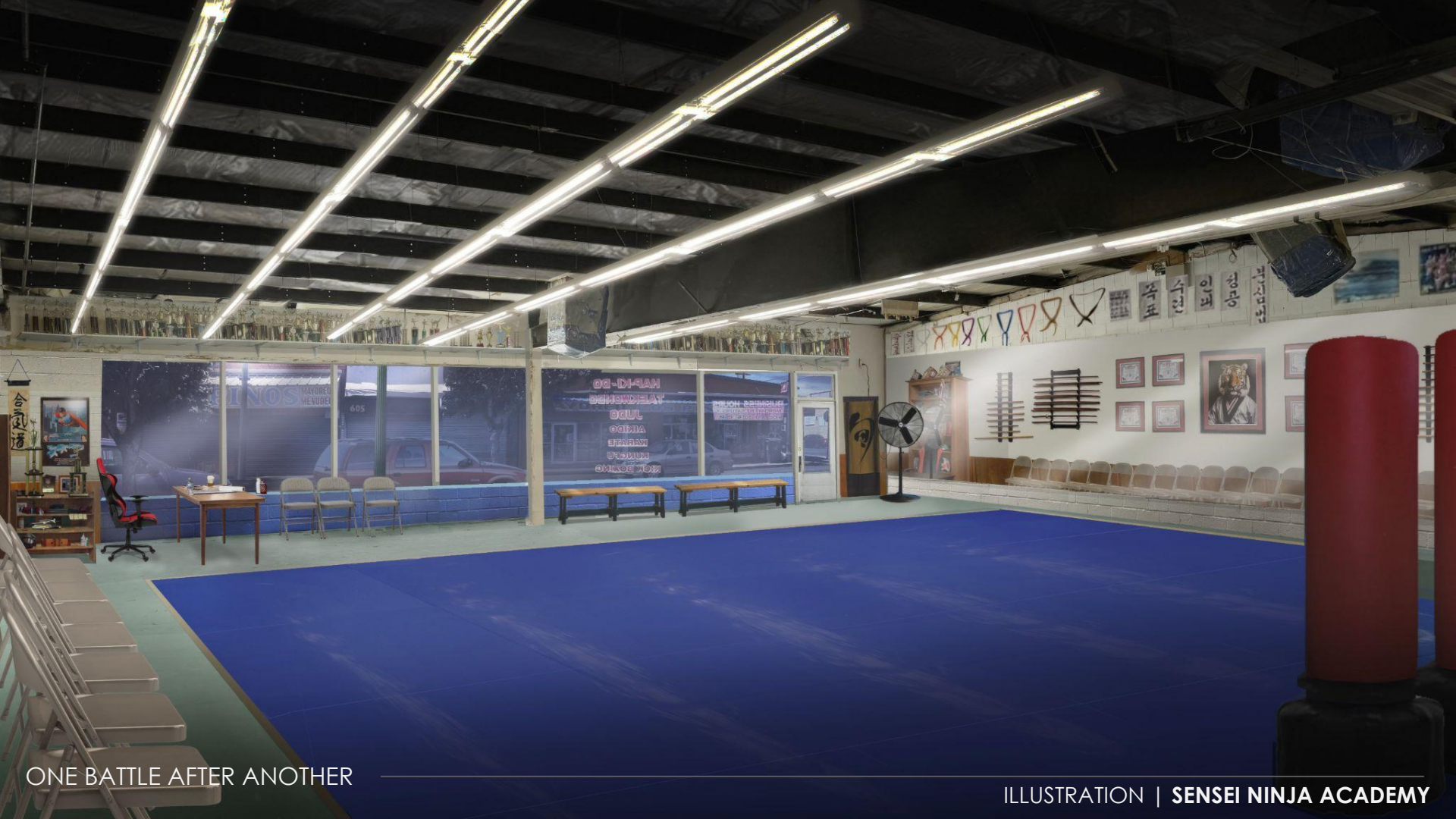
ONE BATTLE AFTER ANOTHER



CAC MEETING ROOM

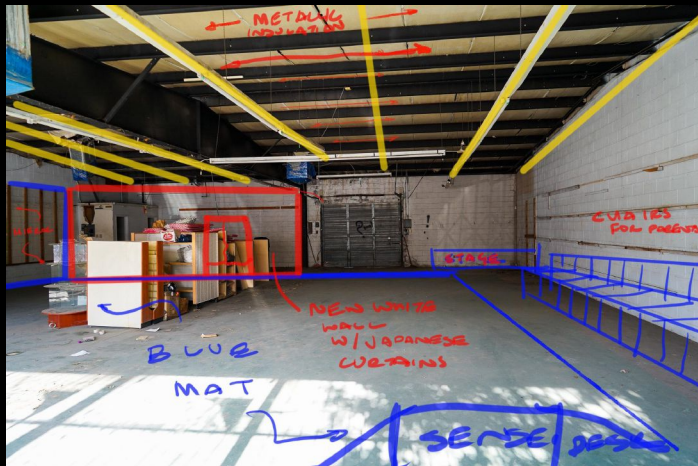
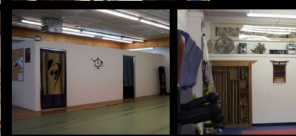
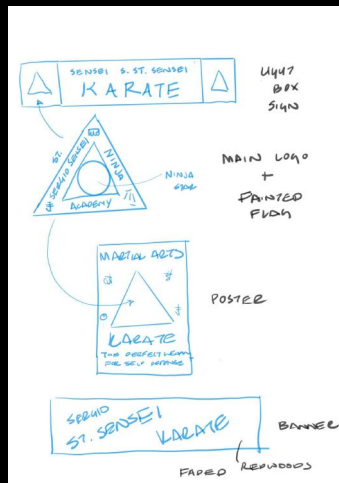
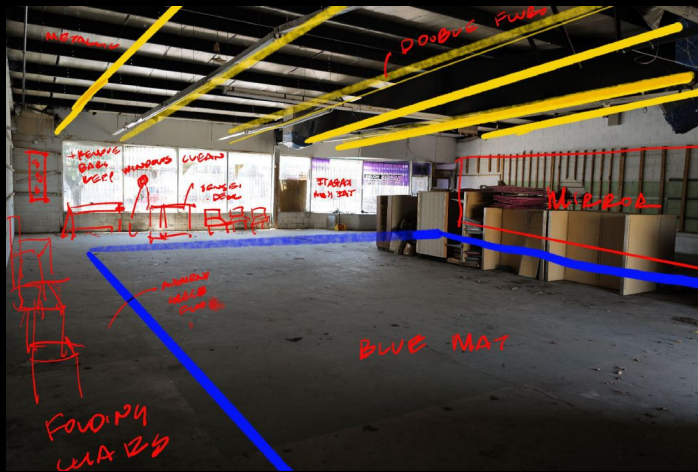
A man with a mustache, wearing a blue and white tracksuit, sits in a red and black chair in a cluttered room. He is surrounded by various items, including a desk with a lamp, a brown bag, and a pair of brown boots. The room has a blue wall and a large window that looks out onto a street at night. On the shelf above the window, there are many trophies and awards. The text "SENSEI ST. CARLOS NINJA ACADEMY" is overlaid in the center of the image.

SENSEI ST. CARLOS NINJA ACADEMY



ONE BATTLE AFTER ANOTHER

ILLUSTRATION | SENSEI NINJA ACADEMY



ONE BATTLE AFTER ANOTHER

SENSEI NINJA ACADEMY



ONE BATTLE AFTER ANOTHER

SENSEI NINJA ACADEMY



ONE BATTLE AFTER ANOTHER

SENSEI NINJA ACADEMY



ACTIVATE
INSTRUCTOR
PERSONALITADO
ADULTOS
 8:00 A.M. A 9:00 A.M.
CARDIO
RESISTENCIA
MEJORA TU
CONDICION FISICA
MEJORA TU SALUD
TARDE
POR NIÑOS
 4:00 A 5:00 P.M.
 5:00 A 6:00 P.M.
JÓVENES Y ADULTOS
 6:00 A 7:00 P.M.
 7:00 A 8:00 P.M.



ONE BATTLE AFTER ANOTHER

SENSEI NINJA ACADEMY



ONE BATTLE AFTER ANOTHER

SENSEI NINJA ACADEMY

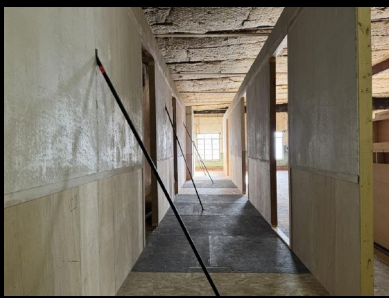


SENSEI ST. CARLOS APARTMENT



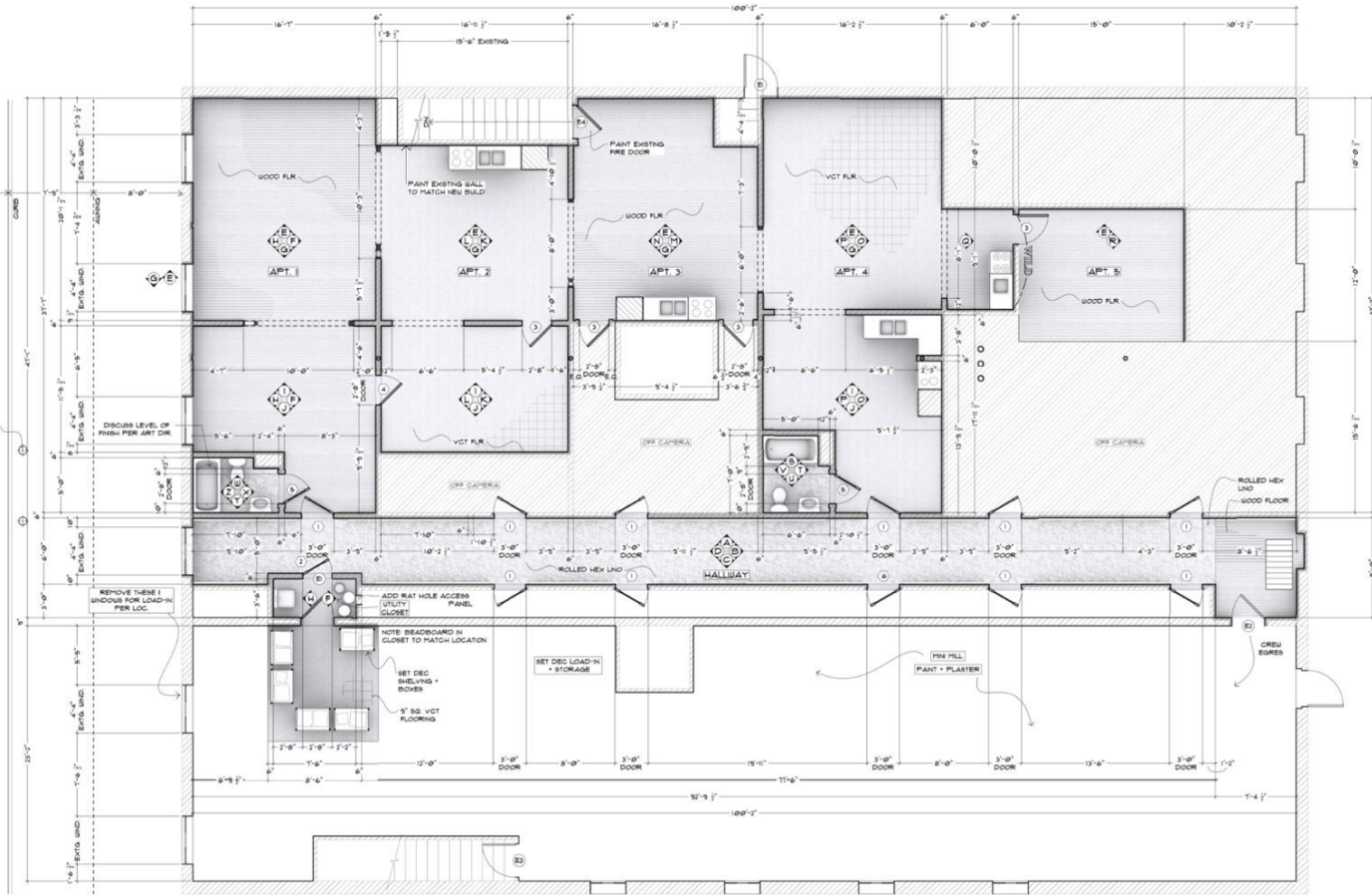
ONE BATTLE AFTER ANOTHER

ILLUSTRATION | **SENSEI FAMILY UPSTAIRS APARTMENT**



△ EL PASO ST.

STREET LIGHT



FLOOR PLAN

1/4" = 1'-0"

ONE BATTLE AFTER ANOTHER

SENSEI FAMILY UPSTAIRS APARTMENT



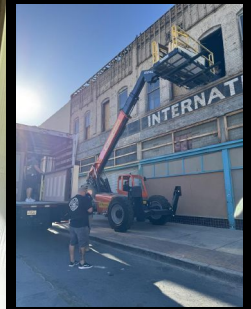
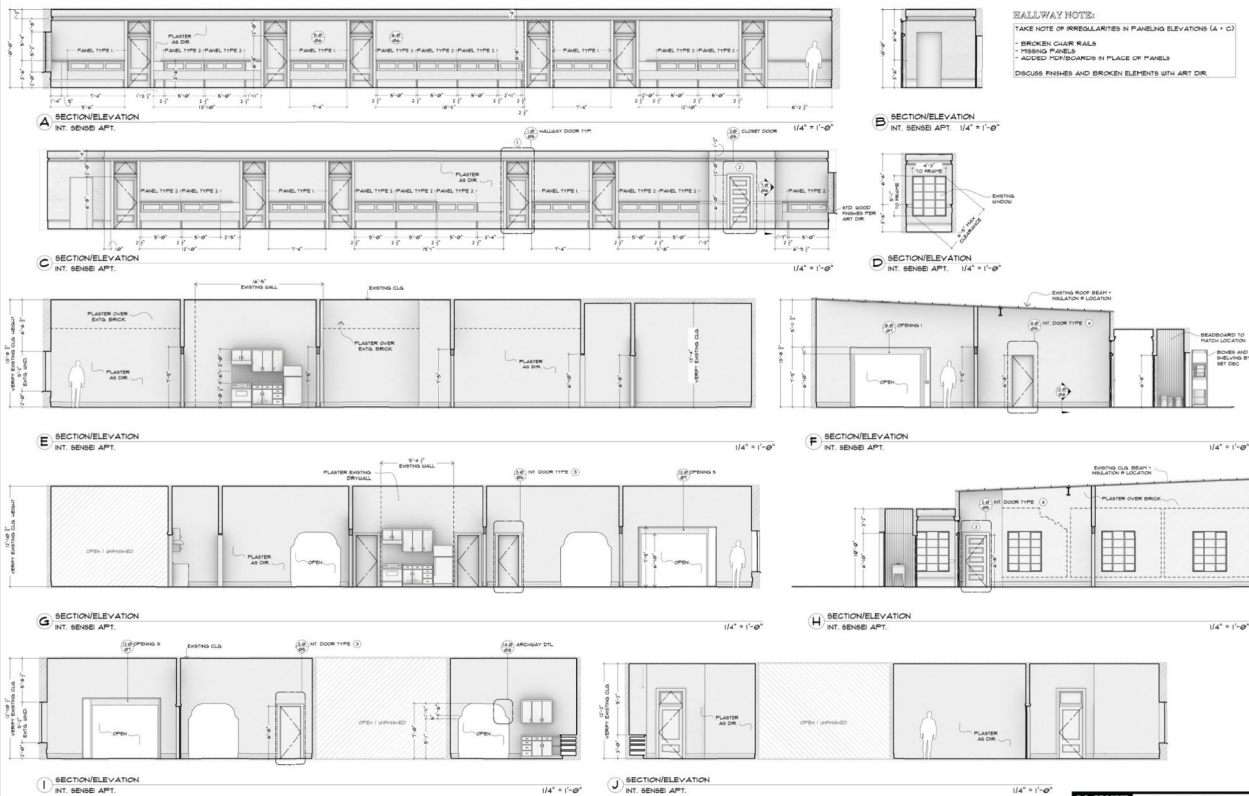
ONE BATTLE AFTER ANOTHER

SENSEI FAMILY UPSTAIRS APARTMENT



ONE BATTLE AFTER ANOTHER

SENSEI FAMILY UPSTAIRS APARTMENT



ONE BATTLE AFTER ANOTHER

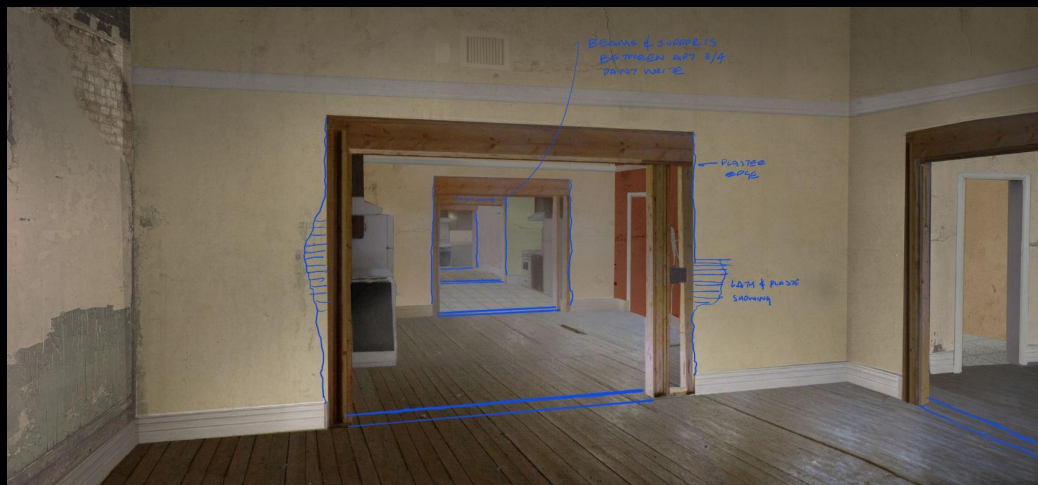
SENSEI FAMILY UPSTAIRS APARTMENT





ONE BATTLE AFTER ANOTHER

ILLUSTRATION | **SENSEI FAMILY UPSTAIRS APARTMENT**



ONE BATTLE AFTER ANOTHER

CONCEPT | SENSEI FAMILY UPSTAIRS APARTMENT



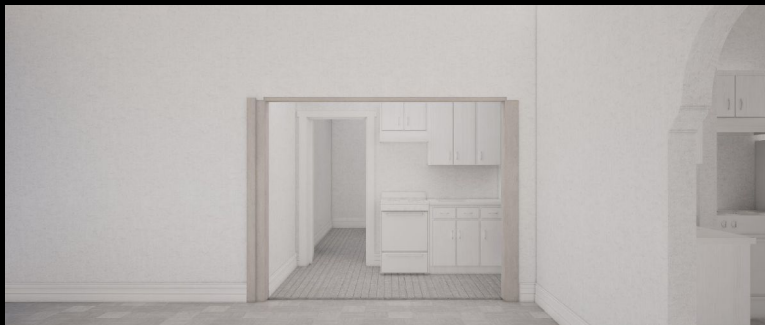
ONE BATTLE AFTER ANOTHER

SENSEI NINJA APARTMENT



ONE BATTLE AFTER ANOTHER

SENSEI NINJA APARTMENT



ONE BATTLE AFTER ANOTHER

SENSEI NINJA APARTMENT



ONE BATTLE AFTER ANOTHER

SENSEI NINJA APARTMENT



ONE BATTLE AFTER ANOTHER

SENSEI NINJA APARTMENT



ONE BATTLE AFTER ANOTHER



CONCEPT | SERGIO ST.CARLOS SENSEI APARTMENT



ONE BATTLE AFTER ANOTHER

ILLUSTRATION | **SERGIO ST.CARLOS SENSEI APARTMENT**



ONE BATTLE AFTER ANOTHER

SERGIO ST.CARLOS SENSEI APARTMENT



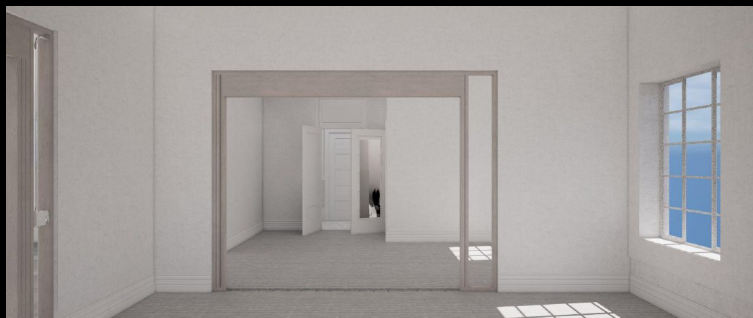
ONE BATTLE AFTER ANOTHER

SERGIO ST.CARLOS SENSEI APARTMENT



ONE BATTLE AFTER ANOTHER

SENSEI NINJA APARTMENT



ONE BATTLE AFTER ANOTHER

SERGIO ST.CARLOS SENSEI APARTMENT



ONE BATTLE AFTER ANOTHER

SERGIO ST.CARLOS SENSEI APARTMENT



ONE BATTLE AFTER ANOTHER

SENSEI NINJA APARTMENT

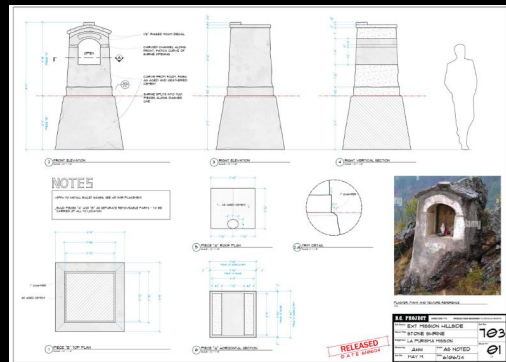
A wide-angle, high-angle shot of a church interior. The space is a large nave with a high ceiling and white walls. On the left, a series of small, arched windows allow light to filter in. A large, ornate chandelier hangs from the ceiling. Along the left wall, several small framed pictures are displayed. A woman in a dark jacket and a light-colored skirt stands in the center of the nave, looking towards the altar. The floor is made of large, light-colored stone tiles. In the background, the altar area is visible, featuring a blue and gold decorative scheme and a large, ornate altar. A person is kneeling in prayer near the altar. The overall atmosphere is quiet and contemplative.

SISTERS OF THE BRAVE BEAVER



ONE BATTLE AFTER ANOTHER

SISTERS OF THE BRAVE BEAVER



ONE BATTLE AFTER ANOTHER

SISTERS OF THE BRAVE BEAVER



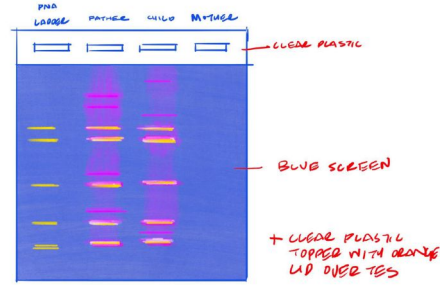
ONE BATTLE AFTER ANOTHER

SISTERS OF THE BRAVE BEAVER

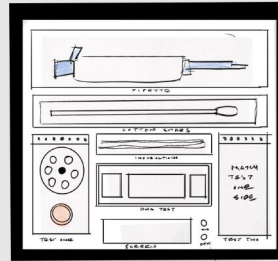


ONE BATTLE AFTER ANOTHER

SISTERS OF THE BRAVE BEAVER



STEP 1 - SWAB (PEEL OPEN)
STEP 2 - INSERT INTO TEST TUBE
SWIRL



MINI
CENTRIFUGE
NEEDS TO
SPIN →
COULD HAVE



4. PIPETTE CONT.
LIQUID INTO TEST
STRIP

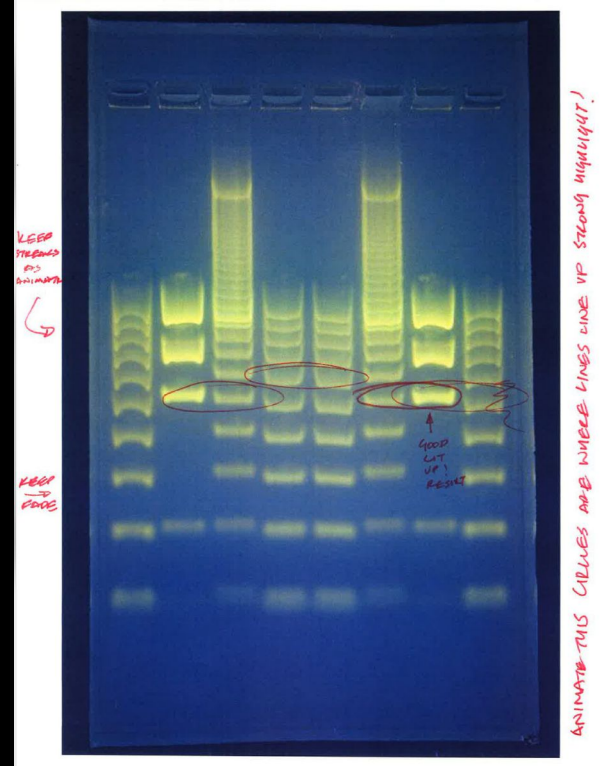
5. TEST STRIP GETS
TEST FROM BOTH
ENDS + NESTS IN
MIDDLE

INDIVIDUAL NESTED
LONG! SMALL FOR LARVAL STAGE
X4 PAWERS (10+ MORE) INSIDE

FOUSED UP INSTRUCTIONS
- 1 SIDE ENGLISH / SPANISH
WITH ILLUSTRATIONS LIKE A
COVID TEST.

FINISH

* WHITE PLASTIC WITH
ORANGE OR BLUE
TOWELS FOR MEDICAL
SUPPLIES



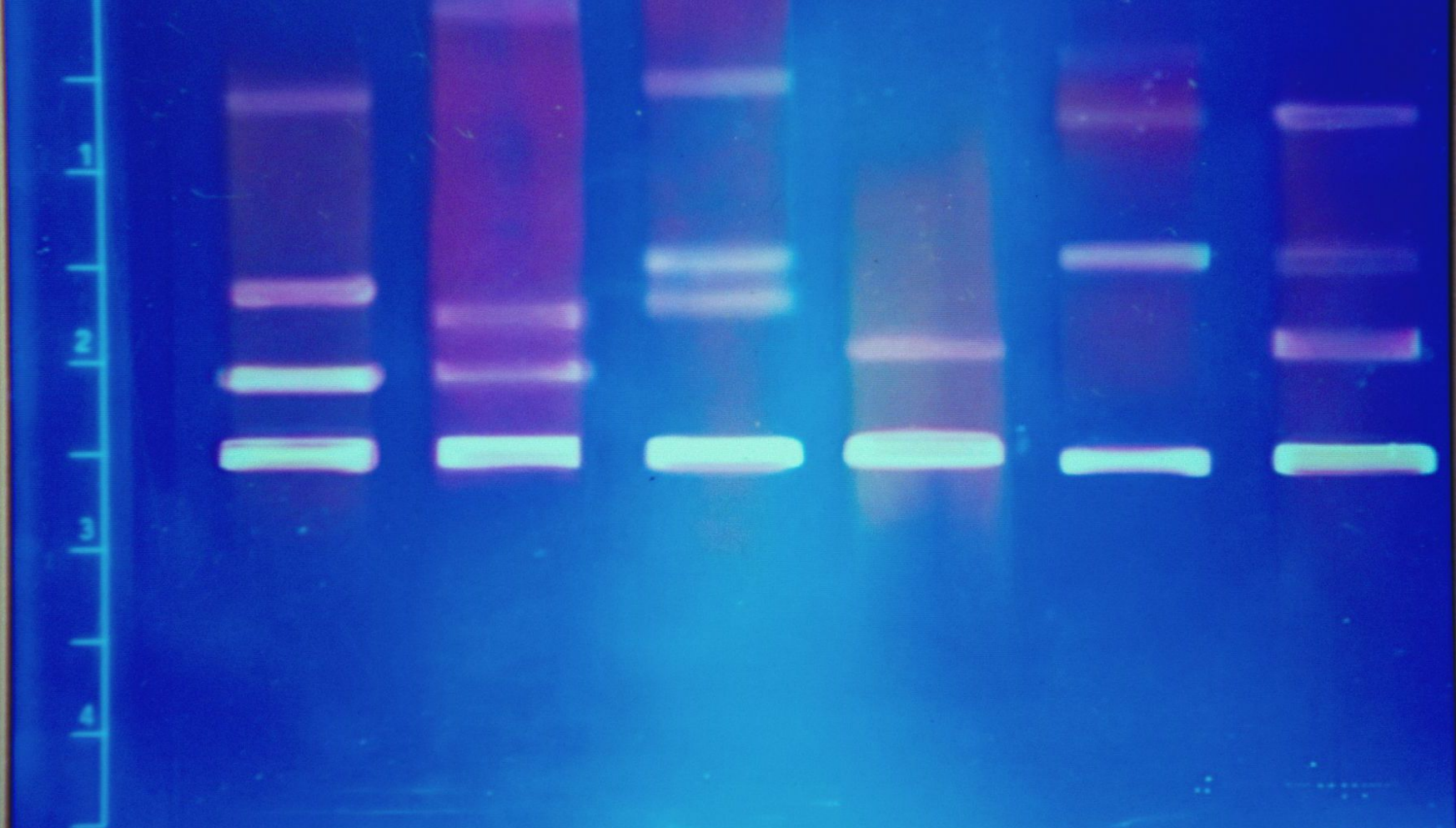
ANIMATE THIS CELLS ARE WHERE LINES LINE UP STRONG HIGHLIGHT!



SWIFTKIT I.D. SYSTEM
SK0100-96-F-EB78
PCR PATERNITY FIELD KIT
BORLAUG BY SCHRAGE

ONE BATTLE AFTER ANOTHER

SISTERS OF THE BRAVE BEAVER



ONE BATTLE AFTER ANOTHER

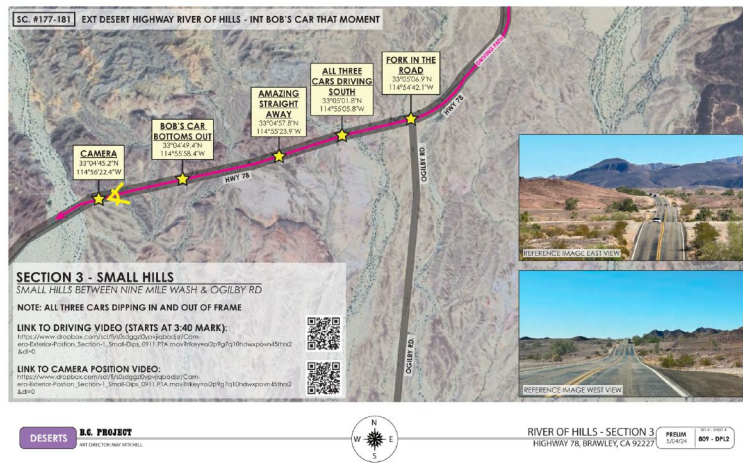
SISTERS OF THE BRAVE BEAVER

An aerial photograph of a two-lane asphalt road that winds through a dry, hilly desert landscape. The road is marked with a double yellow line in the center and white lines on the edges. A white car is visible on the road in the lower third of the frame, and a blue car is further ahead near the top of the frame. The surrounding terrain is sandy and covered with sparse, low-lying green and brown shrubs. The sky is a clear, pale blue. Overlaid in the center of the image is the text "RIVER OF HILLS FINALE" in a large, white, sans-serif font.

RIVER OF HILLS FINALE

LAST REVISED: 05.14.24 AHH

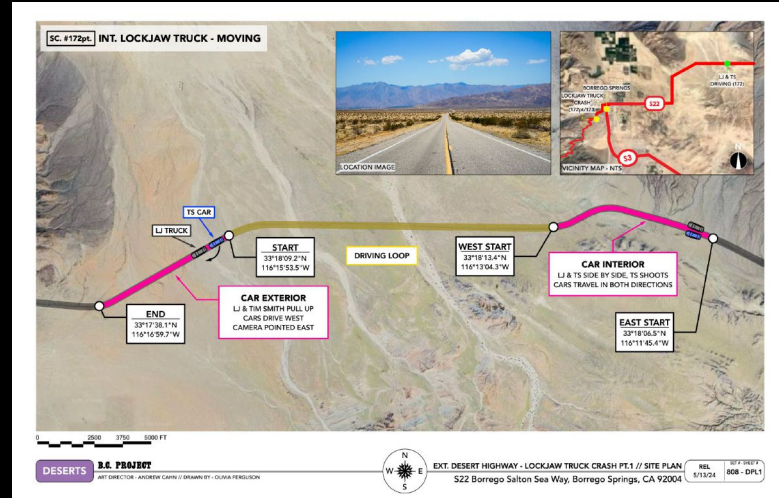
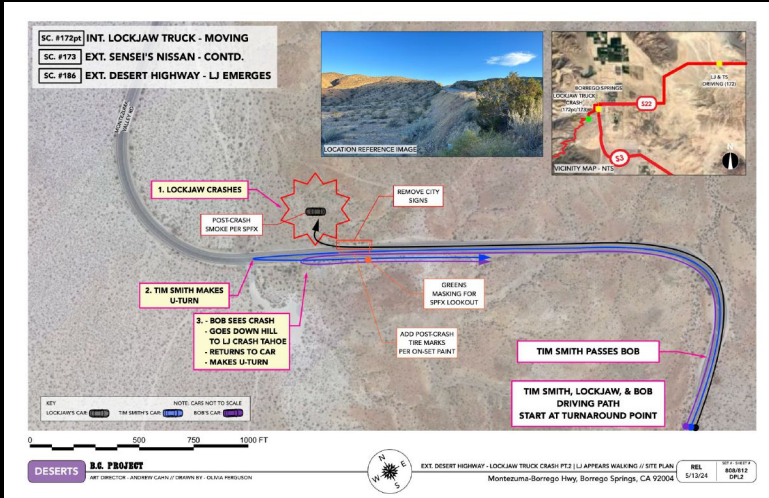
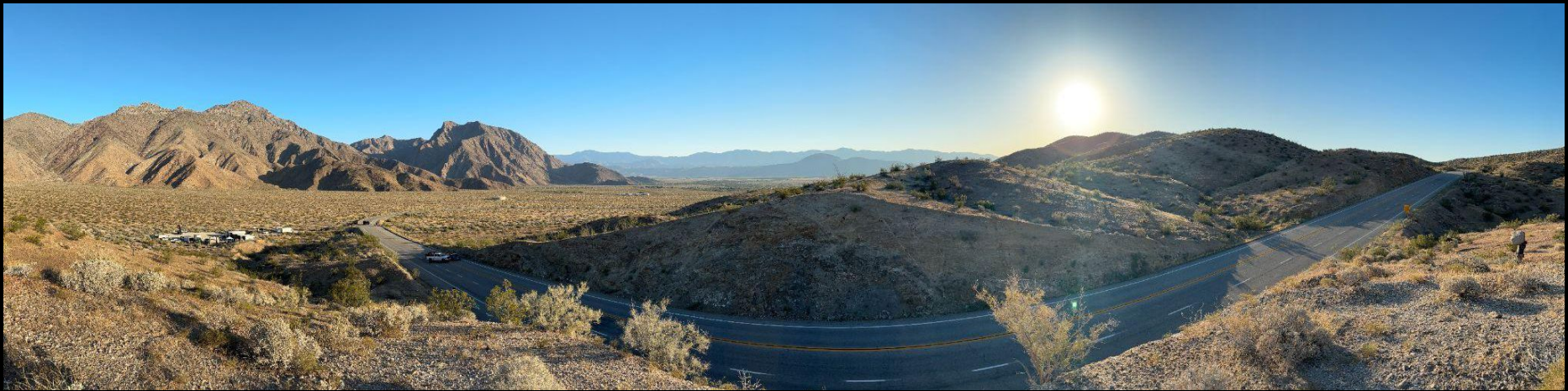






ONE BATTLE AFTER ANOTHER

RIVER OF HILLS



ONE BATTLE AFTER ANOTHER

RIVER OF HILLS



ONE BATTLE AFTER ANOTHER

RIVER OF HILLS



TIM SMITH - 2013 MUSTANG SHELBY



TIM SMITH - 1968 SHELBY MUSTANG - CAC HOUSE



DEANDRA SUPED UP VAN



LOCKJAW MKU TAHOE

BC PROJECT



AVANTI - DODGE CHARGER

HERO PICTURE CARS



ONE BATTLE AFTER ANOTHER

RIVER OF HILLS

ONE BATTLE AFTER ANOTHER

Production Designer
FLORENCIA MARTIN

Supervising Art Director
ANDREW MAX CAHN

Art Directors
MAY MITCHELL
AJ CISNEROS

Assistant Art Director
OLIVIA A.T. FERGUSON

Set Designer
CHRIS CORTNER

Graphic Designers
KERRY HYATT
HILARY AMENT

Illustrator
JOANNA BUSH

Art Department Coordinator
STEPHANIE FREY

Researchers
HEATHER ELWELL

Art Department PAs
ANNIE HARRIS
MAX STRYKER
MADISON FEINSTEIN
FELICIA COWLEY

Construction Coordinator
ANTHONY SYRACUSE

General Foreman
RANDY SYRACUSE

Construction Foremen
CHRIS CAMPBELL
TIMOTHY VIERRA

Paint Supervisor
BILLY GUERRERO

Greens Foreman
CHARLIE JARAMILLO

Plasterer Foreman
JASON SOLES

On Set Painter
CHRIS SAMP

Property Master
MATTHEW CAVALIERO
ROBBIE DUNCAN

Assistant Property Masters
BRAD EINHORN
PAUL KITCHEN JR.
KIM RICHEY
JEFREY SHEBROE

Set Decorator
ANTHONY CARLINO

Assistant Set Decorator
HELEN KOZORA-TELL


Leadperson
TYLER KETTENBURG

Set Dec Gang Boss
MARK BOUCHER
BENTON TEDLIE

Buyers
SAM TELL
WALTER MARTINEZ
SARA GARDNER-GAIL
NICOLE GOLD

On Set Dresser
JEREMY CISNEROS

Supervising Location Manager
MICHAEL GLASER

A still from a film showing two men in a hallway. The man on the left is wearing a black beanie, sunglasses, and a red and black plaid jacket. He has his hands clasped in front of him. The man on the right is wearing a blue denim jacket and white pants. He is holding a black shoe with a white sole and a metal ring at the heel. The background is a plain wall with a door and a wooden baseboard.

Thank you for your consideration.



