

Dir. Tom Gormican

DP. Nigel Bluck

PD. Steven Jones-Evans

Sony Pictures

ANACONDA

“

The snake was like a metaphor for our lives at that moment Like life is coming at you and hunting you and forcing you like your parents health insurance and stuff.

_____ Kenny

Art Crew

Steven Jones-Evans

Production Designer

Marita Musset

Supervising Art Director

Andrew Chan

Art Director

Andrew Kattie

Art Director

Mandi Bialek

Location Art Director

Christopher Bruce

Set Decorator

Brianna Patrice Russell

Set Designer

Aaron Poon

Set Designer

Teresa Meoli

Set Designer

Brian Carlin

Graphic Artist

Greg Hajdu

Construction Co-ord

Michael Swingle

Head Scenic

A story about a bunch of middle aged buddies who rekindle their teenage passion for indie horror filmmaking, raise a few bucks and head to the Amazon only to find a world they never dreamed of. Set in Buffalo, LA and Brazil and shot in Queensland, Australia.



Buffalo, NY

Where the story begins.....

Doug's House

Location and concept



Doug's office

Doug works as a wedding video maker in a mom & pop, strip mall, Industrial video business. Obsessed with the horror movies he often pitches wedding video ideas dressed up in the horror genre to unsuspecting clients. He has a B+ life on good days.





Doug's Wedding Video Office Concept

Doug's Work

One of Doug's better wedding video studio sets.



Griff's Mum's House

His best mate Griff's mum's house in Buffalo.



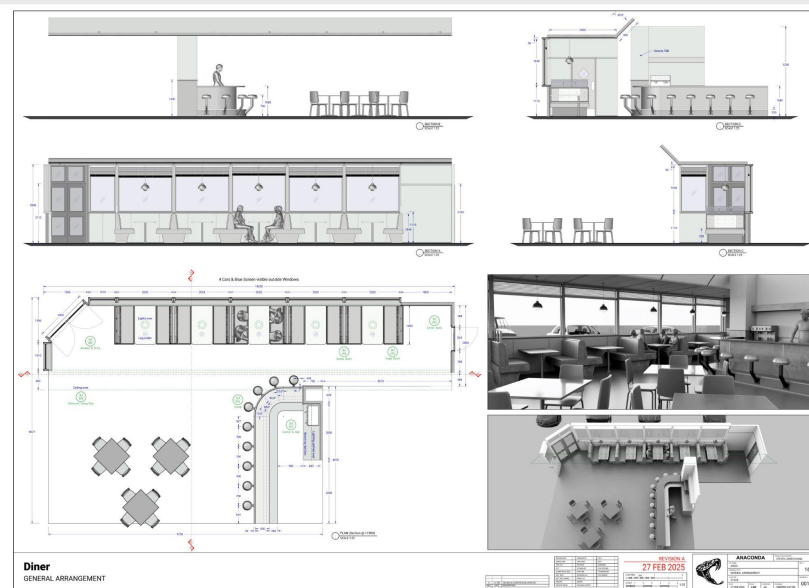


Griff's Grandmother's Assisted Living Facility Set



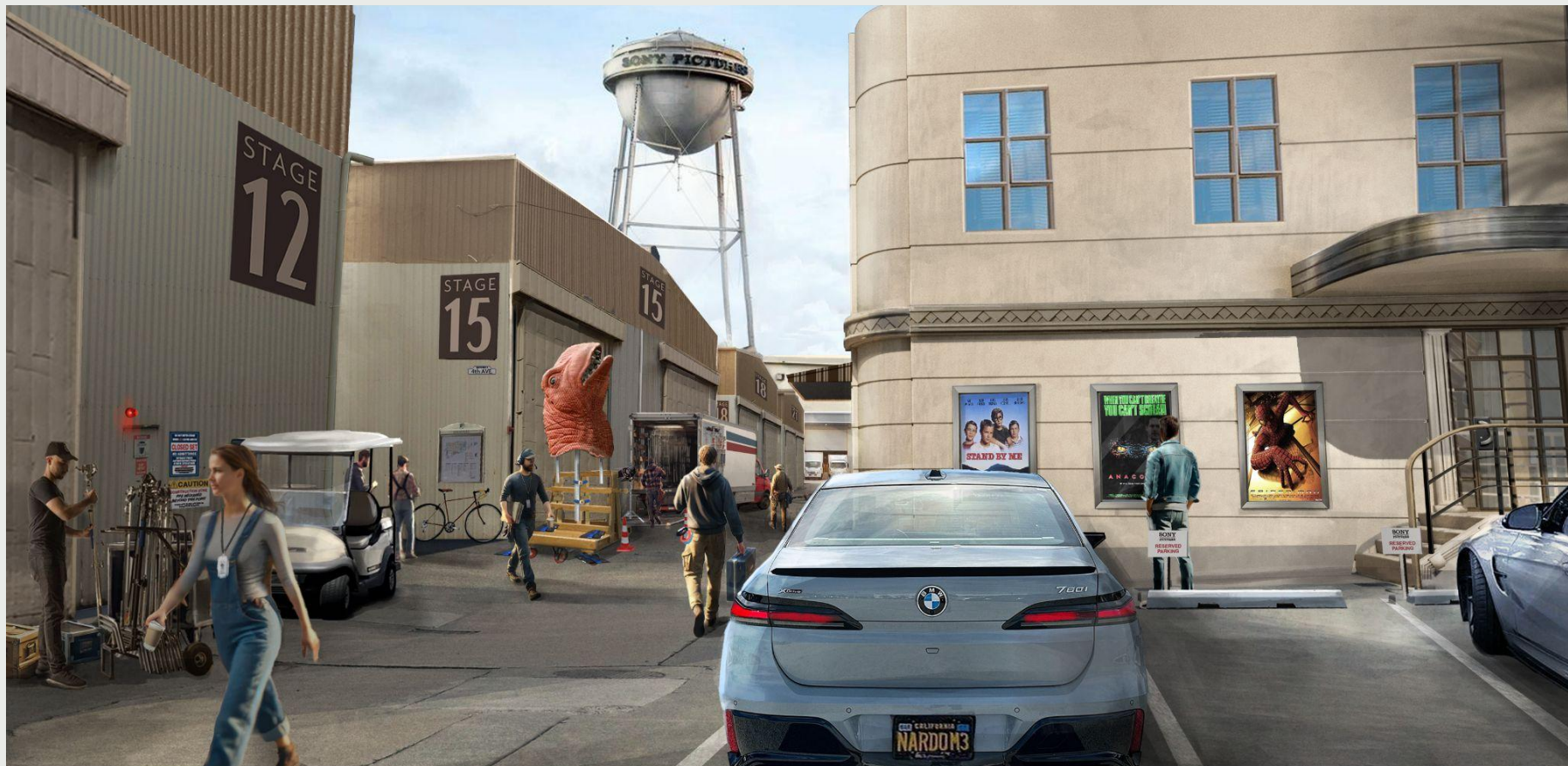
Diner

Built as a set for one scene where the buddies hatch a plan to resurrect their indie version of their horror movie, THE ANACONDA



Los Angeles

Where the story takes a small
detour.....



Sony Lot

An art deco, administrative building facade was built into a Gold Coast industrial estate location to form the basis of the studio lot. VFX set extension to facade, plus sound stage graphics, color change and studio doors added. Additional greens, vehicles and set dec.



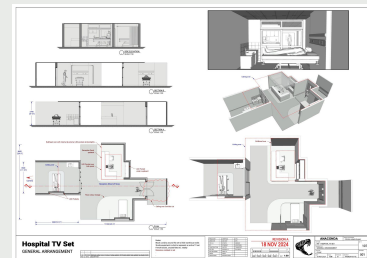
Griff's Shared Apt

Griff's rather sad small, west hollywood apartment shared with another struggling actor / part time drug dealer. Location with kitchen, 70's arch and popcorn ceiling built in



Griff's Daytime TV Hospital Show Set

Set build for one scene where Griff gets sacked from his only acting job. Modelled along the lines of a generic Miami Hospital TV show.



Rio Amazonas

Where the story ends.....nearly



Hotel facade

A number of facades and market structures were built around an existing down on its heel marina location including this Colonial Portuguese style Hotel facade



Amazon Port town

Market structure and bar set build









Riverboat



Many scenes in the movie take place on an old riverboat. Australia doesn't have any large rivers where you'd find a history of riverboats, so we decided to build one, drawing upon vernacular Brazilian and classic 1920's US still water yacht's for our design.





Benedita (floaty)

We actually built 2, a floaty one and a studio one for night shooting because no one really wanted to shoot nights on a river



Benedita (studio)

This included the main lounge / saloon,
upper + rear deck, plus upper cabin. 3
other cabins were built as separate sets



Construction

We built the river boat as a wet hull, essentially a steel frame pontoon filled with hard coated polystyrene for buoyancy then shaped with timber formers to get a subtle curve and sleekness to the hull. It was propelled by two enclosed outboard motors via remote joystick steering

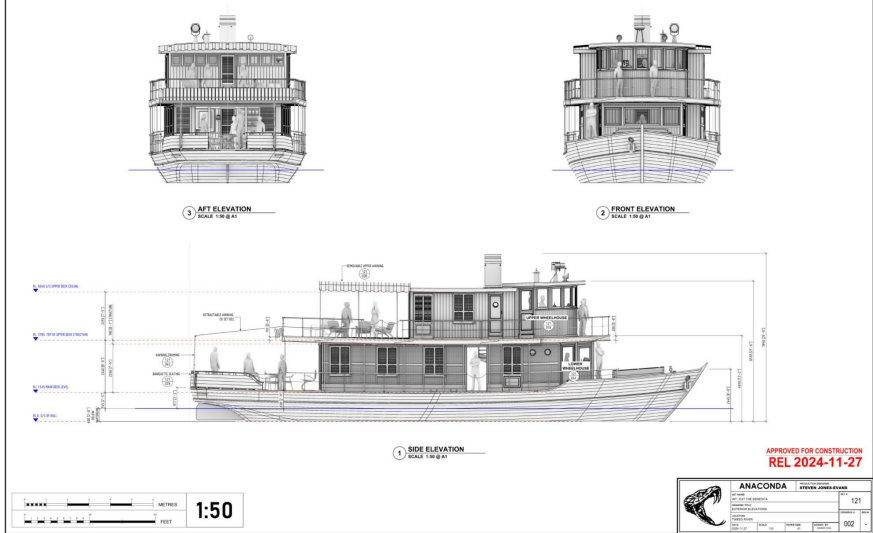


Plans

A full int/ext floating boat including 3 cabins, 2 wheelhouses, lounge / saloon, upper and rear decks, plus a stage version for night shooting

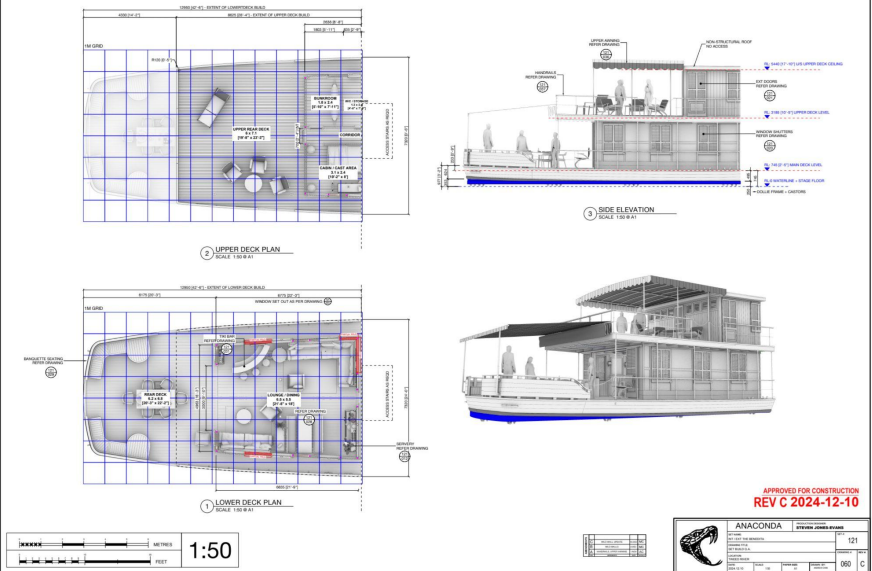
INT / EXT THE BENEDITA | EXTERIOR ELEVATIONS

121 - 002



INT / EXT THE BENEDITA | SET BUILD G.A.

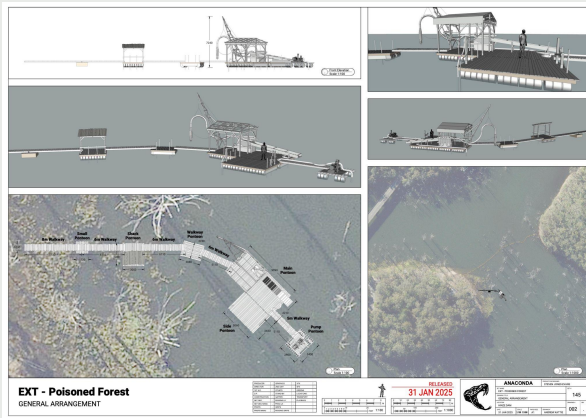
121 - 060











Amazon Gold Mining Dredge

Floating set build on a large dam
location



Boat Graveyard

A movie set for Sony's official version of ANACONDA the gang come across in the jungle for the finale of the movie. Recently abandoned by the film crew due to the monster Anaconda snake attack

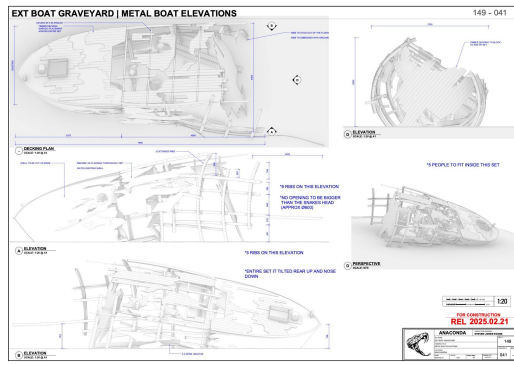
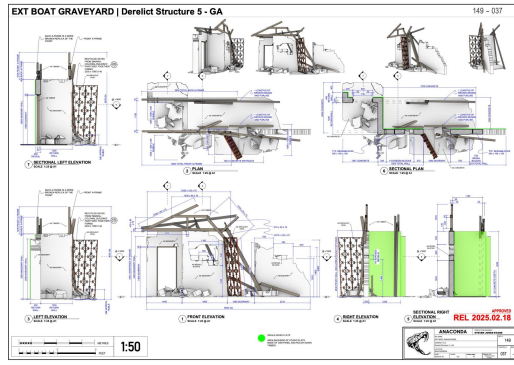


ANACONDA

BOAT GRAVEYARD GATES MOVIE SET OPTION 4

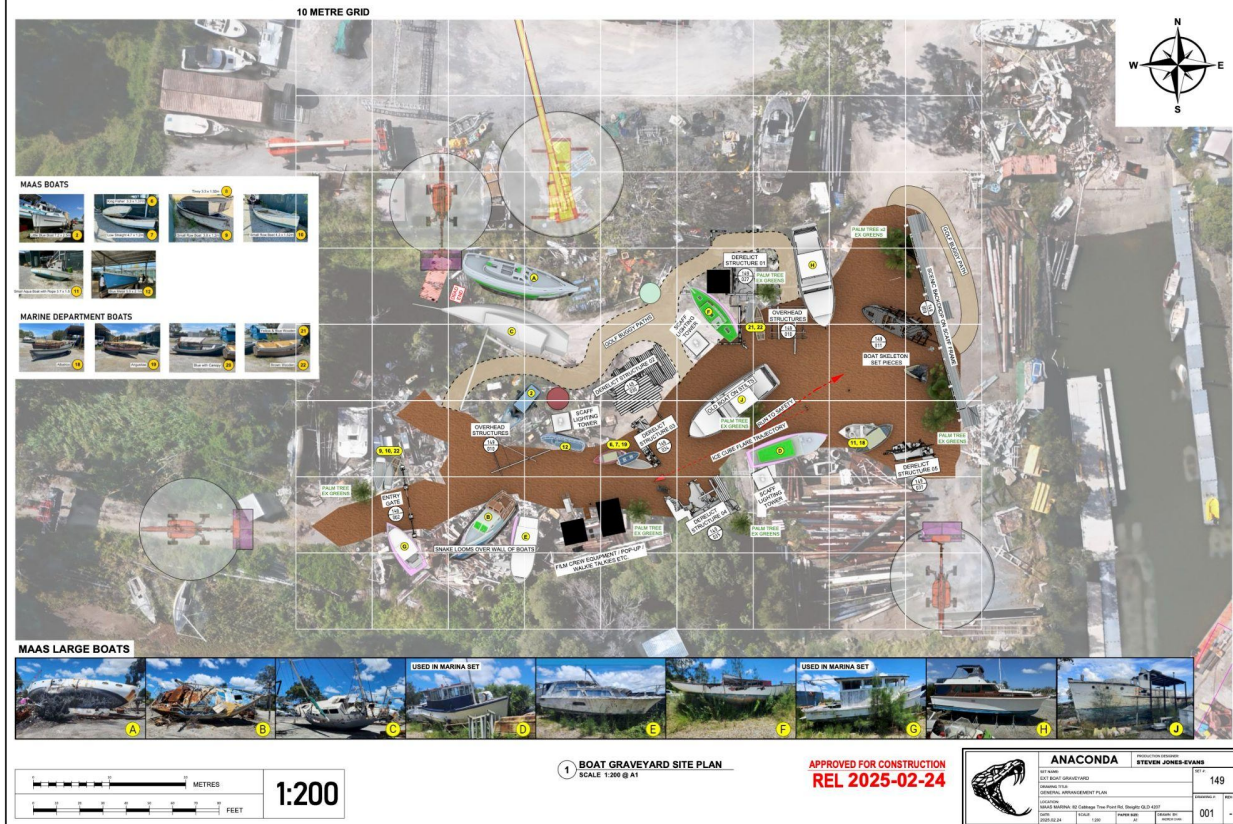
OTG



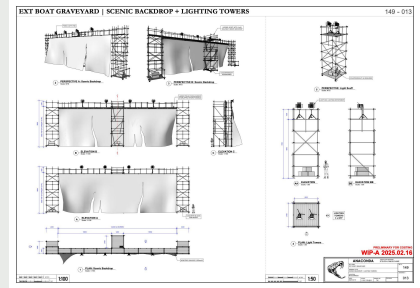


EXT BOAT GRAVEYARD | GENERAL ARRANGEMENT PLAN

149 - 001







Scenic backing Concept





