

Palm Royale

SEASON 2

FOR YOUR ADG AWARDS
CONSIDERATION

OUTSTANDING
PRODUCTION
DESIGN

ONE HOUR PERIOD
SINGLE-CAMERA SERIES



Proudly a Los Angeles based production employing ADG members and local union employed artisans to craft the bold, vividly hued, and layered backdrop of 1970 Palm Beach for Season 2 of Palm Royale.

PRODUCTION DESIGNER
JON CARLOS

ART DIRECTOR
AMELIA BROOKE

ART DIRECTOR
MARK TAYLOR

ART DIRECTOR
RACHEL AGUIRRE

ASSISTANT ART DIRECTOR
MICHAEL NAVARRO

ASSISTANT ART DIRECTOR
JAYME GREENE

ASSISTANT ART DIRECTOR
REBEKAH KILLAM

ASSISTANT ART DIRECTOR
ELAINE JEN

GRAPHIC DESIGNER
EVAN REGESTER

GRAPHIC DESIGNER
SIMON JONES

SET DECORATOR
ELLEN REEDE

SET DESIGNER
ANDY BROOMELL

SET DESIGNER
ANDY HULL

SET DESIGNER
JAMES BOLENBAUGH

SET DESIGNER
EMMA SPARER

SET DESIGNER
ANDREW LEITCH

ILLUSTRATOR
AUGUSTO BARRANCO

ILLUSTRATOR
ANDREA DOPASO



INT. PALM ROYALE AUDITORIUM - DRUG DREAM | STAGE BUILD CONCEPT ILLUSTRATION

illustrated by Augusto Barranco, ADG



INT. PALM ROYALE AUDITORIUM - DRUG DREAM | BUILT ON STAGE AT WARNER BROS.

graphic design by Evan Regester, drafted by set designer Andy Hull, & illustrated by Augusto Barranco, ADG



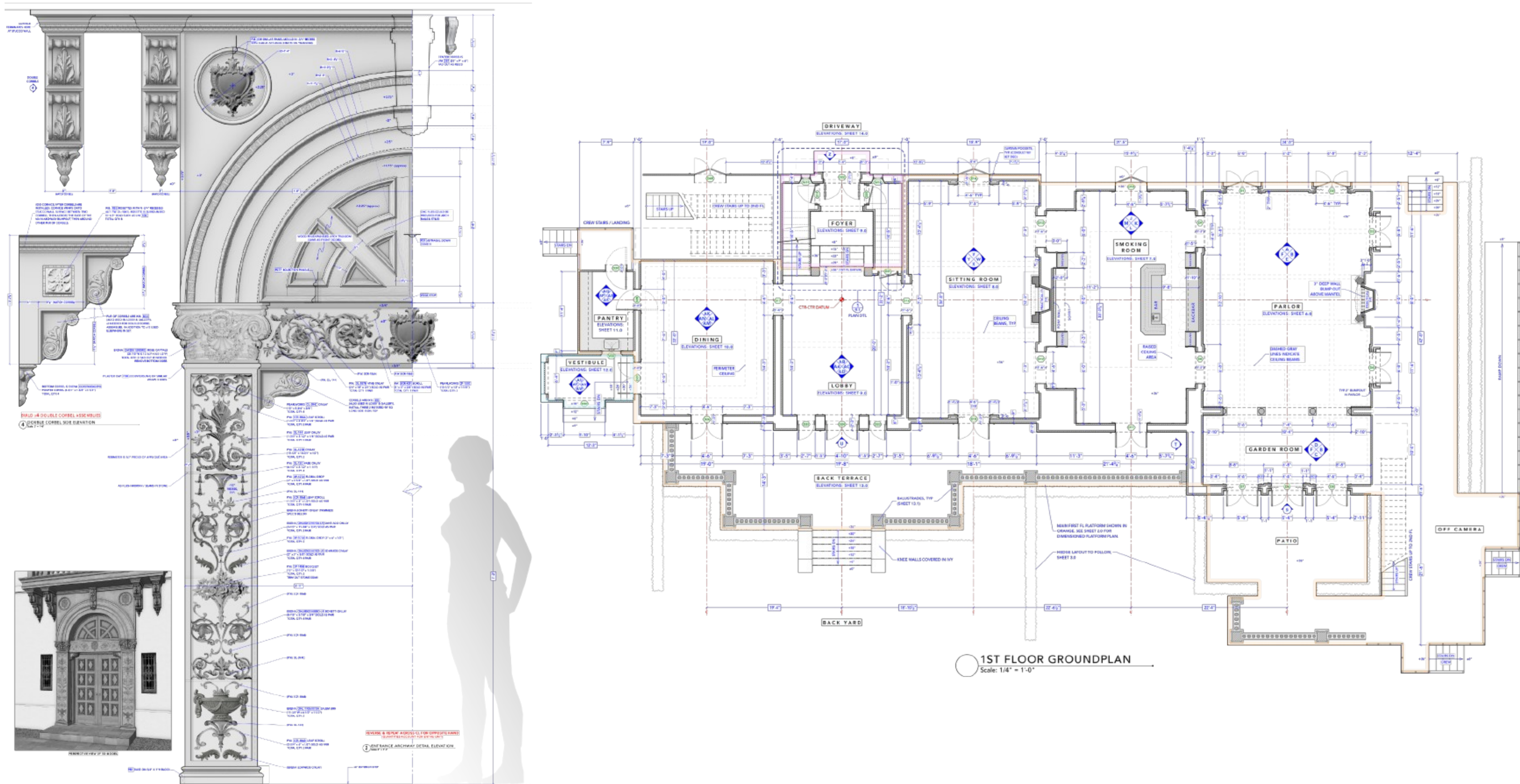
EXT. DELLACORTE MANSION | TRANSFORMING THE GROUNDS OF A LOS ANGELES LOCATION INTO A PALM BEACH ESTATE

In Season 2, the creative team was inspired by the established exterior Dellacorte Mansion location to create...



E/I. DELLACORTE MANSION | BUILT ON STAGE AT WARNER BROS.

... a 12,000 square foot two story exterior and interior set build on stage.



E/I. DELLACORTE MANSION | BUILT ON STAGE AT WARNER BROS.

drafted by set designer Andy Broomell, ADG



INT. DELLACORTE MANSION - FOYER | BUILT ON STAGE AT WARNER BROS.

“Palm Royale isn’t just about more, more, more.

It also rewards viewers’ acute attention and active curiosity. The meticulous language, gorgeous sets, and gasp-worthy costumes are foundational elements of equal if not greater importance to the narrative itself. Unlike second-screen streaming options, these attributes encourage audiences to devote their full attention to one vivid piece of entertainment, as do the clever compositions and physical comedy that build extra jokes into frame after frame.

Palm Royale is filled with similarly thought-provoking designs, be it Alix Friedberg’s carefully concocted couture, Jon Carlos’ all-encompassing production design, or Zachary Galler’s lush, playful cinematography — all in service of a story that’s private, period setting serves as a cozy escapist bubble where we can tsk-tsk our materialistic protagonists as easily as we can enjoy them.”





INT. DELLACORTE MANSION - THE PARLOR | BUILT ON STAGE AT WARNER BROS.



INT. DELLACORTE MANSION - TROPHY ROOM | BUILT ON STAGE AT WARNER BROS.



TWO SMALL MIRRORS, BY SET DEC, TO BE
INSTALLED ON VERTICAL METAL RODS,
-MAYBE 3/16" DIAMETER? ATTACHED TO
TOP SURFACE OF VALANCE, AS FAR
FORWARD AS PRACTICABLE

LARGE MIRROR AS PER SET DEC

RETURN ALL SIDES BACK TO WALL;
9" RETURN. KEEP BOTTOM OPEN
FOR DRAPERY.

PEARLWORKS MLD. 3
1") CORNICE ACROSS
MITER AND RETURN
AT ALL SIDES.

1/8" THICK CNC PLA
ENTIRE FRONT SURF
INSTALLED BEFORE T
APPLIED. TWO DIFFE
COLORS WILL BE USE
LAYER AND BACK
BE PAINTED SEPARA
ASSEMBLY.

B • R • E • A • K

B • R • E • A • K

MITER BACK TO
SURFACE

INT. DELLACORTE MANSION - TROPHY ROOM | BUILT ON STAGE AT WARNER BROS.

drafted by set designer Andy Broomell, ADG





“Visually, *Palm Royale* is
one of the most *jaw-dropping* shows on TV.”

COLLIDER

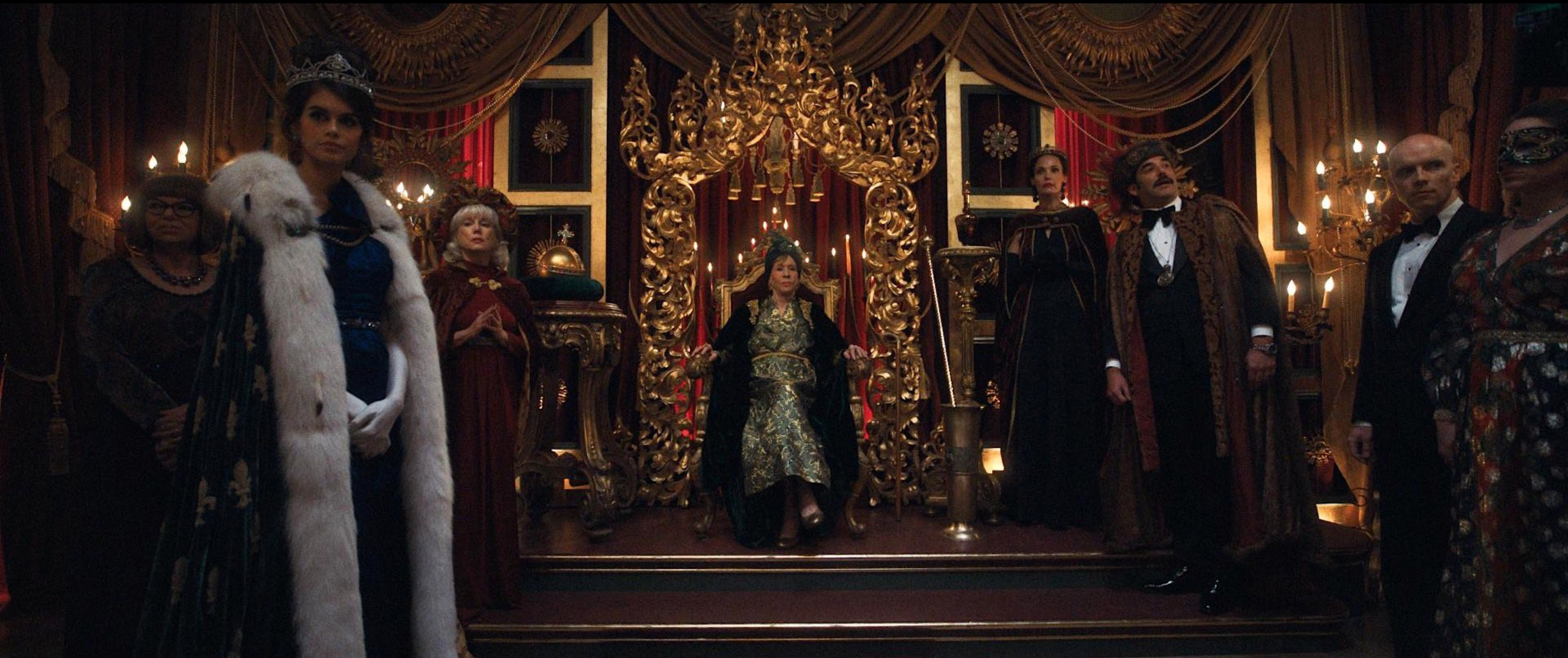








INT. DELLACORTE MANSION - PORTRAIT CEREMONY | BUILT ON STAGE AT WARNER BROS.



“Maximalist, absurd, gorgeous satire...
it’s everything Palm Royale is.” **TOWN&COUNTRY**





INT. DELLACORTE MANSION - UPSTAIRS FOYER | BUILT ON STAGE AT WARNER BROS.





INT. THE PALM ROYALE CLUB - DISGRACED SOCIALITE'S APARTMENT | BUILT ON STAGE AT WARNER BROS.

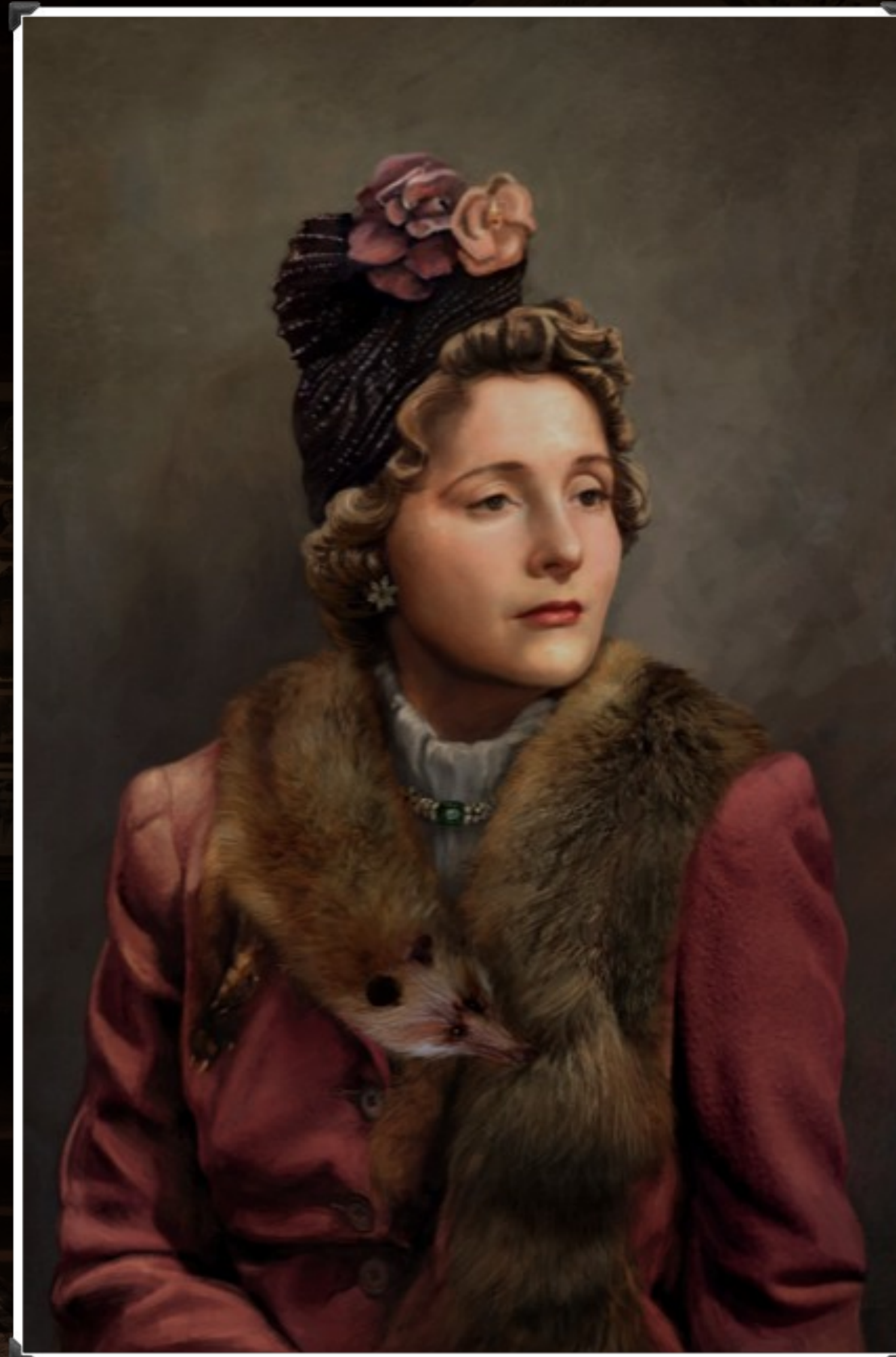


“Palm Royale captures the escapism architecture that Mizner loved,” Jacob said [*VP of the Preservation Foundation of Palm Beach*].



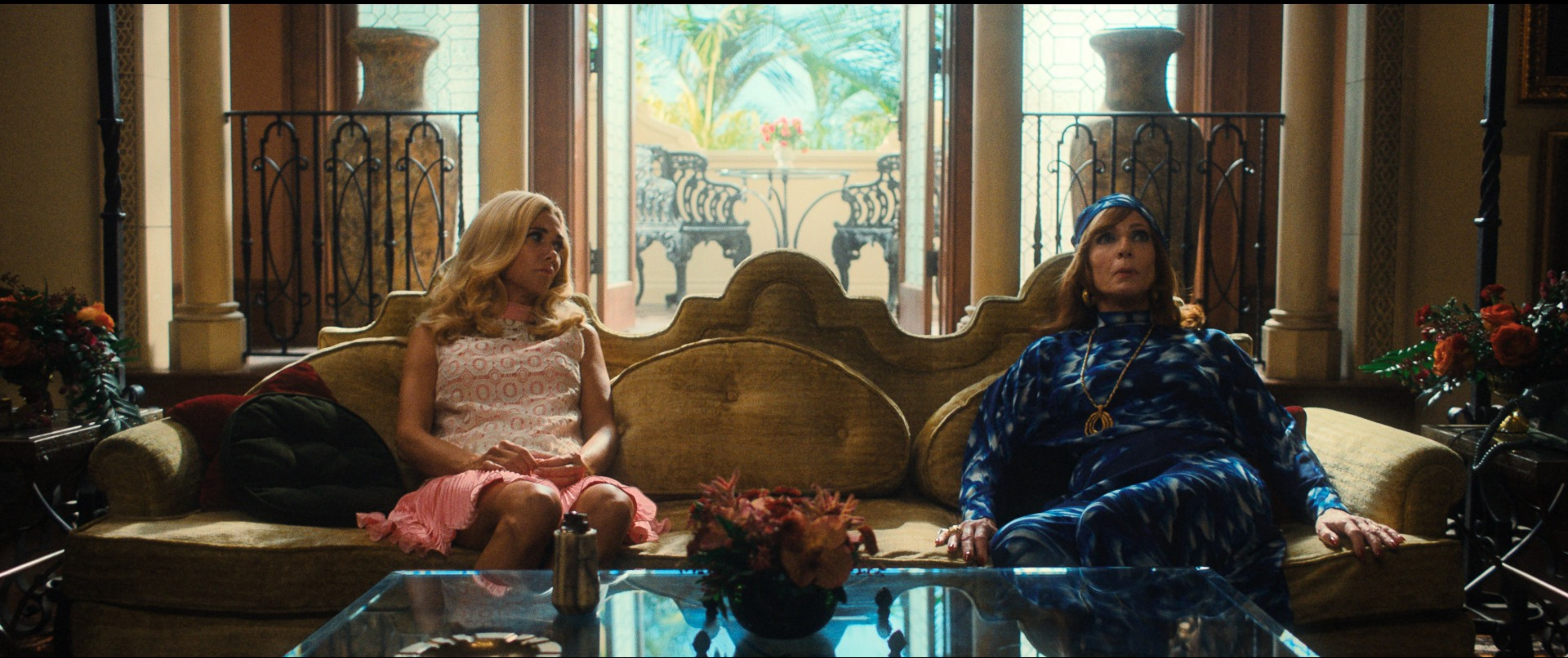
“I do think the show encompasses and really takes on that world of fantasy, of Palm Beach.” **The Palm Beach Post**





INT. THE PALM ROYALE CLUB - DISGRACED SOCIALITE'S APARTMENT | CUSTOM PORTRAITS

painted by illustrator Andrea Dopaso, ADG



“The second season is so, so much better...”



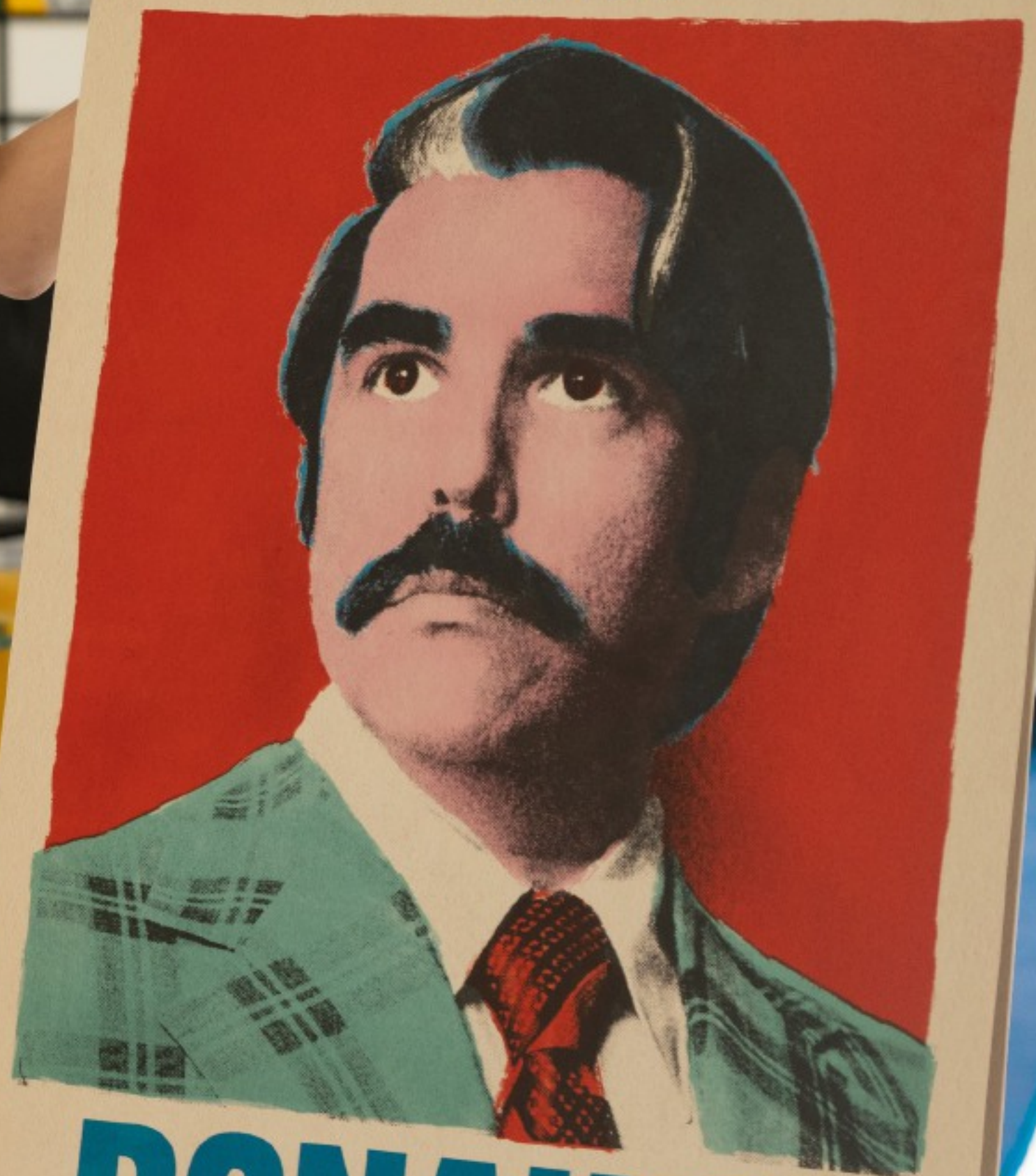
The stunning art direction is back... the sets with their mod architecture and period touches continue the *visual feast*.”



INT. DONAHUE - ROSENHIPS RESIDENCE | BUILT OUT AND DRESS ON LOCATION



ELECT



DONAHUE



“It was made to appear as though a Slim Aarons photography book came to life, the transportive sets and the fabulous costuming presenting sun-soaked postcards of Palm Beach.



...the fashion and decor in *Palm Royale* feel so true-to-life.”

HOUSE &
GARDEN





EXT. SUNNY TIDES SANITARIUM - VERANDA | DRESSED ON LOCATION





INT. SUNNY TIDES SANITARIUM - LOBBY | BUILD-OUT AND DRESS ON LOCATION



SUNNY TIDES

Sanitarium




Luxury Restoration
IN SUNNY PALM BEACH,
FLORIDA



Restful Vacation

spend a vacation, but if
ely you will find Sunny
n of delightful climate,
ngs, wholesome satisfy-
a social atmosphere.
ing a new, refreshed

st and rest-away from
but they're also an
sion and a change of
ing environment that
ves. The great bene-
of rest and building
y be experienced to

Education

Tides Sanitarium.
enu made up of a
at include choice
light and varied
scribed by your

restful, air-con-
dical dietitians,
ysician, are on
is. Even restrict-
and appetizing
y is a pleasant



Soothing Luxury Environment

Upon entering Sunny Tides Sanitarium, you will be
impressed by the refined, quiet dignity and luxuri-
ous home-like atmosphere which is characteristic of
the entire institution. The facilities are both elegant
and refined, and the grounds are lush. The recre-
ational program include health lectures, travel
talks, concerts, games, gymnasium activities such
as shuttle board, dancing, tennis, and badminton.

To those who enjoy the great outdoors, splendid
outdoor expanses branch out in every direction,
with opportunities for both sunshine and the cool
shade. From the right vantage point, one will also
be able to gaze at the crystalline waters of the
Atlantic Ocean.

Stimulating Recreation

Much may be accomplished pleasantly through
the use of effortless restorative body massage,
passive exercise, and the intriguing mechanical
gymnasium at Sunny Tides Sanitarium. You will
marvel at the vibrating machines, mechanical
massagers, and other special devices of mechan-
otherapy. For those who enjoy physical exercise,
there is a daily program under the direction of
expert directors.

Stimulating and relaxing baths are prescribed by
your Sanitarium physician. You'll find here what you
need to lone-up tired muscles. All physical therapy
is under the careful and caring guidance of our
qualified physicians on staff.



Corrective Health Measures

Recognized by the American Medical Association
and the American College of Surgeons, Sunny
Tides Sanitarium specializes in the treatment of
numerous common human afflictions, most notably
nervous exhaustion, digestive disturbances, high
blood pressure, heart and kidney diseases, obesity,
arthritis rheumatism, emaciation, anemia, diabetes,
and the numerous other medical diseases rather
common to the human race.

Excellent facilities are provided for complete
physiotherapy treatment, including both natural
and artificial sunbathing, massage, prescribed
hydrotherapy and physical exercise under the
direction o scientifically trained

Thorough Physical Inventory

Though vacations are restorative in many ways,
choosing to Sunny Tides Sanitarium for a restor-
ative getaway achieves a double purpose, with the
added draw of a thorough and complete physical
check-up by attentive professionals here to serve
your needs. You have the benefit of a complete
examination while relaxing in quiet, soothing,
beautiful and healthful environment.

After a thorough examination is made by one of
our qualified medical technicians, the attending
physician closely follows the progress of the patient
while here and will make bi-weekly reports to their
family, if desired, as well as their home physician
upon any such desired departure.





INT. SUNNY TIDES SANITARIUM - BASEMENT HALLWAY | BUILT ON STAGE AT WARNER BROS.



INT. SUNNY TIDES SANITARIUM - PADDED CELL | BUILT ON STAGE AT WARNER BROS.



INT. CEIL CHAPMAN'S ON WORTH AVENUE - DRESSING ROOM | BUILT ON STAGE AT WARNER BROS.





EXT. THE PALM ROYALE CLUB POOL | INSTALLED ON LOCATION



INT. THE PALM ROYALE CLUB - LADIES POWDER ROOM | BUILT ON STAGE



INT. PALM BEACH DAILY NEWS | BUILT OUT AND DRESSED ON LOCATION



Topps
MOTEL

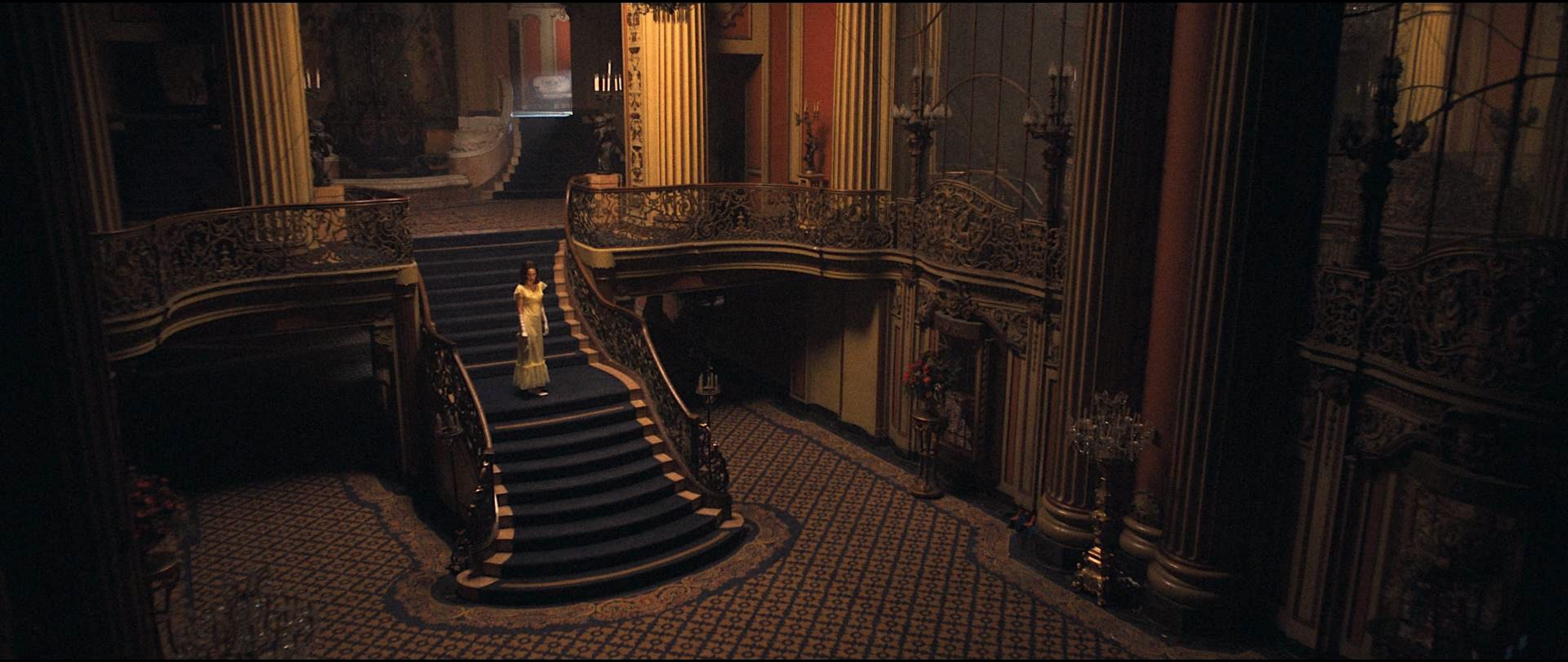
INT. TOPPS MOTEL ROOM | BUILT ON STAGE
graphic design by Evan Regester, drafted by set designer Andy Hull, ADG





INT. RAQUEL KIMBERLY-MARCO'S ESTATE - LIVING ROOM | DRESSED ON LOCATION





INT. MAR-A-LAGO BALLROOM | BUILT OUT AND DRESS ON LOCATION











SWITZERLAND | BUILT OUT AND SHOT ON LOCATION IN OREGON















THANK YOU FOR YOUR CONSIDERATION

