

max ORIGINAL

THE

PITTT



2025
EMMY® WINNER
OUTSTANDING DRAMA SERIES



PLEASE pause and consider...

The sheer scale of the over **22,000 sq ft** meticulously detailed Emergency Department set for **THE PITT** is best understood by visiting in person. Cupping curves, lit entirely by **689 practicals** embedded within the design, enable endless freedom of movement—offering both camera and actor a **fully-immersive** world—allowing **360 degrees** of depth and cinematic possibility.

We are grateful many people believe this is a real space.

- Nina Ruscio
PRODUCTION DESIGNER



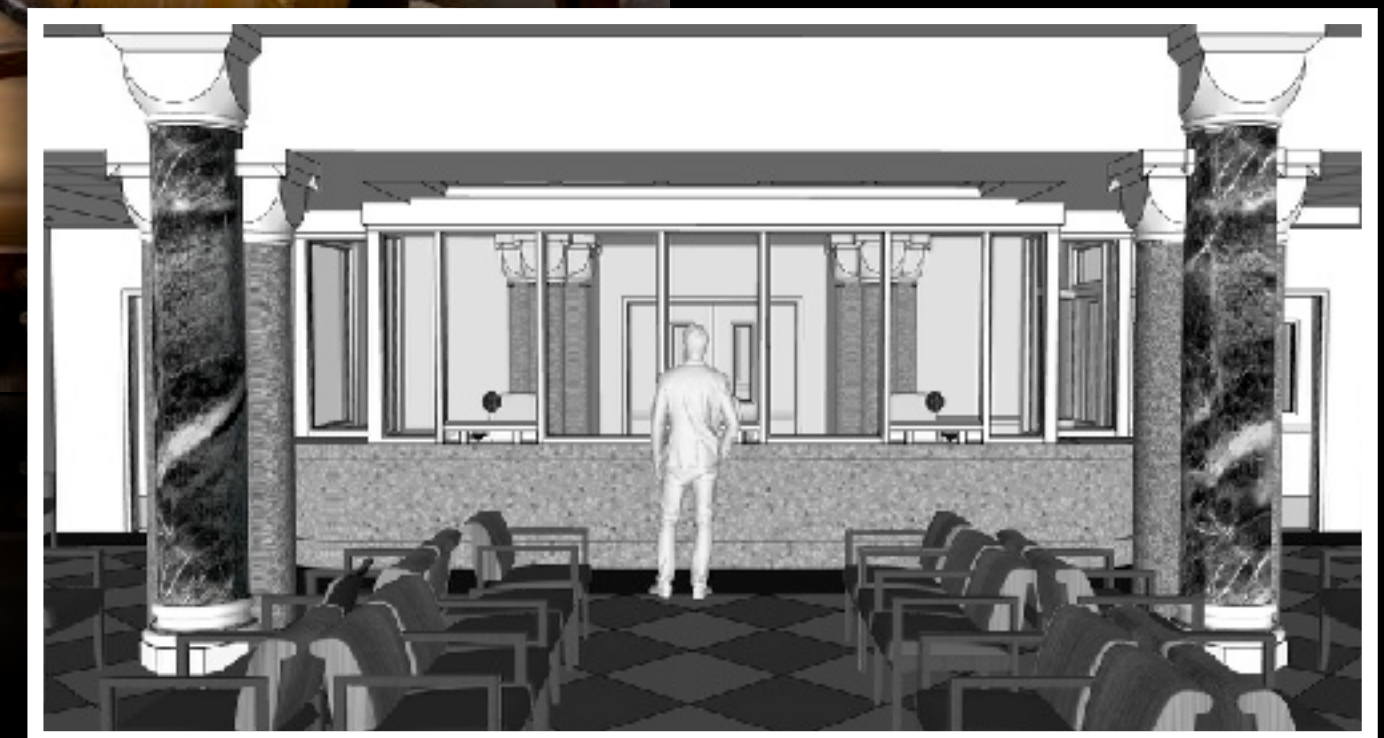
Pittsburgh
TRAUMA MEDICAL CENTER



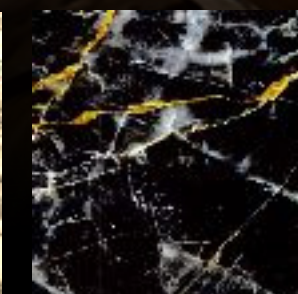
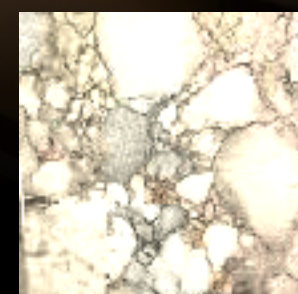
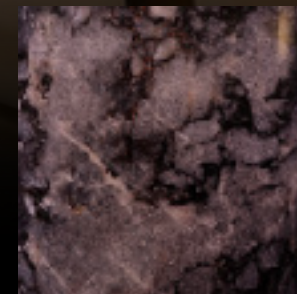
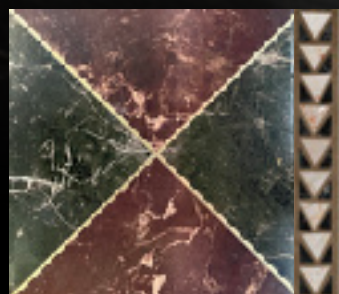
Pittsburgh Trauma Medical Center (PTMC) • *Emergency Department* • Stage 22



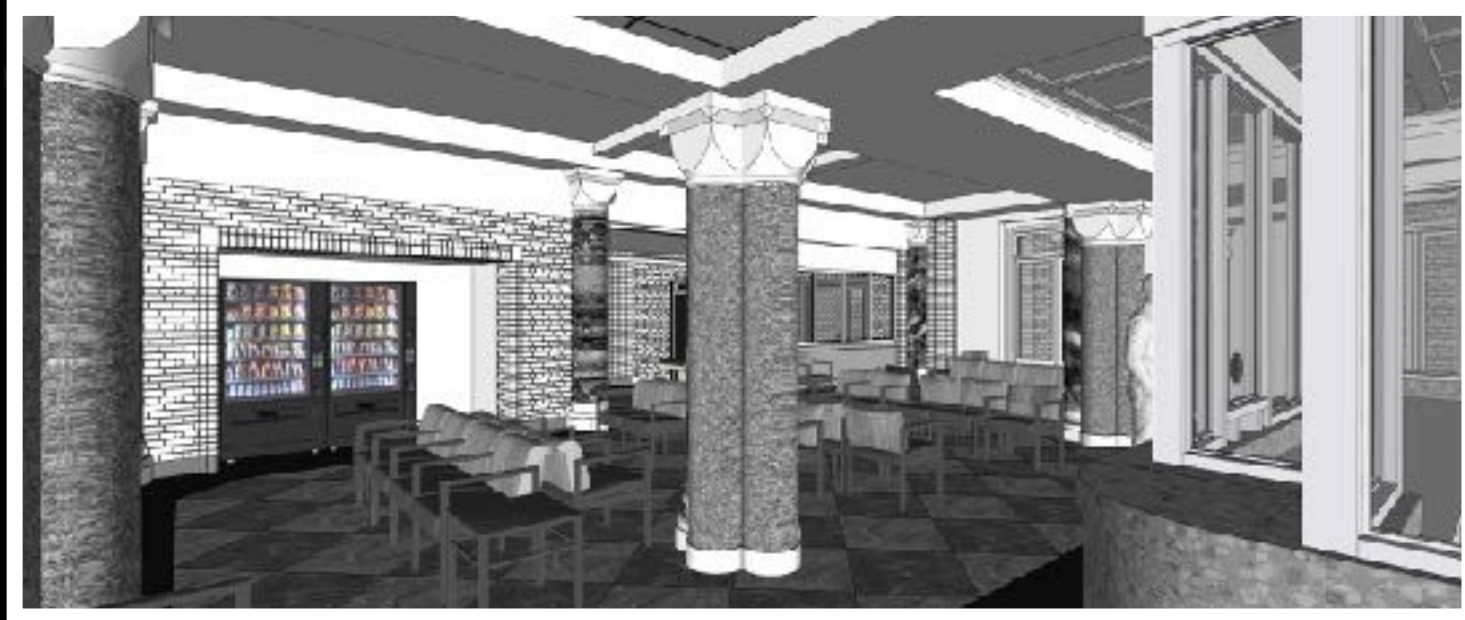
Pittsburgh Trauma Medical Center (PTMC) • *Pedestrian Entrance, Waiting Room & Triage* • Stage 21



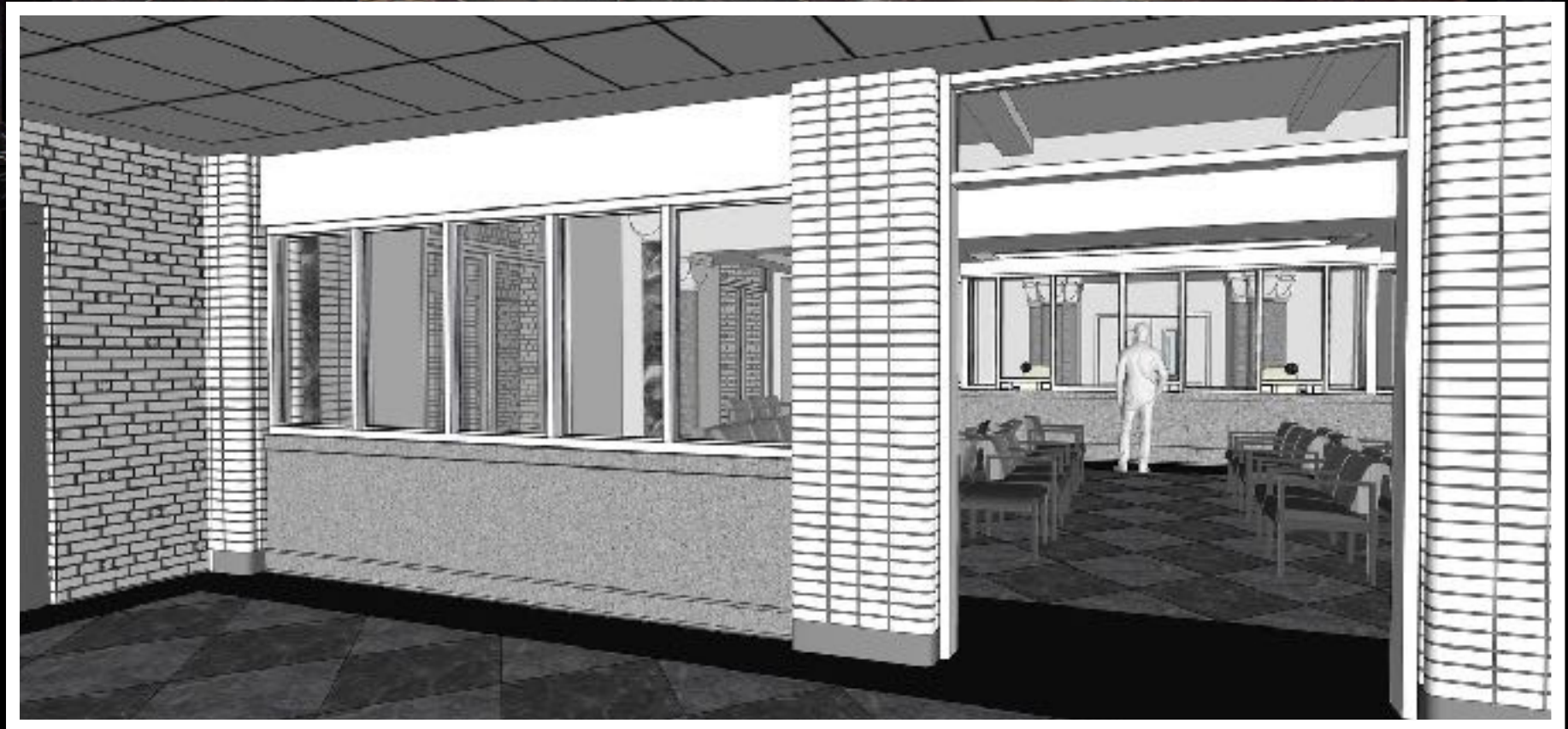
PTMC Emergency Department • *Reception* • Stage 21



PTMC Emergency Department • *Waiting Room* • Stage 21



PTMC Emergency Department • *Waiting Room & Reception* • Stage 21



PTMC Emergency Department • *Pedestrian Entrance* • Stage 21



PTMC Emergency Department • *Reception & Waiting Room* • Stage 21



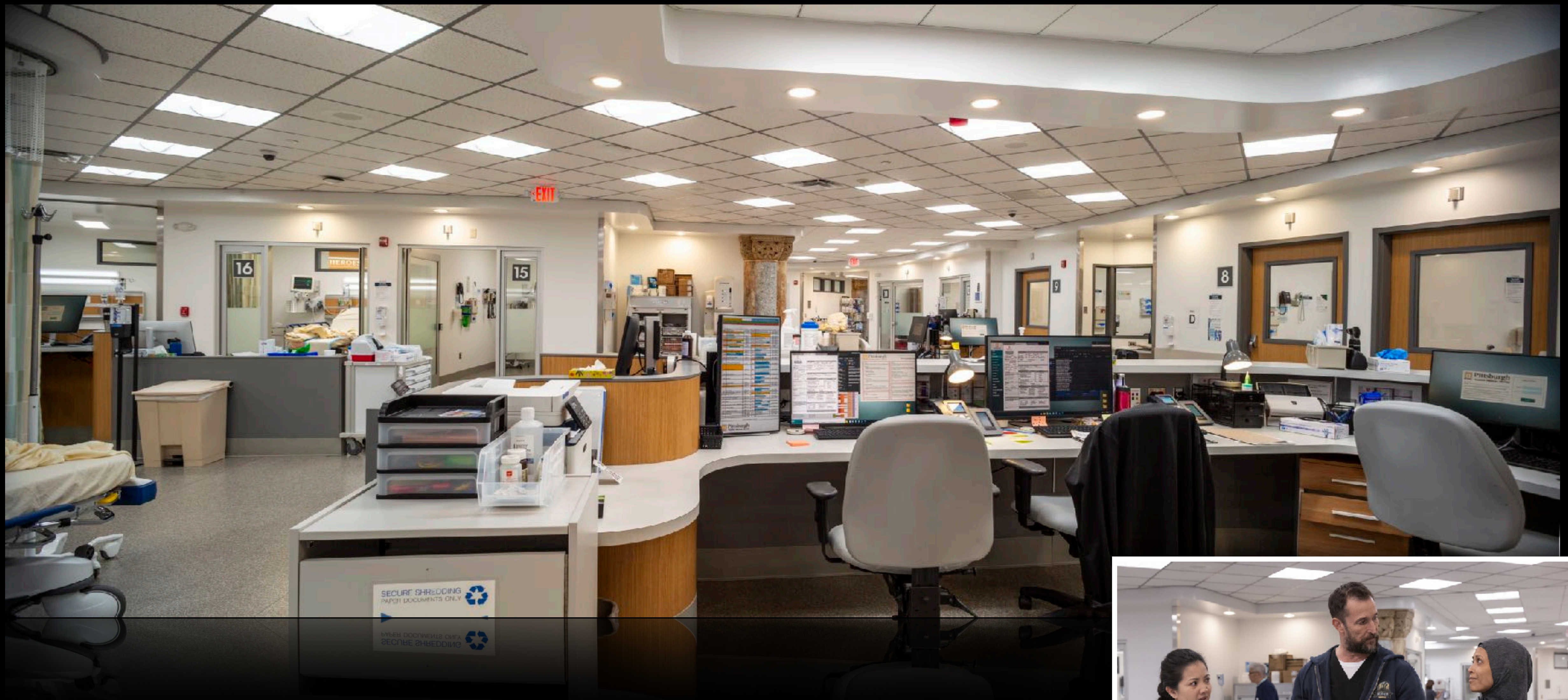
PTMC Emergency Department • Triage • Stage 21



PTMC Emergency Department • *Central Corridor* • Stage 22



PTMC Emergency Department • *Central Hub* • Stage 22



PTMC Emergency Department • *Central Hub* • Stage 22

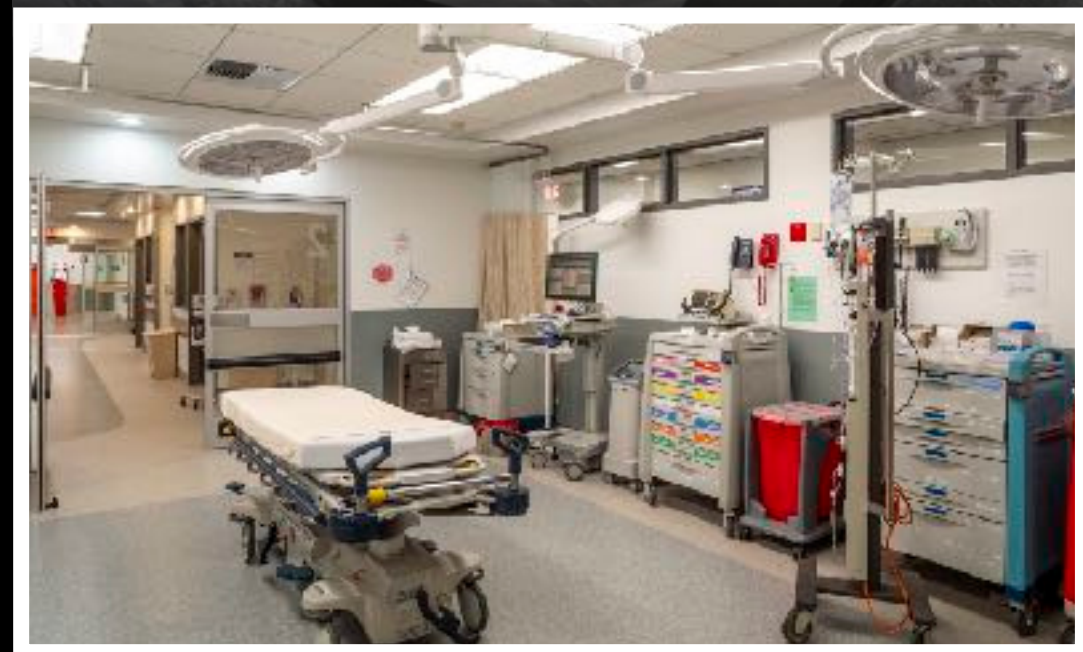


PTMC Emergency Department • *South Corridor & Central Hub* • Stage 22



PTMC Emergency Department • *South Corridor* • Stage 22

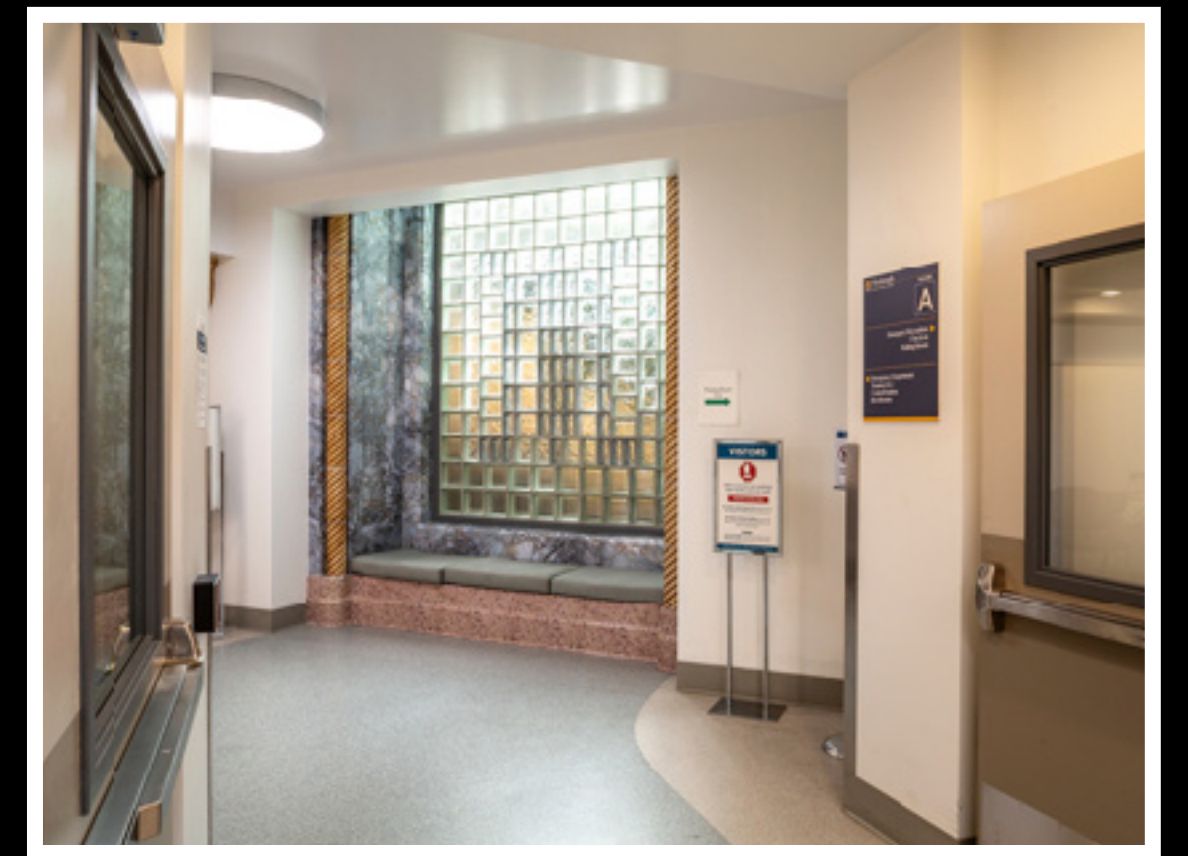




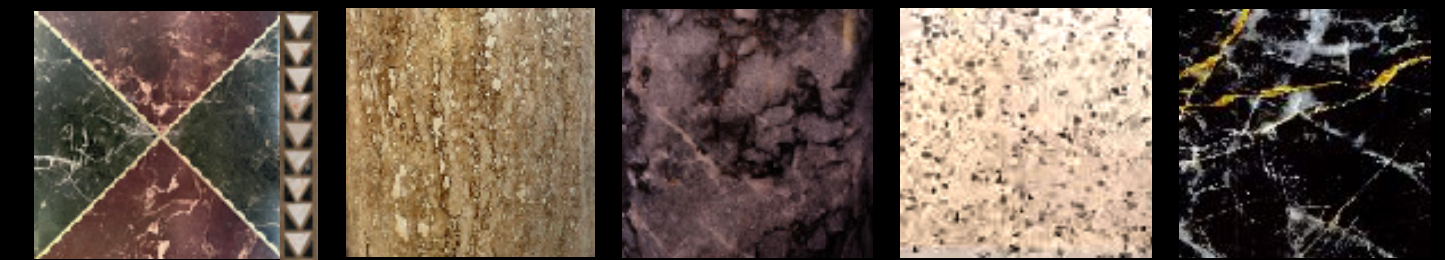
PTMC Emergency Department • *Trauma 1 & 2* • Stage 22



PTMC Emergency Department • Trauma Rooms & Corridor • Stage 22



PTMC Emergency Department • *Passages* • Stage 22



PTMC Emergency Department • *North Stairwell* • Stage 22



PTMC Emergency Department • *North Corridor* • Stage 22



PTMC Emergency Department • *North Corridor* • Stage 22

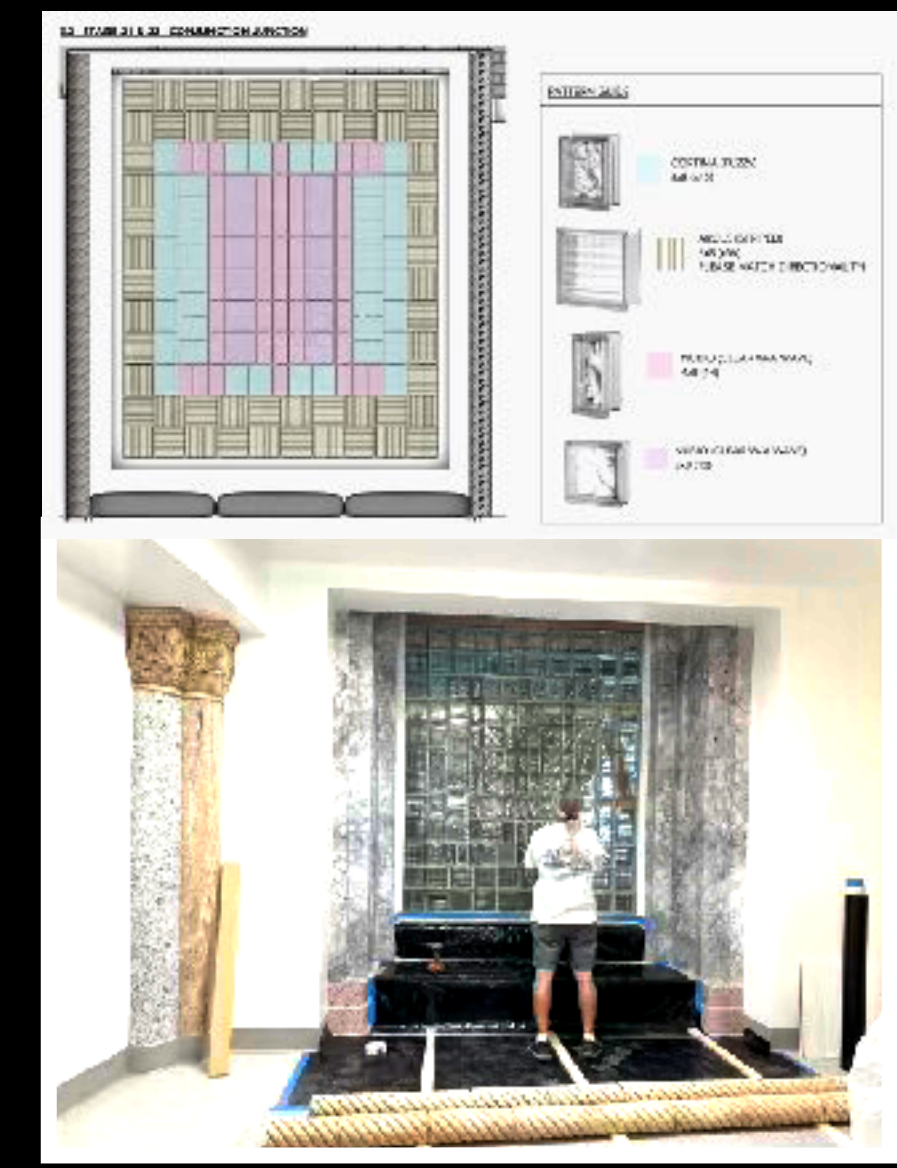


PTMC Emergency Department • *North Corridor* • Stage 22

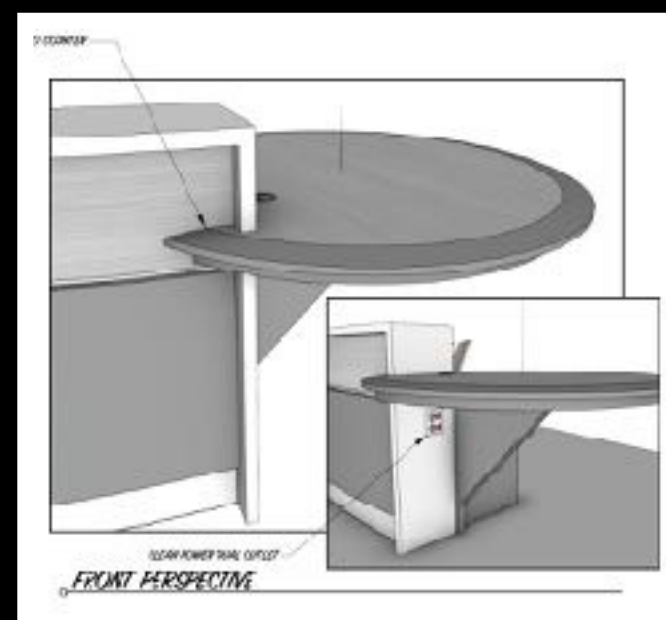
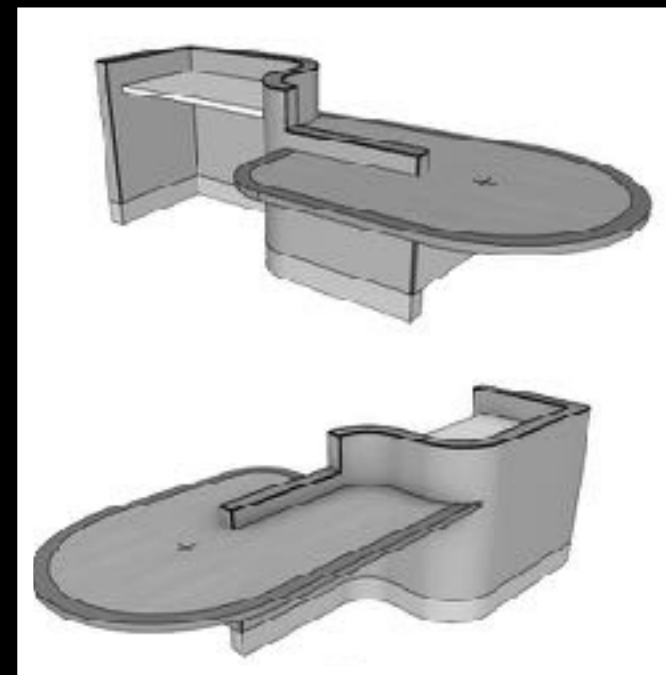
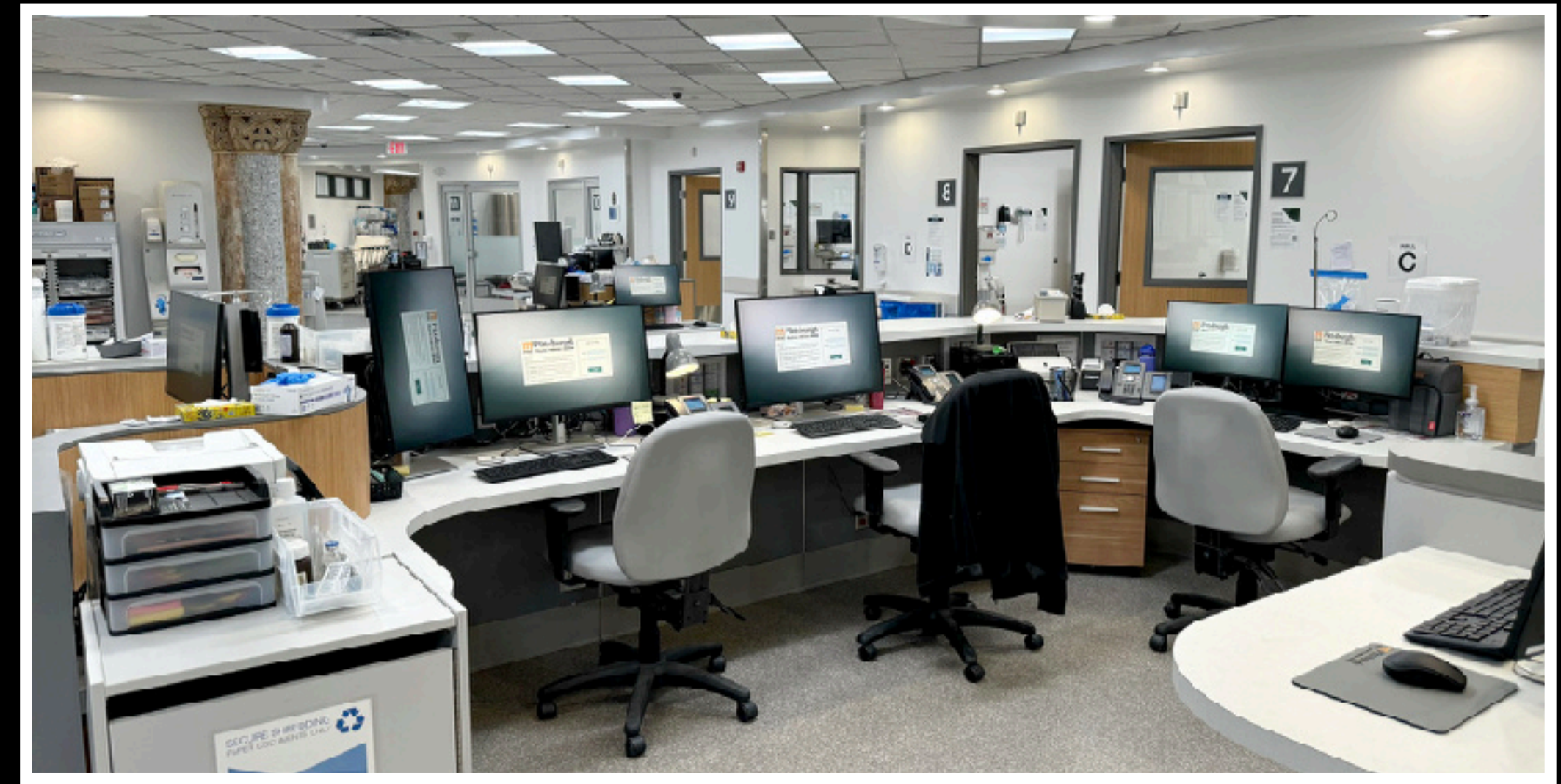
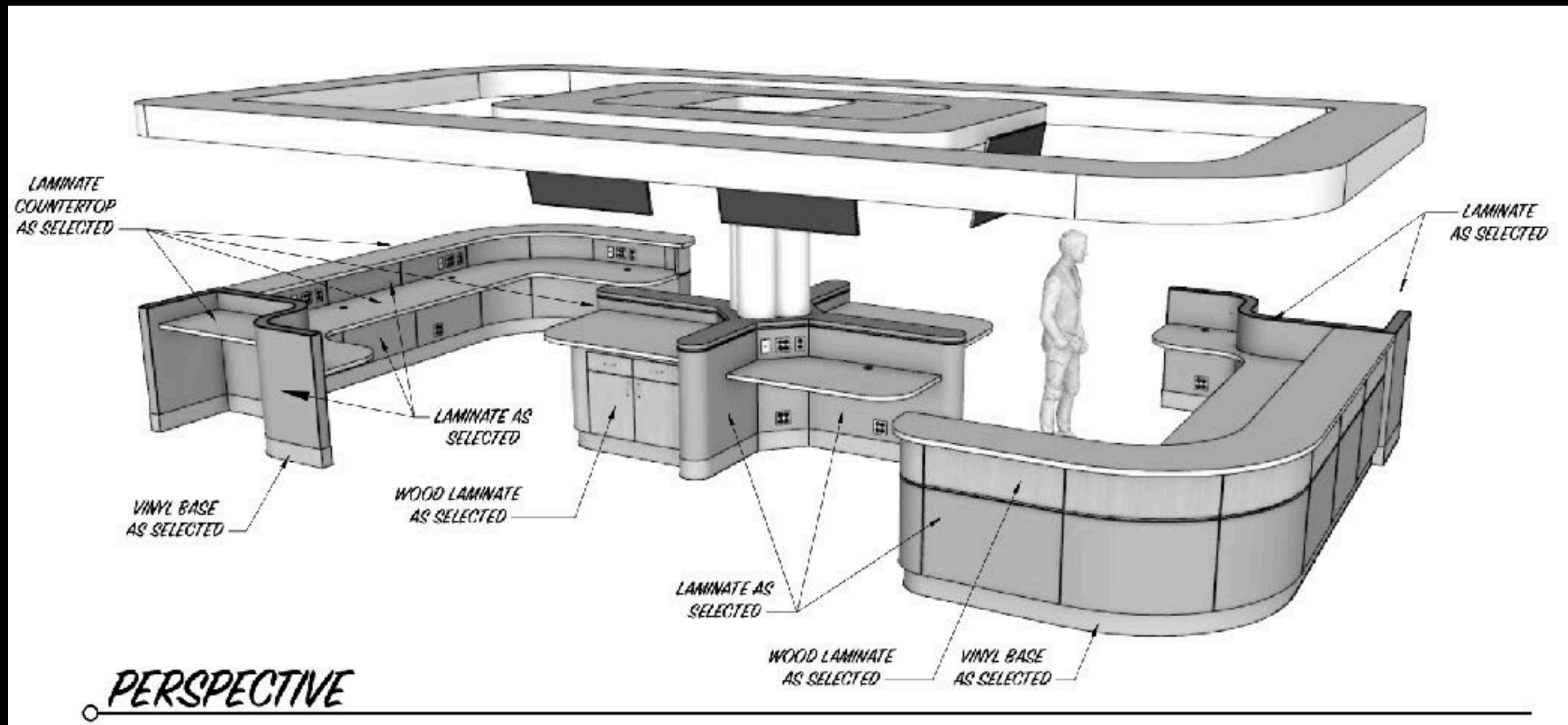


PTMC Emergency Department • *Pedes* • Stage 22





PTMC Emergency Department • *Wall of Heroes* • Stage 22



Custom Workstations



PTMC Emergency Department • Covid Flashback



SPOTLIGHT ON DESIGN

The New York Times

READ THE ARTICLE ►

Indiewire®

READ THE ARTICLE ►

MPA

READ THE ARTICLE ►

PERSPECTIVE
THE JOURNAL OF THE ART DIRECTORS GUILD

READ THE ARTICLE ►

THE CREDITS

WATCH THE REEL ►

THE HOLLYWOOD REPORTER

READ THE ARTICLE ►

VANITY FAIR

READ THE ARTICLE ►

PBS NEWS HOUR

WATCH THE REEL ►

THANK YOU FOR YOUR CONSIDERATION

PRODUCTION DESIGNER

Nina Ruscio

ART DIRECTORS

Josh Lusby

Jacqueline Glynn

SET DESIGNERS

Dean Wolcott

Caroline Quinn

Randall Wilkins

GRAPHIC DESIGNERS

Christopher Isenegger

Jason Z. Cohen

ART DIRECTOR (PITTSBURGH)

Greg Weimerskirch

SET DECORATOR

Matt Callahan

IMAGE CREDITS

Josh Lusby & Dean Wolcott, MODELS

Daniel Lindley, MATTERPORT

Ken Haber & Warrick Page/HBO, SET PHOTOS

ART DEPT. COORDINATOR

Thomas Zamora

CONST. COORDINATOR

Dwayne Franks

CONST. FOREMAN

Ed Nua

LEAD SCENIC

Jason Paolone

LEAD PLASTERER

Todd Bennet

LABOR FOREMAN

Jonathan Manheart

GREENS FOREMAN

Roberto Baez

PROPS

Rick Ladomade

Cody Birdwell

LEADMAN

Chris Littleford

SET DEC. BUYERS

Stephanie Wagner

Shannon Curfman

SET DEC. COORDINATOR

Ryan Huddleston

ART DEPARTMENT P.A.s

Caitlin Nunes

Juliana Johnson

**THE
PIT**